



MARKETPLACE AT
F O
U R
C O R N E R S





- Now Open - Christopher & Banks and Bank of America
- Tremendous leasing velocity with Stein Mart, Gabe's, Old Navy, Kirklands, Party City, Torrid, Christopher & Banks and Bank of America all new tenants from 2016 - 2019.
- 4 Opportunities Available:
 - 3,288 SF retail shell space adjacent to Famous Footwear & Bath & Body Works
 - 2,800 SF on outparcel, existing Payless
 - 1,200 SF outparcel opportunity
 - 1.76 AC Outparcel Available: casual dining, junior anchor, etc.

MARKETPLACE AT
F O
U R
 C O R N E R S



JOIN THESE RETAILERS



FOR INFORMATION CONTACT, EXCLUSIVE LEASING TEAM:

JOSEPH W. KHOURI
 First Vice President
 216 658 6120
 joseph.khour@cbre.com

KEVIN MOSS
 Senior Associate
 216 363 6453
 kevin.moss@cbre.com



AVAILABLE SPACE

- 3,288 SF retail shell space adjacent to Famous Footwear & Bath & Body Works
- 2,800 SF outparcel endcap existing Payless Shoe Store
- 1,200 outparcel opportunity
- 1.76 AC Outparcel Available – casual dining, junior anchor, etc



AREA INFO

- Located in the premier super regional destination in the affluent southeastern suburb of Aurora, OH
- Strong average HH incomes of \$112,571 in a 15 minute drive time radius
- High grossing big box retail sales!

MARKETPLACE AT

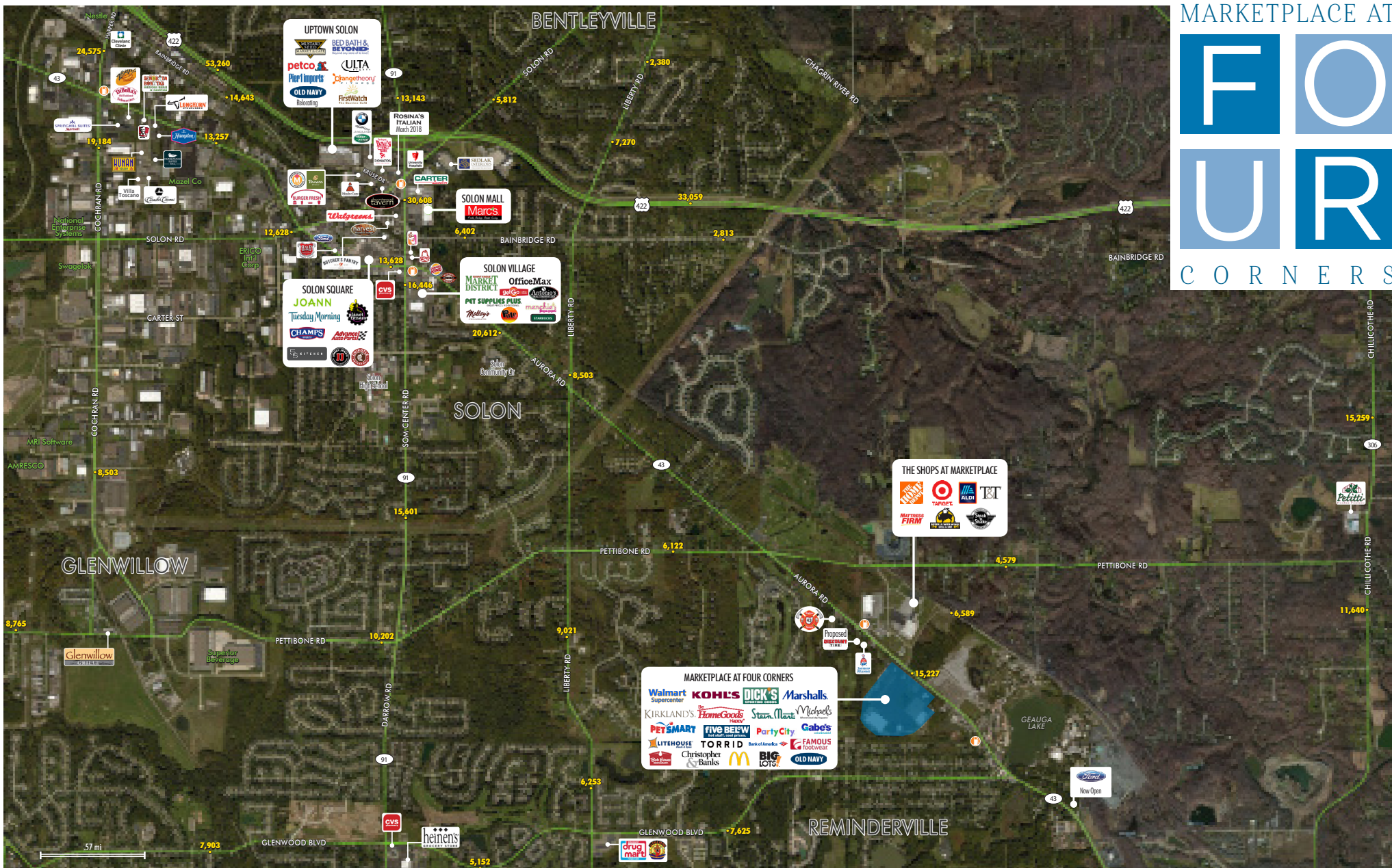


C O R N E R S

JOIN THESE RETAILERS

- Walmart
- Dick's Sporting Goods
- Marshalls
- Gabe's
- PetSmart
- Part City
- Five Below
- Lighthouse Pools and Spas
- Bath & Body Works
- Weight Watchers
- TNT Tanning
- Subway
- Asian Sun
- Best Cuts
- GNC
- Bank of America
- Kohl's
- Stein Mart
- HomeGoods
- Old Navy
- Michaels
- Kirkland's
- Big Lots
- Famous Footwear
- Torrid
- Sally Beauty Supply
- DentalWorks
- Crystal Nails
- AT&T
- GameStop
- Kay Jewelers
- Christopher & Banks

MARKETPLACE AT FOUR CORNERS



TRADE AREA INFO

SOM Center Road (SR-91) and Aurora Road (SR-43)

- Population (3 mi): 28,885
- Daytime Population (3 mi): 38,222
- Hotels: 3; 309 rooms
- Office (3 mi): Approx. 746,600 SF
- Total Businesses (3mi): 1,403
- Total Employees (3 mi): 29,143
- Major Employers: Nestle, Swagelok, Superior Beverage, ERICO International, National Enterprise Systems, AMRESKO

DEMOGRAPHICS



POPULATION

	3 MILES	5 MILE	7 MILE	10 MILES
2017 Population	27,398	68,770	123,525	239,222
2022 Projected Population	28,068	69,787	124,901	240,363
2010 Census	26,241	66,757	120,794	236,915



DAYTIME POPULATION

	3 MILES	5 MILE	7 MILE	10 MILES
2017 Daytime Population	19,626	70,783	133,050	261,732
Daytime Workers	28,068	69,787	124,901	141,848
2010 Census	26,241	66,757	120,794	236,915



HOUSEHOLD INCOME

	3 MILES	5 MILE	7 MILE	10 MILES
2017 Households	10,262	26,345	47,225	91,134
2017 Average Household Income	\$125,665	\$118,840	\$117,996	\$103,323
2022 Average Household Income	\$139,623	\$131,575	\$130,566	\$114,811
2017 Median Household Income	\$92,814	\$88,020	\$87,269	\$74,581
2022 Median Household Income	\$99,800	\$94,404	\$94,144	\$81,584



EDUCATION

	3 MILES	5 MILE	7 MILE	10 MILES
2017 Population 25 and Over	19,021	49,254	86,980	169,759

FOR INFORMATION CONTACT, EXCLUSIVE LEASING TEAM:

JOSEPH W. KHOURI

First Vice President

216 658 6120

joseph.khoury@cbre.com

KEVIN MOSS

Senior Associate

216 363 6453

kevin.moss@cbre.com



MARKETPLACE AT

FOUR

CORNERS

FOR INFORMATION CONTACT, EXCLUSIVE LEASING TEAM:

JOSEPH W. KHOURI

First Vice President

216 658 6120

joseph.khour@cbre.com

KEVIN MOSS

Senior Associate

216 363 6453

kevin.moss@cbre.com

© 2019 CBRE, Inc. This information has been obtained from sources believed reliable. We have not verified it and make no guarantee, warranty or representation about it. Any projections, opinions, assumptions or estimates used are for example only and do not represent the current or future performance of the property. You and your advisors should conduct a careful, independent investigation of the property to determine to your satisfaction the suitability of the property for your needs. Photos herein are the property of their respective owners and use of these images without the express written consent of the owner is prohibited. CBRE and the CBRE logo are service marks of CBRE, Inc. and/or its affiliated or related companies in the United States and other countries. All other marks displayed on this document are the property of their respective owners. Licensed Real Estate Brokers.

CBRE