

FOR LEASE > OFFICE SPACE

Coopers Hollow Building 1



220 N. 1200 E., SUITE 201 | LEHI, UTAH 84043



Property Information

- > Suite 201: 2,512 SF Available
- > Exceptional I-15 Access
- > Parking Ratio: 4/1,000 Premium location
- > Major neighboring tenants: Costco, Lowe's, Walmart, Best Buy, Home Depot, Chili's, IHOP and Denny's.
- > **Lease Rate: \$17.00 SF / NNN**

DEMOGRAPHICS	1 MILE	3 MILE	5 MILE
Population			
2019 Estimated	8,816	78,083	158,282
2024 Projected	9,643	86,580	178,353
Households			
2019 Estimated	2,380	20,447	41,892
2024 Projected	2,608	22,692	47,352
Income			
2019 Median HHI	\$87,715	\$84,458	\$87,341
2019 Average HHI	\$100,936	\$99,217	\$106,046
2019 Per Capita	\$26,952	\$26,081	\$27,939

Information provided by ESRI Business Analyst

Jason Dodge
+1 801 836 5100
jason.dodge@colliers.com

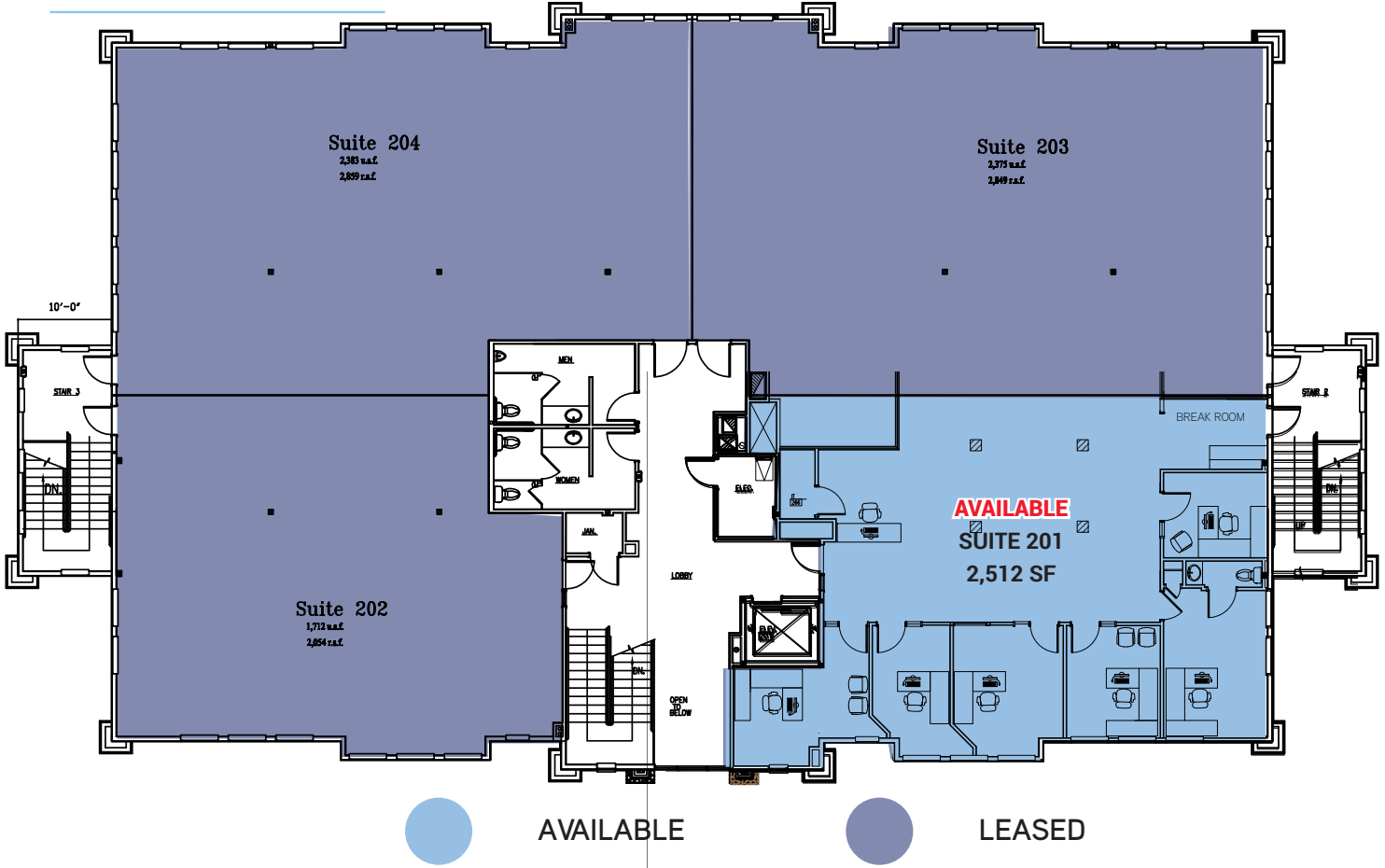
Colliers International
2100 Pleasant Grove Blvd. | Suite 200
Pleasant Grove, UT 84062
P: +1 801 610 1300

FOR LEASE > OFFICE SPACE

Coopers Hollow Building 1

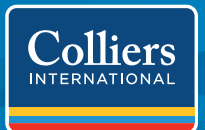
220 N. 1200 E., SUITE 201 | LEHI, UTAH 84043

Second Floor Plan



Jason Dodge
+1 801 836 5100
jason.dodge@colliers.com

Colliers International
2100 Pleasant Grove Blvd. | Suite 200
Pleasant Grove, UT 84062
P: +1 801 610 1300



Accelerating success.

FOR LEASE > OFFICE SPACE

Coopers Hollow Building 1

220 N. 1200 E., SUITE 201 | LEHI, UTAH 84043



This document has been prepared by Colliers International for advertising and general information only. Colliers International makes no guarantees, representations or warranties of any kind, expressed or implied, regarding the information including, but not limited to, warranties of content, accuracy and reliability. Any interested party should undertake their own inquiries as to the accuracy of the information. Colliers International excludes unequivocally all inferred or implied terms, conditions and warranties arising out of this document and excludes all liability for loss and damages arising there from. This publication is the copyrighted property of Colliers International and/or its licensor(s). ©2020. All rights reserved.

Colliers International
2100 Pleasant Grove Blvd. | Suite 200
Pleasant Grove, UT 84062
P: +1 801 610 1300



Accelerating success.