

# S<sup>1056</sup>. 88TH ST, LOUISVILLE

## CONTACT:

[MICHAEL-RYAN McCARTY](#) OR  
[ANGELA TOPEL](#)  
(303) 442-1040  
[WWW.GIBBONSWHITE.COM](http://WWW.GIBBONSWHITE.COM)

## SPACE:

OFFICE

STORAGE

## SIZE:

2,240 - 5,052 RSF

572 SF

## LEASE RATE:

\$19.50 NNN (\$7.88\*)

\*PLUS UTILITIES

\$650/MONTH

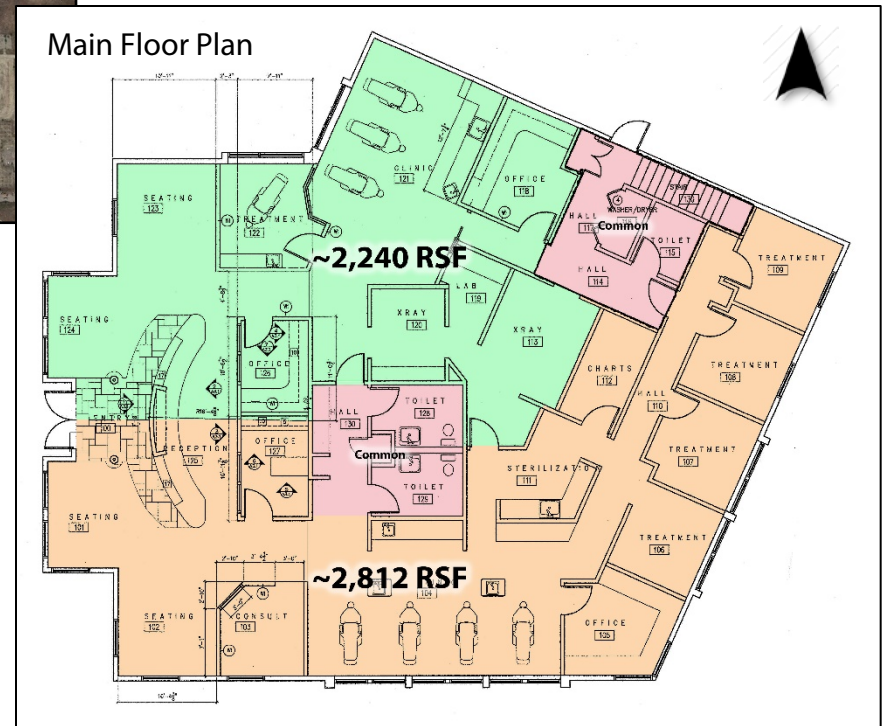
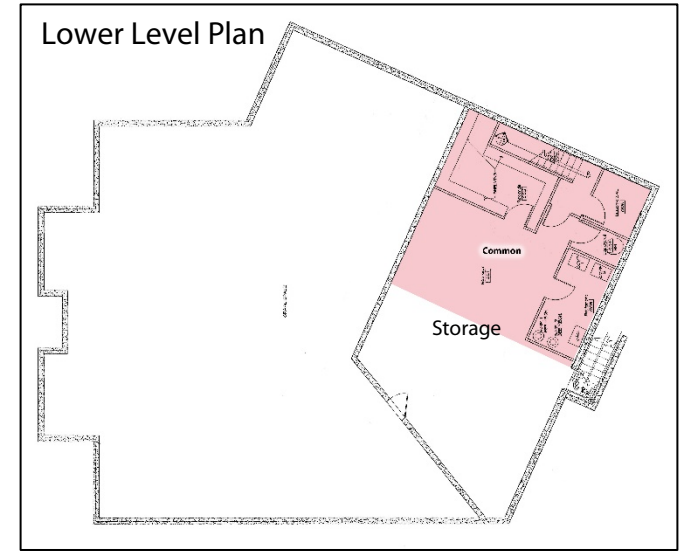
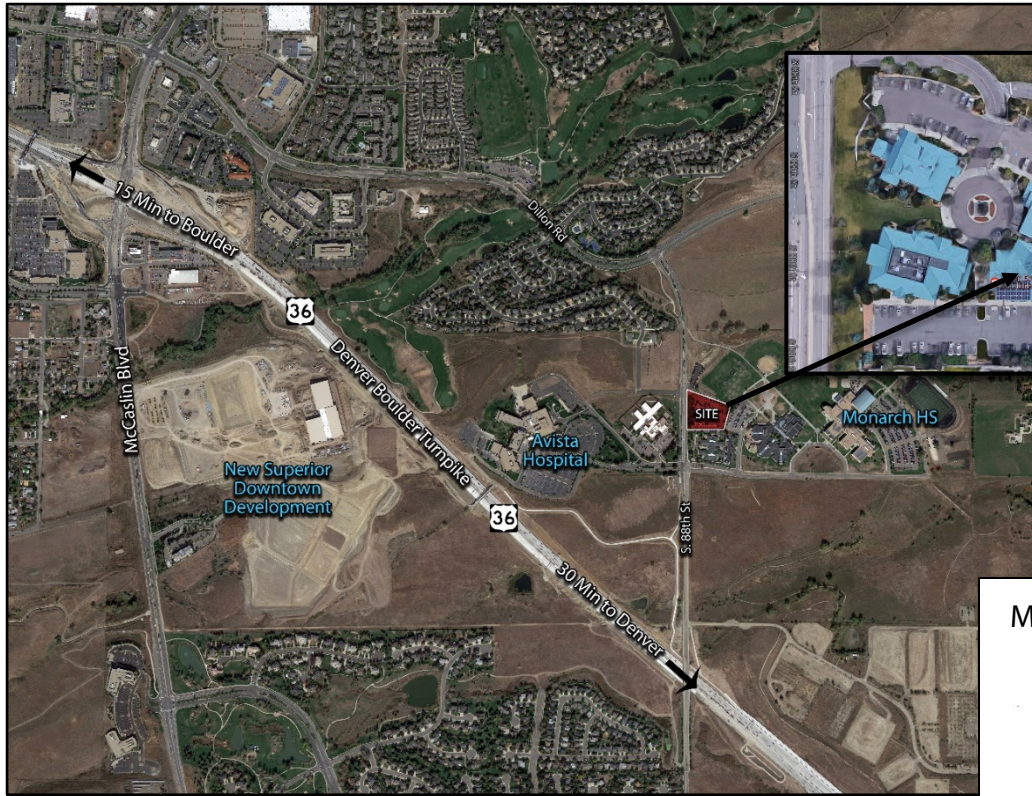
## DENTAL OR MEDICAL OFFICE



- MODERN TURN-KEY DENTAL OFFICE ACROSS FROM AVISTA HOSPITAL – SIGNIFICANT BUILD-OUT EXPENSE SAVINGS
- STORAGE SPACE AVAILABLE WITH PRIVATE ACCESSIBILITY
- LOCKER ROOMS & BREAK ROOM
- EASY ACCESS FROM 88TH BETWEEN DILLON ROAD & ROCK CREEK PARKWAY
- ABUNDANT AND CONVENIENT FREE PARKING

The information above has been obtained from sources believed reliable. While we do not doubt its accuracy, we have not verified it and make no guarantee, warranty, or representation about it.

**GIBBONS**  **WHITE**  
Incorporated



**GIBBONS WHITE**  
Incorporated

[MICHAEL-RYAN MCCARTY](#) OR [ANGELA TOPEL](#) | (303) 442-1040 | [WWW.GIBBONSWHITE.COM](http://WWW.GIBBONSWHITE.COM)