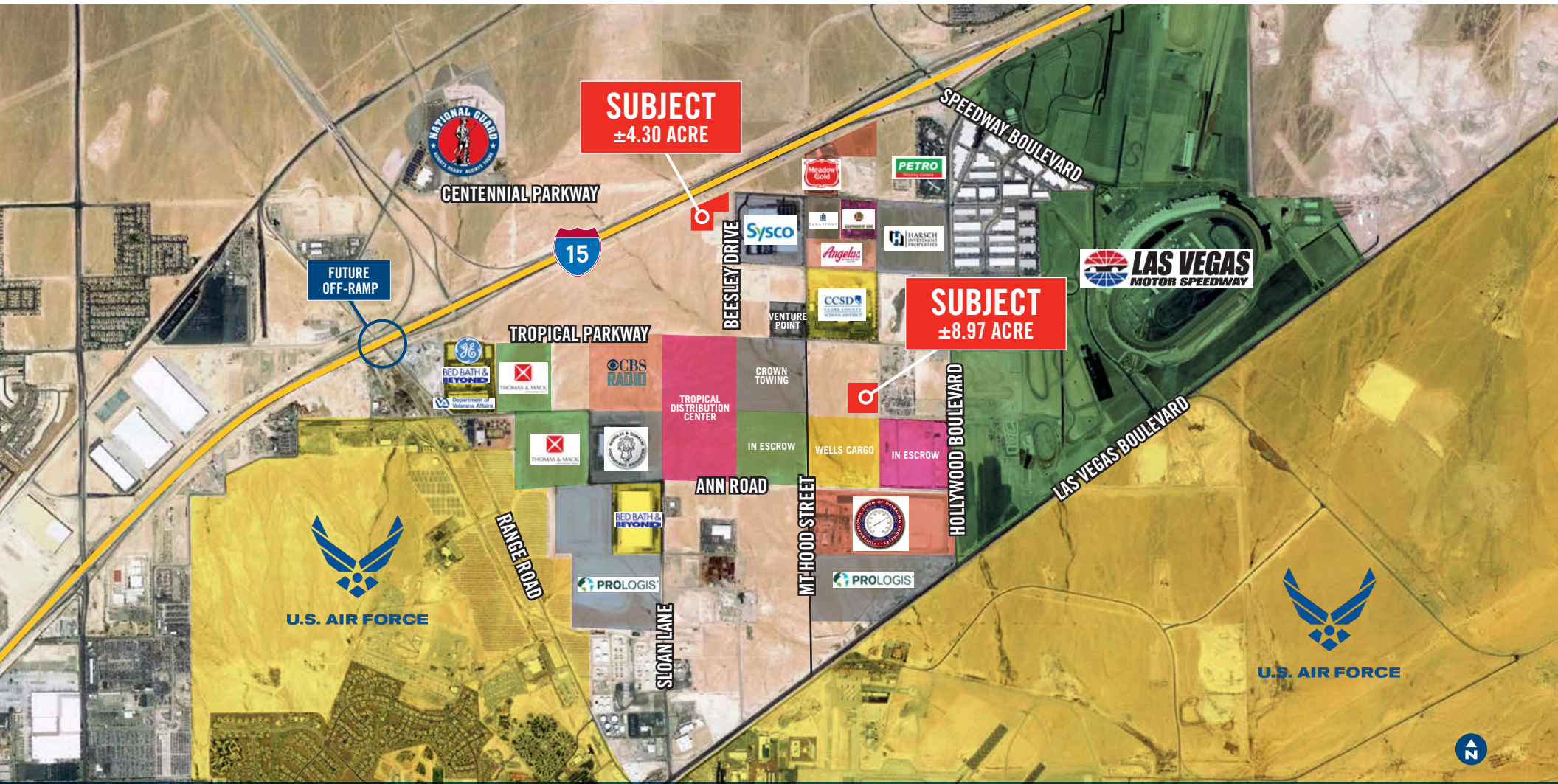


LAND FOR SALE

SPEEDWAY PARCELS

LAS VEGAS, NEVADA 89115



BRIAN RIFFEL SIOR
+1 702 836 3773
brian.riffel@colliers.com

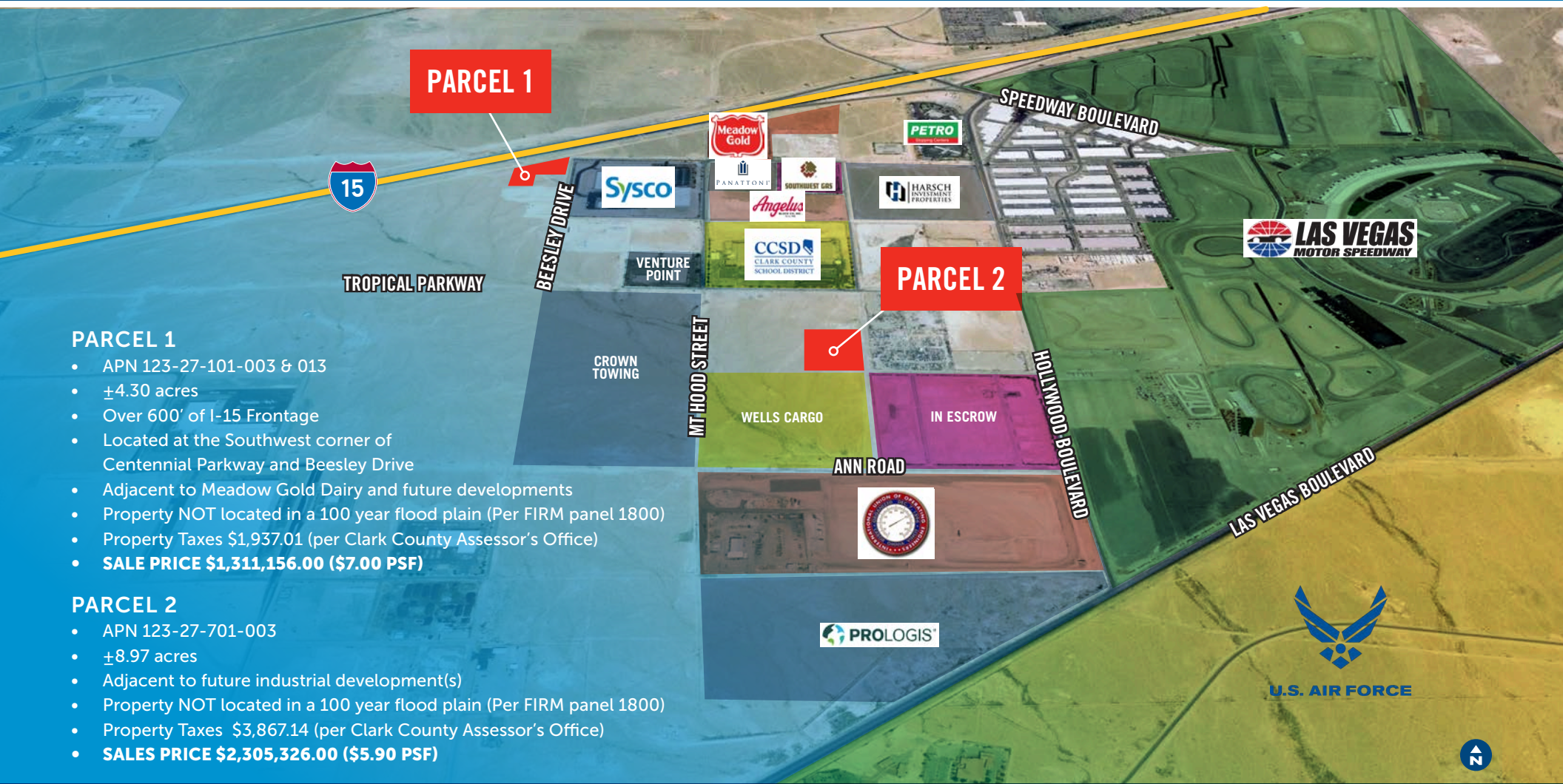
TYLER JONES
+1 702 836 3754
tyler.jones@colliers.com

3960 Howard Hughes Parkway, Suite 150
Las Vegas, NV 89169
T +1 702 735 5700
www.colliers.com/lasvegas

LAND FOR SALE

SPEEDWAY PARCELS

LAS VEGAS, NEVADA 89115



PARCEL 1

- APN 123-27-101-003 & 013
- ±4.30 acres
- Over 600' of I-15 Frontage
- Located at the Southwest corner of Centennial Parkway and Beesley Drive
- Adjacent to Meadow Gold Dairy and future developments
- Property NOT located in a 100 year flood plain (Per FIRM panel 1800)
- Property Taxes \$1,937.01 (per Clark County Assessor's Office)
- **SALE PRICE \$1,311,156.00 (\$7.00 PSF)**

PARCEL 2

- APN 123-27-701-003
- ±8.97 acres
- Adjacent to future industrial development(s)
- Property NOT located in a 100 year flood plain (Per FIRM panel 1800)
- Property Taxes \$3,867.14 (per Clark County Assessor's Office)
- **SALES PRICE \$2,305,326.00 (\$5.90 PSF)**

BRIAN RIFFEL SIOR

+1 702 836 3773

brian.riffel@colliers.com

TYLER JONES

+1 702 836 3754

tyler.jones@colliers.com

3960 Howard Hughes Parkway, Suite 150
Las Vegas, NV 89169
T +1 702 735 5700
www.colliers.com/lasvegas

LAS VEGAS, NEVADA 89115

