



- ✓ 1,186 SF office space on 2<sup>nd</sup> floor of Cornerstone Bank
- ✓ Conference room
- ✓ Corner executive office
- ✓ Break room
- ✓ Private offices
- ✓ Elevator served

LEASE RATE: \$2,275/month (\$23/SF) Full Service

**Lynn Holcomb, SIOR**  
[lholcomb@fishmancommercial.com](mailto:lholcomb@fishmancommercial.com)  
913.747.3301 O | 816.289.1526 C

**Ryan Holcomb**  
[rholcomb@fishmancommercial.com](mailto:rholcomb@fishmancommercial.com)  
913.747.3321 O | 913.526.2904 C



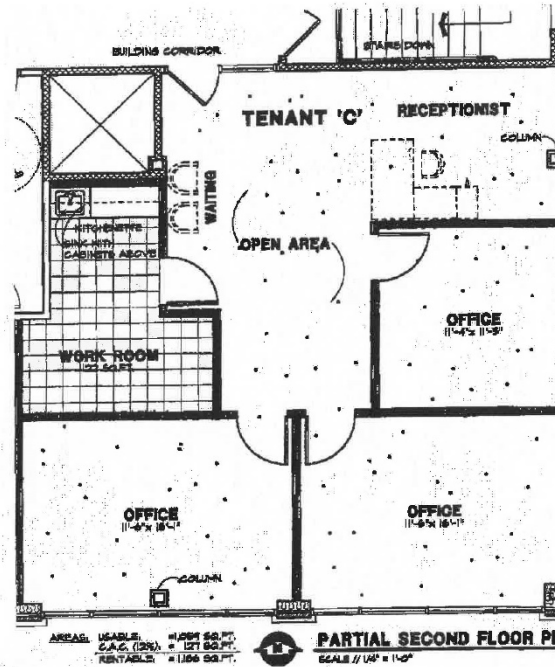


**Lynn Holcomb, SIOR**  
[lholcomb@fishmancommercial.com](mailto:lholcomb@fishmancommercial.com)  
913.747.3301 O | 816.289.1526 C

**Ryan Holcomb**  
[rholcomb@fishmancommercial.com](mailto:rholcomb@fishmancommercial.com)  
913.747.3321 O | 913.526.2904 C



EXHIBIT B  
SCOPE OF WORK



Lynn Holcomb, SIOR  
[lholcomb@fishmancommercial.com](mailto:lholcomb@fishmancommercial.com)  
913.747.3301 O | 816.289.1526 C

Ryan Holcomb  
[rholcomb@fishmancommercial.com](mailto:rholcomb@fishmancommercial.com)  
913.747.3321 O | 913.526.2904 C

