

**FOR LEASE**

# • Howland •

## LOCATION

2484 Niles-Cortland Rd.  
Howland, Ohio  
(US RT 46)

## DEMOGRAPHICS

### Population

1 mile 3,608  
3 mile 42,105  
5 mile 93,723

### Households

1 mile 1,341  
3 mile 17,058  
5 mile 37,846

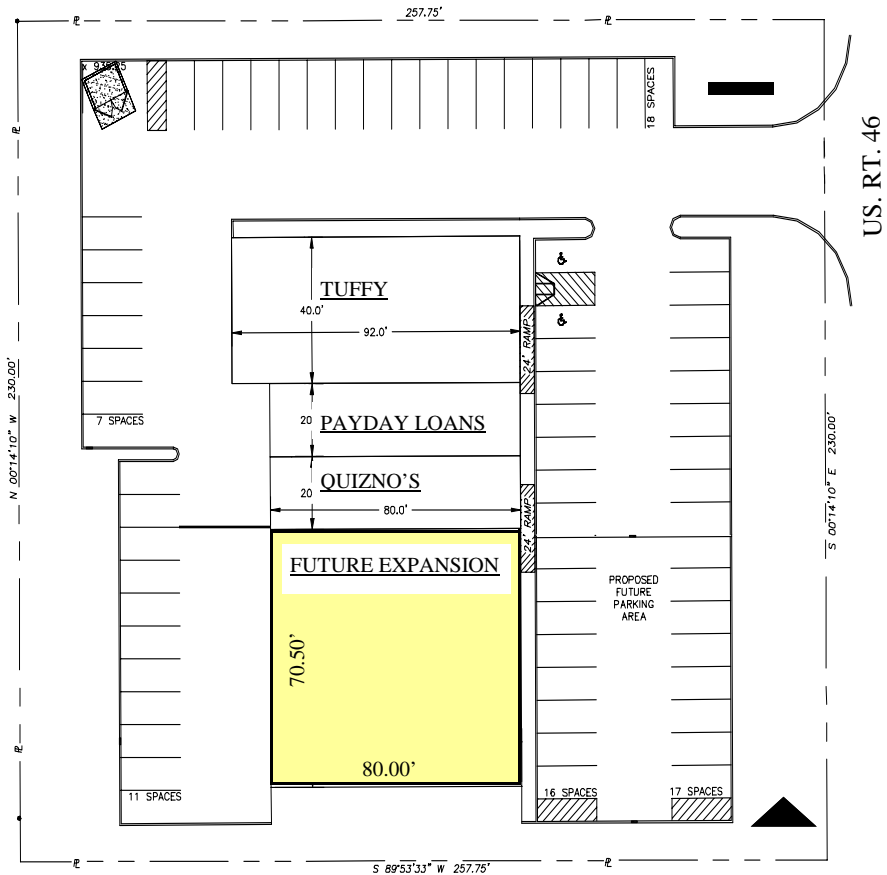
### Avg. Household Income

1 mile \$51,866  
3 mile \$47,192  
5 mile \$45,218

## CONTACT

Henry David DiRienzo  
926 Boardman-Poland Rd.  
Boardman, Ohio 44512

330.729.9044  
Fax 330.729.9046

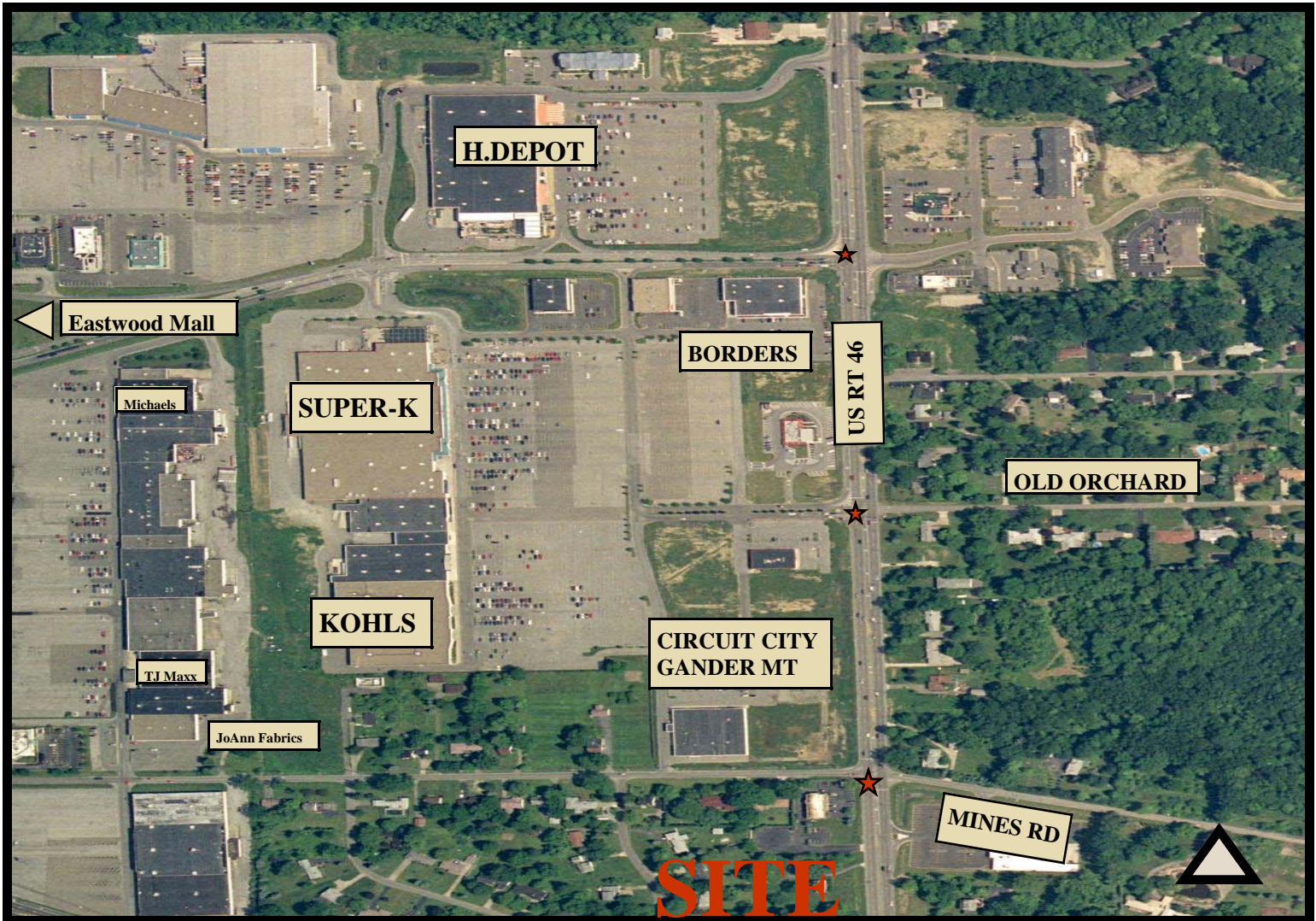


## **SITE INFORMATION**

|                |                    |                  |               |
|----------------|--------------------|------------------|---------------|
| <b>SITE</b>    | <b>1.36 acres</b>  | <b>BUILDING</b>  | <b>6880sf</b> |
| <b>SIZE</b>    | <b>230' x 258'</b> | <b>EXPANSION</b> | <b>5640sf</b> |
| <b>PARKING</b> | <b>69</b>          | <b>ZONING</b>    | <b>comm.</b>  |

**H.DIRIENZO PROPERTIES LTD.**

# Howland, Ohio



**VIEW LOOKING NORTH**

**H.DIRIENZO PROPERTIES LTD.**

Contact Henry D. DiRienzo @ 330.729.9044 ph 330.729.9046 fax





# H.DIRIENZO PROPERTIES LTD.

Contact Henry D. DiRienzo @ 330.729.9044 ph 330.729.9046 fax