

HILLSBORO CENTER FOR LEASE

900 SE OAK ST, HILLSBORO, OR

*Second-generation
medical space adjacent
to OHSU-Tuality
Hospital*

ALEXANDRA HENDERSON

Senior Vice President, Shareholder
503.830.5431
alexandra.henderson@kidder.com

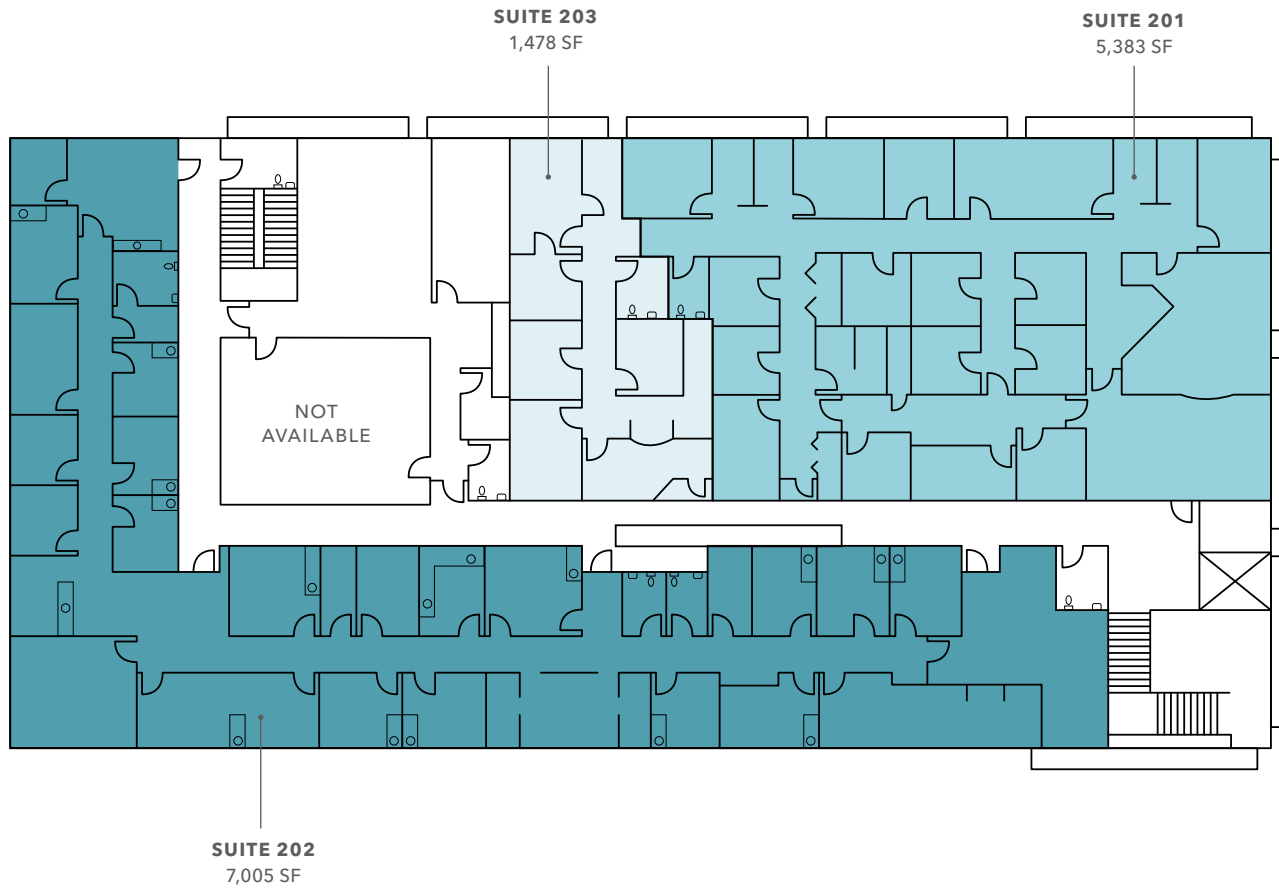
MARK FRASER

Senior Vice President, Shareholder
503.750.8200
mark.fraser@kidder.com

KIDDER.COM



FLOOR PLAN



*1,478 SF -
6,861 SF*

CONTIGUOUS (SUITES 201
& 202 COMBINED)

7,005 SF

(SUITE 203)

\$25.00/SF

MODIFIED GROSS (TENANT PAYS
UTILITIES AND JANITORIAL)

PROPERTY FEATURES

Second generation medical space
with plumbing throughout

Landlord will guaranty 4/ 1,000
parking

Exterior building signage
opportunity

Gurney sized elevator

Professionally managed



DEMOGRAPHICS

POPULATION

	1 Mile	2 Miles	3 Miles
2010 CENSUS	19,704	48,130	69,385
2020 CENSUS	19,910	49,136	74,043
2025 ESTIMATED	20,273	48,376	74,779
2030 PROJECTED	19,643	46,346	73,982

EMPLOYMENT & INCOME

	1 Mile	2 Miles	3 Miles
2025 MEDIAN	\$90,996	\$100,974	\$113,684
2030 MEDIAN PROJECTED	\$90,770	\$100,725	\$114,630
2025 AVERAGE	\$114,143	\$126,654	\$144,016
2030 AVERAGE PROJECTED	\$114,223	\$126,450	\$144,913

HOUSEHOLDS

	1 Mile	2 Miles	3 Miles
2025 ESTIMATED	6,697	16,664	26,667
2030 PROJECTED	6,628	16,292	26,867
2020 CENSUS	6,482	16,508	25,847
GROWTH 2025 - 2030	(0.2%)	(0.4%)	0.2%

Data Source: ©2026, Sites USA





Exclusively listed by

ALEXANDRA HENDERSON
Senior Vice President, Shareholder
503.830.5431
alexandra.henderson@kidder.com

MARK FRASER
Senior Vice President, Shareholder
503.750.8200
mark.fraser@kidder.com

KIDDER.COM

This information supplied herein is from sources we deem reliable. It is provided without any representation, warranty, or guarantee, expressed or implied as to its accuracy. Prospective Buyer or Tenant should conduct an independent investigation and verification of all matters deemed to be material, including, but not limited to, statements of income and expenses. Consult your attorney, accountant, or other professional advisor. All Kidder Mathews designs are the sole property of Kidder Mathews. Branded materials and layouts are not authorized for use by any other firm or person.