

34 MIDDLE NECK ROAD

GREAT NECK, NEW YORK



Perfect Retail Location Located Right In The Heart Of Great Neck Plaza

**Previously used as Bruce's Bakery and Muse Paintbar. Cooking gas line already exist in the place.
2,520 sq. ft. rentable plus basement. Back door opening with access to municipal parking lot.**

**Strategically located near the LIRR Station, approx. 20 minute ride to Manhattan.
Close to all eateries, cafe's, banks, and public transportation.**



ROZITA SOOMEKH

Licensed Real Estate Broker

Rozita.Soomekh@elliman.com

516.205.2279



34 MIDDLE NECK ROAD

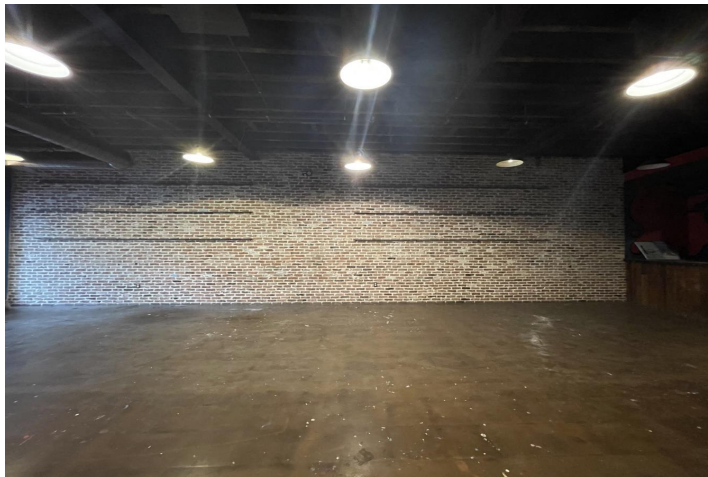
GREAT NECK, NEW YORK



RETAIL SPACE FOR LEASE

Approx. 2,500 SQ. FT.

\$9,000 / Monthly



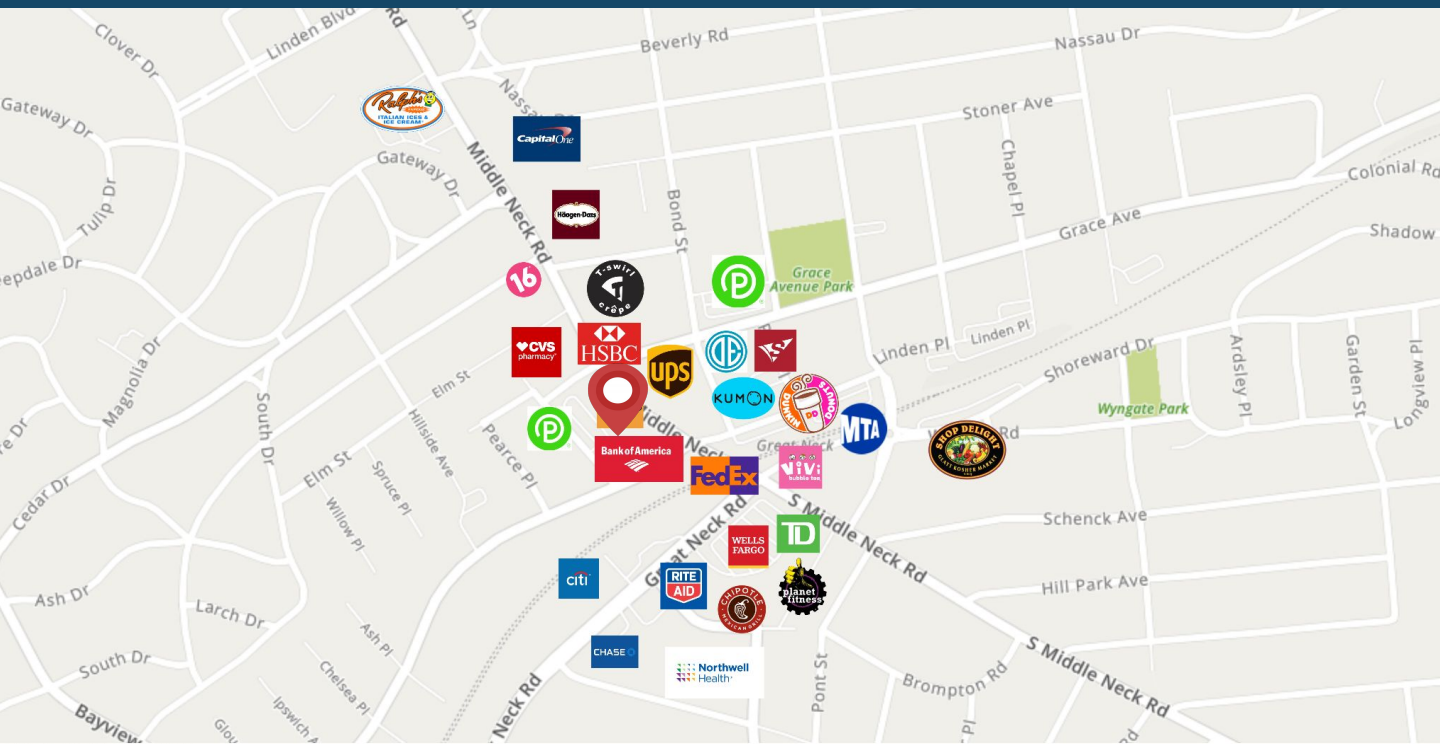
ROZITA SOOMEKH

Licensed Real Estate Broker

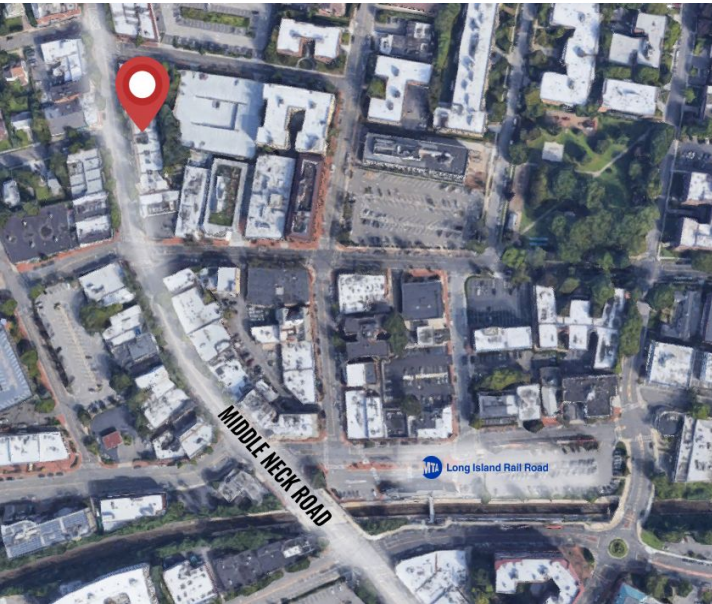
Rozita.Soomekh@elliman.com

516.205.2279





OTHER NOTABLE BUSINESSES IN THE AREA



THE SPACE IS LESS THAN 0.1 MILES FROM THE LIRR STATION, AND PUBLIC TRANSPORT HUB. IT IS LOCATED IN THE CENTER OF TOWN, CLOSE TO ALL EATERIES, CAFES, GYMS, BANKS, AND PUBLIC PARKING LOTS. HIGH EXPOSURE FROM THE BUSY STREET, HELPS SUPPORT ANY BUSINESS. TOWN THROWS EVENTS, SUCH AS OUTDOOR DINING, IN ORDER TO PROMOTE ALL THE BUSINESSES IN THE AREA.



ROZITA SOOMEKH

Licensed Real Estate Broker

Rozita.Soomekh@elliman.com

516.205.2279



GREAT NECK

NEW YORK

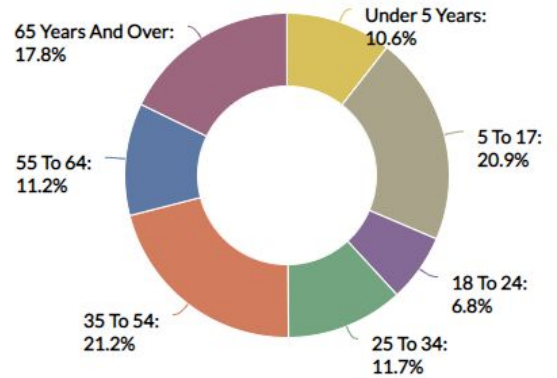


Great Neck is a region on Long Island, New York, that covers a peninsula on the North Shore and includes 9 villages, such as the villages of Great Neck, Great Neck Estates, Great Neck Plaza, Kings Point, and Russell Gardens, and a number of unincorporated areas, as well as an area south of the peninsula near Lake Success and the border territory of Queens.

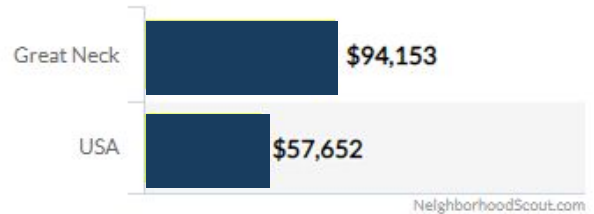
TOTAL POPULATION

±10,000

Age Demographic



MEDIAN HOUSEHOLD INCOME



CONTACT US

