

Access Retail Location Lifestyle Sustainability RealPage Flexibility Offices International Art Parks Turnpike
**INTERNATIONAL
BUSINESS PARK**

Dallas North Tollway

Work Innovate Walkable Growth

300 acres

ReachLocal

Corporate Campus

Technology

Platinum Corridor 3,000 employees Fiber and Power

Trees

Amenities

Restaurants



THE **retail** CONNECTION



INTERNATIONAL BUSINESS PARK

AVAILABLE

- 1,001 SF [shell]
- 1,202 SF [2nd generation]
- 1,184 SF [2nd generation salon]
- 3,802 SF [2nd generation restaurant]
- Pad sites available

RATE

Call for rates

DEMOGRAPHICS

	1 Mile	3 Miles	5 Miles
2019 Population	9,327	132,172	333,883
Est. 2024 Population	11,181	157,067	401,713
Average HH Income	\$116,997	\$110,944	\$110,608

TRAFFIC COUNTS

Hebron Pkwy	35,695 VPD
Midway Road	24,290 VPD

PROJECT DESCRIPTION

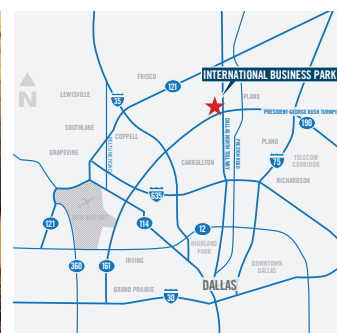
- 300-acre master-planned development
- Currently 10,000 employees in 11 Billingsley-owned buildings
- At full build-out, IBP will have 35 buildings serving over 150 companies and 21,000 employees
- Sloane Street, our new multi-family development planned with 500 units
- Steps from The Shops at Willow Bend
- Great visibility and signage opportunities on highly-traveled thoroughfare

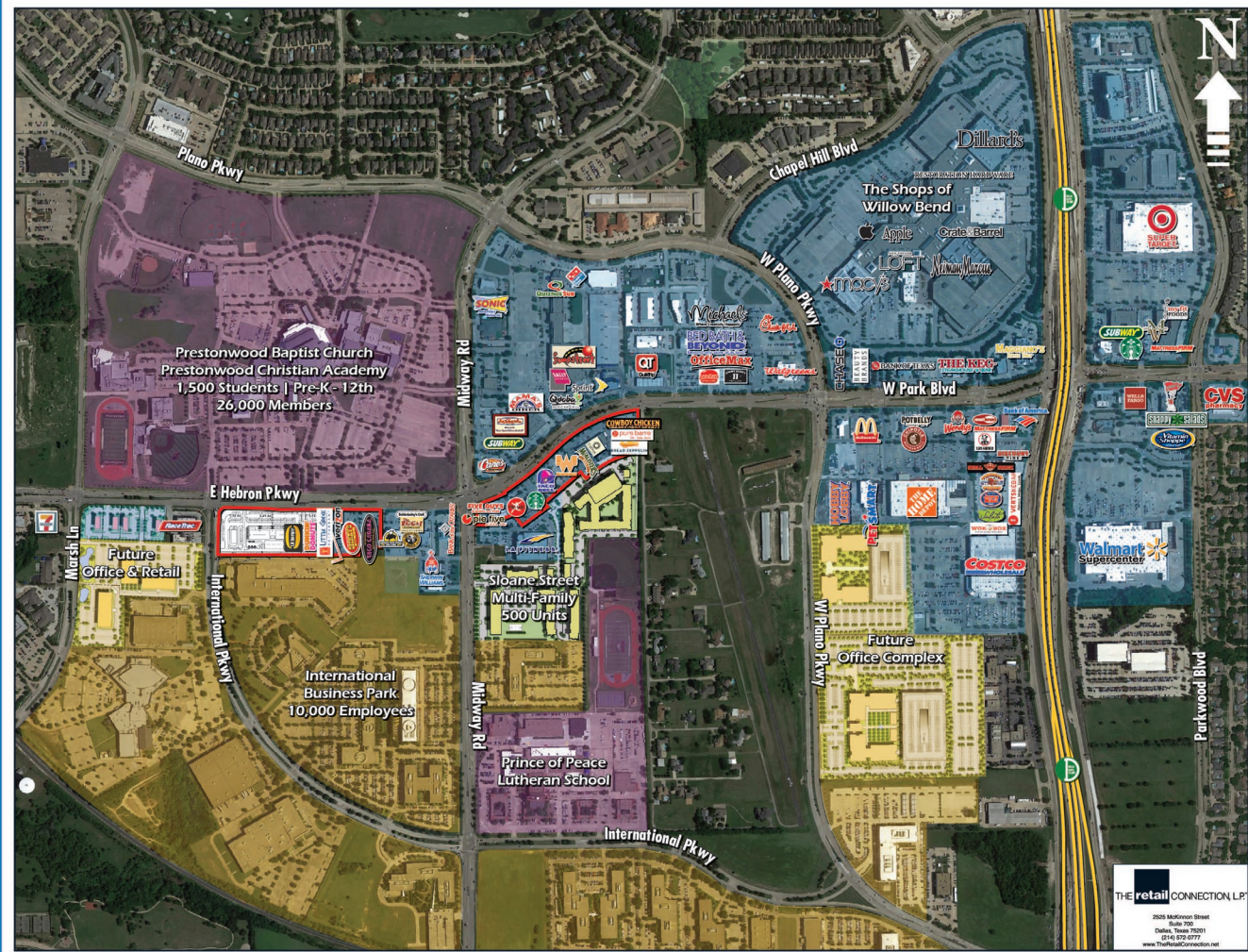
NEIGHBORING CORPORATE OFFICES

- Securus
- Great Lakes Educational
- ReachLocal
- Woot, Inc.
- Goodman Networks
- Digital Realty Trust
- Hyundai Capital
- MEDHOST

CONTACT

Shelley Taylor
 214.572.8423
 staylor@theretailconnection.net





R:\Mapublisher Data\Texas\DFW\Fliers\Carrollton - International Business Park\Aerial-JW.ai

This map was produced using data from private and government sources deemed to be reliable. The information herein is provided without representation or warranty.

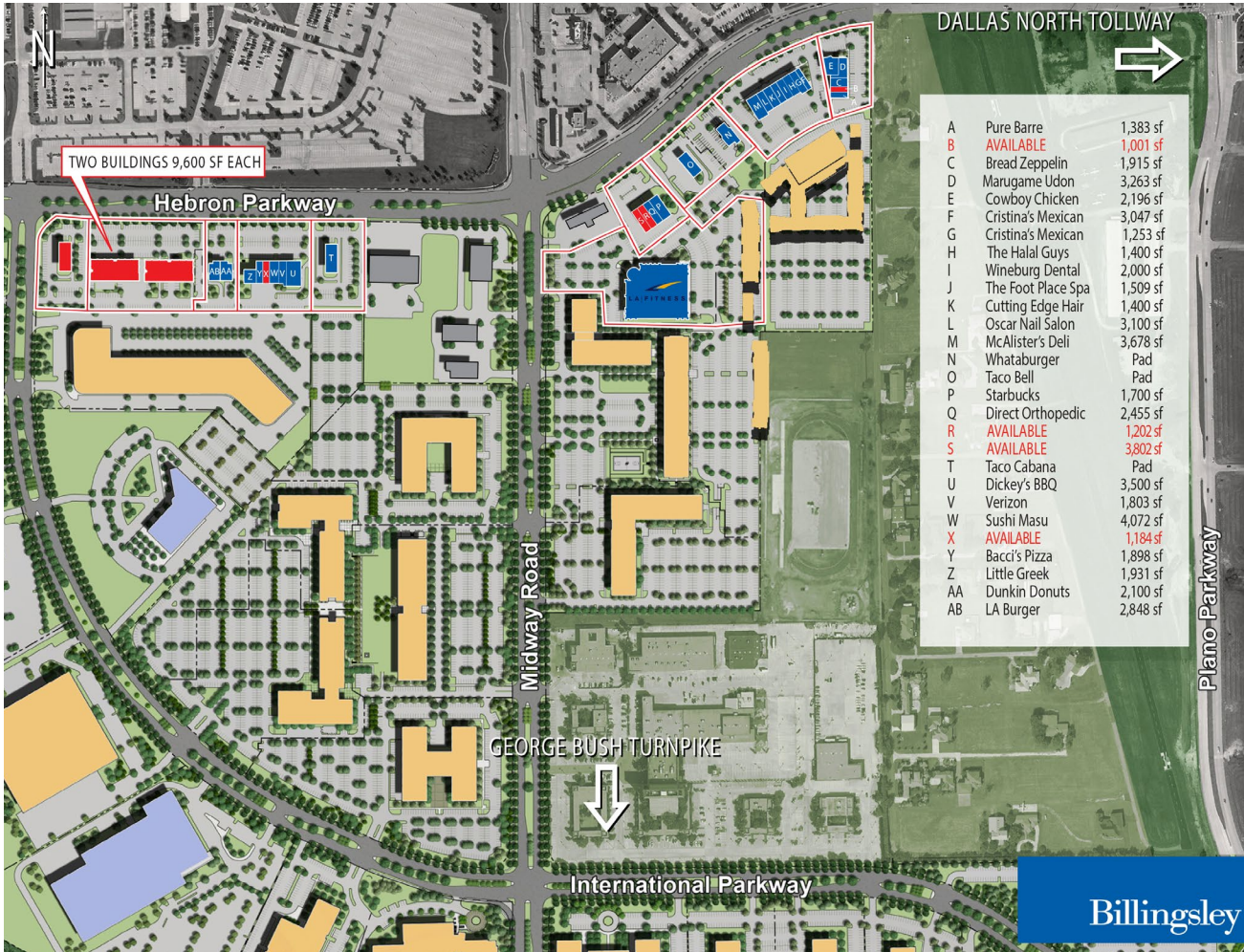
THE retail CONNECTION LP
 2828 Midkinnon Street
 Dallas, Texas 75201
 (214) 372-0777
www.TheRetailConnection.net



THE **retail** CONNECTION



We partner in creating life-enhancing communities.



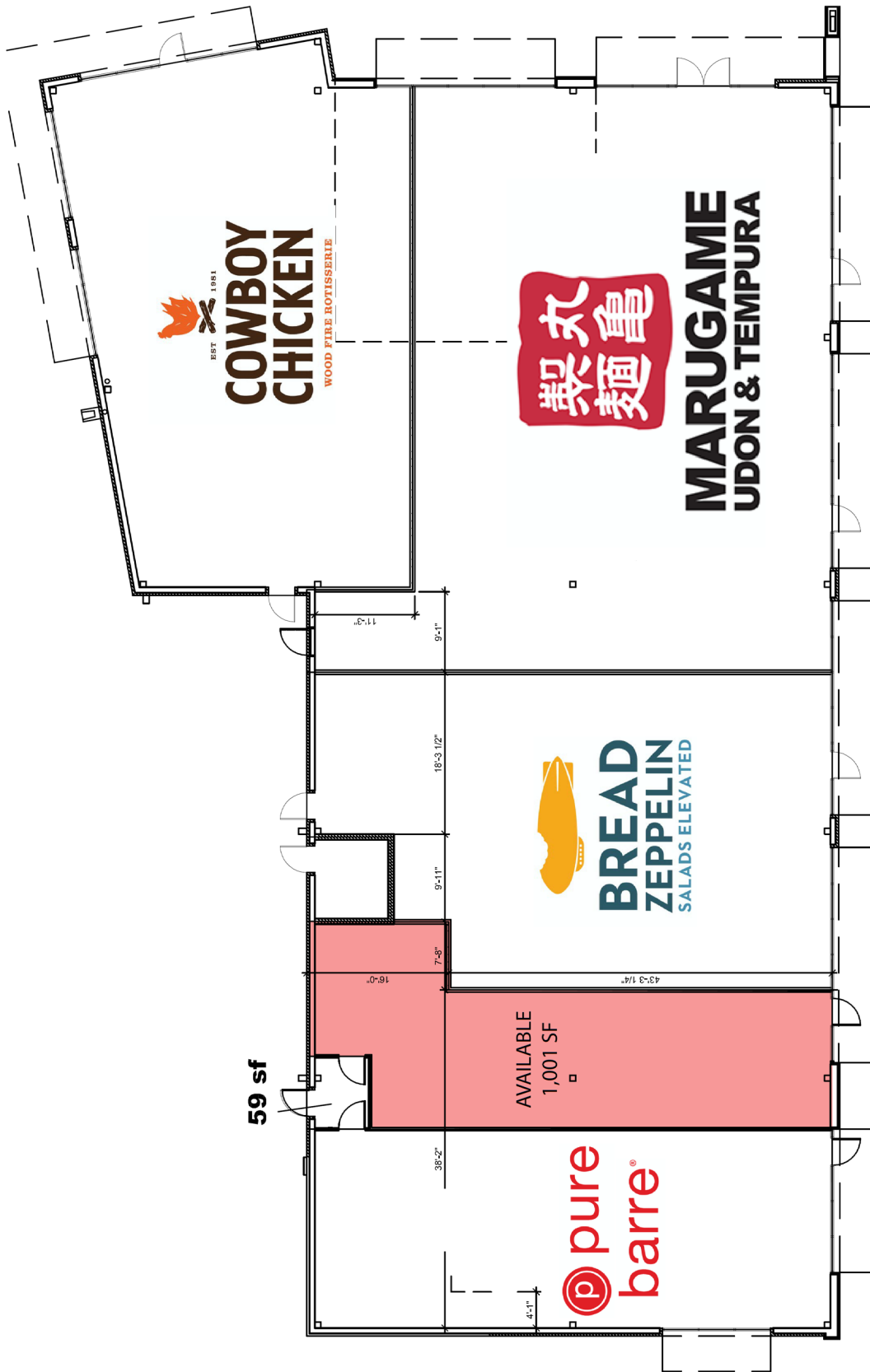
Billingsley



THE retail CONNECTION

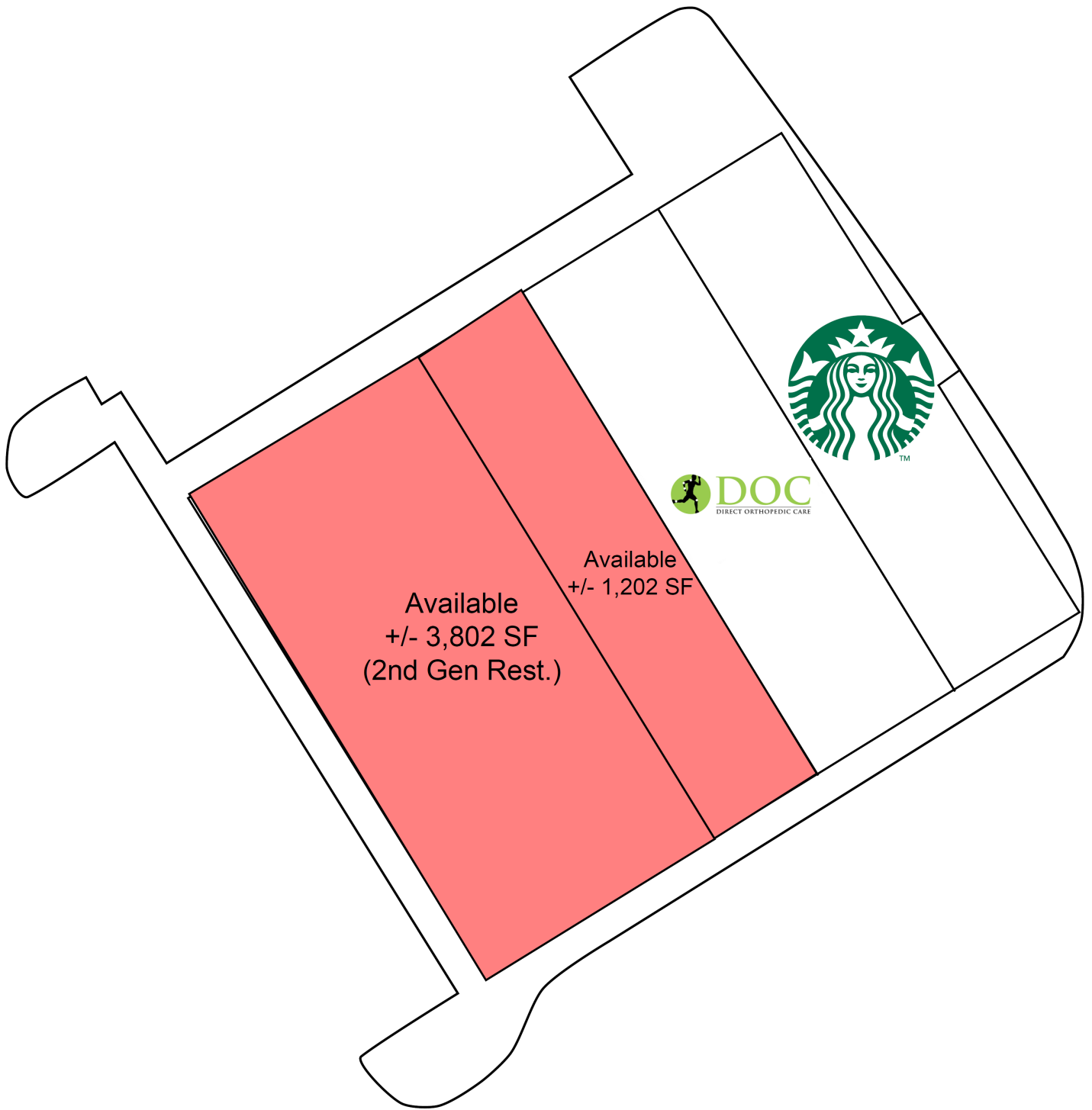


We partner in creating life-enhancing communities.



THE **retail** CONNECTION

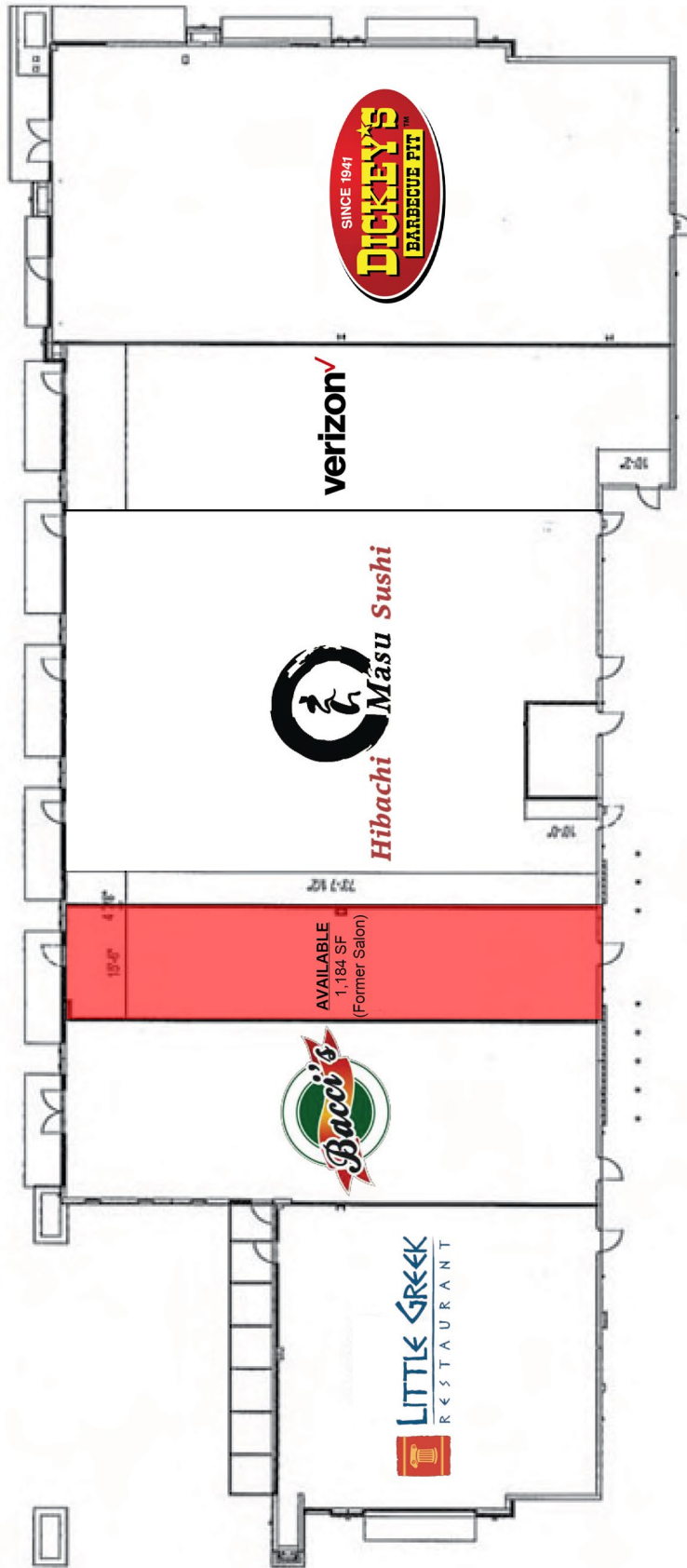




THE **retail** CONNECTION



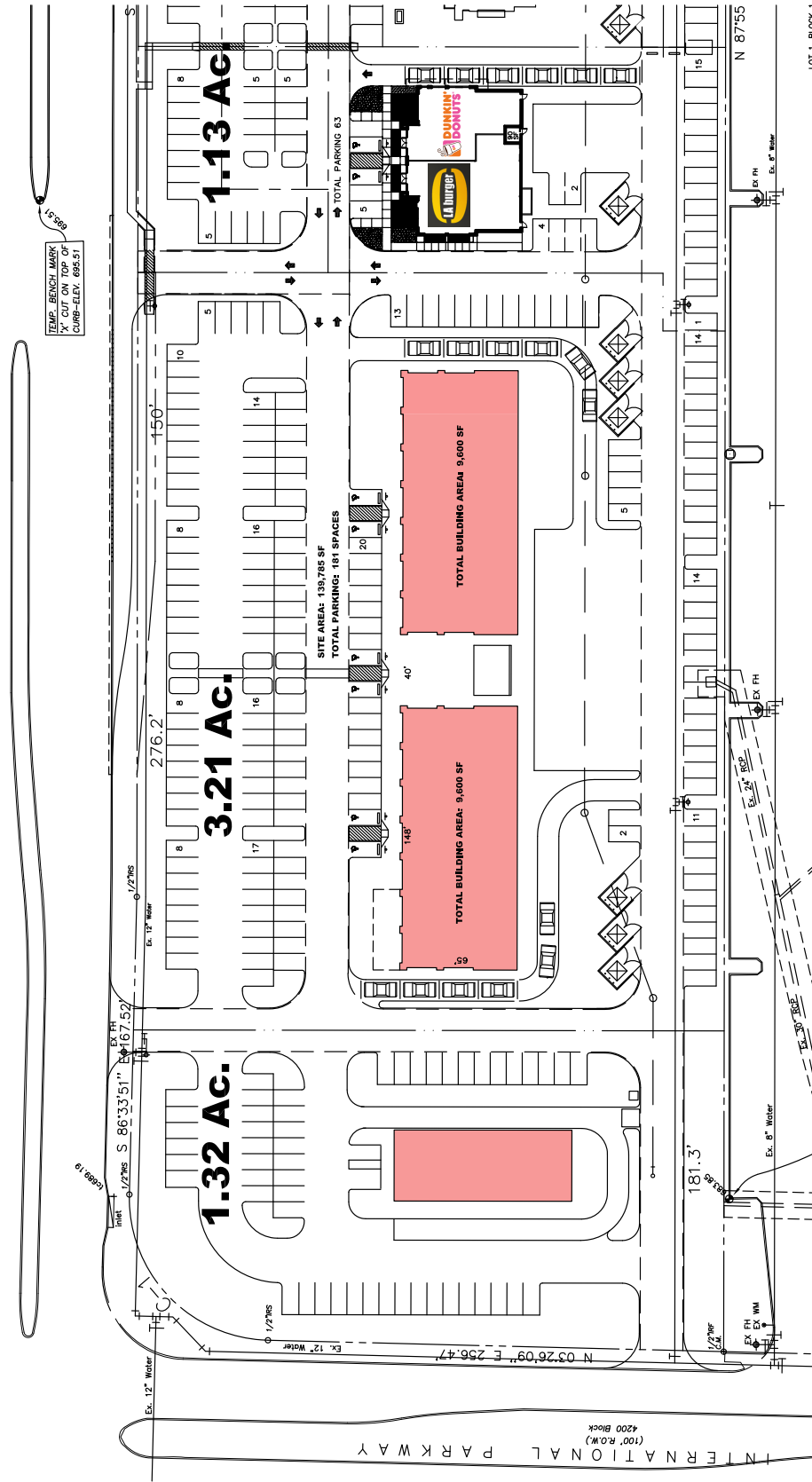
We partner in creating life-enhancing communities.



THE **retail** CONNECTION



We partner in creating life-enhancing communities.



LOT 1, BLOCK 1



THE **retail** CONNECTION



We partner in creating life-enhancing communities.