

SMALL OFFICES FOR LEASE

6025 Sepulveda Blvd., Van Nuys, CA 91411



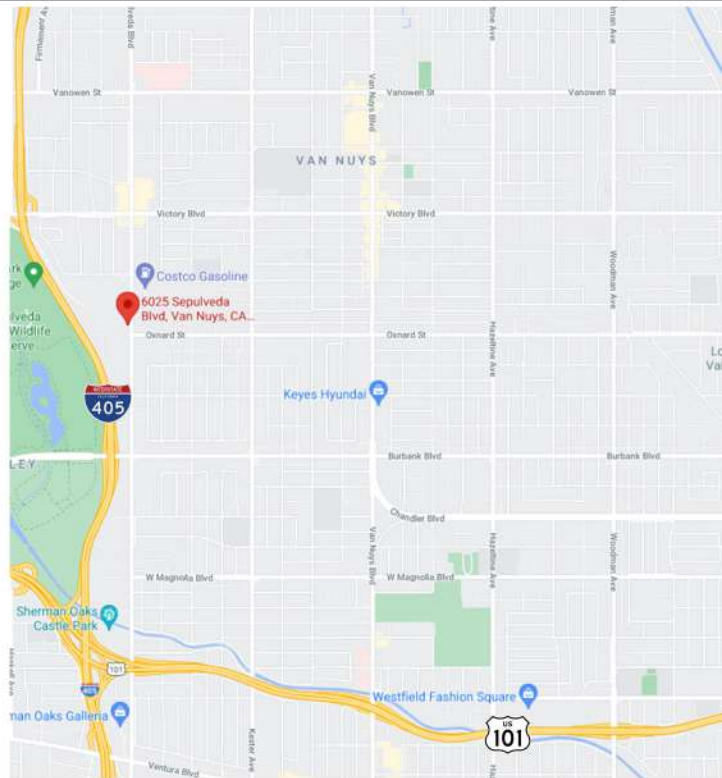
Suite 201: 450 SF
\$2.25 PSF MG

Suite 203: 200 SF
\$2.25 PSF MG

Suite 204: 800 SF
\$2.10 PSF MG

Suite 206: 960 SF
\$2.10 PSF MG

On Sepulveda Blvd between 405 On and Off ramps



For more
information
contact:

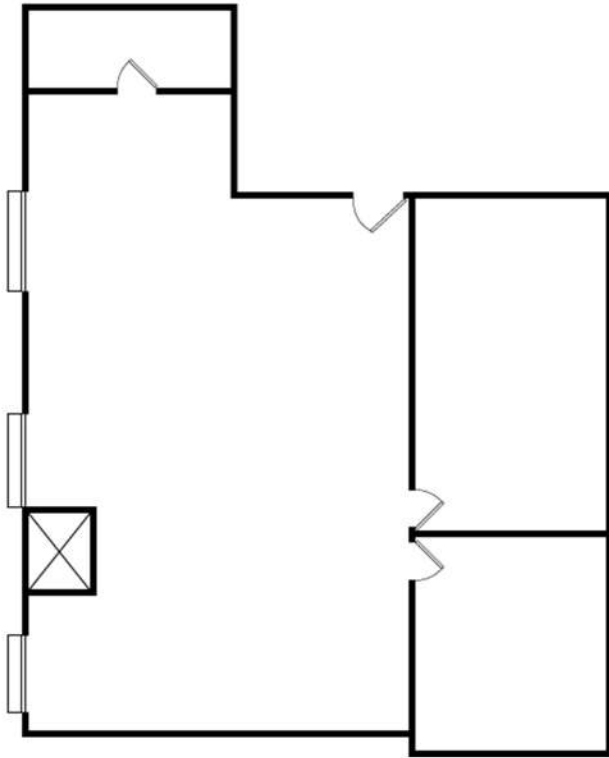
STAN GERSON
Tel. 818.849.3541
sgerson@beitler.com
BRE# 00797484

BEITLER

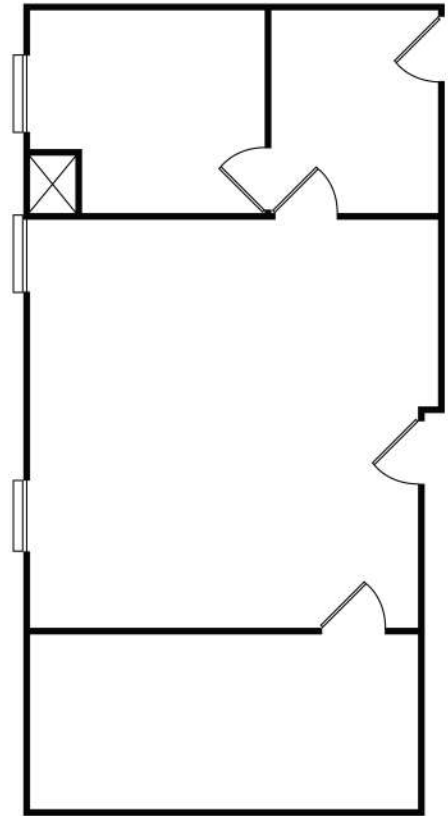
16300 Ventura Boulevard
Suite 100 Encino, CA 91436
Tel. 818-501-5001
www.Beitler.com

This information has been furnished from sources, which we deem reliable, but for which we assume no liability. The information contained herein is given in confidence with the understanding that all negotiations pertaining to this property be handled through submitting office. All measurements are approximate.

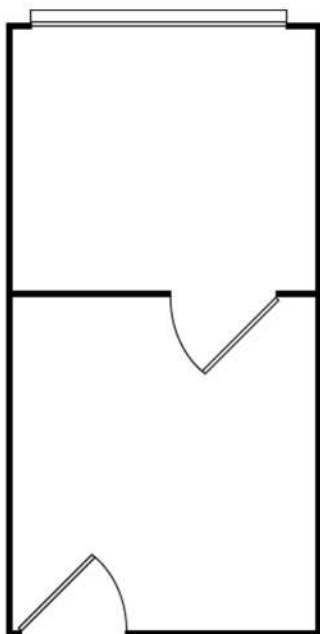
6025 Sepulveda Blvd, Van Nuys, CA 91411



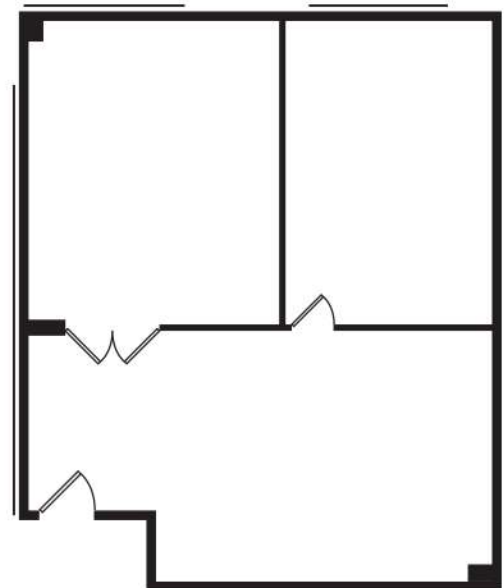
SUITE 206 - 960 SF



SUITE 204 - 800 SF



SUITE 203 - 200 SF



SUITE 201 - 450 SF