

FOR LEASE

 Carroll County, Maryland

686 & 688 POOLE ROAD

WESTMINSTER, MARYLAND 21157

AVAILABLE

686 Poole Road

Suite A: 1,128 sf*

Suite B: 1,128 sf*

*Contiguous up to 2,256 sf

688 Poole Road

Suite C: 2,176 sf

BUILDING SIZE

4,352 sf

RENTAL RATE

\$17.00/sf, modified gross

HIGHLIGHTS

- ▶ Existing medical space, with the ability to convert to professional office
- ▶ Ample parking
- ▶ Located within a medical complex
- ▶ Minutes to downtown Westminster and close to Carroll Hospital
- ▶ Easy access from MD-97

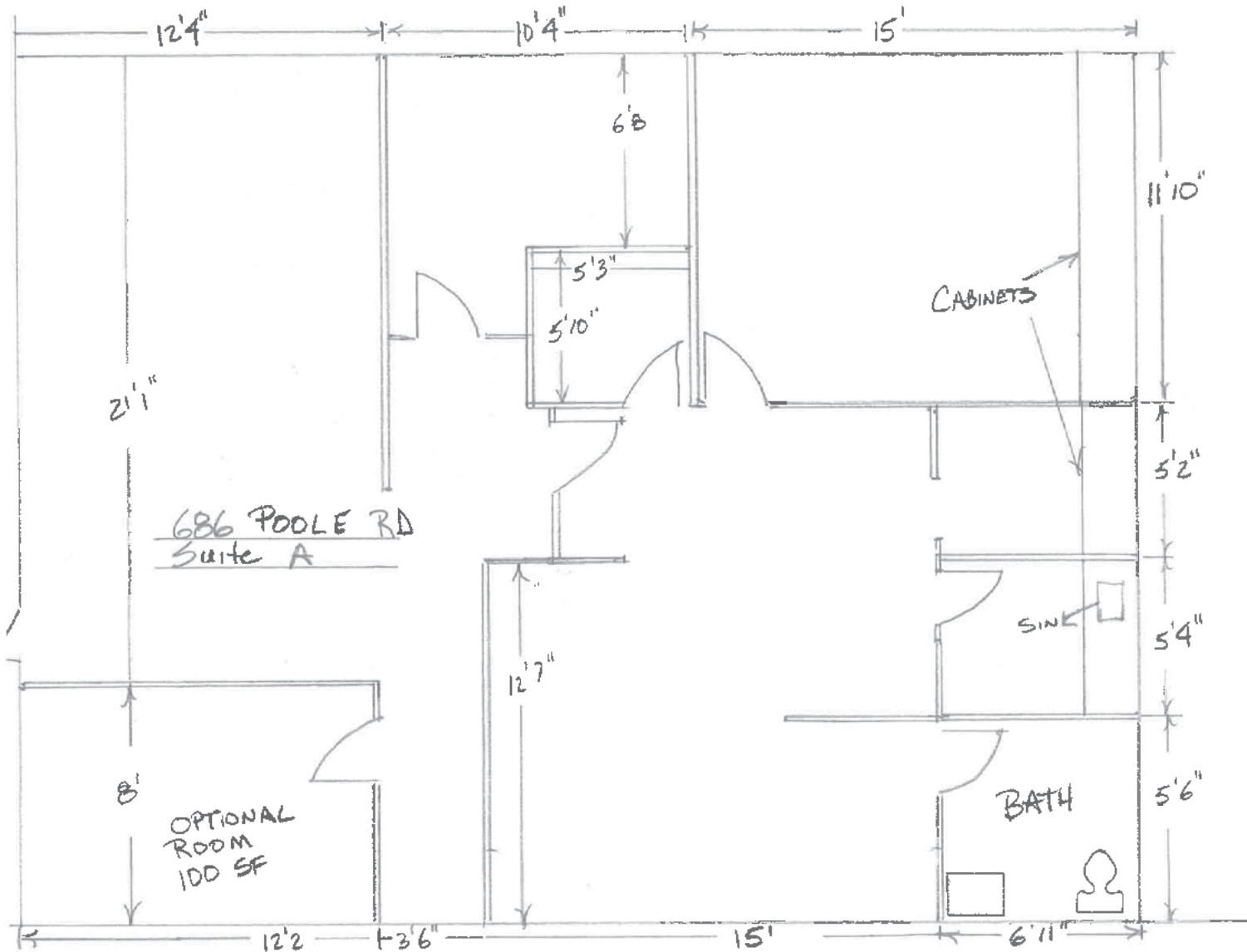


FOR LEASE

Carroll County, Maryland

FLOOR PLAN: 686 POOLE ROAD

686-688 POOLE ROAD | WESTMINSTER, MARYLAND 21157

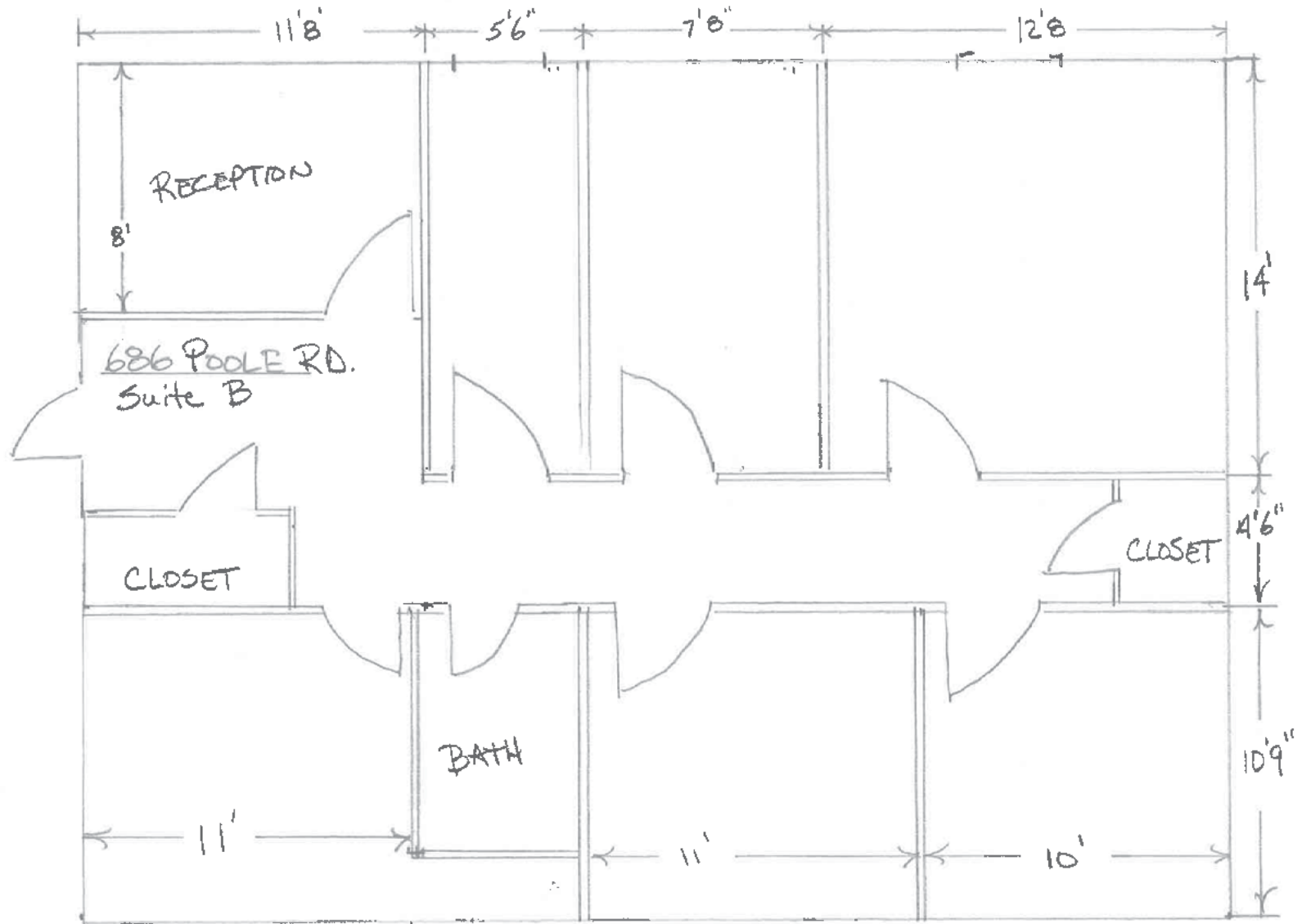


FOR LEASE

Carroll County, Maryland

FLOOR PLAN: 686 POOLE ROAD

686-688 POOLE ROAD | WESTMINSTER, MARYLAND 21157



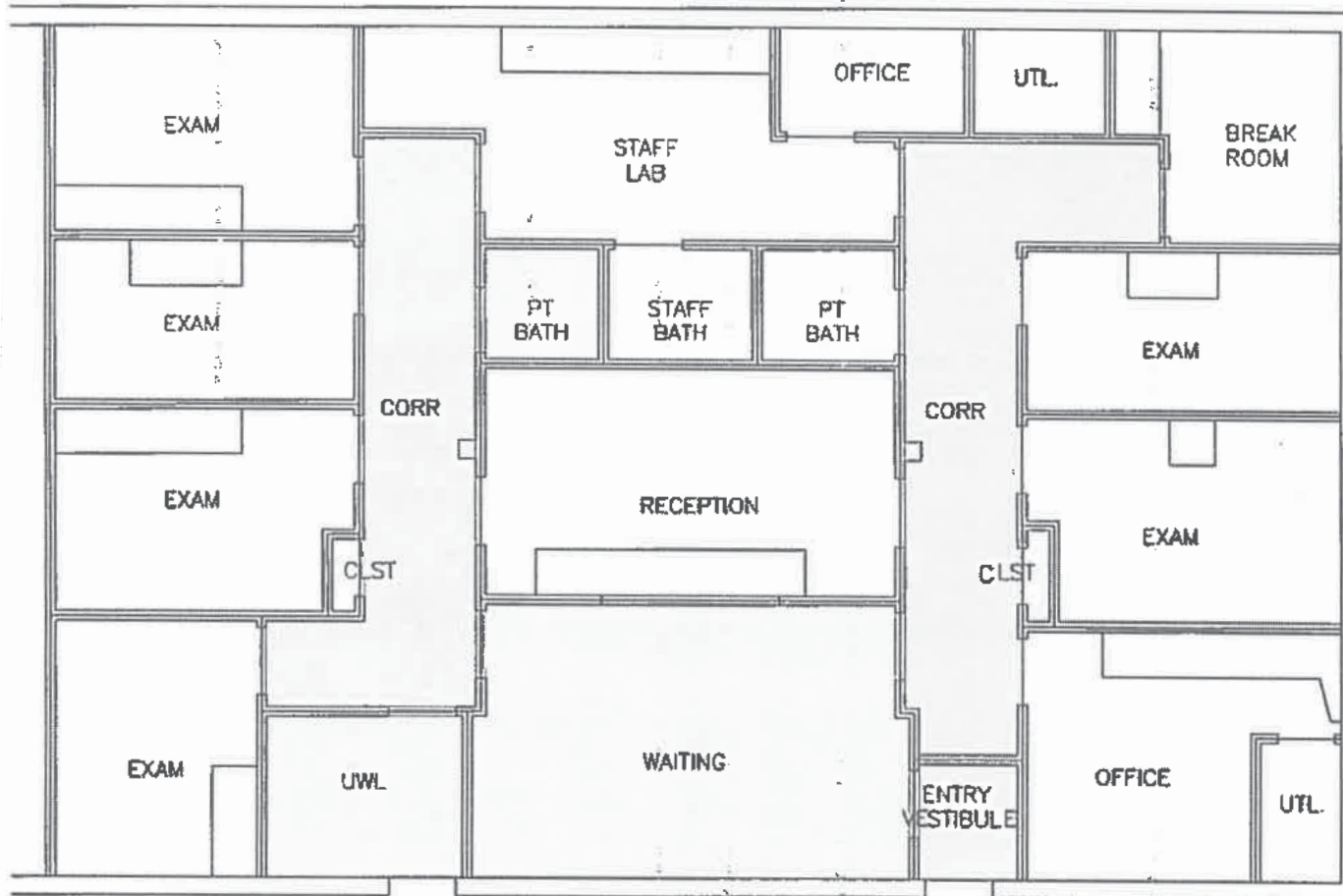
FOR LEASE

Carroll County, Maryland

FLOOR PLAN: 688 POOLE ROAD

686-688 POOLE ROAD | WESTMINSTER, MARYLAND 21157

Suite C: 2,176 sf



FOR LEASE

Carroll County, Maryland

LOCATION

686-688 POOLE ROAD | WESTMINSTER, MARYLAND 21157

