



Commercial Real Estate Solutions®

HEATHROW BUSINESS CENTER

160 International Pkwy, Heathrow, FL 32746

Property Overview

Heathrow Business Center stands as a two-story Class B establishment that houses multiple professional office spaces, located in Heathrow, FL.

One of its standout features is its location. The building is positioned at the intersection of International Pkwy and Lake Mary Blvd, a nexus of activity and connectivity. It's proximity to I-4 not only enhances accessibility but also offers heightened visibility, making it an ideal choice for business and medical practices.



Anthony Bernabe

(407) 634-2813 | abernabe@equity.net

Jordan Characo

(407) 634-4428 | jcharaco@equity.net

- ✓ Full-service leases, eliminating concerns about CAM charges.
- ✓ Its close proximity to I-4 not only guarantees excellent accessibility but also makes commuting hassle-free for both employees and clients.
- ✓ Situated at the intersection of International Pkwy and Lake Mary Blvd, the location ensures unparalleled connectivity.
- ✓ Abundant parking.

PROPERTY OVERVIEW



Commercial Real Estate Solutions®



PROPERTY ADDRESS

160 International Pkwy,
Heathrow, FL 32746



BUILDING AREA

24,497 SF RBA



PARKING

75 Spaces
(3.50/1,000 SF)



STORIES

2 Floors



ELEVATORS

1 with 0 freight



MUNICIPALITY

City of Lake Mary



AERIAL OVERVIEW



SITE

I-4 Exit

I-4 Exit

INTERSTATE
4

INTERSTATE
4

INTERNATIONAL PKWY

INTERSTATE-4

W LAKE MARY BLVD

W LAKE MARY BLVD

Winn-Dixie

Quest
Diagnostics

ADVANCED
DERMATOLOGY
and Cosmetic Surgery

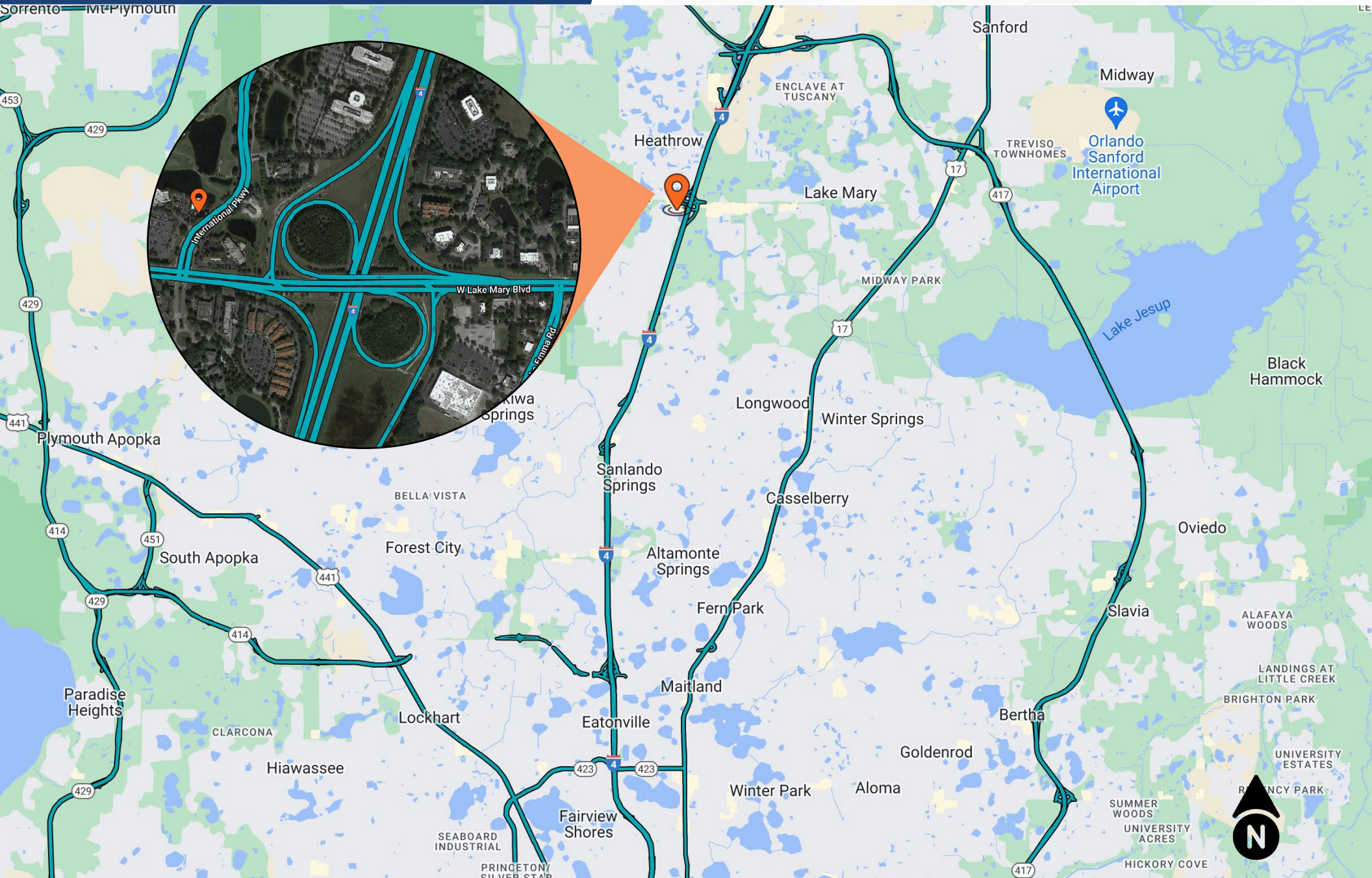
CVS
pharmacy



GEOGRAPHIC OVERVIEW



Commercial Real Estate Solutions®

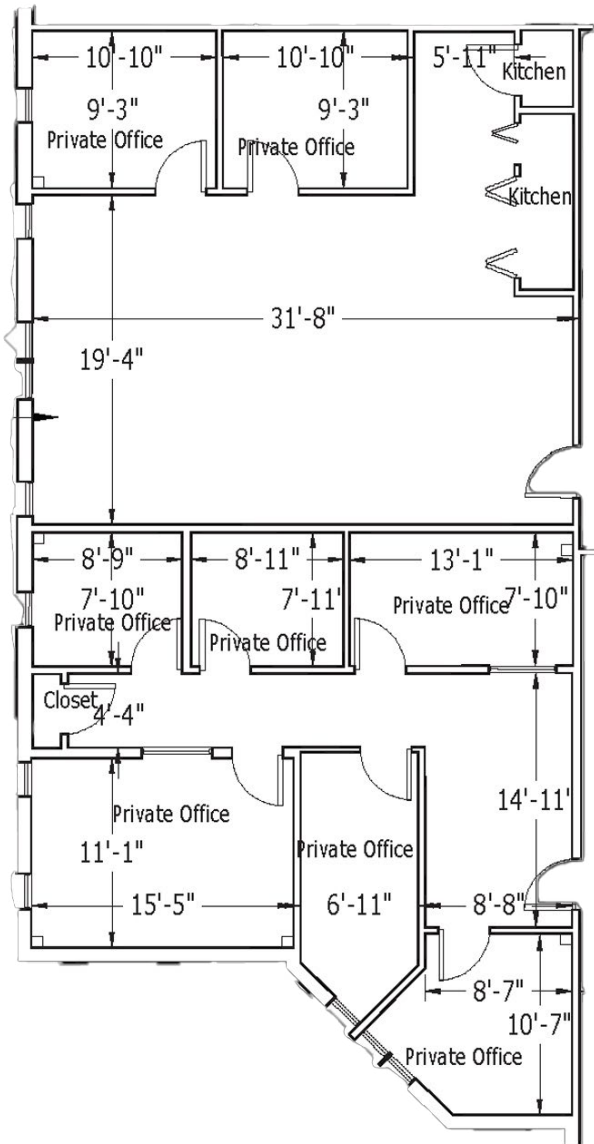


LEASING OPPORTUNITIES

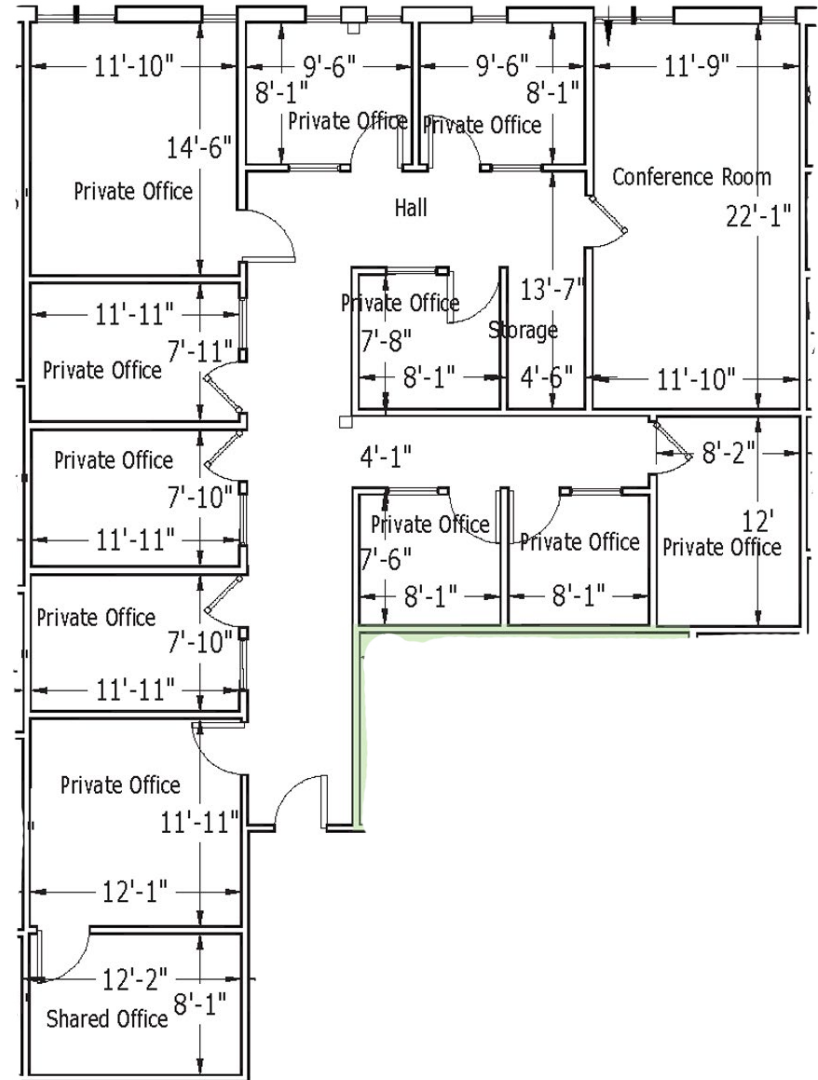


Commercial Real Estate Solutions®

Suite 110 | 2,280 RSF



Suite 100 | 2,400 RSF

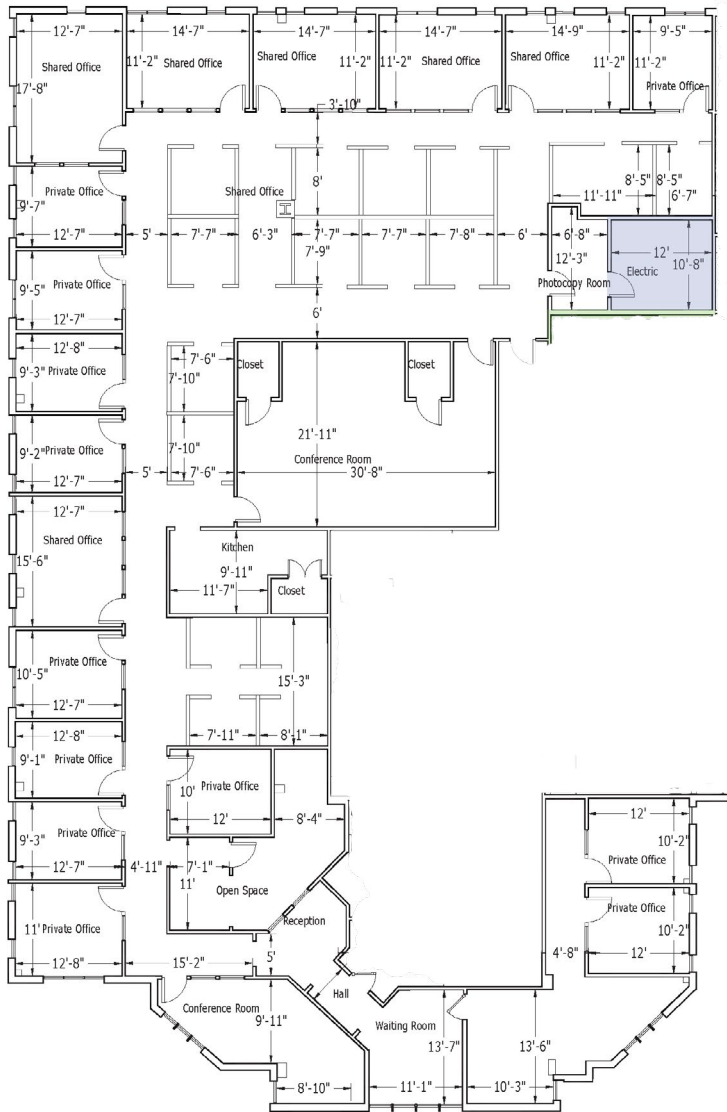


LEASING OPPORTUNITIES

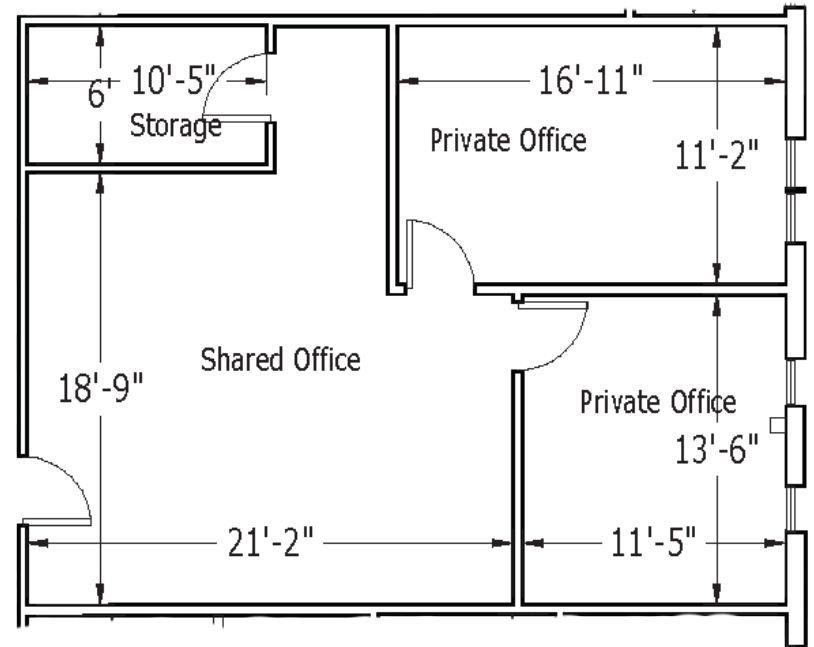


Commercial Real Estate Solutions®

Suite 200 | 8,884 RSF



Suite 270 | 1,025 RSF



Contact Us

Anthony Bernabe

(407) 634-2813 | abernabe@equity.net

Jordan Characo

(407) 634-4428 | jcharaco@equity.net

