



## 1419 N. San Fernando Blvd

Burbank, California 91504

### Property Highlights

- 7 offices, kitchen and large bullpen
- Free Parking

### Property Description

For lease at \$2.20 per SF

Excellent Burbank location with easy access to nearby freeways.

Walking distance from restaurants and other amenities

### OFFERING SUMMARY

Lease Rate:	\$2.20 SF/month (Full Service)
Available SF:	3,200 SF
Lot Size:	18,922 SF
Building Size:	12,250 SF

### DEMOGRAPHICS

	0.5 MILES	1 MILE	1.5 MILES
Total Households	3,040	10,474	21,369
Total Population	7,792	26,578	53,455
Average HH Income	\$76,585	\$77,629	\$75,879





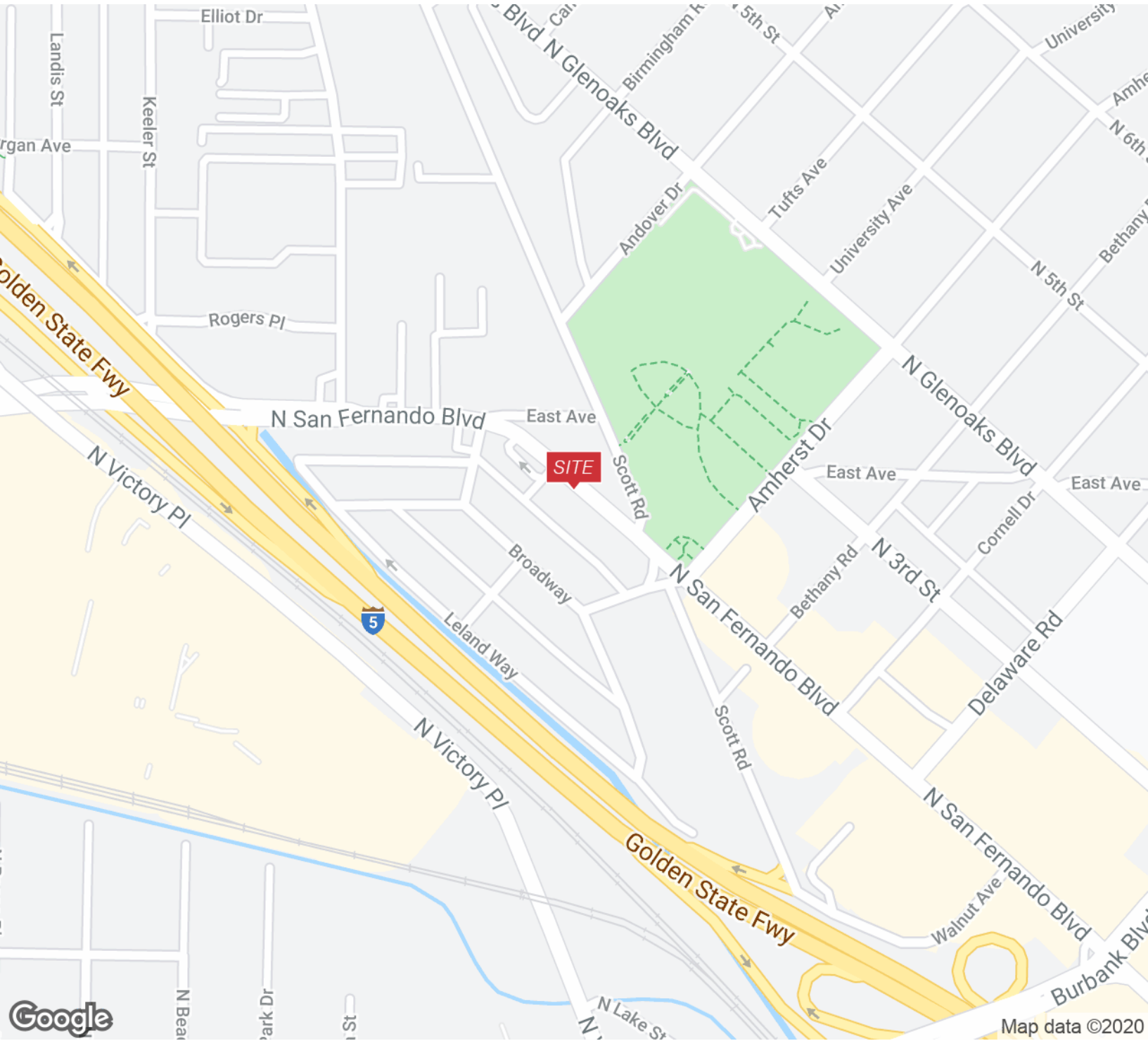
FOR LEASE



-



3,200 SF



Map data ©2020

**Adam Comora**

Senior Vice President | 818.742.1610

acomora@naicapital.com | CalDRE #01312271



www.naicapital.com

NO WARRANTY, EXPRESS OR IMPLIED, IS MADE AS TO THE ACCURACY OF THE INFORMATION CONTAINED HEREIN. THIS INFORMATION IS SUBMITTED SUBJECT TO ERRORS, OMISSIONS, CHANGE OF PRICE, RENTAL OR OTHER CONDITIONS, WITHDRAWAL WITHOUT NOTICE, AND IS SUBJECT TO ANY SPECIAL LISTING CONDITIONS IMPOSED BY OUR PRINCIPALS. COOPERATING BROKERS, BUYERS, TENANTS AND OTHER PARTIES WHO RECEIVE THIS DOCUMENT SHOULD NOT RELY ON IT, BUT SHOULD USE IT AS A STARTING POINT OF ANALYSIS, AND SHOULD INDEPENDENTLY CONFIRM THE ACCURACY OF THE INFORMATION CONTAINED HEREIN THROUGH A DUE DILIGENCE REVIEW OF THE BOOKS, RECORDS, FILES AND DOCUMENTS THAT CONSTITUTE RELIABLE SOURCES OF THE INFORMATION DESCRIBED HEREIN. LOGOS ARE FOR IDENTIFICATION PURPOSES ONLY AND MAY BE TRADEMARKS OF THEIR RESPECTIVE COMPANIES. NAI CAPITAL, INC. CAL DRE LIC. #01980696.



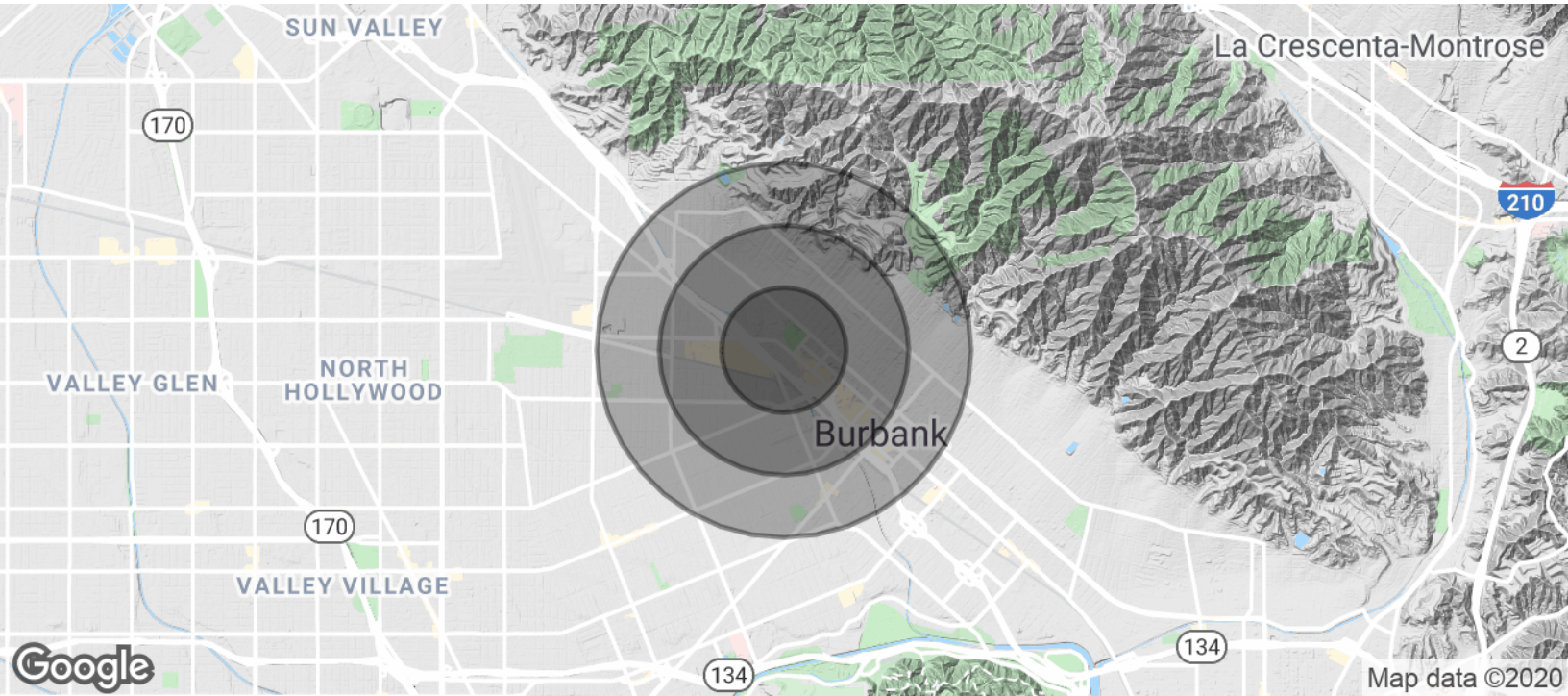
FOR LEASE



-



3,200 SF



POPULATION	0.5 MILES	1 MILE	1.5 MILES
Total Population	7,792	26,578	53,455
Average age	36.2	38.6	38.6
Average age (Male)	36.6	37.9	37.8
Average age (Female)	35.3	38.8	38.9
HOUSEHOLDS & INCOME	0.5 MILES	1 MILE	1.5 MILES
Total households	3,040	10,474	21,369
# of persons per HH	2.6	2.5	2.5
Average HH income	\$76,585	\$77,629	\$75,879
Average house value	\$551,621	\$602,617	\$620,344

\* Demographic data derived from 2010 US Census

**Adam Comora**

Senior Vice President | 818.742.1610

acomora@naicapital.com | CalDRE #01312271





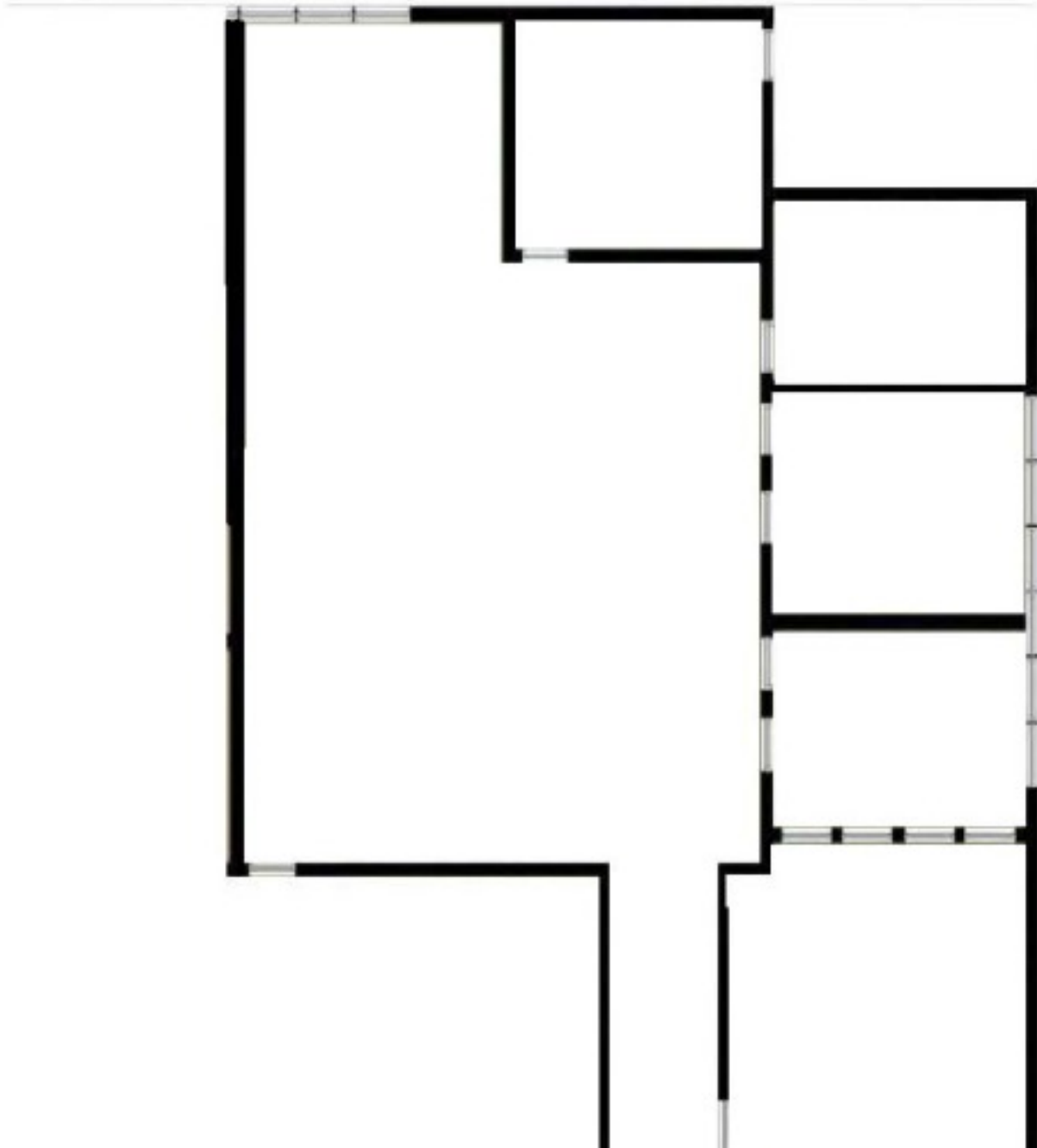
FOR LEASE



-



3,200 SF



[www.naicapital.com](http://www.naicapital.com)

**Adam Comora**

Senior Vice President | 818.742.1610  
acomora@naicapital.com | CalDRE #01312271

NO WARRANTY, EXPRESS OR IMPLIED, IS MADE AS TO THE ACCURACY OF THE INFORMATION CONTAINED HEREIN. THIS INFORMATION IS SUBMITTED SUBJECT TO ERRORS, OMISSIONS, CHANGE OF PRICE, RENTAL OR OTHER CONDITIONS, WITHDRAWAL WITHOUT NOTICE, AND IS SUBJECT TO ANY SPECIAL LISTING CONDITIONS IMPOSED BY OUR PRINCIPALS. COOPERATING BROKERS, BUYERS, TENANTS AND OTHER PARTIES WHO RECEIVE THIS DOCUMENT SHOULD NOT RELY ON IT, BUT SHOULD USE IT AS A STARTING POINT OF ANALYSIS, AND SHOULD INDEPENDENTLY CONFIRM THE ACCURACY OF THE INFORMATION CONTAINED HEREIN THROUGH A DUE DILIGENCE REVIEW OF THE BOOKS, RECORDS, FILES AND DOCUMENTS THAT CONSTITUTE RELIABLE SOURCES OF THE INFORMATION DESCRIBED HEREIN. LOGOS ARE FOR IDENTIFICATION PURPOSES ONLY AND MAY BE TRADEMARKS OF THEIR RESPECTIVE COMPANIES. NAI CAPITAL, INC. CAL DRE LIC. #01990696.