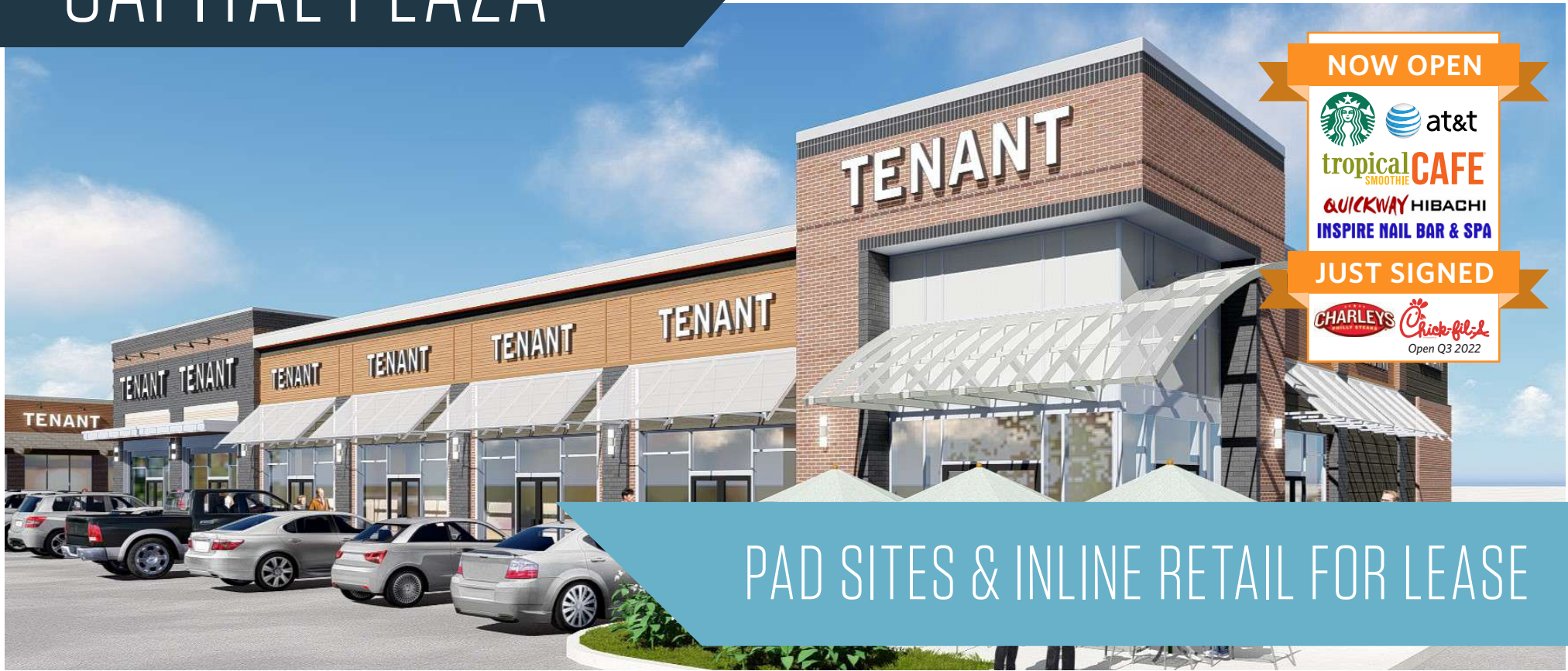


# CAPITAL PLAZA

6200 Annapolis Road, Landover Hills, MD 20784  
Prince George's County



## PAD SITES & INLINE RETAIL FOR LEASE

JOIN: Walmart 



tropical CAFE  
SMOOTHIE

ROYAL  
FARMS



- Exciting redevelopment of Capital Plaza Mall
- Available Space: Jr. Anchor, inline, and pad sites
- Easy access to Baltimore Washington Parkway (I-295)
- Special liquor license legislation for restaurants - a license at Capital Plaza does not count against County Quota and earns a bonus license

Joe Mekulski  
jmekulski@klnb.com  
443-632-1343

John Meyer  
jmeyer@klnb.com  
443-632-2052

Brian Finkelstein  
bfinkelstein@klnb.com  
443-632-2076

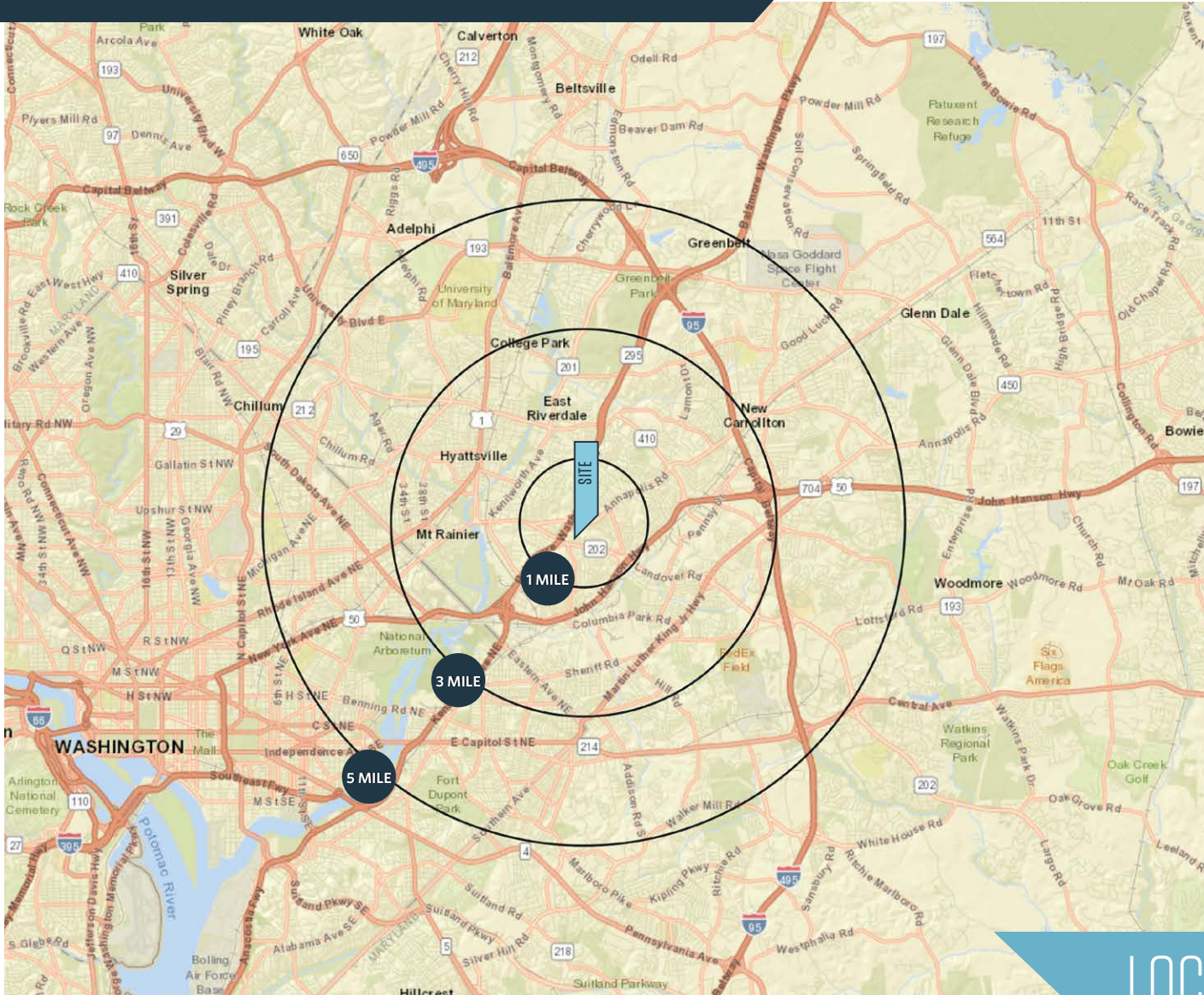
100 West Road, Suite 505  
Towson, MD 21204  
klnb.com

klnb



# CAPITAL PLAZA

6200 Annapolis Road, Landover Hills, MD 20784  
Prince George's County



## AVAILABLE SPACE

Jr. Anchor, Inline, and Pad Sites

## DEMOGRAPHICS | 2021:

1-MILE	3-MILE	5-MILE
Population		
24,238	152,079	447,412
Daytime Population		
4,911	52,231	183,475
Households		
8,068	50,968	156,168
Average HH Income		
\$81,570	\$84,399	\$87,933

[CLICK TO DOWNLOAD DEMOGRAPHIC REPORT](#)

## TRAFFIC COUNTS | 2019:

I-295	111,002 ADT
Annapolis Road	36,741 ADT

## LOCATION & DEMOGRAPHICS

Joe Mekulski  
jmekulski@klnb.com  
443-632-1343

John Meyer  
jmeyer@klnb.com  
443-632-2052

Brian Finkelstein  
bfinkelstein@klnb.com  
443-632-2076

100 West Road, Suite 505  
Towson, MD 21204  
klnb.com





# CAPITAL PLAZA

6200 Annapolis Road, Landover Hills, MD 20784  
Prince George's County



MARKET AERIAL

Joe Mekulski  
jmekulski@klnb.com  
443-632-1343

John Meyer  
jmeyer@klnb.com  
443-632-2052

Brian Finkelstein  
bfinkelstein@klnb.com  
443-632-2076

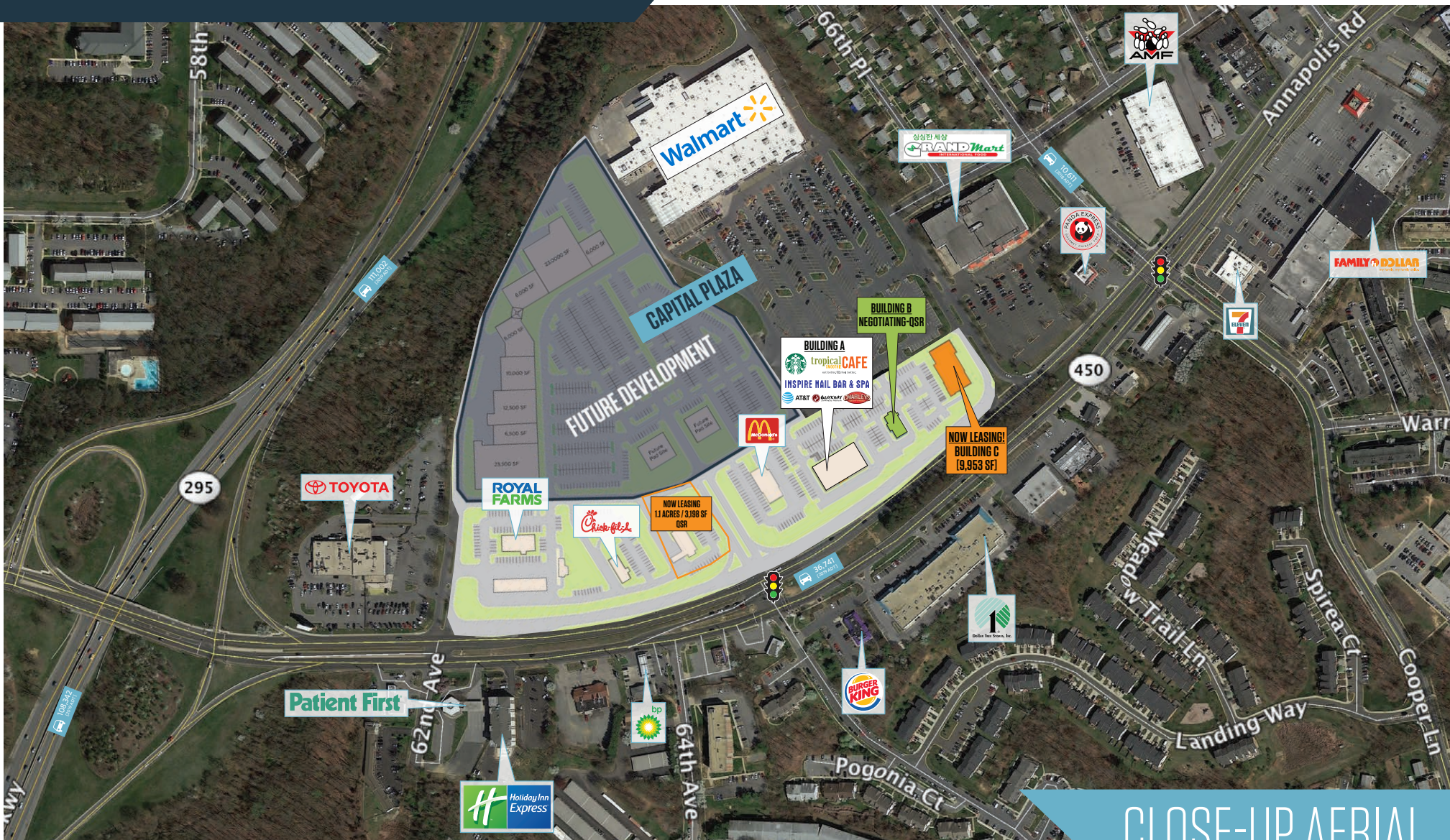
100 West Road, Suite 505  
Towson, MD 21204  
klnb.com





# CAPITAL PLAZA

6200 Annapolis Road, Landover Hills, MD 20784  
Prince George's County



CLOSE-UP AERIAL

Joe Mekulski  
jmekulski@klnb.com  
443-632-1343

John Meyer  
jmeyer@klnb.com  
443-632-2052

Brian Finkelstein  
bfinkelstein@klnb.com  
443-632-2076

100 West Road, Suite 505  
Towson, MD 21204  
klnb.com





# CAPITAL PLAZA

6200 Annapolis Road, Landover Hills, MD 20784  
Prince George's County



SITE PLAN

Joe Mekulski  
jmekulski@klnb.com  
443-632-1343

John Meyer  
jmeyer@klnb.com  
443-632-2052

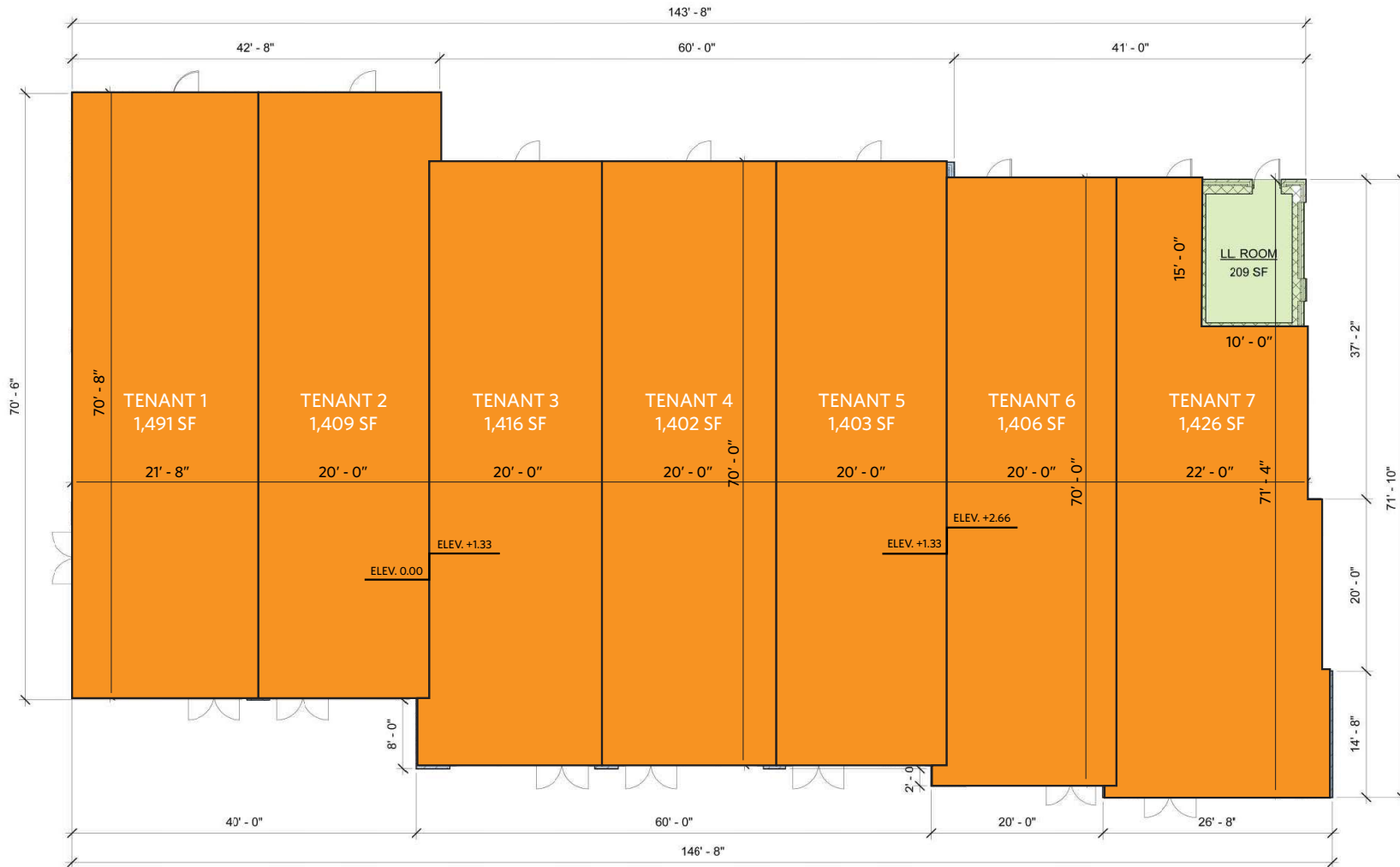
Brian Finkelstein  
bfinkelstein@klnb.com  
443-632-2076

100 West Road, Suite 505  
Towson, MD 21204  
klnb.com



# CAPITAL PLAZA

6200 Annapolis Road, Landover Hills, MD 20784  
Prince George's County



## BUILDING "C" SITE PLAN

Joe Mekulski  
jmekulski@klnb.com  
443-632-1343

John Meyer  
jmeyer@klnb.com  
443-632-2052

Brian Finkelstein  
bfinkelstein@klnb.com  
443-632-2076

100 West Road, Suite 505  
Towson, MD 21204  
klnb.com



# CAPITAL PLAZA

6200 Annapolis Road, Landover Hills, MD 20784  
Prince George's County



Joe Mekulski  
jmekulski@klnb.com  
443-632-1343

John Meyer  
jmeyer@klnb.com  
443-632-2052

Brian Finkelstein  
bfinkelstein@klnb.com  
443-632-2076

100 West Road, Suite 505  
Towson, MD 21204  
klnb.com



# CAPITAL PLAZA

6200 Annapolis Road, Landover Hills, MD 20784  
Prince George's County

United States Maryland Local: 15mi

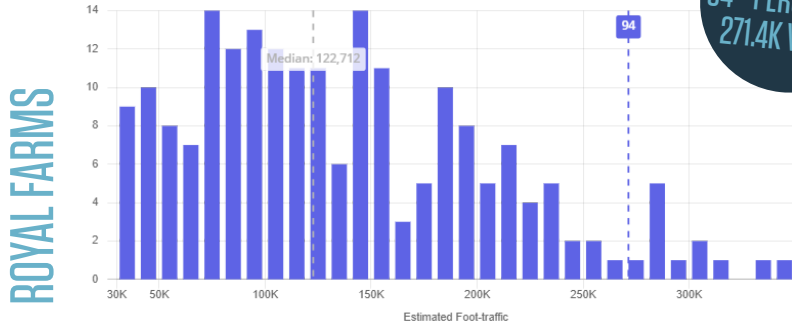
12 / 202 94% 8 / 128 94% 1 / 9 94%

[View List](#) [View List](#) [View List](#)

Benchmark with venues near: **Royal Farms**

Within: Chain: **Royal Far...** Region: **United Stat...**

Total venues: **202** Coverage: **88%**



United States Maryland Local: 15mi

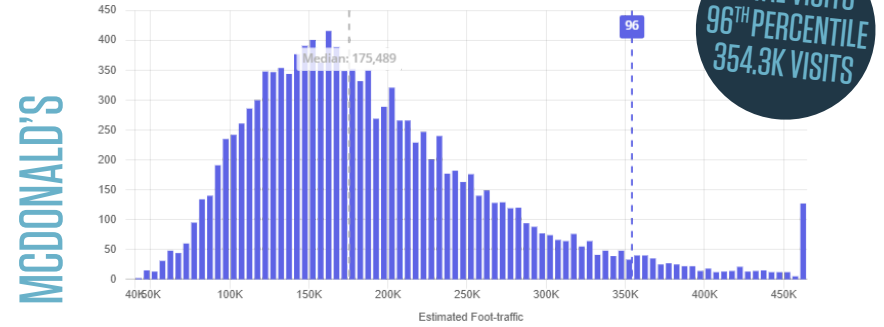
549 / 12,427 96% 11 / 252 96% 13 / 96 87%

[View List](#) [View List](#) [View List](#)

Benchmark with venues near: **McDonald's**

Within: Chain: **McDonal...** Region: **United Stat...**

Total venues: **12,427** Coverage: **93%**



United States Maryland Local: 15mi

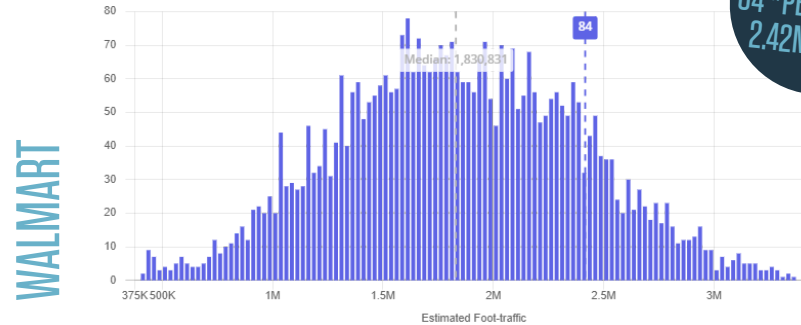
633 / 3,912 84% 10 / 47 80% 2 / 8 81%

[View List](#) [View List](#) [View List](#)

Benchmark with venues near: **Walmart**

Within: Chain: **Walmart** Region: **United States**

Total venues: **3,912** Coverage: **99%**



PLACER

JAN 1, 2019 - DEC 31, 2019 | DATA PROVIDED BY PLACER LABS INC. (WWW.PLACER.AI)

Joe Mekulski  
jmekulski@klnb.com  
443-632-1343

John Meyer  
jmeyer@klnb.com  
443-632-2052

Brian Finkelstein  
bfinkelstein@klnb.com  
443-632-2076

100 West Road, Suite 505  
Towson, MD 21204  
klnb.com

klnb



# CAPITAL PLAZA

6200 Annapolis Road, Landover Hills, MD 20784  
Prince George's County

CLICK TO VIEW PROPERTY WEBSITE

For More Information, Please Contact:

**Joe Mekulski**

[jmekulski@klnb.com](mailto:jmekulski@klnb.com)  
443-632-1343

**John Meyer**

[jmeyer@klnb.com](mailto:jmeyer@klnb.com)  
443-632-2052

**Brian Finkelstein**

[bfinkelstein@klnb.com](mailto:bfinkelstein@klnb.com)  
443-632-2076

100 West Road, Suite 505  
Towson, MD 21204

[klnb.com](http://klnb.com)

 [facebook.com/KLNB](https://facebook.com/KLNB)

 [@KLNBLLC](https://twitter.com/KLNBLLC)

 [linkedin.com/company/klnb](https://linkedin.com/company/klnb)

 [instagram.com/klnbllc](https://instagram.com/klnbllc)

While we have no reason to doubt the accuracy of any of the information supplied, we cannot, and do not, guarantee its accuracy. All information should be independently verified prior to a purchase or lease of the property. We are not responsible for errors, omissions, misuse, or misinterpretation of information contained herein and make no warranty of any kind, express or implied, with respect to the property or any other matters.

