

109 Wilson Avenue

Bushwick, Brooklyn

933.20 SF of Retail Space Available for Lease

Located On The Northeast Corner of Starr Street



SIZE

933.20 SF - Ground Floor
*Plus Basement

ASKING RENT

Upon Request

POSSESSION

Immediate

CURRENTLY

Vacant

FRONTAGE

32' Wraparound

CEILING HEIGHTS

9' 7" - Ground Floor

NEIGHBORS



Miles Cocktail Bar, Imbertenos Dry Cleaners, Achievement First University Prep HS, Alphaville, Central Café Brooklyn, Bushwick Bakery, Archie's Bar and Pizza

COMMENTS

- Contains built out bathroom and employee lounge/storage room
- Sprinkler system installed

- ADA Compliant entry ramp
- Located one block from Maria Hernandez Park
- Large sidewalk area, suitable for sidewalk seating for food use
- B60 bus stop on block, and a 7 minute walk to nearest subway at Central Ave (M train)
- Great for coffee shops, salons, delis, or other neighborhood services
- All uses considered
- Additional space available in the basement for storage

MASS TRANSPORTATION 2015 Ridership Report

Central Avenue	
Annual	1,141,731
Weekday	3,715
Weekend	3,596
B60 Bus	
Annual	3,107,982
Weekday	9,753
Weekend	11,936

Contact Our Exclusive Agents:

Mike Drummey

mdrummey@ripcony.com
646.827.9972

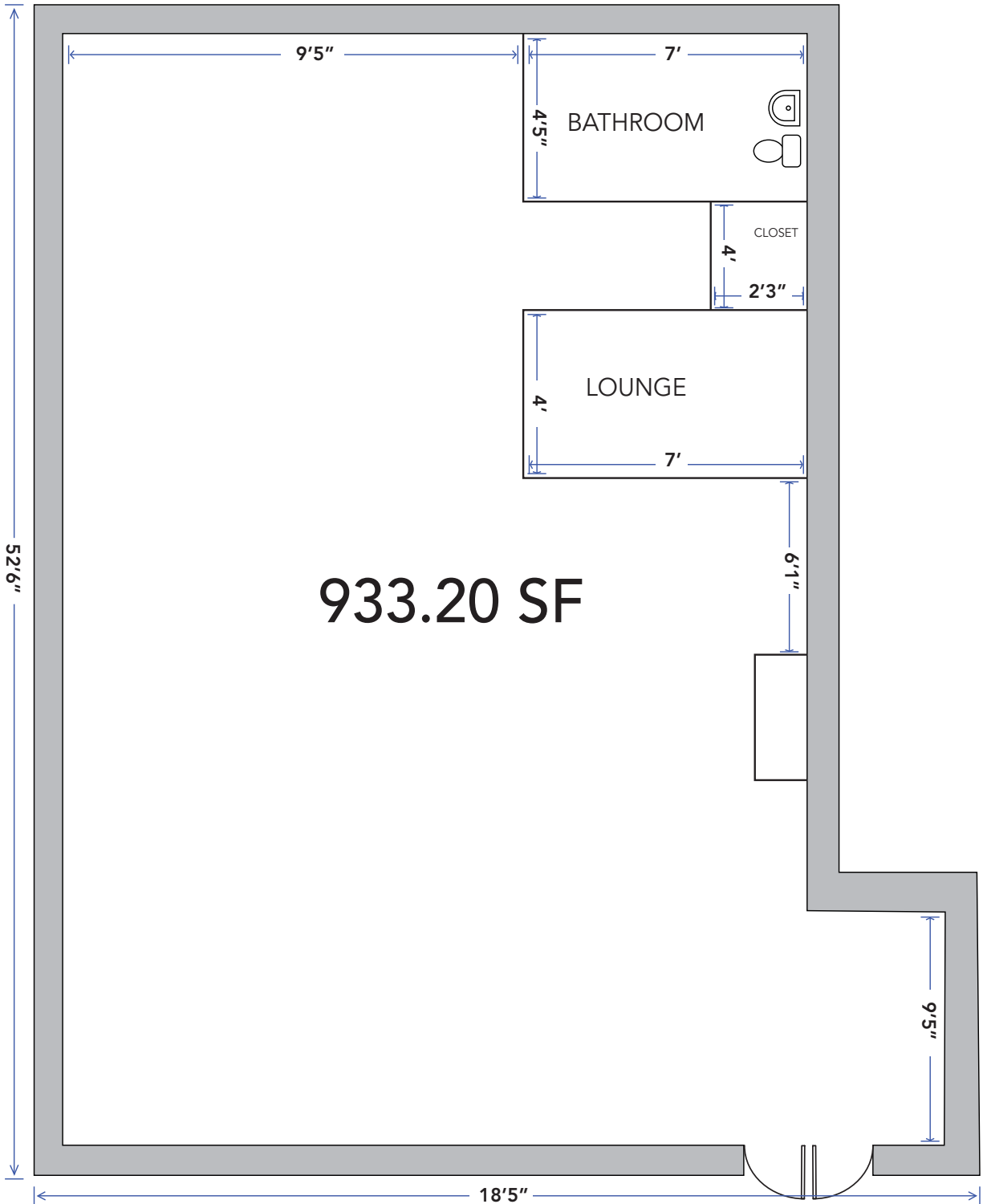
Andrew Clemens

aclemens@ripcony.com
212.750.6565



FLOOR PLANS

GROUND FLOOR



933.20 SF

WILSON AVENUE

MANHATTAN

150 East 58th Street
15th Floor
New York, NY 10155

T. 212.750.6565
F. 212.750.6767

LONG ISLAND

100 Jericho Quadrangle
Suite 120
Jericho, NY 11753

T. 516.933.8880
F. 516.933.2514

NEW JERSEY

125 Chubb Avenue
Suite B
Lyndhurst, NJ 07071

T. 201.777.2300
F. 201.777.2314

Proudly Serving:

Long Island
New Jersey
New York City
Westchester
Rockland
Connecticut

www.ripcony.com

*All information is from sources deemed reliable and is submitted subject to errors, omissions, change of price, terms, rental prior sale and withdrawal notices.