

DEFINITIONS

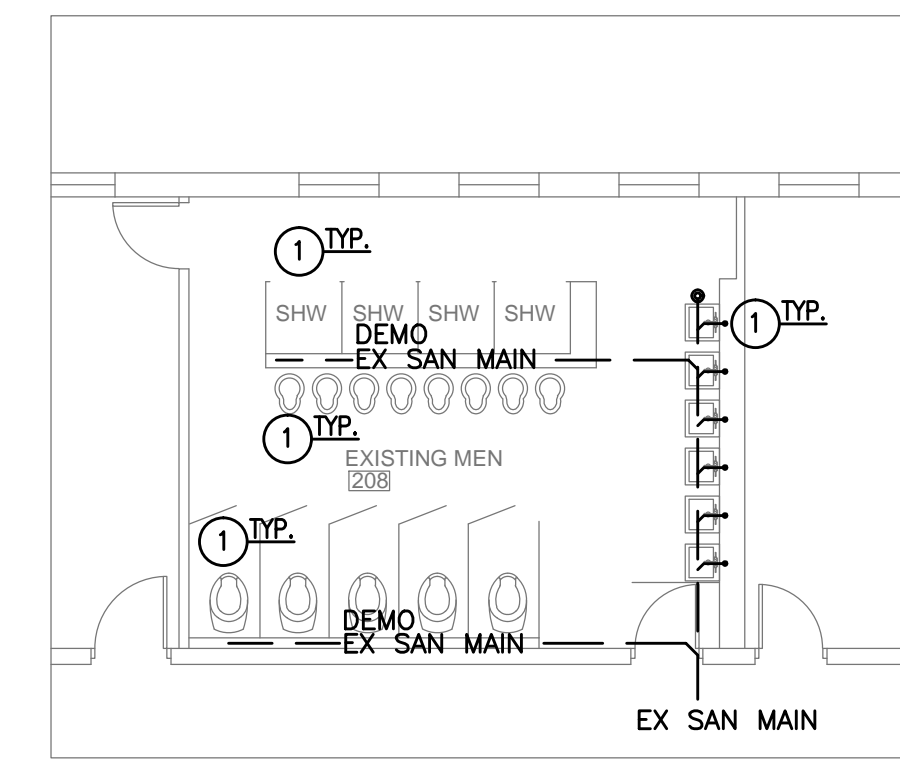
CTE - CONNECT TO EXISTING
AFF - ABOVE FINISHED FLOOR

GENERAL NOTES

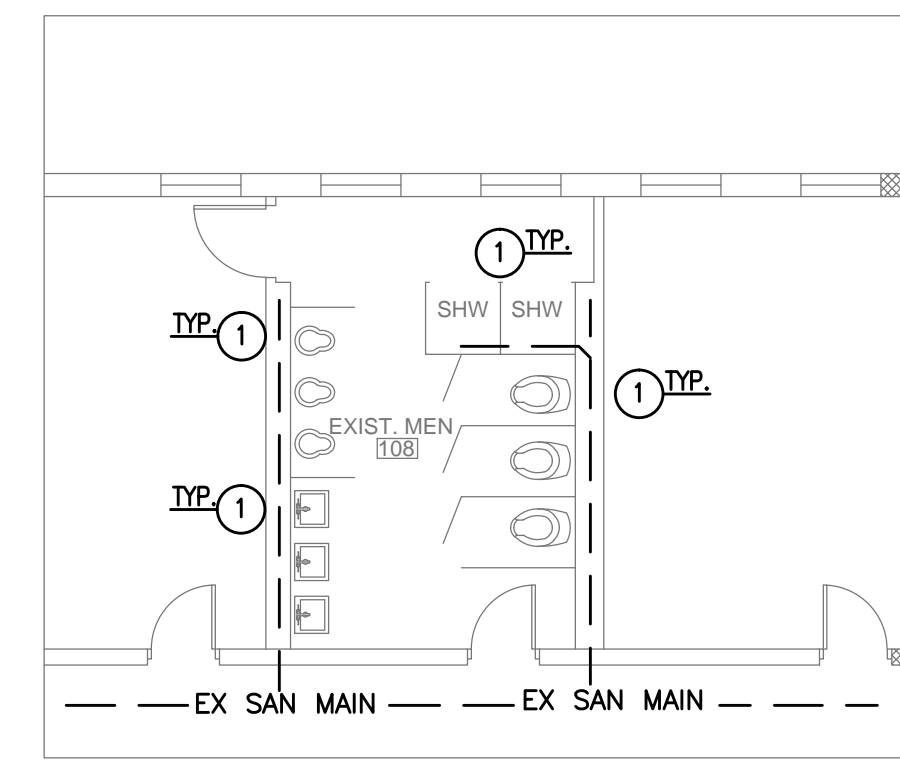
- CONDUCT FIELD SURVEY OF EXISTING CONDITIONS PRIOR TO SUBMISSION OF BID AND START OF WORK. NO ADDITIONAL PAYMENTS WILL BE MADE ON CLAIMS THAT ARISE FROM LACK OF KNOWLEDGE OF EXISTING CONDITIONS. DRAWINGS ARE SCHEMATIC IN NATURE. COORDINATE AS SOLE RESPONSIBILITY OF THIS CONTRACTOR ROUTINGS, HANGERS, INSULATION, VALVES AND STEMS, CONTROLS AND ALL PARTS OF SYSTEM WITH RESPECT TO BUILDING AND WORK OF OTHER TRADES.
- COORDINATE SCHEDULE OF WORK REQUIRED IN OCCUPIED AND OPERATING AREAS WITH OWNER PRIOR TO STARTING SUCH WORK.
- SCHEDULE UTILITY SERVICE SHUTDOWNS REQUIRED FOR NEW CONSTRUCTION WITH OWNER AND GENERAL TRADES PRIOR TO SHUTTING DOWN SYSTEMS. GIVE ONE WEEK ADVANCE NOTICE IN WRITING.
- REMOVE AND REPLACE EXISTING CEILINGS TO ACCOMMODATE NEW WORK. REPLACE DAMAGED CEILING TILES WITH NEW.
- CUT FLOOR, WALL, AND CEILING CONSTRUCTION FOR PENETRATIONS TO ACCOMMODATE NEW WORK. COORDINATE WITH GENERAL TRADES. PATCH CONSTRUCTION TO MATCH, OR TO SATISFACTION OF ARCHITECT AND OWNER.
- COORDINATE ROUTING OF NEW DUCTWORK AND PIPING WITH EXISTING BUILDING CONDITIONS AND WITH WORK OF OTHER TRADES. PROVIDE CHANGES IN LOCATION, DIRECTION, OFFSETS, AS MAY BE REQUIRED, WHETHER SPECIFICALLY INDICATED OR NOT, AND AT NO ADDITIONAL COST TO THE OWNER.
- COORDINATE AIR DISTRIBUTION DEVICE LOCATIONS WITH FINAL REFLECTED CEILING PLAN.
- UNLESS OTHERWISE NOTED, FLEXIBLE DUCTWORK IS SAME SIZE AS ROUND DUCTWORK TO WHICH IT IS CONNECTED. FLEXIBLE DUCTWORK TO BE LIMITED TO MAXIMUM 10 FEET AND HUNG STRAIGHT WITHOUT KINKS OR SHARP BENDS
- THE DUCTWORK SIZES INDICATED ARE INSIDE CLEAR DIMENSIONS. PROVIDE BALANCING DAMPER AT ALL BRANCH TAKE OFFS FROM MAIN TRUNK DUCT AND AT TAKE OFFS SERVING DIFFUSER, GRILLE, OR REGISTER.
- NOTE PIPING TO BE RUN IN FLOOR, SANITARY PIPING SHOWN SIZED PER OPC FOR 1/8" DROP PER FOOT. PROVIDE 1/4" DROP PER FOOT WHERE AVAILABLE.
- RE-USE EXISTING PIPING, INSULATION AND DUCTWORK AS POSSIBLE. VERIFY CONDITION, FREE AREA, AND INSULATION IS EQUAL OR GREATER THAN THAT LISTED IN PLANS.

PLAN NOTES

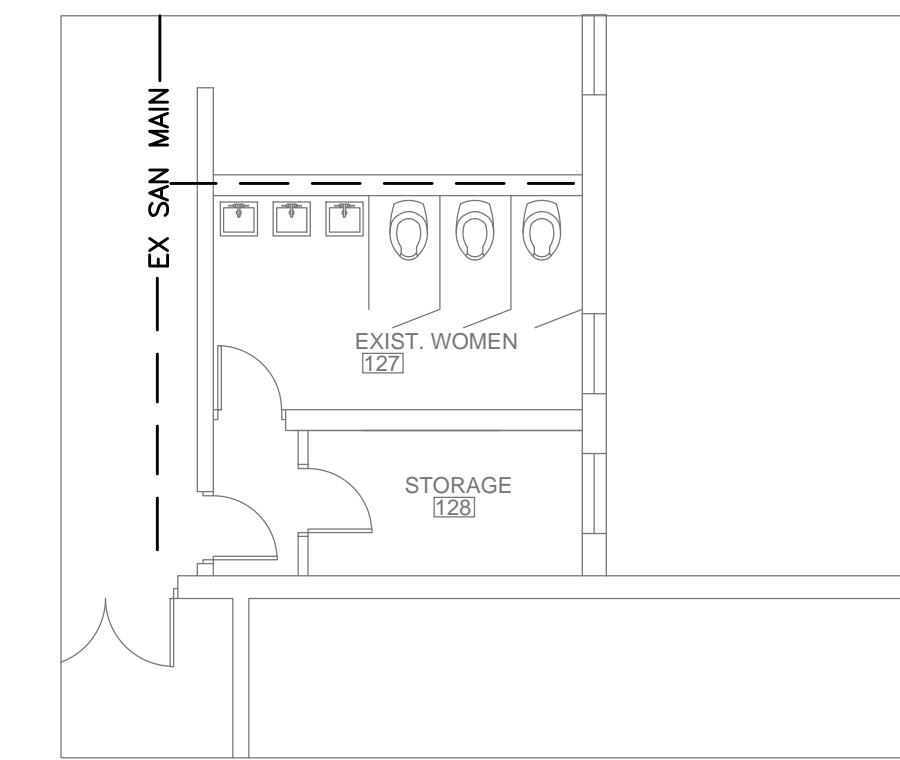
- REMOVE EXISTING PLUMBING FIXTURE, PIPING, HANGER AND ACCESSORIES. REMOVE PIPING BACK TO MAIN AND CAP. PREPARE PIPES FOR CONNECTION TO NEW FIXTURES.
- PROVIDE AND INSTALL NEW FIXTURE. EXTEND NEW HOT/COLD WATER, SANITARY AND VENT PIPING TO EXISTING MAINS. PROVIDE SHUTOFF VALVES, ACCESSORIES, AND CARRIERS FOR A COMPLETE SYSTEM. PROVIDE TRAP PRIMER ON ALL FLOOR DRAINS.
- PROVIDE AND INSTALL NEW CEILING MOUNTED EXHAUST FAN. CONNECT TO EXISTING EXHAUST CONNECTIONS ***ALTERNATE*** PROVIDE PIPING TO EXTEND EXHAUST (4") THRU EXTERIOR WALL OR ROOF AND TERMINATE WITH ROOF/WALL JACK. COORDINATE FINAL LOCATION WITH RESPECT TO FINAL CEILING PLAN, OWNER REQUIREMENTS. COORDINATE CONNECTIONS AND SWITCHING WITH ELECTRICAL CONTRACTOR.
- PROVIDE CAPPED 1/2" DCW WITH BACKFLOW PREVENTER FOR FUTURE REFRIGERATOR ICE MAKER.



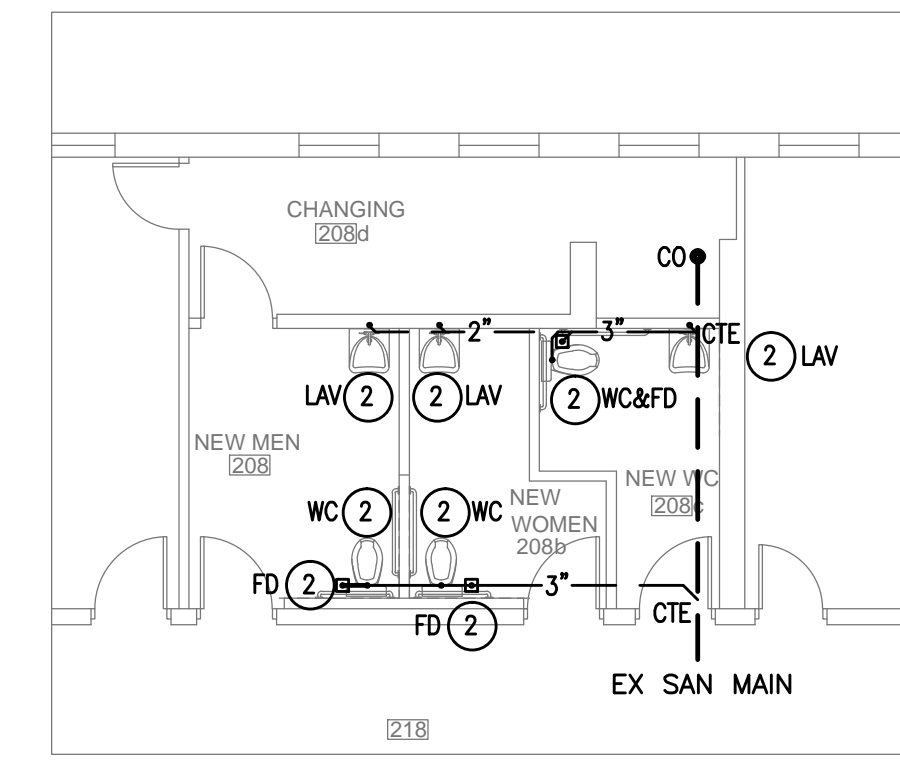
EXISTING PARTIAL 2ND FLOOR PLAN
1/8" = 1'-0"



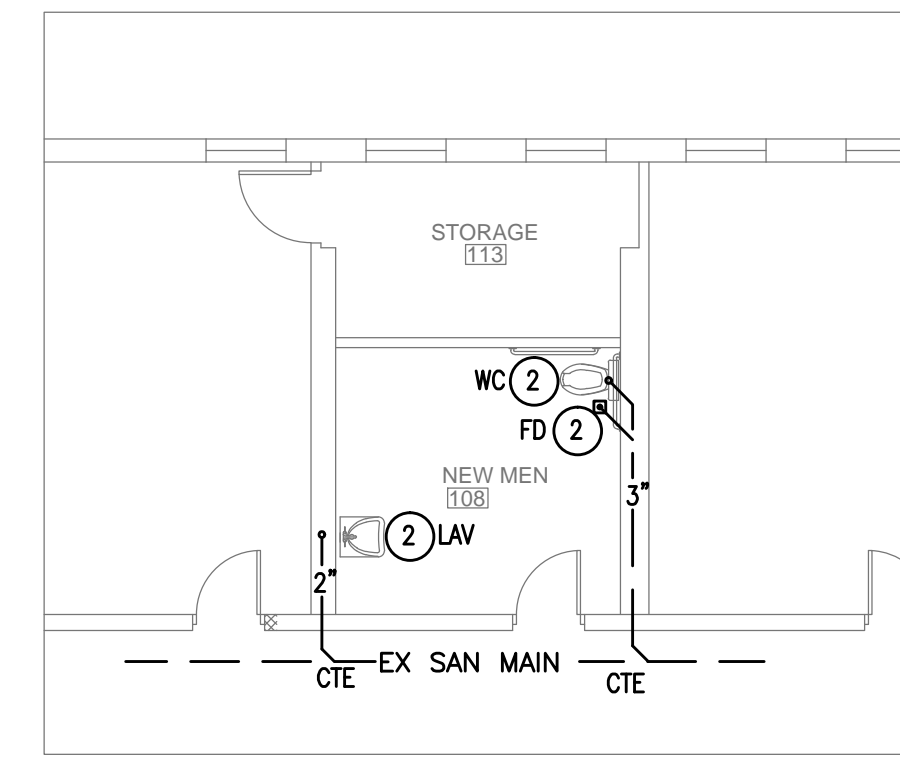
EXISTING PARTIAL 1ST FLOOR PLAN NORTH
1/8" = 1'-0"



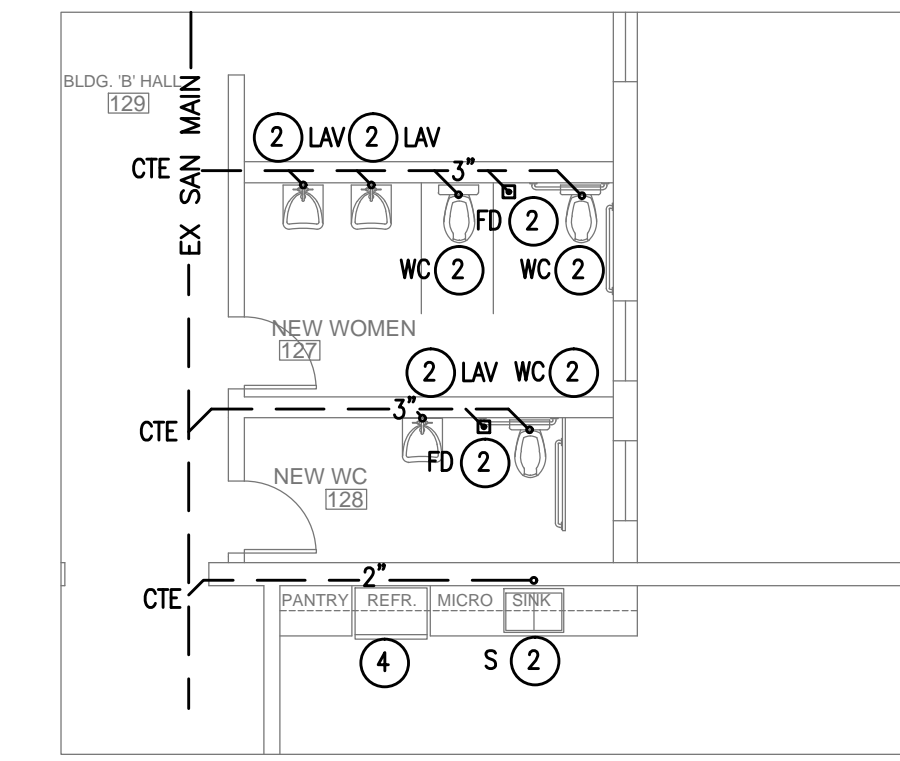
EXISTING PARTIAL 1ST FLOOR PLAN SOUTH
1/8" = 1'-0"



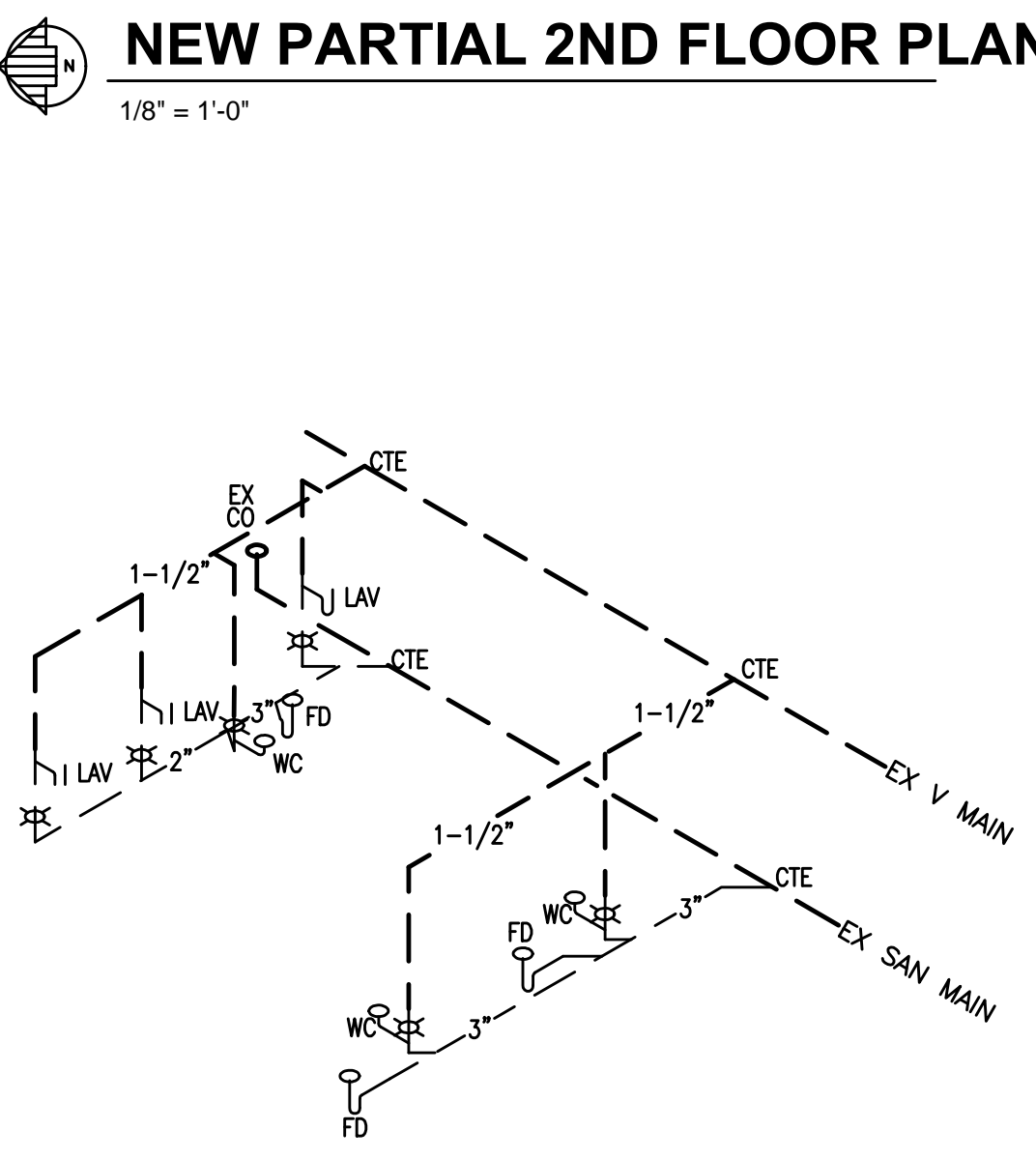
NEW PARTIAL 2ND FLOOR PLAN
1/8" = 1'-0"



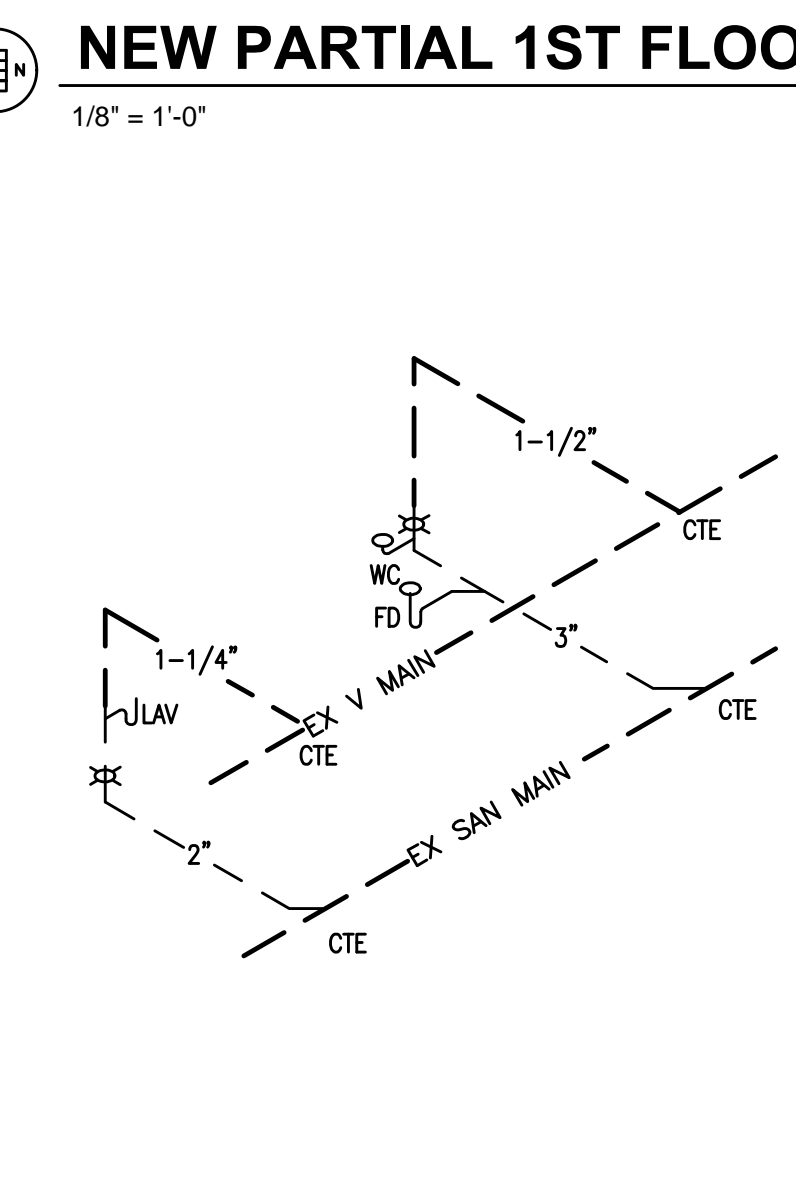
NEW PARTIAL 1ST FLOOR PLAN NORTH
1/8" = 1'-0"



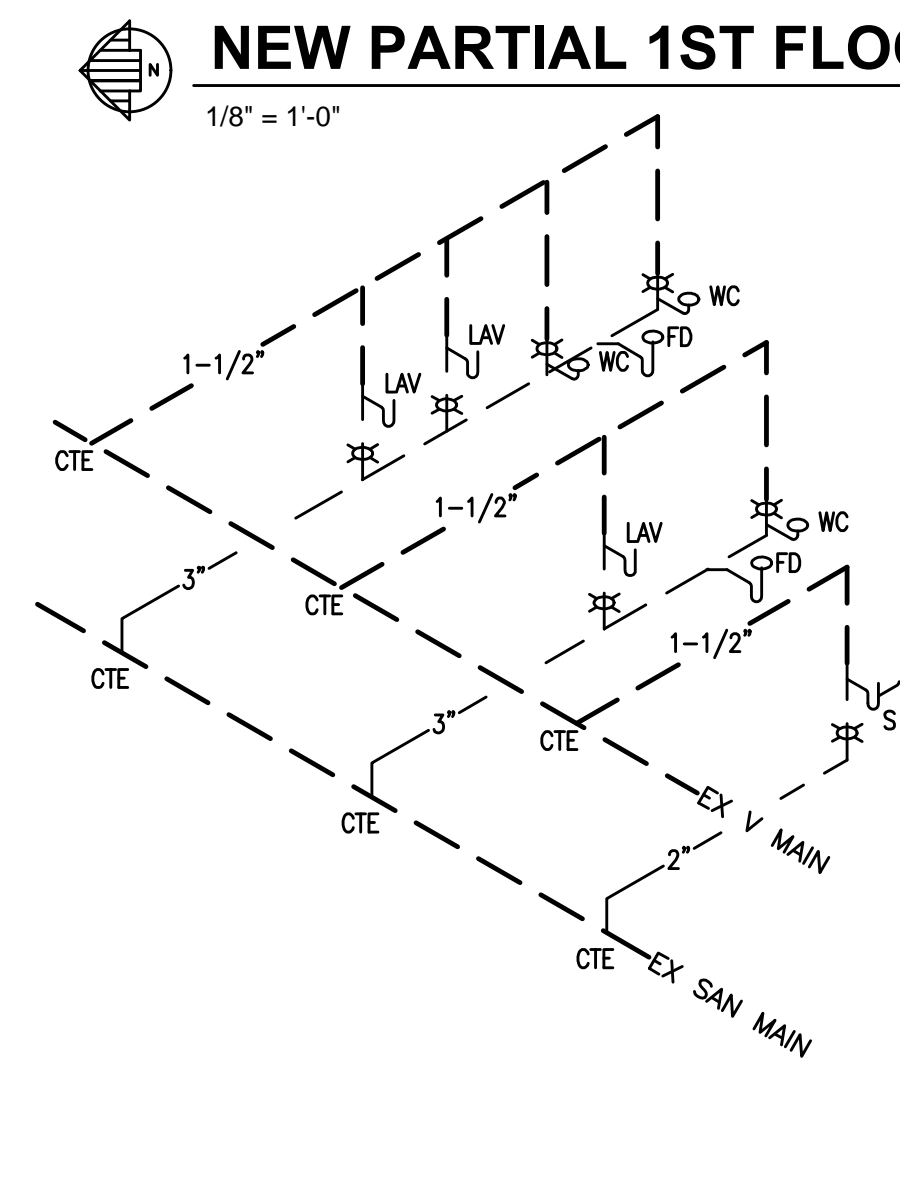
NEW PARTIAL 1ST FLOOR PLAN SOUTH
1/8" = 1'-0"



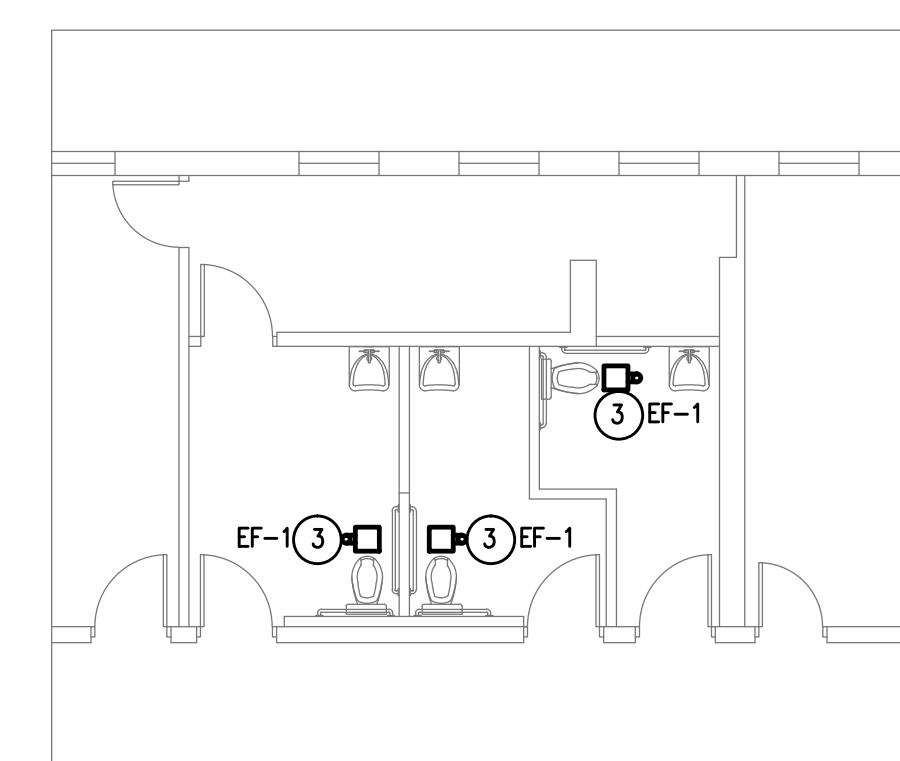
PARTIAL 2ND FLOOR ISOMETRIC
NO SCALE



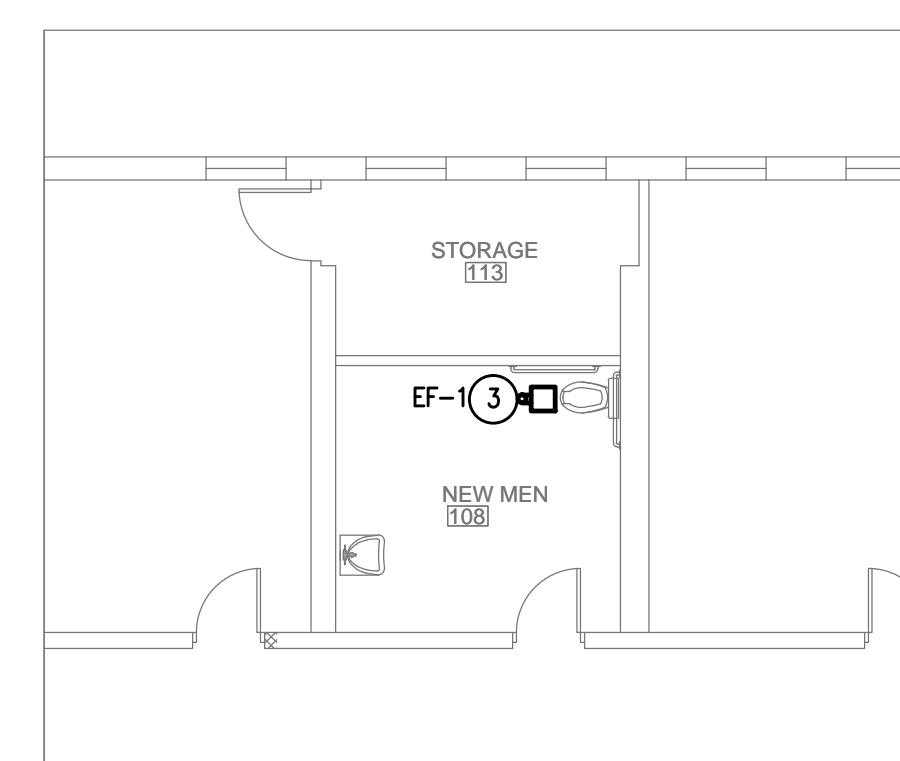
PARTIAL 1ST FLOOR NORTH ISOMETRIC
NO SCALE



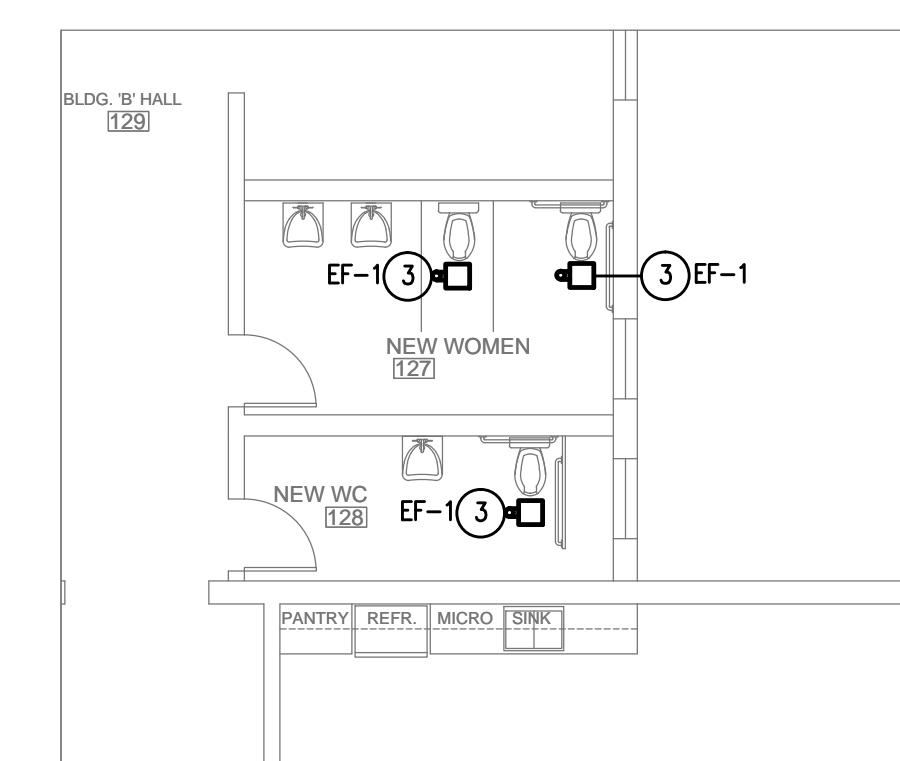
PARTIAL 1ST FLOOR SOUTH ISOMETRIC
NO SCALE



NEW PARTIAL 2ND HVAC PLAN
1/8" = 1'-0"



NEW PARTIAL 1ST FLOOR PLAN NORTH
1/8" = 1'-0"



NEW PARTIAL 1ST FLOOR PLAN SOUTH
1/8" = 1'-0"

FAN SCHEDULE					
MARK	MODEL	MFG.	AIRFLOW	E.S.P.	VOLTAGE-PH POWER
EF-1	GC-144	COOK	75	0.3 INCH	115V-1PH 76 WATT

FIXTURE CONNECTION SCHEDULE					
MARK	FIXTURE	SAN	VENT	105 DHW	DCW
WC	FLR. MTD. TANK WC	3"	1-1/2"	--	1/2"
S	CABINET MTD. SINK	1-1/2" (2)	1-1/2"	1/2"	1/2"
LAV	LAVATORY	1-1/2"	1-1/4"	1/2"	1/2"
FD	SQUARE FLOOR DRAIN	3"	CWV	--	--
TP-1	TRAP PRIMER (FIXTURE DOWNSTREAM)	--	--	--	1/2"

ISSUE / REVISIONS
12-17-15 FOR PERMIT

PROJECT NUMBER
2815

M-1

