

AVAILABLE - FREESTANDING BUILDING

1112 Charles St. (Route 246)
North Providence, RI



LOCATION: This site is ideally located just off of Rte. 146 near the busy signalized intersection of Mineral Spring Avenue (Rte. 15) and Charles Street (Rte. 246). The site has direct access to Rte. 146 on-ramps and services both North Providence and Lincoln, Rhode Island. (Map 23D Lot 996)

LAND AREA: Approximately 15,000 square feet

BUILDING: 2,880 square feet with an additional 2,880 square feet in the basement

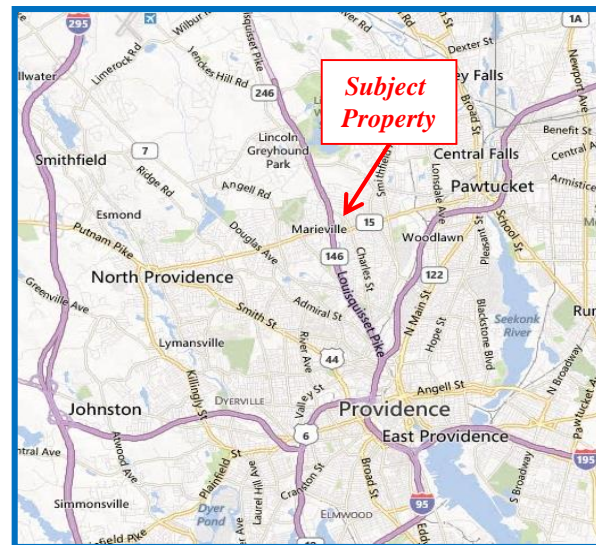
PARKING: Approximately 30 cars in common

LOADING: Loading Dock servicing main level
Drive-In door servicing basement

ZONING: Village Commercial

RENTAL RATE: \$3,250/month – Modified Gross

SALE PRICE: \$295,000 Taxes: \$9,856 - 2016



FOR MORE INFORMATION CONTACT:

Daniel Feiner and Joseph Mardo, CLS

dfeiner@TheDiscoveryGroupInc.com ~ jmardo@TheDiscoveryGroupInc.com
101 Plain Street, 1st Floor Suite 100, Providence, Rhode Island 02903
(401)729-8000 phone ~ (401)729-4300 fax ~ www.TheDiscoveryGroupInc.com

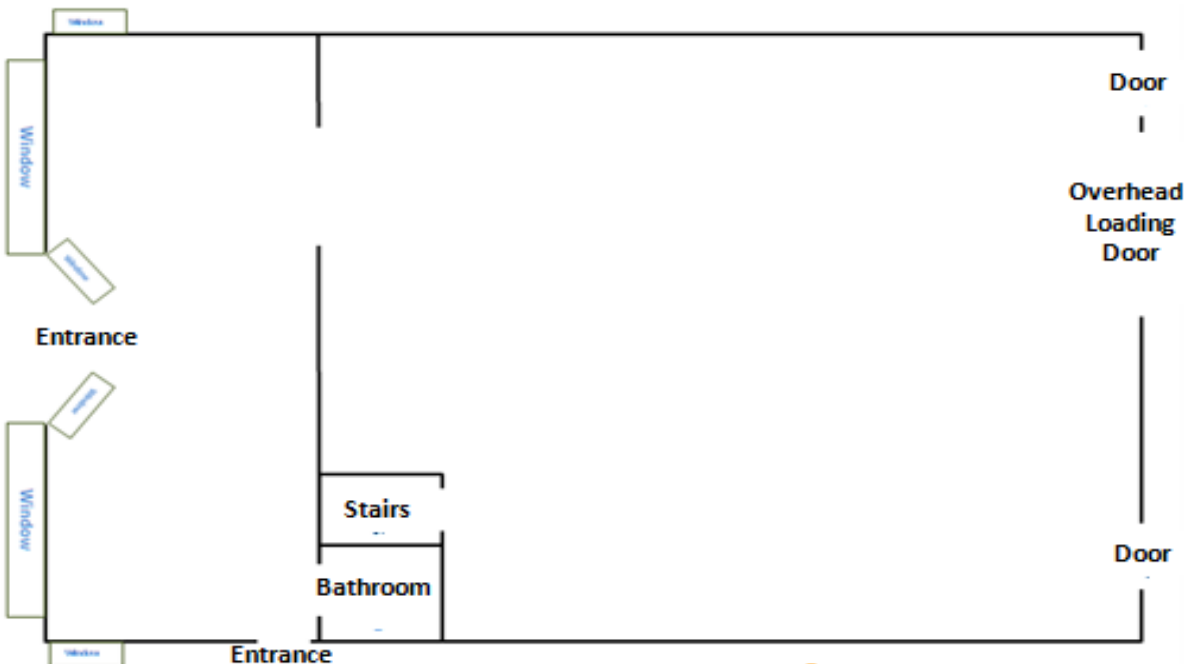
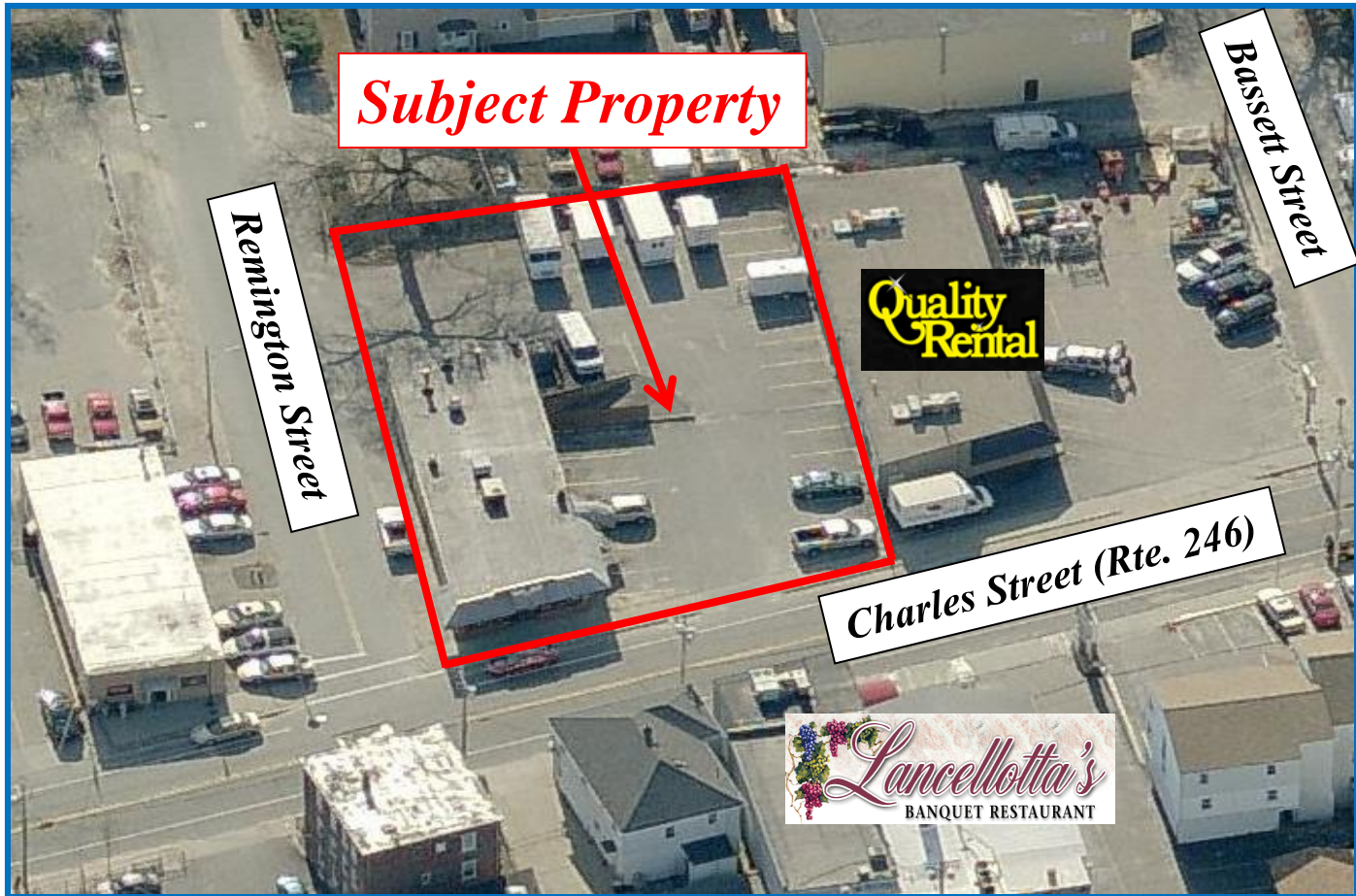


THE DISCOVERY GROUP, INC.

UNLOCKING OPPORTUNITIES
ONE INVESTMENT AT A TIME

FREESTANDING BUILDING

1112 Charles Street (Route 246)
North Providence, Rhode Island



The information contained herein is for informational purposes only and no representations, warranties and/or guarantees are being made as to the current or future conditions of the above property. Current conditions must be independently confirmed. All information is subject to change and verification and no liability for errors or omissions is assumed.

THE DISCOVERY GROUP, INC.
UNLOCKING OPPORTUNITIES
ONE INVESTMENT AT A TIME