

GRANNY ROAD

DISTRICT 200, SECTION 574
BLOCK 2, LOT 17.1
LANDS N/F OF
CHEYENNE PROPERTIES, LLC
LIBER 12126, PG. 94

DISTRICT 200, SECTION 574
BLOCK 2, LOT 3.1
LANDS N/F OF
709 CEDARHURST REALTY LLC
LIBER 12636, PG. 906

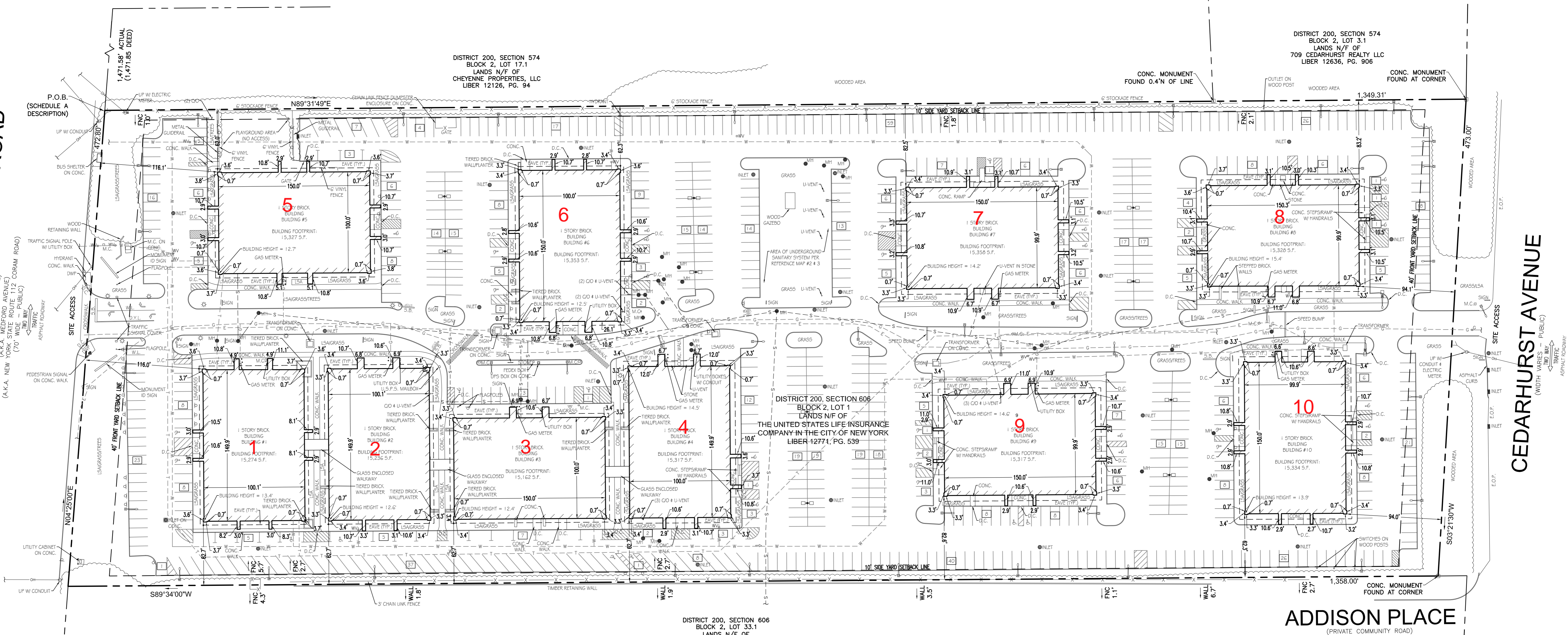
DISTRICT 200, SECTION 606
BLOCK 2, LOT 1
LANDS N/F OF
THE UNITED STATES LIFE INSURANCE
COMPANY IN THE CITY OF NEW YORK
LIBER 12771, PG. 539

DISTRICT 200, SECTION 606
BLOCK 2, LOT 33.1
LANDS N/F OF
MEDFORD LANDING II, L.P.

ADDISON PLACE
(PRIVATE COMMUNITY ROAD)

PATCHOGUE - PORT JEFFERSON ROAD
(A.K.A. STATE ROUTE 112)
(A.K.A. MEDFORD AVENUE)
(A.K.A. NEW YORK STATE ROUTE 112 CORAM ROAD)
(70' WIDE - PUBLIC)

CEDARHURST AVENUE
(WIDTH VARIES - PUBLIC)
(TWO WAY TRAFFIC)



1,471.58' ACTUAL
(1,471.85 DEED)

CONC. MONUMENT
FOUND 0.4' N OF LINE

CONC. MONUMENT
FOUND AT CORNER

CONC. MONUMENT
FOUND AT CORNER

S89°34'00"W

FNC 4.3

FNC 2.7

FNC 5.7

FNC 2.7

FNC 4.3

FNC 2.7

FNC 5.7

FNC 2.7

FNC 4.3

FNC 2.7

FNC 5.7

FNC 2.7

FNC 4.3

FNC 2.7

FNC 5.7

FNC 2.7

FNC 4.3

FNC 2.7

FNC 5.7

FNC 2.7

FNC 4.3

FNC 2.7

FNC 5.7

FNC 2.7

FNC 4.3

FNC 2.7

FNC 5.7

FNC 2.7

FNC 4.3

FNC 2.7

FNC 5.7

FNC 2.7

FNC 4.3

NO4°25'00"E

FNC 5.7

FNC 2.7

FNC 4.3

FNC 5.7

FNC 2.7

FNC 4.3

FNC 5.7

FNC 2.7

FNC 4.3

FNC 5.7

FNC 2.7

FNC 4.3

FNC 5.7

FNC 2.7

FNC 4.3

FNC 5.7

FNC 2.7

FNC 4.3

FNC 5.7

FNC 2.7

FNC 4.3

FNC 5.7

FNC 2.7

FNC 4.3

FNC 5.7

FNC 2.7

FNC 4.3

FNC 5.7

FNC 2.7

FNC 4.3

FNC 5.7

FNC 2.7

FNC 4.3

FNC 5.7

FNC 2.7

N89°31'49"E

FNC 1.0

FNC 1.8

FNC 2.1

FNC 1.8

FNC 1.0

FNC 1.8

FNC 2.1

FNC 1.8

FNC 1.0

FNC 1.8

FNC 2.1

FNC 1.8

FNC 1.0

FNC 1.8

FNC 2.1

FNC 1.8

FNC 1.0

FNC 1.8

FNC 2.1

FNC 1.8

FNC 1.0

FNC 1.8

FNC 2.1

FNC 1.8

FNC 1.0

FNC 1.8

FNC 2.1

FNC 1.8

FNC 1.0

FNC 1.8

FNC 2.1

FNC 1.8

FNC 1.0

FNC 1.8

FNC 2.1

1,471.58' ACTUAL
(1,471.85 DEED)

CONC. MONUMENT
FOUND 0.4' N OF LINE

CONC. MONUMENT
FOUND AT CORNER

CONC. MONUMENT
FOUND AT CORNER

S89°34'00"W

FNC 4.3

FNC 2.7

FNC 5.7

FNC 2.7

FNC 4.3

FNC 2.7

FNC 5.7

FNC 2.7

FNC 4.3

FNC 5.7

FNC 2.7

FNC 4.3

FNC 5.7

FNC 2.7

FNC 4.3

FNC 5.7

FNC 2.7

FNC 4.3

FNC 5.7

FNC 2.7

FNC 4.3

FNC 5.7

FNC 2.7

FNC 4.3

FNC 5.7

FNC 2.7

FNC 4.3

FNC 5.7

FNC 2.7

FNC 4.3

FNC 5.7

FNC 2.7

FNC 4.3