

Industrial ★ SALE

LanCarte.com

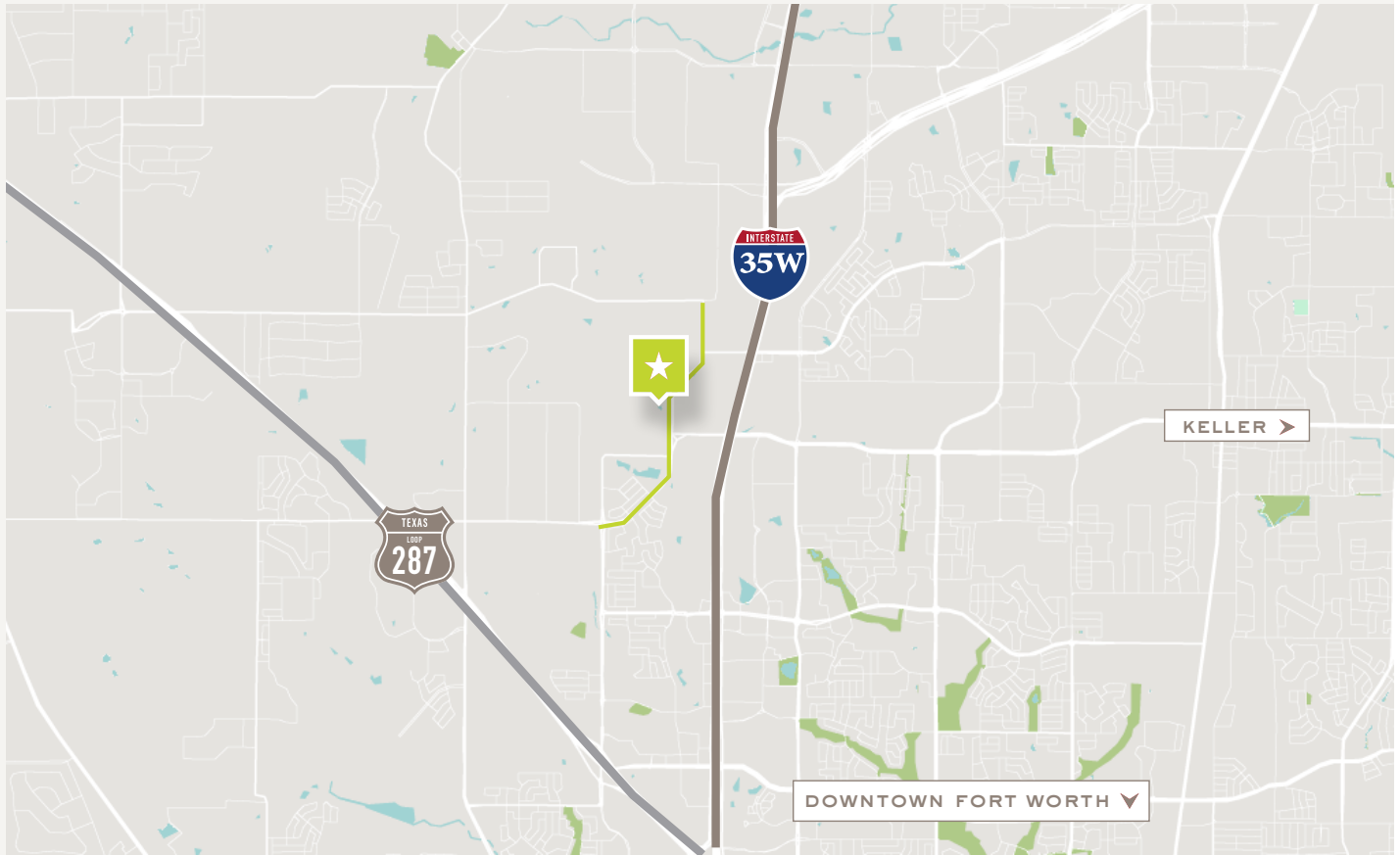
13009 HARMON RD, FORT WORTH, TX 76177



Industrial ★ SALE

13009 HARMON RD

LanCarte.com



PROPERTY FEATURES

- 11,970 SF
- Suite Spaces: 2,394-11,970 SF
- Grade Level Loading
- 5 Grade Level Doors
- Metal construction with insulated roof
- 100% HVAC
- 20' Clear Height
- Skylights Available
- ETJ Zoning

LEASE RATE & STRUCTURE

CONTACT BROKER

LOCATION OVERVIEW

Located directly off I-35W. This property is in North East Tarrant/Alliance submarket. It provides easy accessibility to the DFW metroplex.

AVAILABLE SUITES

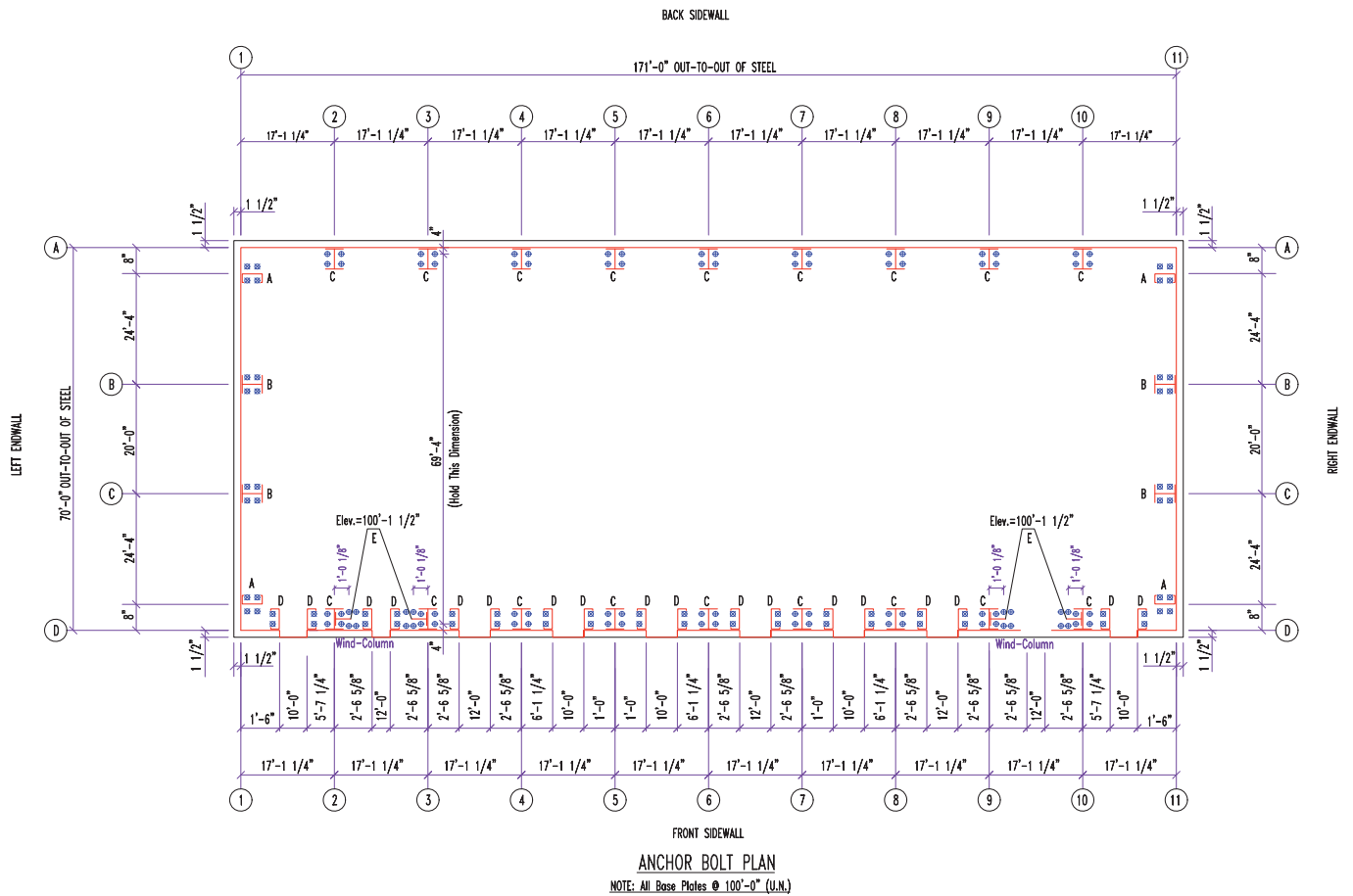
SUITE 1501 **2,394** SF

SUITE 1503, 1505, 1507 **7,182** SF

SUITE 1509 **2,394** SF

ALL AVAILABLE SUITES **11,970** SF

ANCHOR BOLT PLAN



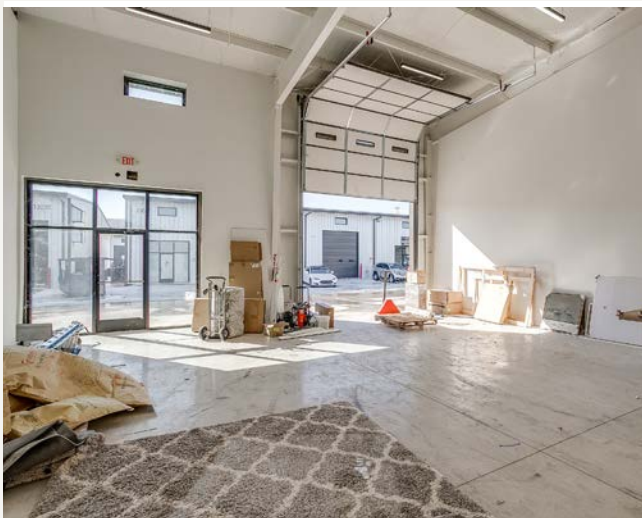
FOR PERMITTING
NOT FOR CONSTRUCTION



DESCRIPTION:		ANCHOR BOLT PLAN	
CUSTOMER:	Mike Corler	PROJECT:	Harm
LOCATION:	Fort Worth, TX 76120		
DRN. BY:	MJP	DATE:	7/20/23
SCALE:	N.T.S.	REV.	00
QUOTATION NO.:	4880		

Industrial ★ SALE
13009 HARMON RD

LanCarte.com





LANCARTE

COMMERCIAL

BROKERAGE ★ PROPERTY MANAGEMENT

Relentlessly Pursuing What Matters

Nick Talley

817-907-0327 | ntalley@lancarte.com

The information provided herein was obtained from sources believed to be reliable. However, LanCarte Commercial makes no guaranties, warranties or representations as to the completeness or accuracy thereof. The presentation of this property is submitted subject to errors, omissions, change of price or conditions, prior to sale or lease, or withdrawal without notice. Copyright 2026 LanCarte Commercial Real Estate, LLC.