

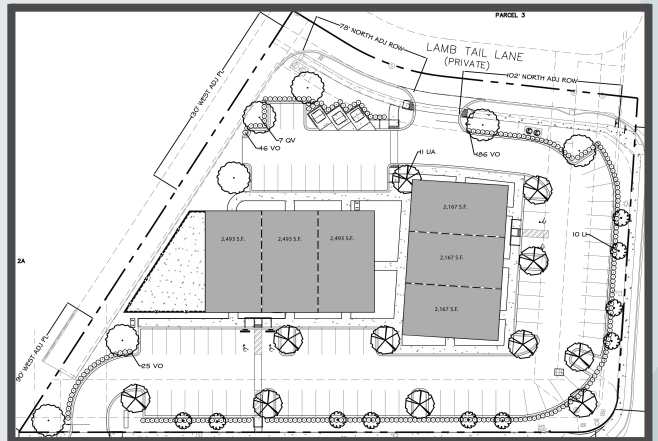


Office/Medical Space For Lease

Commons Park
9084 R. G. Skinner Parkway
Jacksonville, Florida 32256



- Lease Rate: \$32.00 NNN
- Parking Ratio: 5.65/1,000 s.f.
- Building A: 2,493 s.f. - 7,480 s.f.
- Building B: 2,167 s.f. - 6,500 s.f.





www.meekcompanies.com

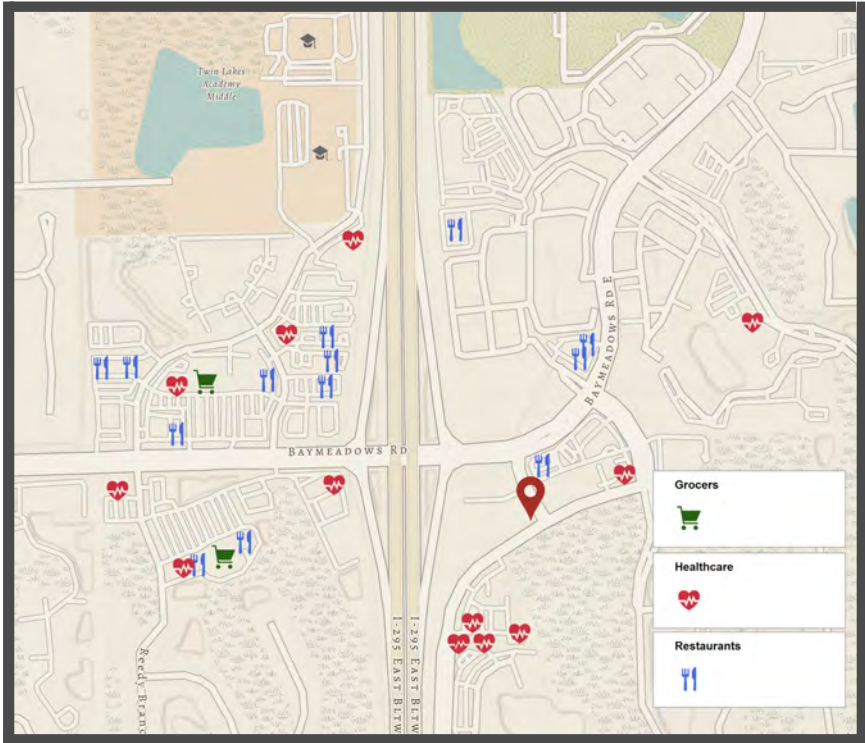


The Meek Companies
M. Craig Meek, Licensed Real Estate Broker

904-396-9930

This information has been obtained from sources believed reliable, but has not been verified for accuracy or completeness. Any projections, opinions, or estimates are subject to uncertainty. The information may not represent the current or future performance of the property. You and your advisors should conduct a careful, independent investigation of the property and verify all information. Any reliance on this information is solely at your own risk.





Commons Park is situated on R.G. Skinner Parkway, near the intersection of I-295 and Baymeadows Road, in the heart of the thriving eastern Baymeadows Road corridor. Located within minutes of many of Jacksonville's premier residential neighborhoods, including Deerwood and the rapidly expanding eTown, tenants within the park stand to benefit from 2.21% projected annual population growth over the next five years.

Easy access to and from I-295 allows for short drive times from locations throughout Jacksonville's Southside and Beaches neighborhoods, in addition to many prominent locations around town.

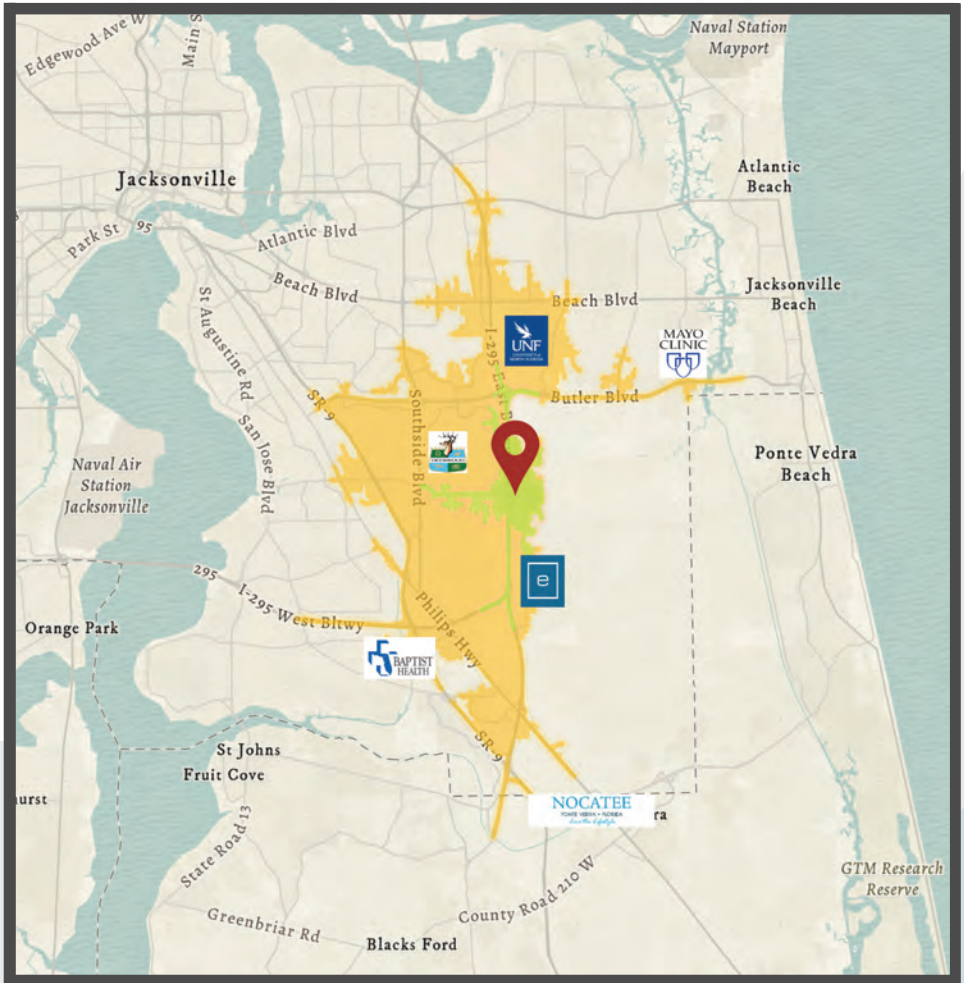
www.meekcompanies.com



The Meek Companies
M. Craig Meek, Licensed Real Estate Broker

904-396-9930

This information has been obtained from sources believed reliable, but has not been verified for accuracy or completeness. Any projections, opinions, or estimates are subject to uncertainty. The information may not represent the current or future performance of the property. You and your advisors should conduct a careful, independent investigation of the property and verify all information. Any reliance on this information is solely at your own risk.



Five Minutes Drive Time:

- eTown
- University of North Florida
- Atlantic Coast High School
- Twin Lakes Academy
- Deerwood

Ten Minutes Drive Time:

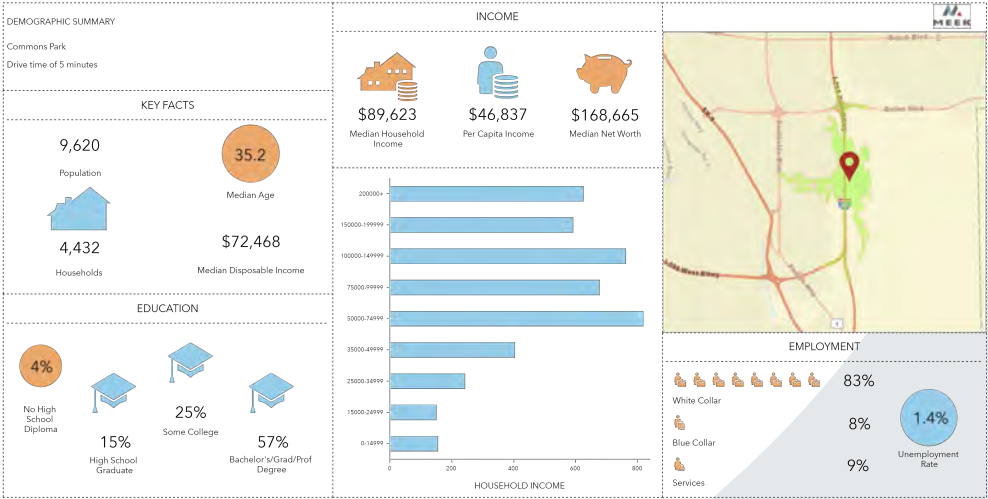
- St. Johns Towncenter
- Nocatee
- Durbin Crossing
- Baptist South
- Mayo Clinic

www.meekcompanies.com



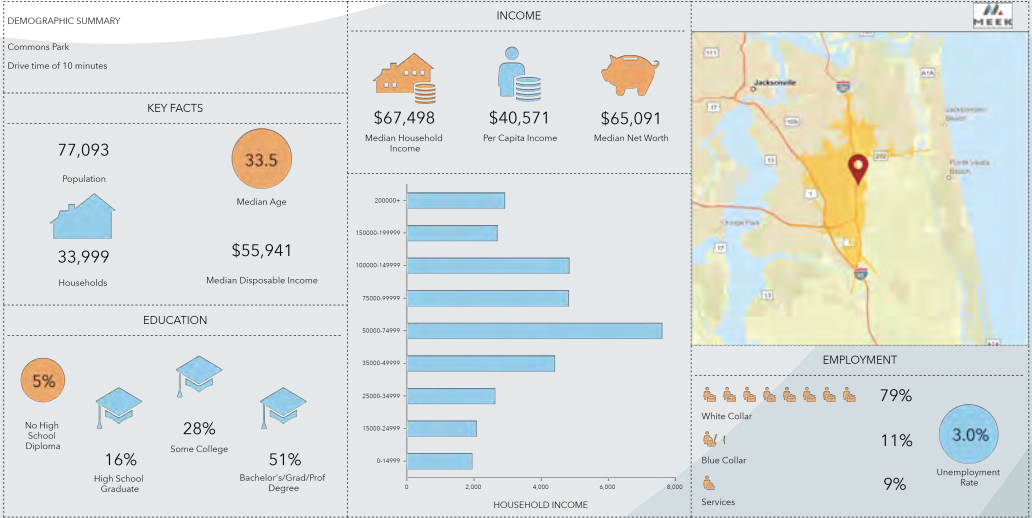
The Meek Companies
M. Craig Meek, Licensed Real Estate Broker

904-396-9930



This infographic contains data provided by Esri. The vintage of the data is 2020, 2025.

© 2021 Esri



This infographic contains data provided by Esri. The vintage of the data is 2020, 2025.

© 2021 Esri