



# BUILT **FIDI** RESTAURANT WITH ROOFTOP

100 BROAD AT BRIDGE & PEARL STREETS



# SPECIFICATIONS

## APPROXIMATE SIZE

Ground Floor	1,000 SF
Second Floor	7,208 SF
Rooftop Dining Area	6,940 SF

## FRONTAGE

Ground Floor	30 FT on Bridge Street
Second Floor & Rooftop	396 FT wraparound

## CEILING HEIGHTS

Ground Floor	15 FT
Second Floor	18 FT

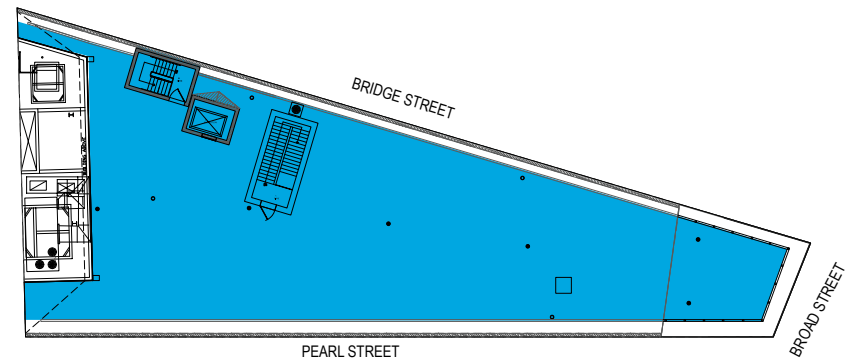
## COMMENTS

Previously occupied by Ampia, featuring a dedicated entrance from Bridge Street connected by a private elevator and staircase

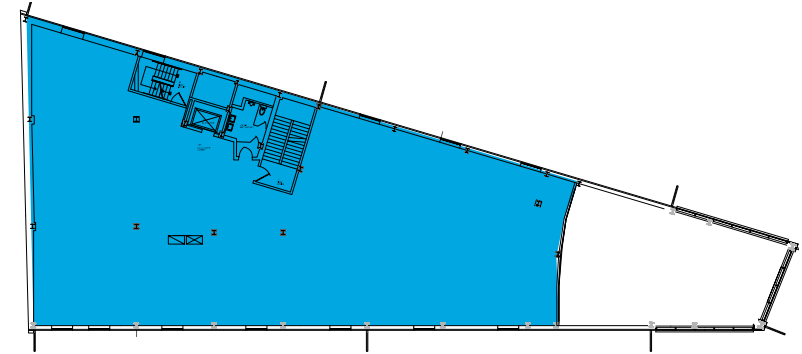
Rare rooftop availability

Unlimited signage potential

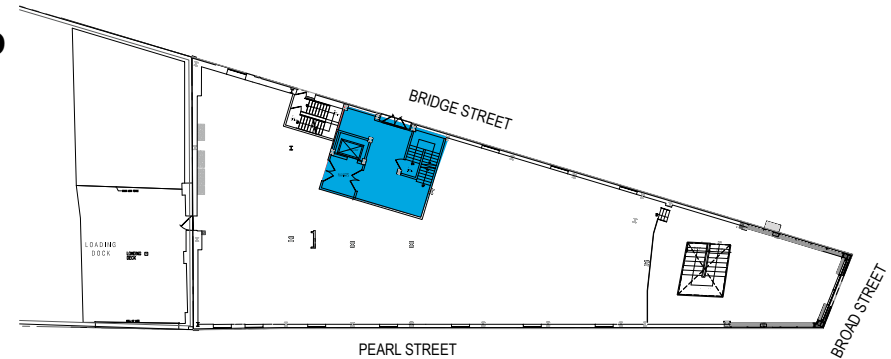
## ROOFTOP



## SECOND FLOOR



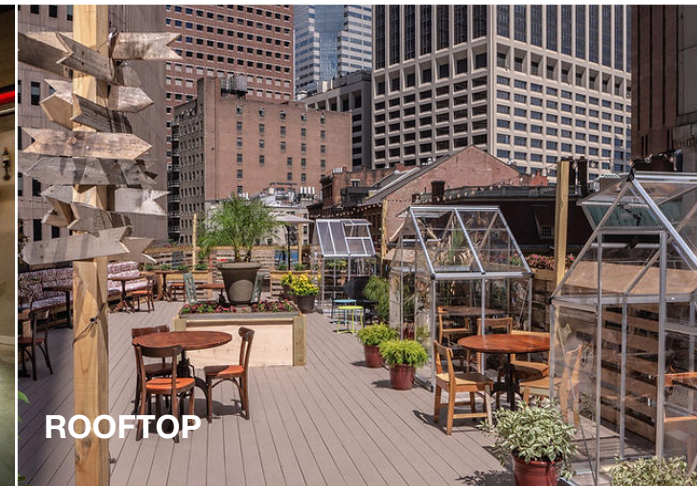
## GROUND FLOOR



SECOND FLOOR



SECOND FLOOR



ROOFTOP



ROOFTOP

## FIDI STATS

**62K** Area Residents

**127M** Annual Transit Riders

**260K** Daily Office Workers

**9K+** Hotel Rooms

### CONTACTS

Jeffrey D. Roseman 212.372.2430  
jeffrey.roseman@nrmk.com

Marc Frankel 212.372.2240  
marc.frankel@nrmk.com

Drew Weiss 212.372.2473  
drew.weiss@nrmk.com



# NEWMARK