

FOR SALE: OFFICE/RETAIL BUILDING

Ishpeming, MI

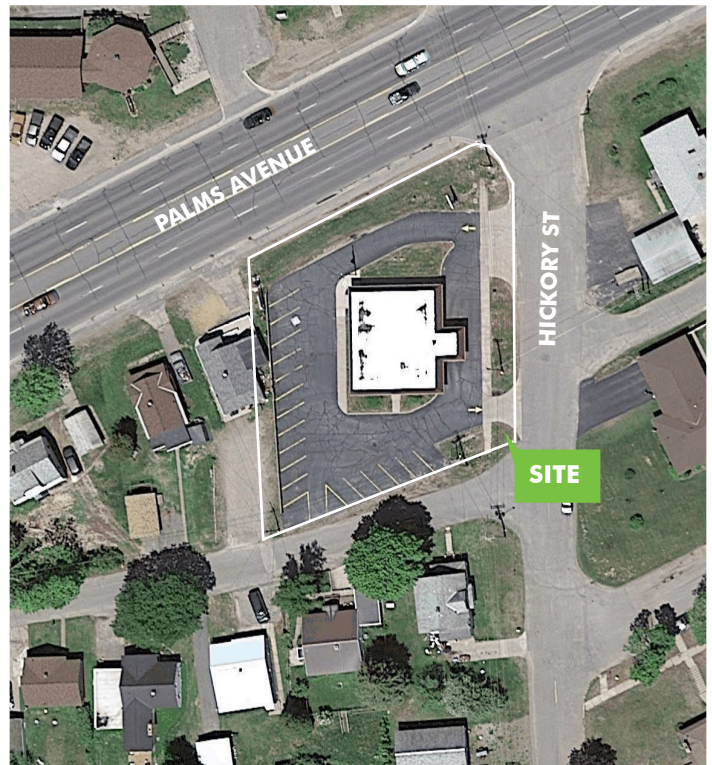
662 PALMS AVENUE, ISHPEMING, MI 49849



PROPERTY FEATURES

Office/Retail Building located on a hard corner in downtown Ishpeming. Excellent opportunity for redevelopment or renovation.

- + Sale Price: \$199,000
- + Parcel Size: .5 acres
- + 2,353 SF freestanding building
- + 146 ft frontage on Palms Ave
- + Parking: 19 spaces
- + Traffic Count: 14,482 on Palms Ave
- + APN: 52-51-600-018-00



FOR SALE: OFFICE/RETAIL BUILDING

Ishpeming, MI

662 PALMS AVENUE, ISHPEMING, MI 49849



AERIAL



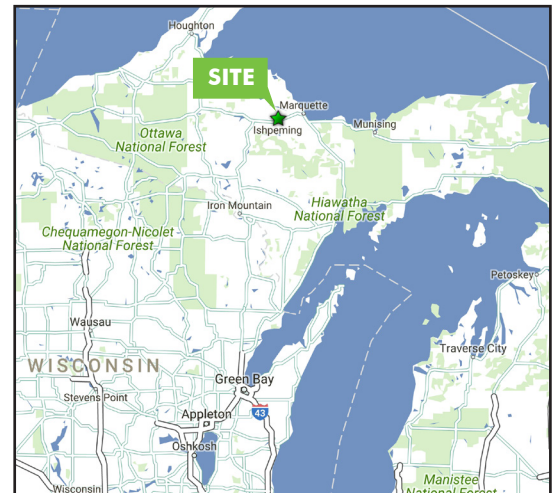
DEMOGRAPHICS

2016 Estimated Demographics

	1 Mile	3 Miles	5 Miles
Population	3,869	11,910	16,135
Daytime Population	1,830	7,911	12,333
Average Household Income	\$49,683	\$53,055	\$55,971
Median Household Income	\$41,314	\$42,654	\$45,330
Median Home Value	\$83,278	\$89,993	\$95,399

Traffic Counts

Palms Avenue	14,482
---------------------	---------------



CONTACT US

David Stefan

ReMax 1st Realty
 518 Front St
 Marquette, MI 49855
 T +1 906 225 1136
 C +1 906 236 9412
 david@dstefan.com

Information is subject to verification and no liability for errors or omissions is assumed. Price is subject to change and listing withdrawal.

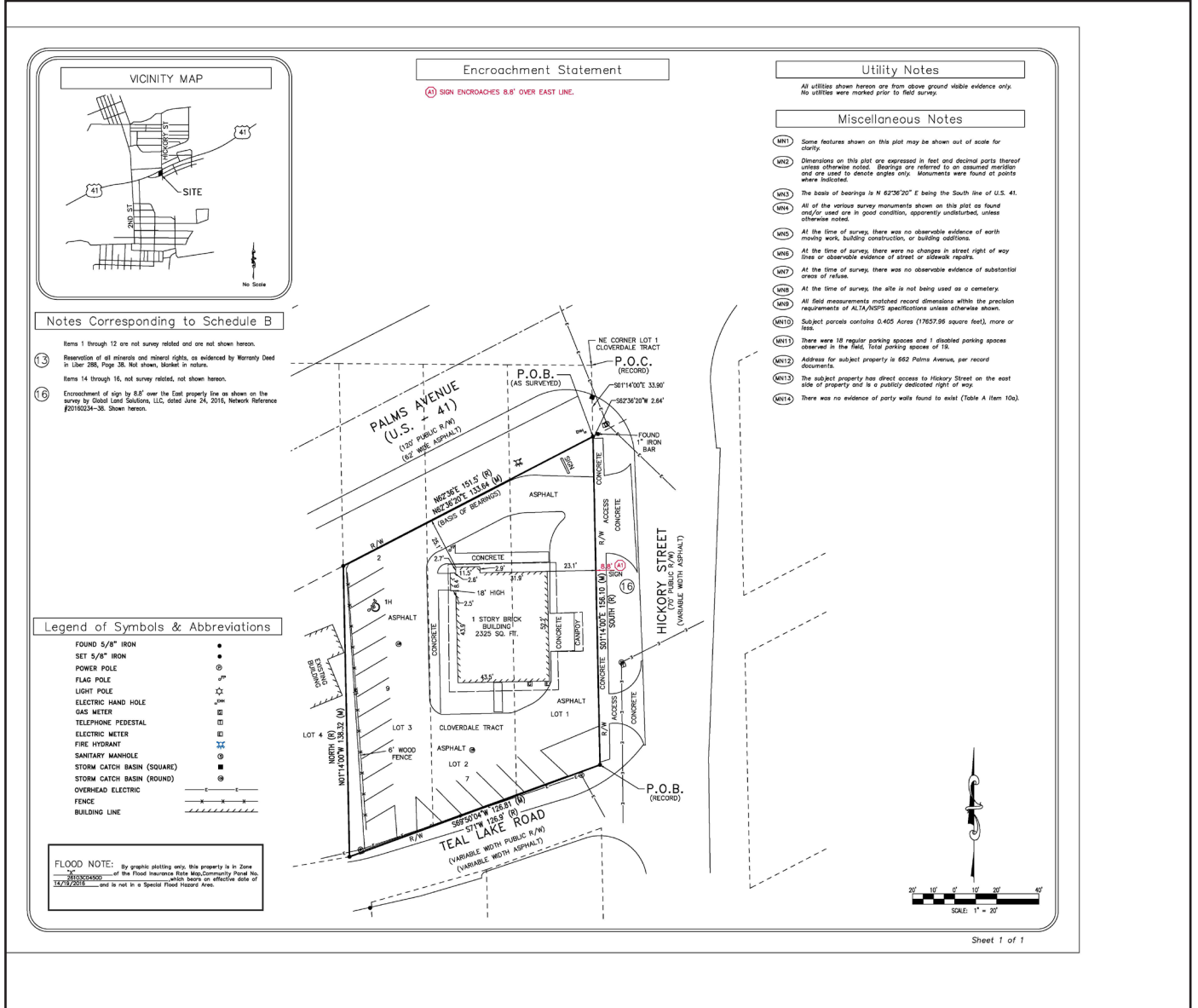
FOR SALE: OFFICE/RETAIL BUILDING

Ishpeming, MI

662 PALMS AVENUE, ISHPEMING, MI 49849



SITE SURVEY



CONTACT US

David Stefan

ReMax 1st Realty
 518 Front St
 Marquette, MI 49855
 T +1 906 225 1136
 C +1 906 236 9412
 david@dstefan.com

Information is subject to verification and no liability for errors or omissions is assumed. Price is subject to change and listing withdrawal.