

ONLY ONE FLOOR
AVAILABLE

CAREW
HOUSE

Railway Approach,
Wallington, Surrey, SM6 0DX

Refurbished offices with excellent on-site car parking
7,938 sq ft To Let

carewhouse.co.uk

CAREW HOUSE

Railway Approach,
Wallington, Surrey, SM6 0DX



Situated adjacent to Wallington train station and close to an abundance of local amenities

Location

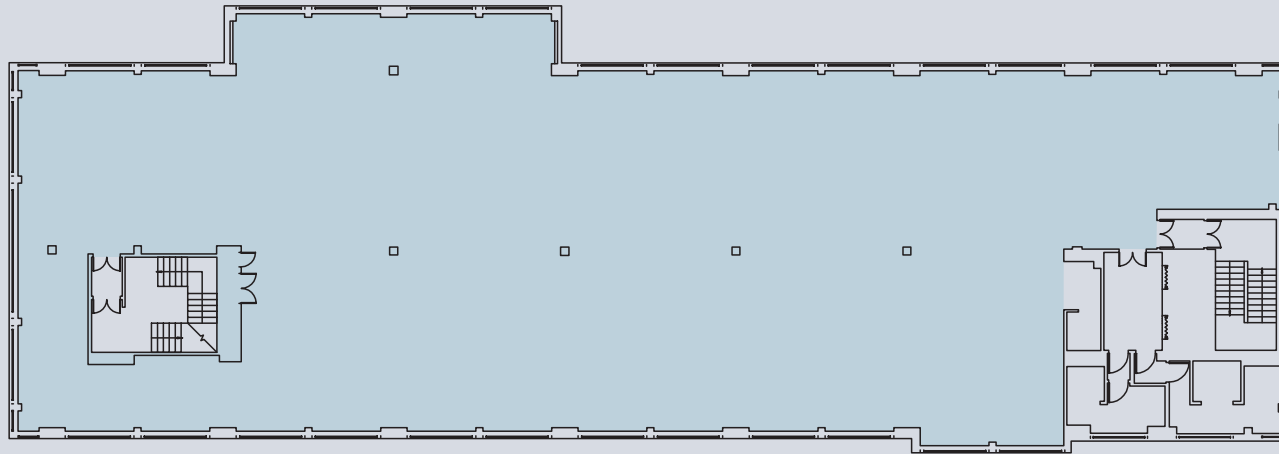
Wallington is situated between Croydon and Sutton and is approximately 14 miles to the south of central London.

Access to the national motorway network is provided at the M25/M23 intersection (6 miles approx) with Gatwick and Heathrow Airports being 19 miles and 24 miles distant respectively.

Wallington train station provides direct services to both Victoria and London Bridge (35 mins), West Croydon and Sutton.

Carew House is situated adjacent to Wallington Station whilst all town centre amenities are within a short walk including Sainsbury's, Tesco, WH Smith, Boots and Pizza Express.





Typical floor plan



Description

Carew House comprises a six storey office building which was constructed in the mid 1980s & arranged on lower ground, ground and four upper floors.

Specification

- Comfort Cooling
- Perimeter heating
- Mineral fibre suspended ceilings
- LED lighting
- Solid floors
- Male and female WC's on each floor
- 19 on-site car parking spaces (1:417 sq ft)
- EPC rating D88

Floor Areas

Floor	sq ft	sq m
Third	7,938	737.4
Total	7,938	737.4

(Approx net internal areas).

CAREW HOUSE

Railway Approach,
Wallington, Surrey, SM6 0DX



Communications

By Road

Croydon	3 miles
M25/M23 intersection	5.5 miles
Central London	10 miles
Gatwick Airport	19 miles
Heathrow Airport	24 miles

By Rail

West Croydon	6 mins
Sutton	6 mins
London Victoria	35 mins
London Bridge	35 mins

carewarehouse.co.uk

Viewing

Strictly by appointment through the joint sole agents.

MISREPRESENTATION ACT 1967: The particulars are believed to be correct, but accuracy cannot be guaranteed and they are expressly excluded from any contract. Compiled May 2019.

James Shillabeer

DDi: 020 3362 4351

E: jamesshillabeer@brayfoxsmith.com

Richard Harding

DDi: 020 3362 4349

E: richardharding@brayfoxsmith.com

Neil Barker

DDi: 020 8662 2705

E: nbarker@shw.co.uk

Thomas Tarn

DDi: 01372 840297

E: ttarn@shw.co.uk

