



**Conveniently Located to I-93 -
Directly Adjacent to the New Park & Ride at Exit 2**

Located in TAX FREE Southern NH!

Unit 1:

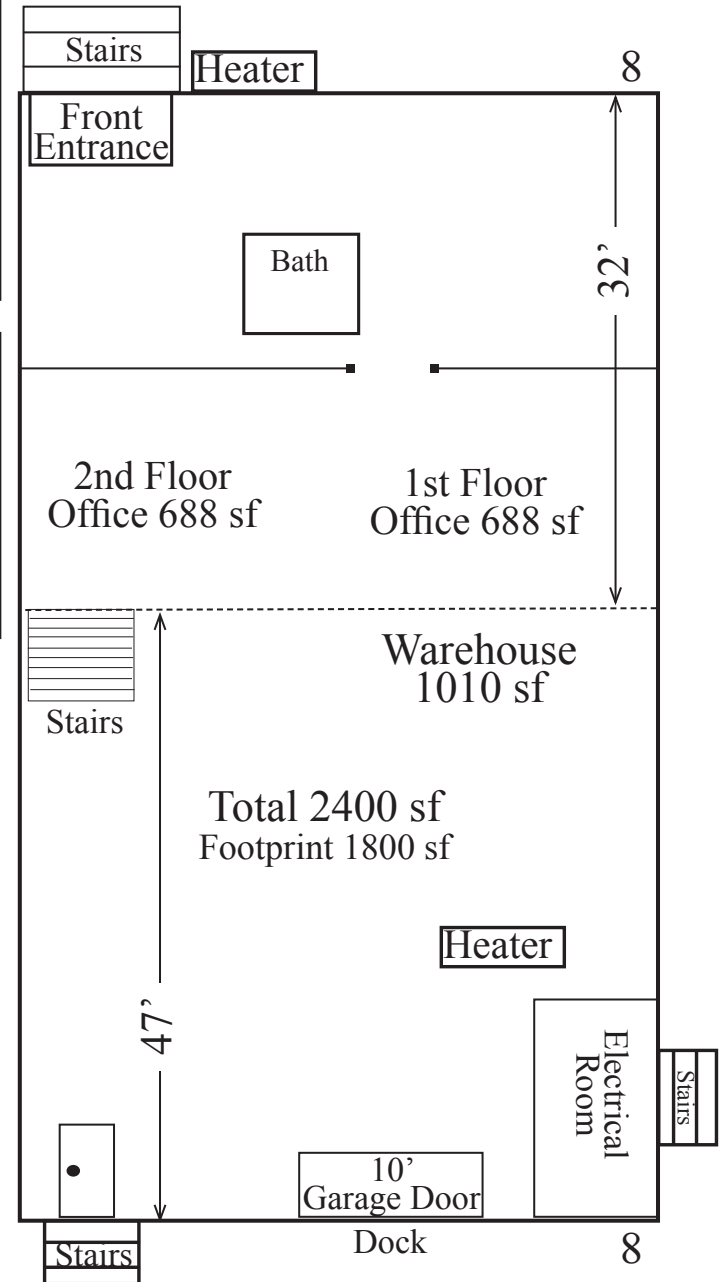
Total sf - 2400
1st Fl Office 688 sf
2nd Fl Office 688 sf
Warehouse - 1010 sf

Water Included
Sprinkler System
Air conditioning
Cat 6 for phone and computer
One bathroom
High speed T1 internet connection
Ample parking

Outstanding Features:

100 Amp electrical service, three phase
19 foot ceiling height
10 foot high loading dock door
Gas Heat. Propane

[CLICK FOR MORE INFO!](#)



Dan Charest
Cell: 603 490-3595
Email: dan@galleryllc.com

**Four Raymond Ave • Salem, NH
Unit 8**