



BAYSIDE TOWERS

4000 & 4100 East Third Avenue, Foster City



TISHMAN SPEYER

BOB GARNER



JON MACKEY



JOHN KRAFT



Newmark
Knight Frank



» **table of contents**

Project Highlights

01

Location

02

Transportation

03

Floorplans

04

Contact Agents

05

**BAYSIDE
TOWERS**



±150,658
square foot HQ opportunity



AVAILABLE SPACES

BAYSIDE II - 4100 E THIRD AVENUE

- Second Floor: ±19,525 square feet
- Fourth Floor: ±24,837 square feet (Available 08/01/18)
- Fifth Floor: ±24,782 square feet
- Sixth Floor: ±24,622 square feet

BAYSIDE I - 4000 E THIRD AVENUE

- Suite 100: ±7,485 square feet
- Fifth Floor: ±24,784 square feet (Available 01/01/19)
- Sixth Floor: ±24,623 square feet (Available 01/01/19)



HIGHLIGHTS

- :: Indoor / outdoor Tenant fitness center coming 2018
- :: Complimentary bike share program and bike workshop / storage facilities
- :: Complimentary BART/Caltrain shuttles to project
- :: Ride share partnership with Uber – Landlord incentive available
- :: Sweeping bay views
- :: Building top signage available
- :: Grade level roll-up door at building 4100
- :: On-site Specialty's drop zone
- :: Weekly food trucks and food delivery services
- :: Convenient mid peninsula location and proximate to major freeway and San Mateo Bridge
- :: 4/1000 parking
- :: Two six-story ±136,000 square foot Class A Office buildings



projecthighlights

02
location

CONVENIENT MID-PENINSULA LOCATION

31
miles
to San Jose

21
miles
to San
Francisco

10
miles
to East Bay
via San Mateo
Bridge

10
miles
to San
Francisco

29
miles
to San Jose

23
miles
to Oakland

BAYSIDE I

4000

East Third
Avenue

±137,478
Square Feet

BAYSIDE II

4100

East Third
Avenue

±135,267
Square Feet



Preferred Bayside Towers and Uber for Business program with credit incentives available

shuttle service
Foster City-Lincoln Centre Caltrain Shuttle

am

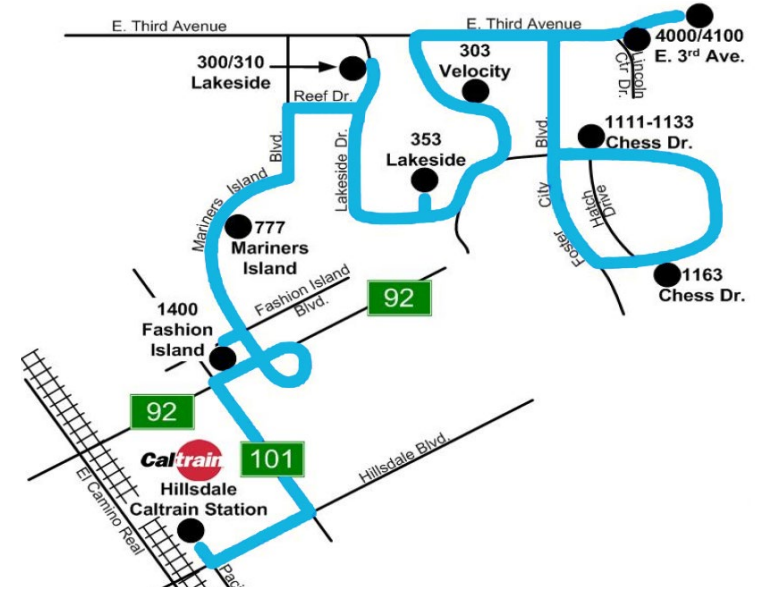
Northbound Caltrain No.	207	215	323	227
Arrives Hillsdale Station	6:51	7:28	8:16	8:51
Southbound Caltrain No.	206	314	218	228
Arrives Hillsdale Station	6:42	7:42	8:03	9:03

AM SHUTTLE				
Departs Hillsdale Station	6:56	7:47	8:25	9:08
Bayside Towers	7:18	8:09	8:47	9:30

pm

PM SHUTTLE						
Bayside Towers	3:26	4:14	4:52	5:32	6:10	6:48
Arrives Hillsdale Station	3:41	4:30	5:08	5:48	6:26	7:03

Northbound Caltrain No.	159	263	371	277	283	287
Departs Hillsdale Station	3:56	4:42	5:17	6:08	6:42	7:08
Southbound Caltrain No.	156	360	264	274	380	284
Departs Hillsdale Station	3:46	4:35	5:13	6:13	6:40	7:13



shuttle service
Foster City-North BART/Caltrain Shuttle

am

BART Arrives Millbrae Station	6:21	6:51	7:21	7:51	8:21	8:51	9:21
Northbound Caltrain No.	305	207	313	217	323	227	231
Arrives Millbrae Station	6:26	7:01	7:26	8:01	8:26	9:01	9:19
Southbound Caltrain No.	206	210	312	220	322	230	332
Arrives Millbrae Station	6:29	7:01	7:15	8:01	8:15	9:01	9:15

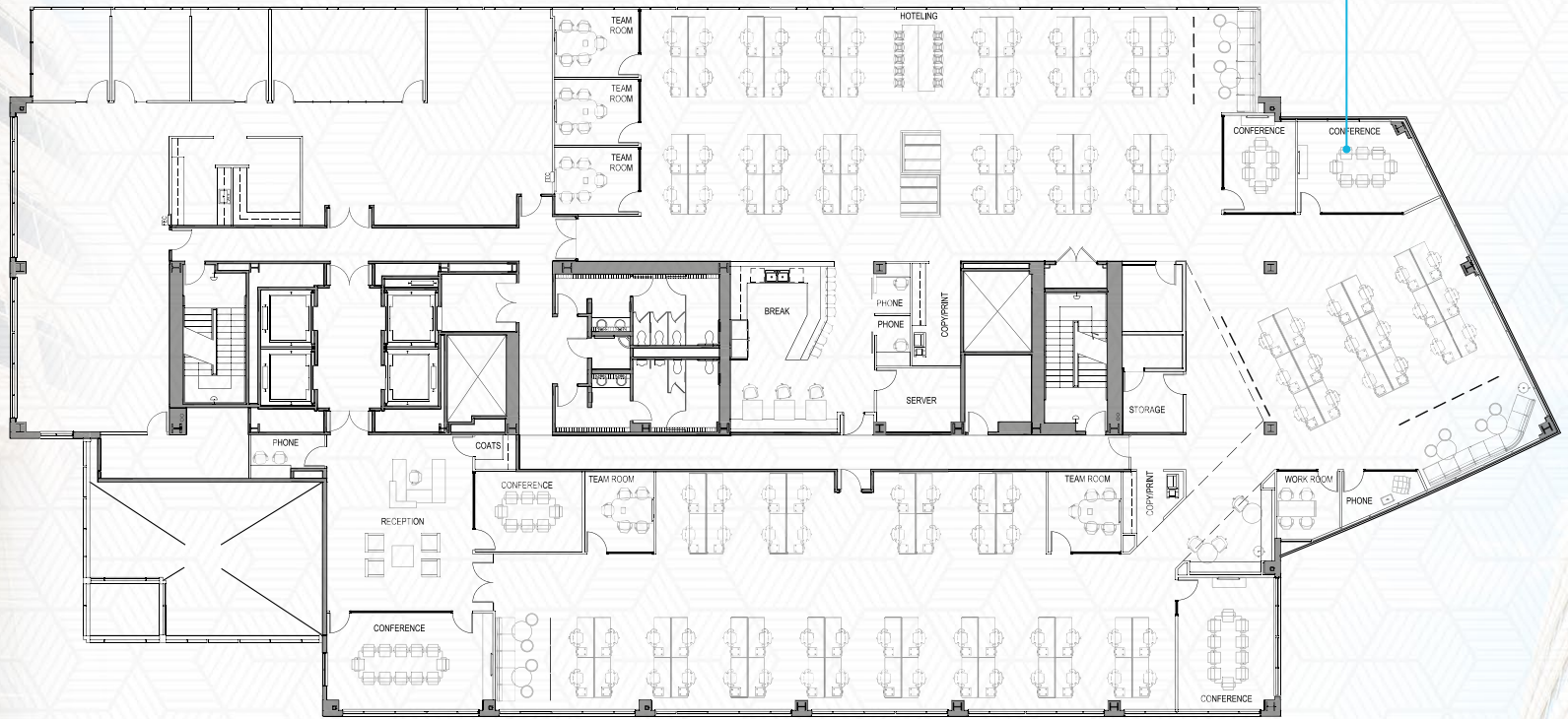
AM SHUTTLE							
Departs Millbrae Station	6:35	7:08	7:32	8:08	8:32	9:08	9:23
Bayside Towers	7:02	7:35	7:59	8:35	8:59	9:35	9:50

pm

PM SHUTTLE							
Bayside Towers	4:13	4:41	5:01	5:41	5:55	6:31	6:43
Arrives Millbrae Station	4:32	5:00	5:20	6:00	6:14	6:50	7:02

Northbound Caltrain No.	261	365	371	375	381	283	385
Departs Millbrae Station	4:45	5:07	5:27	6:09	6:28	6:59	7:07
Southbound Caltrain No.	366	268	370	278	380	284	288
Departs Millbrae Station	4:49	5:14	5:30	6:14	6:30	6:56	7:14
BART Departs Millbrae Station	4:46	5:16	5:31	6:16	6:31	7:01	7:21





*hypothetical plan



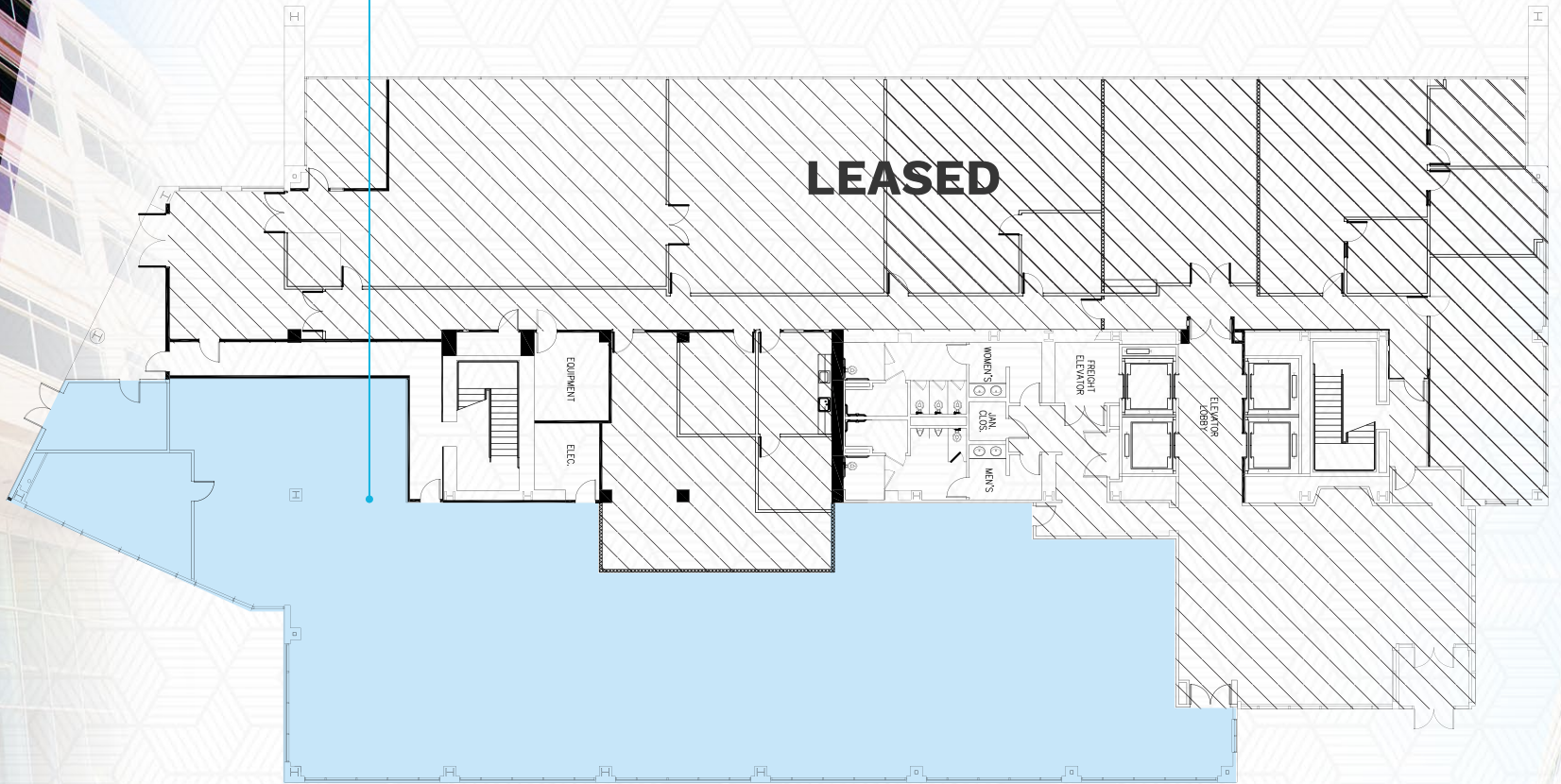




*hypothetical plan

SUITE 100
±7,485 SF

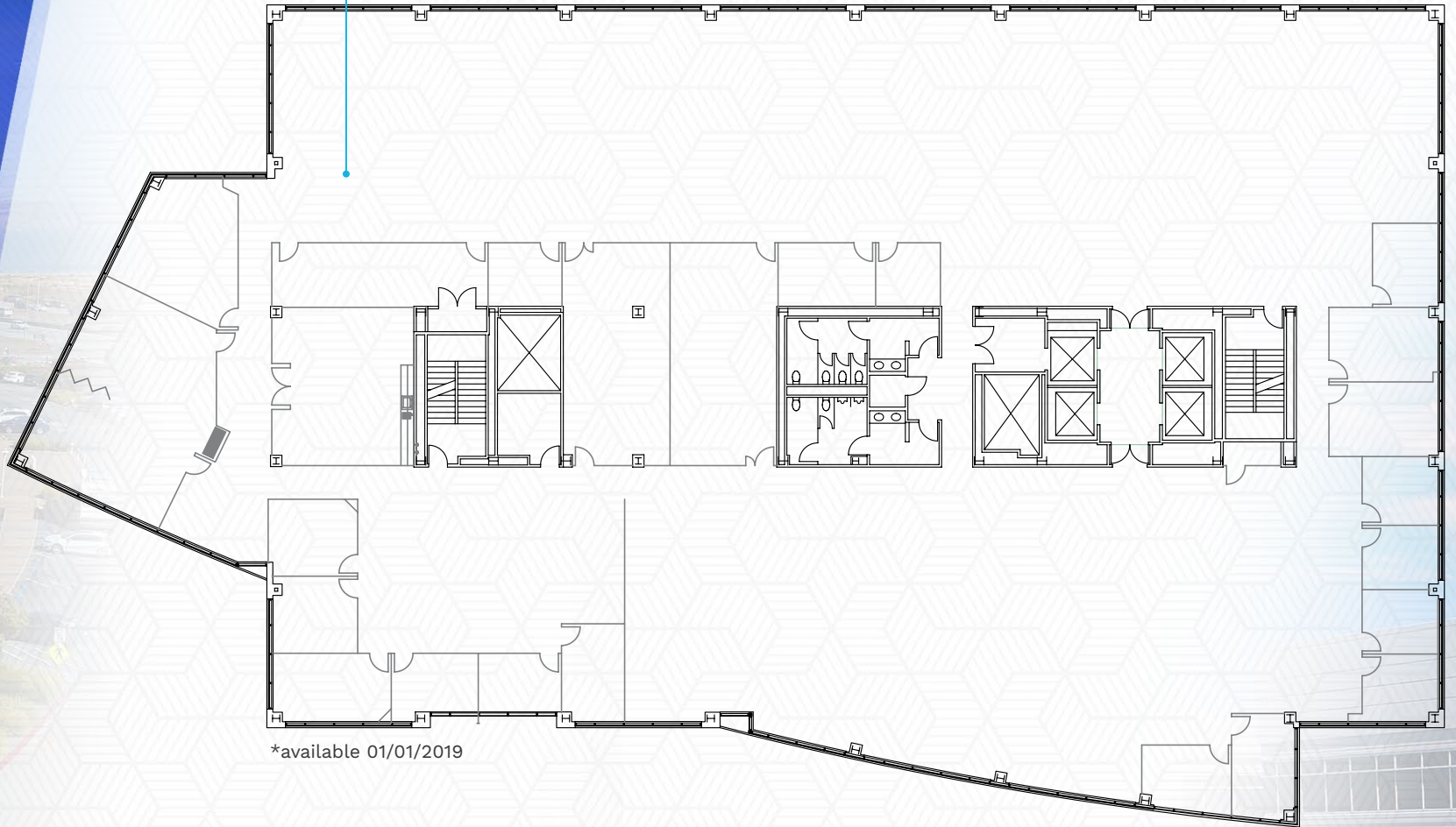
first floor
4000 EAST THIRD AVENUE



BAYSIDE I

±24,784 SF

fifth floor
4000 EAST THIRD AVENUE

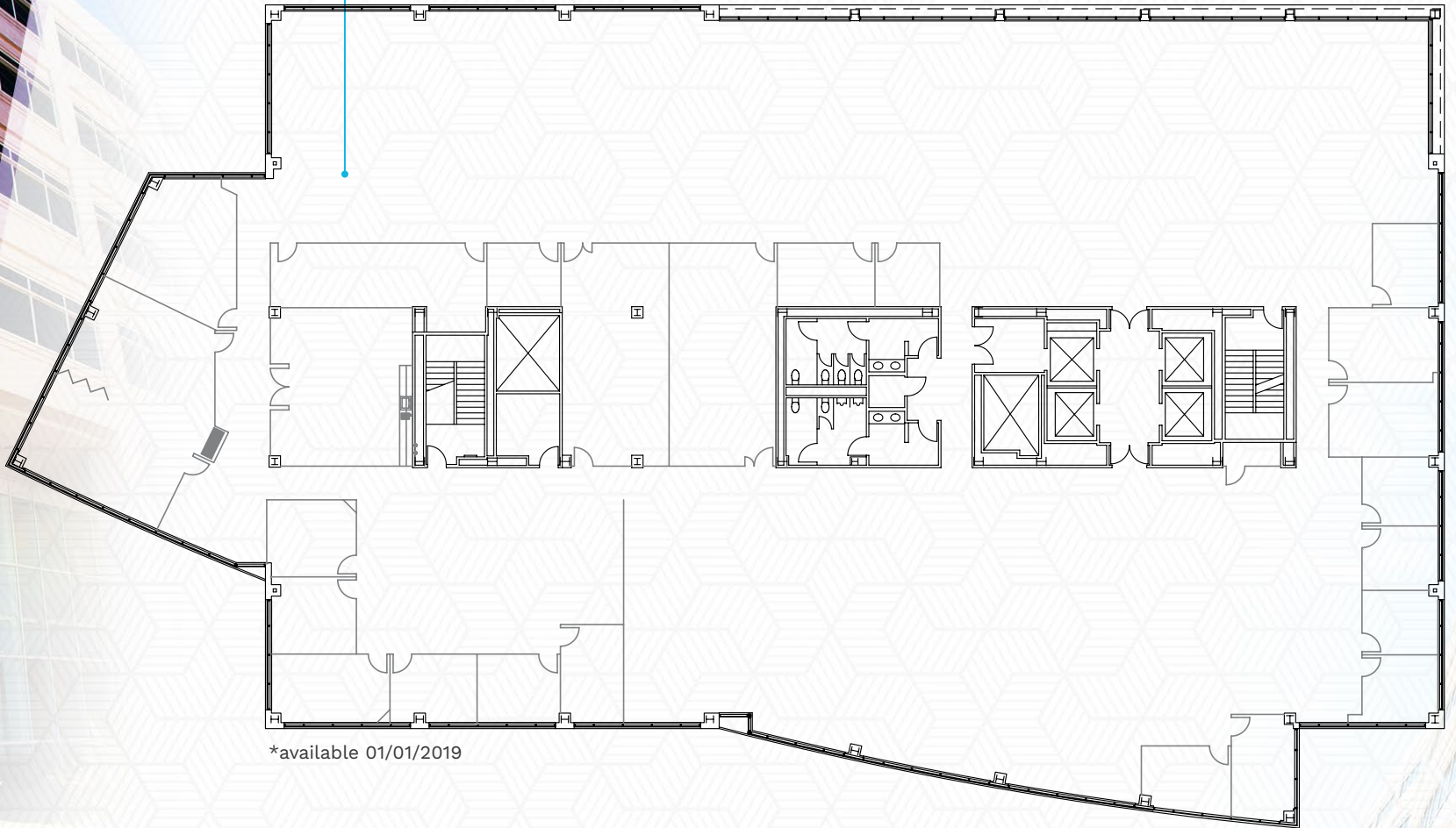


*available 01/01/2019

BAYSIDE I

±24,623 SF

sixth floor
4000 EAST THIRD AVENUE



*available 01/01/2019

BAYSIDE I



»» **Bob Garner**
Executive Managing Director
bob@newmarkccarey.com
650.358.5266
CA RE License #00936790

»» **Jon Mackey**
Senior Managing Director
jmackey@newmarkccarey.com
408.987.4129
CA RE License #01362376

»» **John Kraft**
Managing Director
jkraft@newmarkccarey.com
650.358.5277
CA RE License #01787698

2804 Mission College Blvd, Suite 120, Santa Clara | 2950 South Delaware Street, Suite 125, San Mateo | 09-1935.05/18

The information contained herein has been obtained from sources deemed reliable but has not been verified and no guarantee, warranty or representation, either express or implied, is made with respect to such information. Terms of sale or lease and availability are subject to change or withdrawal without notice.



TISHMAN SPEYER

