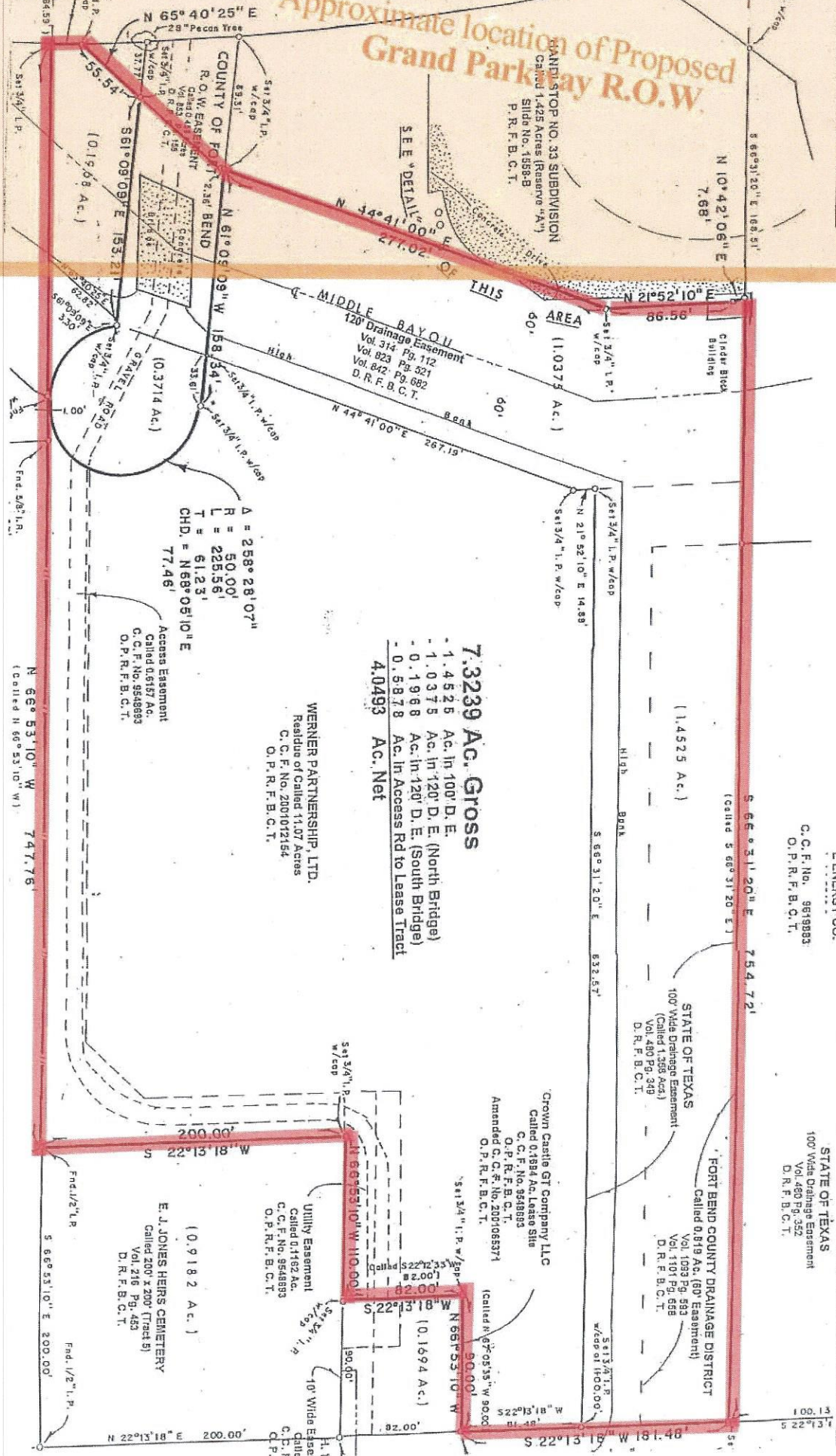


M. HWY. 2759  
 (CRABB RIVER ROAD)

STATE OF TEXAS  
 Called 0.858 Acres  
 Vol. 747 Pg. 163 &  
 Vol. 747 Pg. 167  
 D.R.F.B.C.T.

Approximate location of Proposed  
 Grand Parkway R.O.W.



**7.3239 Ac. Gross**  
 - 1.4525 Ac. In 100' D. E.  
 - 1.0375 Ac. In 120' D. E. (North Bridge)  
 - 0.1968 Ac. In 120' D. E. (South Bridge)  
 - 0.5818 Ac. In Access Rd to Lease Tract  
**4.0493 Ac. Net**

**WERNER PARTNERSHIP, LTD.**  
 Residue of Called 11.07 Acres  
 C.C.F. No. 2001072154  
 O.P.R.F.B.C.T.

$\Delta = 258^\circ 28' 07''$   
 $R = 50.00'$   
 $L = 225.56'$   
 $T = 61.23'$   
 $CHD = N68^\circ 05' 10'' E$   
 $77.48'$

Access Easement  
 Called 0.8157 Ac.  
 C.C.F. No. 9548893  
 O.P.R.F.B.C.T.

N 66° 53' 10" W 747.76'  
 (Called N 66° 53' 10" W)

**EVERETT I. VU.**  
 C.C.F. No. 9819883  
 O.P.R.F.B.C.T.

**STATE OF TEXAS**  
 100' Wide Drainage Easement  
 (Called 1.356 Ac.)  
 Vol. 480 Pg. 349  
 D.R.F.B.C.T.

**STATE OF TEXAS**  
 100' Wide Drainage Easement  
 Vol. 480 Pg. 352  
 D.R.F.B.C.T.

**FORT BEND COUNTY DRAINAGE DISTRICT**  
 Called 0.819 Ac. (80' Easement)  
 Vol. 1093 Pg. 583  
 Vol. 1101 Pg. 628  
 D.R.F.B.C.T.

**Crown Castle GT Company LLC**  
 Called 0.1594 Ac. Lease Site  
 C.C.F. No. 9548893  
 O.P.R.F.B.C.T.  
 Amended C.C.F. No. 2001065371  
 O.P.R.F.B.C.T.

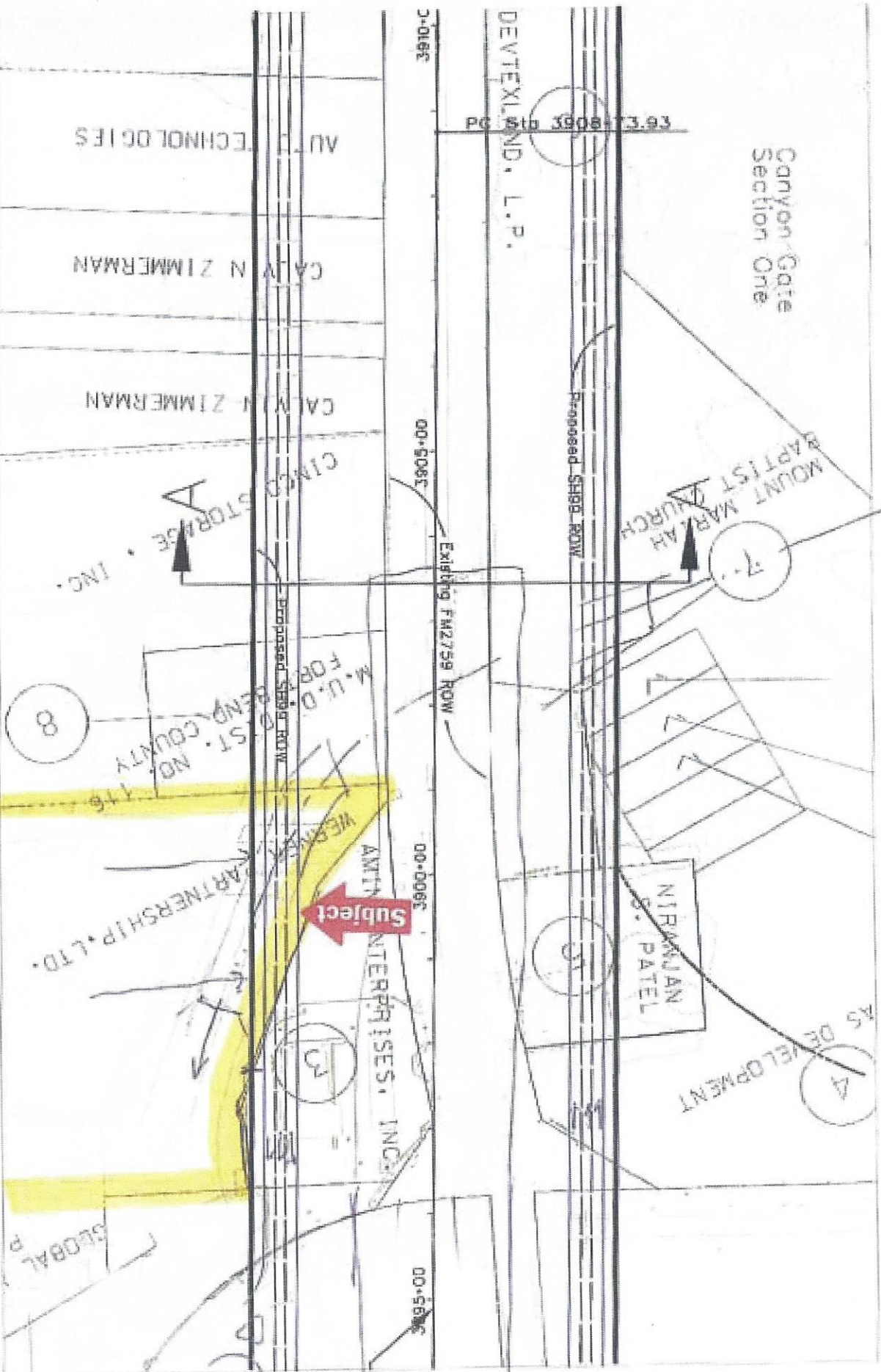
**E. J. JONES HEIRS CEMETERY**  
 Called 200' X 200' (Tract B)  
 Vol. 216 Pg. 453  
 D.R.F.B.C.T.

Utility Easement  
 Called 0.1162 Ac.  
 C.C.F. No. 9548893  
 O.P.R.F.B.C.T.

N 22° 13' 18" E 200.00'  
 (Called N 22° 13' 18" E)

100.13  
 5 22° 13' 18" E

THE STATE OF TEXAS, COUNTY OF BEND



Canyon Gate Section One

MOUNT MARAH BAPTIST CHURCH

NIRMALAN S. PATEL

Subject

ENTERPRISES, INC.

WESTERN PARTNERSHIP, LTD.

M. U. D. FOR BEND COUNTY

CINCO STORAGE, INC.

CALVIN ZIMMERMAN

CALVIN ZIMMERMAN

AUTO TECHNOLOGIES

DEVTEXLAND, L.P.

PG 3908-13.93

Proposed SH98 ROW

Existing FM2759 ROW

00-5085

00-5086

00-5665

00-5666

00-5667

00-5668

00-5669

00-5670

00-5671

00-5672

00-5673

00-5674

00-5675

00-5676

00-5677

00-5678

00-5679

00-5680

00-5681

00-5682

00-5683

00-5684

00-5685

00-5686

00-5687

00-5688

00-5689

00-5690

00-5691

00-5692

00-5693

00-5694

00-5695

00-5696

00-5697

00-5698

00-5699

00-5700

00-5701

00-5702

00-5703

00-5704

00-5705

00-5706

00-5707

00-5708

00-5709

00-5710

00-5711

00-5712

00-5713

00-5714

00-5715

00-5716

00-5717

00-5718

00-5719

00-5720

00-5721

00-5722

00-5723

00-5724

00-5725

00-5726

00-5727

00-5728

00-5729

00-5730

00-5731

00-5732

00-5733

00-5734

00-5735

00-5736

00-5737

00-5738

00-5739

00-5740

00-5741

00-5742

00-5743

00-5744

00-5745

00-5746

00-5747

00-5748

00-5749

00-5750

00-5751

00-5752

00-5753

00-5754

00-5755

00-5756

00-5757

00-5758

00-5759

00-5760

00-5761

00-5762

00-5763

00-5764

00-5765

