

FOR LEASE

BANK OF OKLAHOMA

1500

SOUTH MIDWEST BOULEVARD

Midwest City, OK 73110



PROPERTY FEATURES

OFFICE SPACE

Great space in the Bank of Oklahoma Building. Professionally managed with excellent exposure to Midwest Boulevard and 15th Street.

- + 1,344 ± SF
- + Approximately 134 parking spaces (8 handicap)
- + Low-rise office (2 stories)
- + 3-5 year lease term
- + Lease rate: \$11.50 per square foot
Free rent negotiable on 3-5 year lease term



COMPETITIVE RATES

- + Great space in the Bank of Oklahoma building
- + Excellent exposure to Midwest Boulevard and 15th Street
- + Professionally managed
- + Competitive rates
- + Near Tinker Air Force Base
- + Good ingress and egress
- + Shared conference room available
- + Conveniently located near restaurants, shopping and Interstate 40



CONTACT US

TOM LANGE

Vice President
+1 405 607 6249
tom.lange@cbre.com

JIM AUSTIN

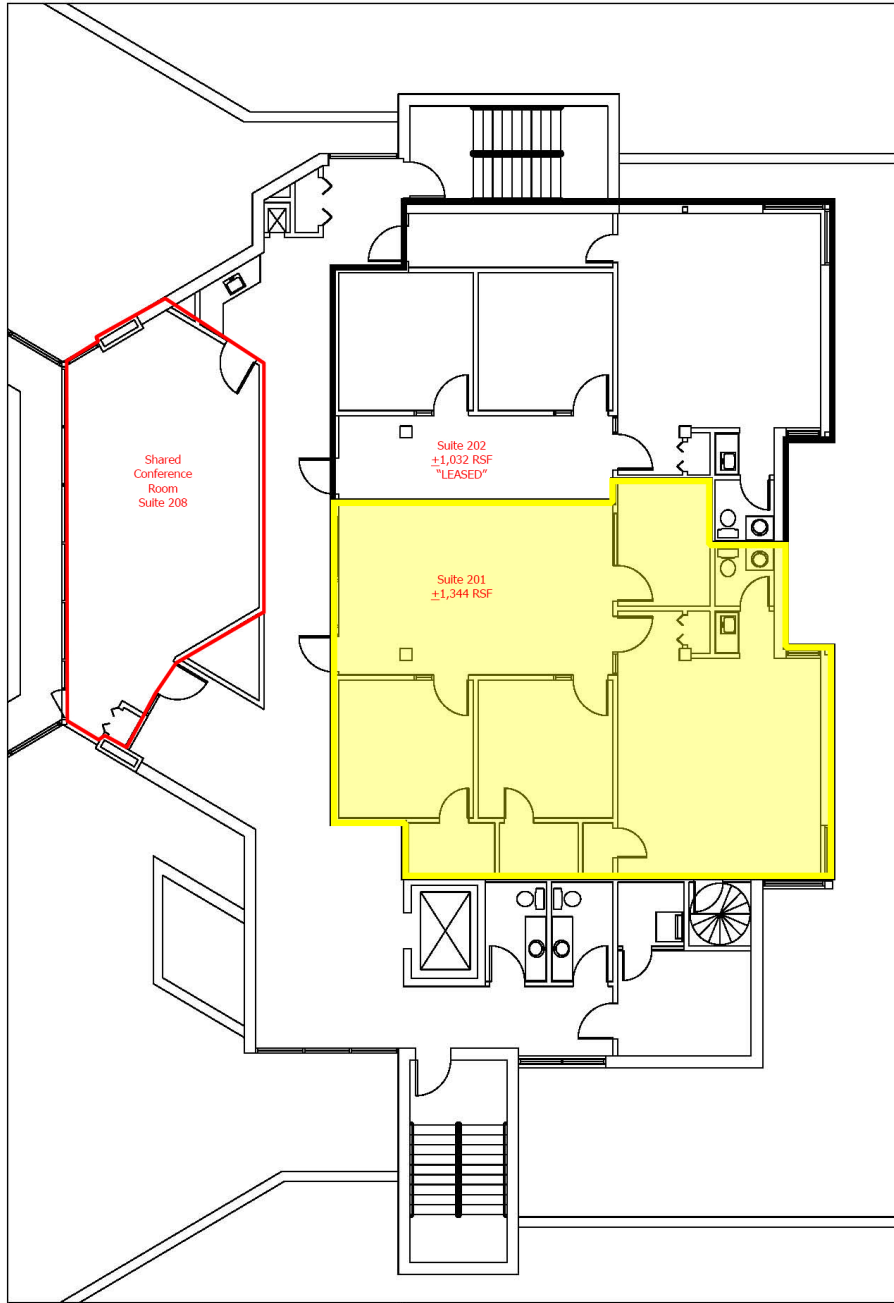
Vice President
+1 405 607 6252
jim.austin@cbre.com

www.cbre.com/oklahomacity

CBRE

FOR LEASE
BANK OF OKLAHOMA

1500
S. MIDWEST BOULEVARD
Midwest City, OK 73110



© 2017 CBRE, Inc. The information contained in this document has been obtained from sources believed reliable. While CBRE, Inc. does not doubt its accuracy, CBRE, Inc. has not verified it and makes no guarantee, warranty or representation about it. It is your responsibility to independently confirm its accuracy and completeness. Any projections, opinions, assumptions or estimates used are for example only and do not represent the current or future performance of the property. The value of this transaction to you depends on tax and other factors which should be evaluated by your tax, financial and legal advisors. You and your advisors should conduct a careful, independent investigation of the property to determine to your satisfaction the suitability of the property for your needs.

Photos herein are the property of their respective owners and use of these images without the express written consent of the owner is prohibited.