

HYVEE ANCHORED STRIP CENTER FOR LEASE

2919 SW Wanamaker Rd., Topeka, KS 66614



PROPERTY HIGHLIGHTS

- HyVee Grocery Anchored Retail Strip Center
- Excellent visibility to the HyVee customer
- Well situated along South Wanamaker retail corridor
- Strongest Demographics in Topeka!

OFFERING SUMMARY

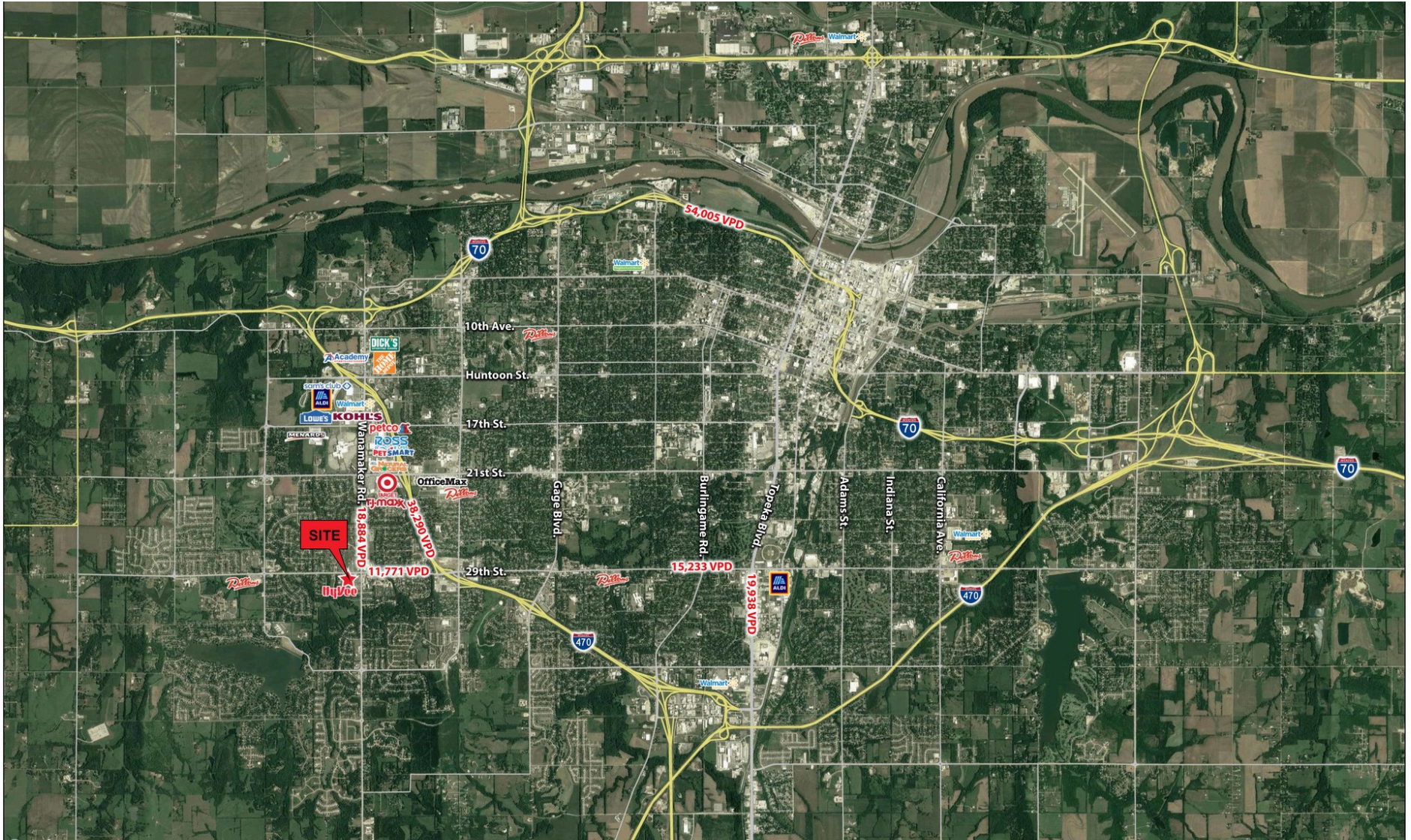
Lease Rate:	\$17.00 PSF
Available SF:	896 - 2,693 SF
Building Size:	16,698 SF

SPACES	LEASE RATE	SPACE SIZE
Suite B	\$17.00 SF/yr	896 SF
Suite C	\$17.00 SF/yr	2,693 SF
Suite J	\$17.00 SF/yr	2,683 SF
Suite L	\$17.00 SF/yr	2,447 SF

DEMOGRAPHICS	1 MILE	5 MILES	10 MILES
Total Households	3,975	39,965	77,339
Total Population	9,134	88,815	182,458
Average HH Income	\$66,853	\$68,080	\$58,318

HYVEE ANCHORED STRIP CENTER FOR LEASE

2919 SW Wanamaker Rd., Topeka, KS 66614



HYVEE ANCHORED STRIP CENTER FOR LEASE

2919 SW Wanamaker Rd., Topeka, KS 66614

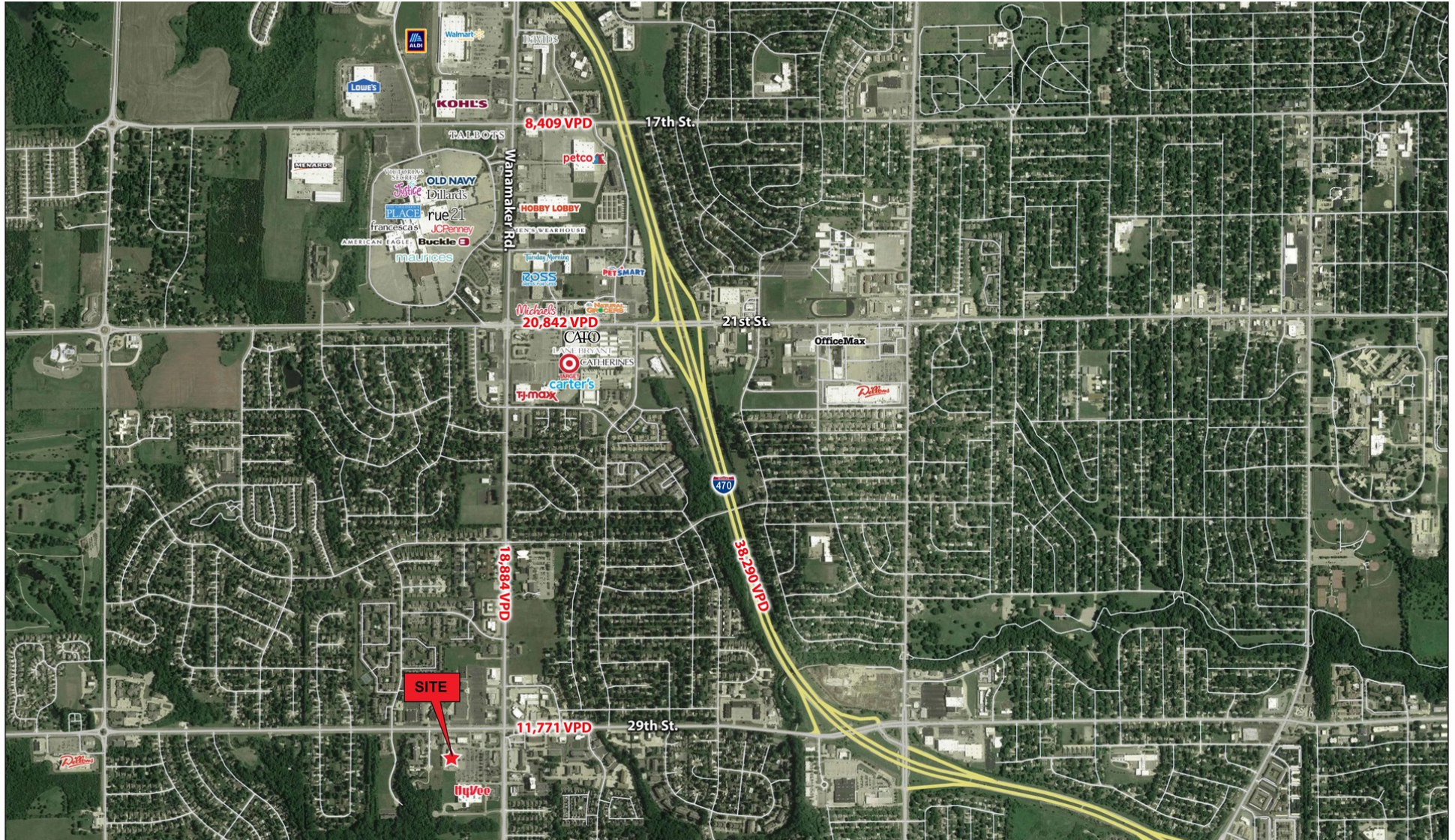


Jordan Zenger | 913.558.5183 | jzenger@fergprop.com

300 WYANDOTTE ST., SUITE 150 | KANSAS CITY, MO 64105 | 816.781.2520 | WWW.FERGPROP.COM

HYVEE ANCHORED STRIP CENTER FOR LEASE

2919 SW Wanamaker Rd., Topeka, KS 66614



HYVEE ANCHORED STRIP CENTER FOR LEASE

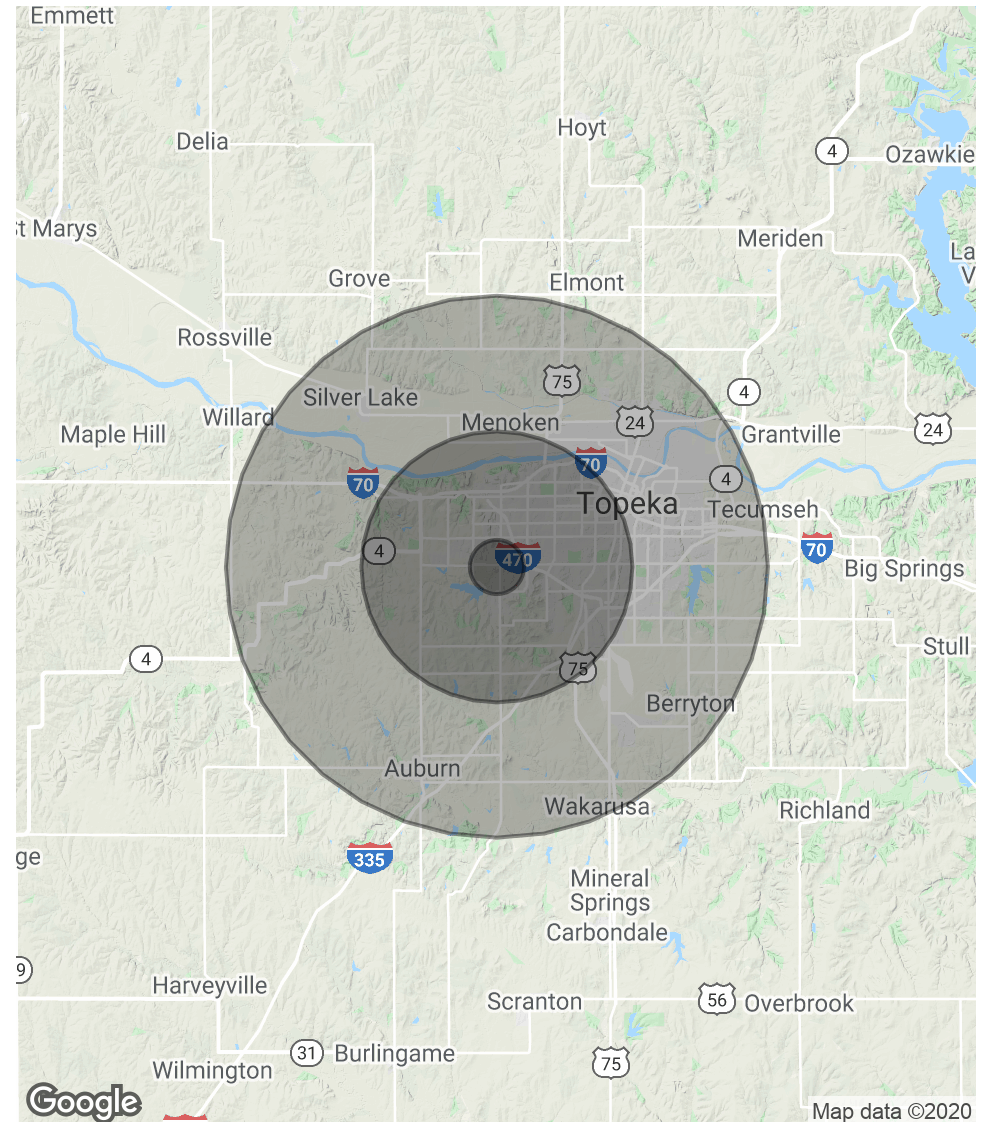
2919 SW Wanamaker Rd., Topeka, KS 66614

DEMOGRAPHICS MAP & REPORT

POPULATION	1 MILE	5 MILES	10 MILES
Total Population	9,134	88,815	182,458
Average age	40.4	40.8	37.7
Average age (Male)	39.9	39.2	36.3
Average age (Female)	42.4	42.2	39.1

HOUSEHOLDS & INCOME	1 MILE	5 MILES	10 MILES
Total households	3,975	39,965	77,339
# of persons per HH	2.3	2.2	2.4
Average HH income	\$66,853	\$68,080	\$58,318

* Demographic data derived from 2010 US Census



Jordan Zenger | 913.558.5183 | jzenger@fergprop.com

300 WYANDOTTE ST., SUITE 150 | KANSAS CITY, MO 64105 | 816.781.2520 | WWW.FERGPROP.COM