

117 Kennewick Ave.

Rendering of

Space for Lease

117 Kennewick Avenue

Kennewick, Washington

509.735.0415

S
P
A
C
E

F
O
R

L
E
A
S
E



PROPERTY
MANAGEMENT

COMMERCIAL DIVISION

CROWN PROPERTY MANAGEMENT
552 N. Colorado St. Ste. 101
Kennewick, WA 99336
www.crowncommercialrealestate.com

Harley Huston
Commercial Broker
509-851-2743 Mobile
509-619-7347 Office
hhuston@crowncrownpropertymanagement.com



117 W. Kennewick Ave



AVAILABLE:

± 3,000 RSF, divisible to 2,140 RSF

LEASE RATE:

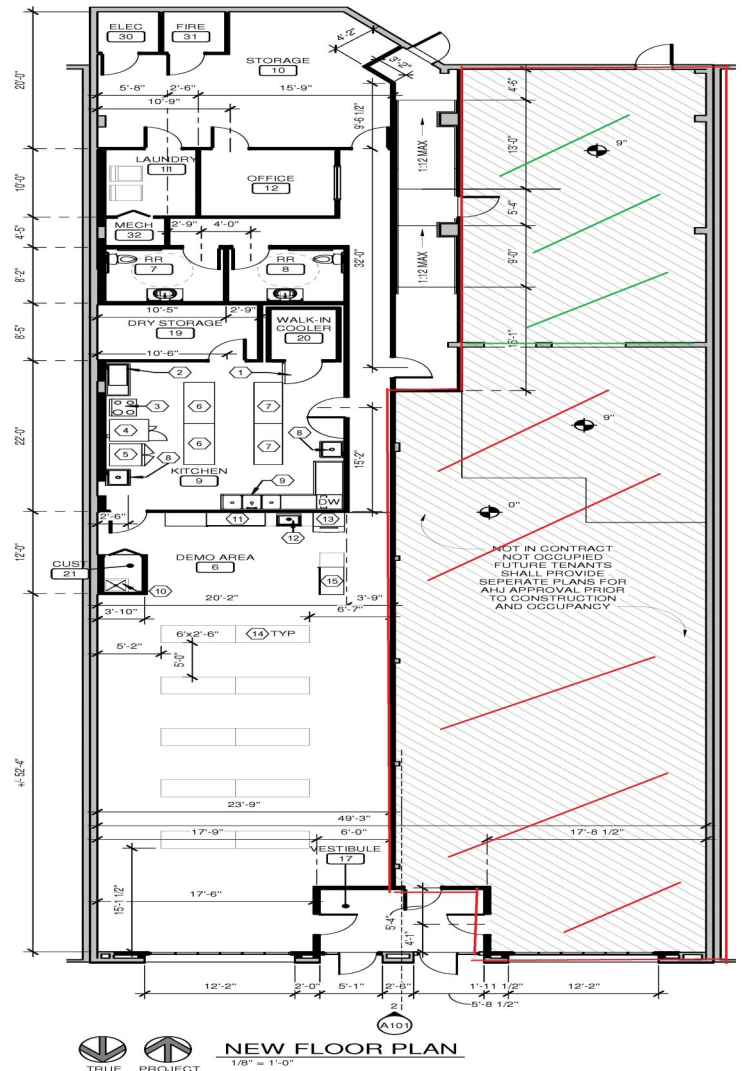
\$13.00 / RSF, plus NNN estimated at \$2.80 / RSF

JOIN TENANTS:

Layered Cake Artistry

SUMMARY:

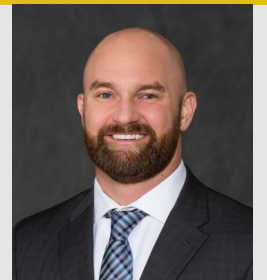
Opportunity to do business in iconic Downtown Kennewick location. Building is receiving brand new facade, roof and mechanical system perfect for new life in Downtown Kennewick with an old world Mediterranean meets Industrial Modern vibe! Neighbor suite already leased to Layered Cake Artistry with demising wall to current space being installed soon. Space to be provided in Vanilla Shell condition with improvements negotiable.



COMMERCIAL DIVISION

CROWN PROPERTY MANAGEMENT
552 N. Colorado St. Ste. 101
Kennewick, WA 99336
www.crowncommercialrealestate.com

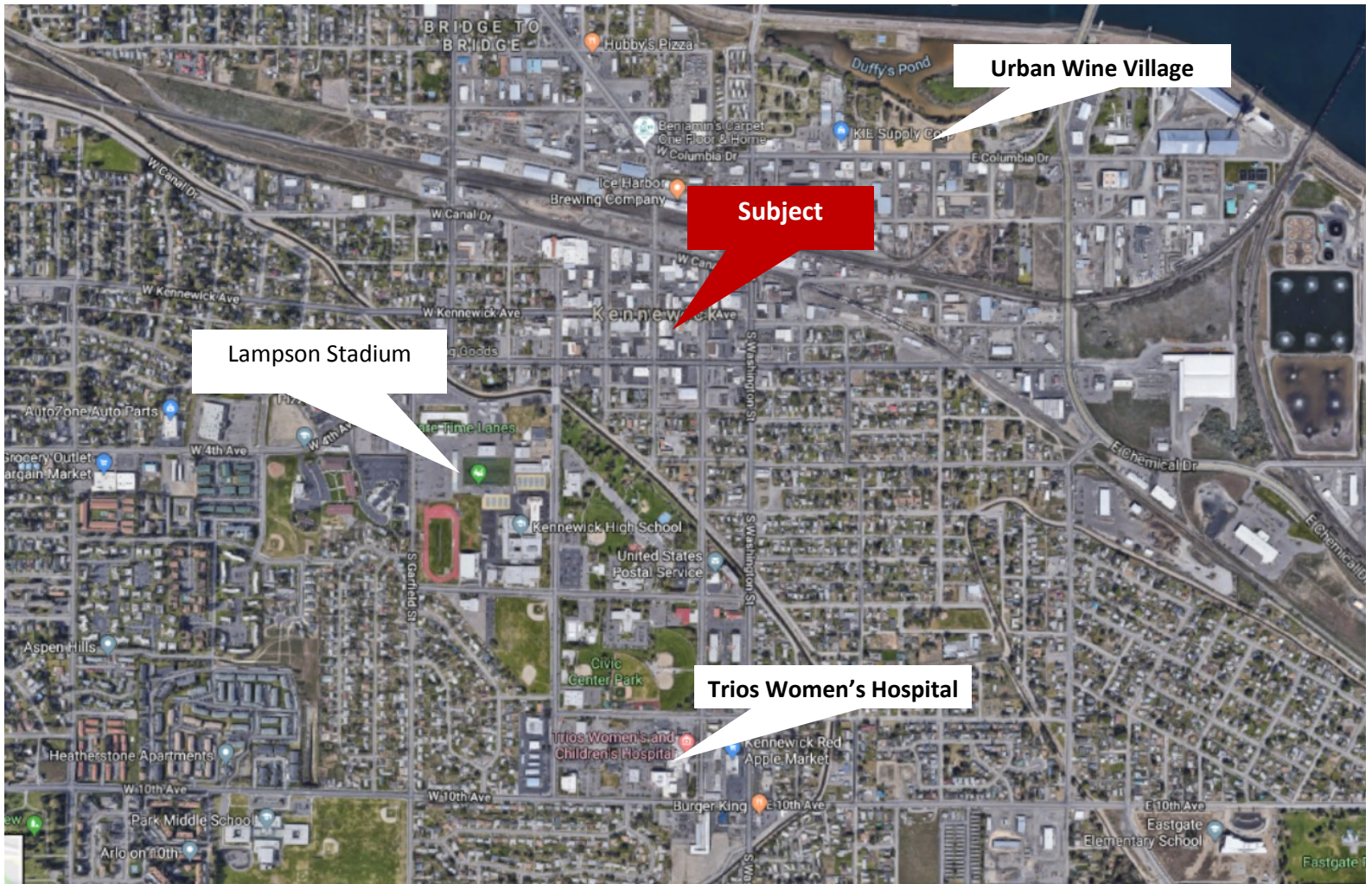
Harley Huston
Commercial Broker
509-851-2743 Mobile
509-619-7347 Office
hhuston@crowncrownproperty
Management.com



PROPERTY MANAGEMENT

117 W. Kennewick Ave

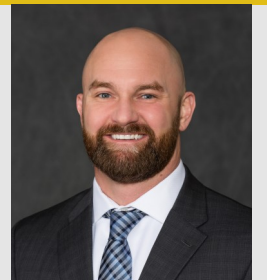
AERIAL MAP



COMMERCIAL DIVISION

CROWN PROPERTY MANAGEMENT
552 N. Colorado St. Ste. 101
Kennewick, WA 99336
www.crowncommercialrealestate.com

Harley Huston
Commercial Broker
509-851-2743 Mobile
509-619-7347 Office
hhuston@crownpropertymanagement.com





117 Kennewick Ave

Space for Lease

117 W. Kennewick Avenue
Kennewick, Washington

509-735-0415



**COMMERCIAL
DIVISION**

COMMERCIAL REAL ESTATE FIRM

552 N. COLORADO STREET, SUITE 101 | KENNEWICK, WA 99336

WWW.CROWNCOMMERCIALREALESTATE.COM