



INDUSTRIAL/MANUFACTURING FOR LEASE OR SALE

HEMPHILL AVE INDUSTRIAL

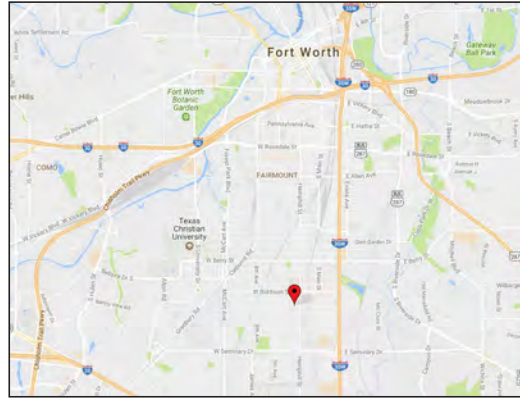
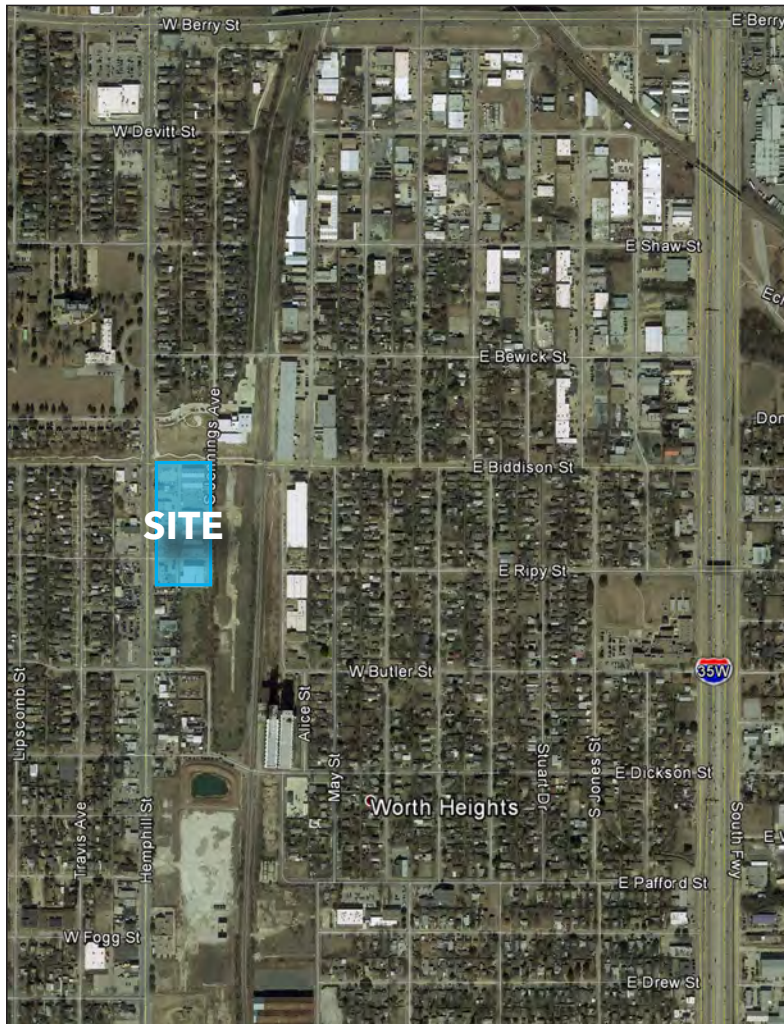
14,600 SF - 68,072 SF | FORT WORTH, TEXAS 76110



INDUSTRIAL/MANUFACTURING FOR LEASE OR SALE

HEMPHILL AVE INDUSTRIAL

14,600 SF - 68,072 SF | FORT WORTH, TEXAS 76110



PROPERTY INFORMATION

- 68,072 SF Total Includes:
 - Bldg. A 14,620 SF WH/Mfg @ 25' CH
 - Bldg. B 29,780 SF WH/Mfg @ 17' CH
 - Bldg. C 15,600 SF Warehouse @ 30' CH
 - Bldg. D 8,072 SF Office
- Outside Storage Available
- Multiple Leasing Scenarios
- Zoned PD - Planned Development
- 15,550 V.P.D. on Hemphill and 7,170 V.P.D. on W. Biddison
- AVAILABLE FEBRUARY 2018

LOCATION INFORMATION

- South Central Fort Worth
- Just West of I-35 W
- Physical Addresses: 3500 S Jennings, 3521 Hemphill, 3517 Hemphill, 3511 Hemphill and 3529 Hemphill

CALL BROKER FOR PRICING DETAILS

CONTACT INFORMATION

JEFF GIVENS
817.259.3536
jeff.givens@transwestern.com



The information provided herein was obtained from sources believed reliable; however, Transwestern makes no guarantees, warranties or representations as to the completeness or accuracy thereof. The presentation of this property is submitted subject to errors, omissions, change of price or conditions, prior sale or lease, or withdrawal without notice. Copyright © 2017 Transwestern.

INDUSTRIAL/MANUFACTURING FOR LEASE OR SALE

HEMPHILL AVE INDUSTRIAL

14,600 SF - 68,072 SF | FORT WORTH, TEXAS 76110



CONTACT INFORMATION

JEFF GIVENS
817.259.3536
jeff.givens@transwestern.com

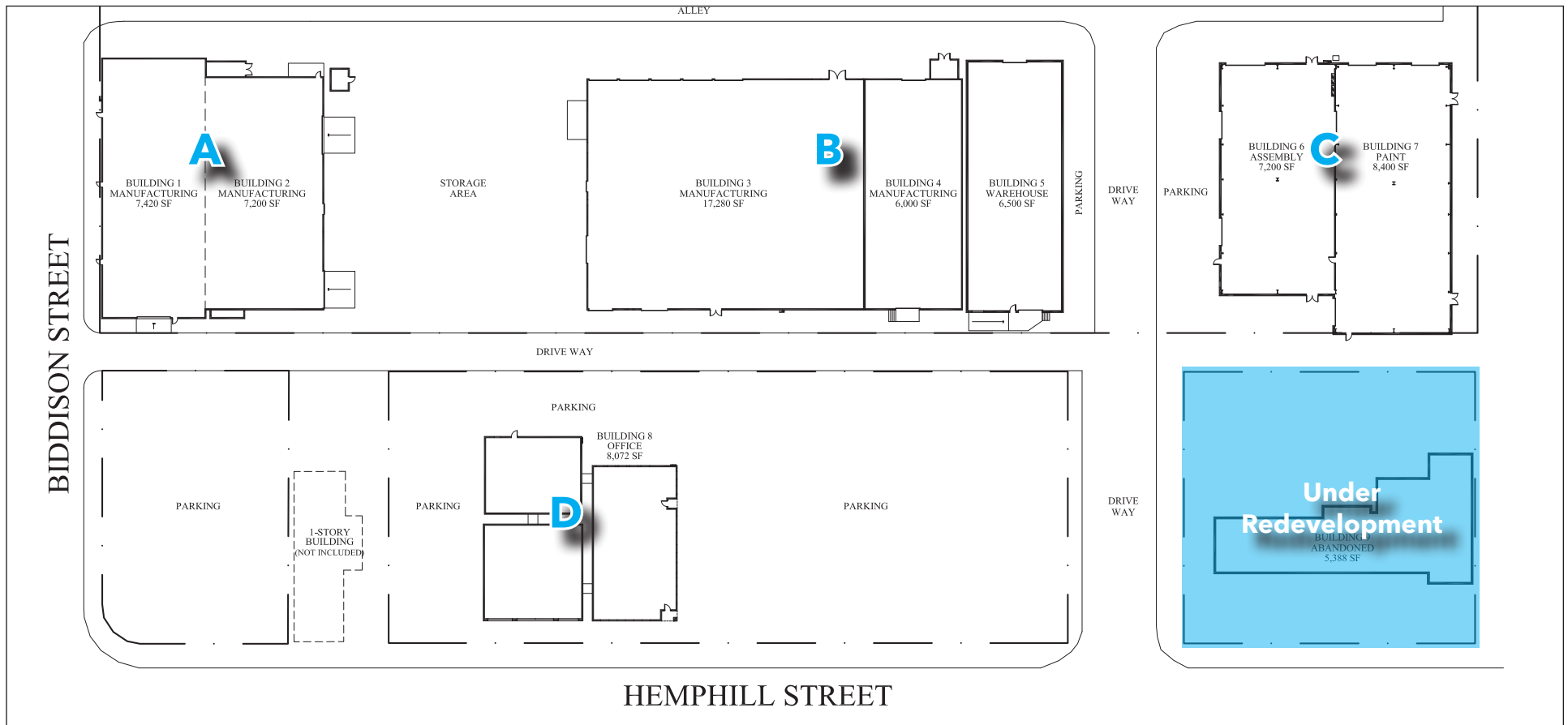


The information provided herein was obtained from sources believed reliable; however, Transwestern makes no guarantees, warranties or representations as to the completeness or accuracy thereof. The presentation of this property is submitted subject to errors, omissions, change of price or conditions, prior sale or lease, or withdrawal without notice. Copyright © 2017 Transwestern.

INDUSTRIAL/MANUFACTURING FOR LEASE OR SALE

HEMPHILL AVE INDUSTRIAL

14,600 SF - 68,072 SF | FORT WORTH, TEXAS 76110



CONTACT INFORMATION

JEFF GIVENS
817.259.3536
jeff.givens@transwestern.com

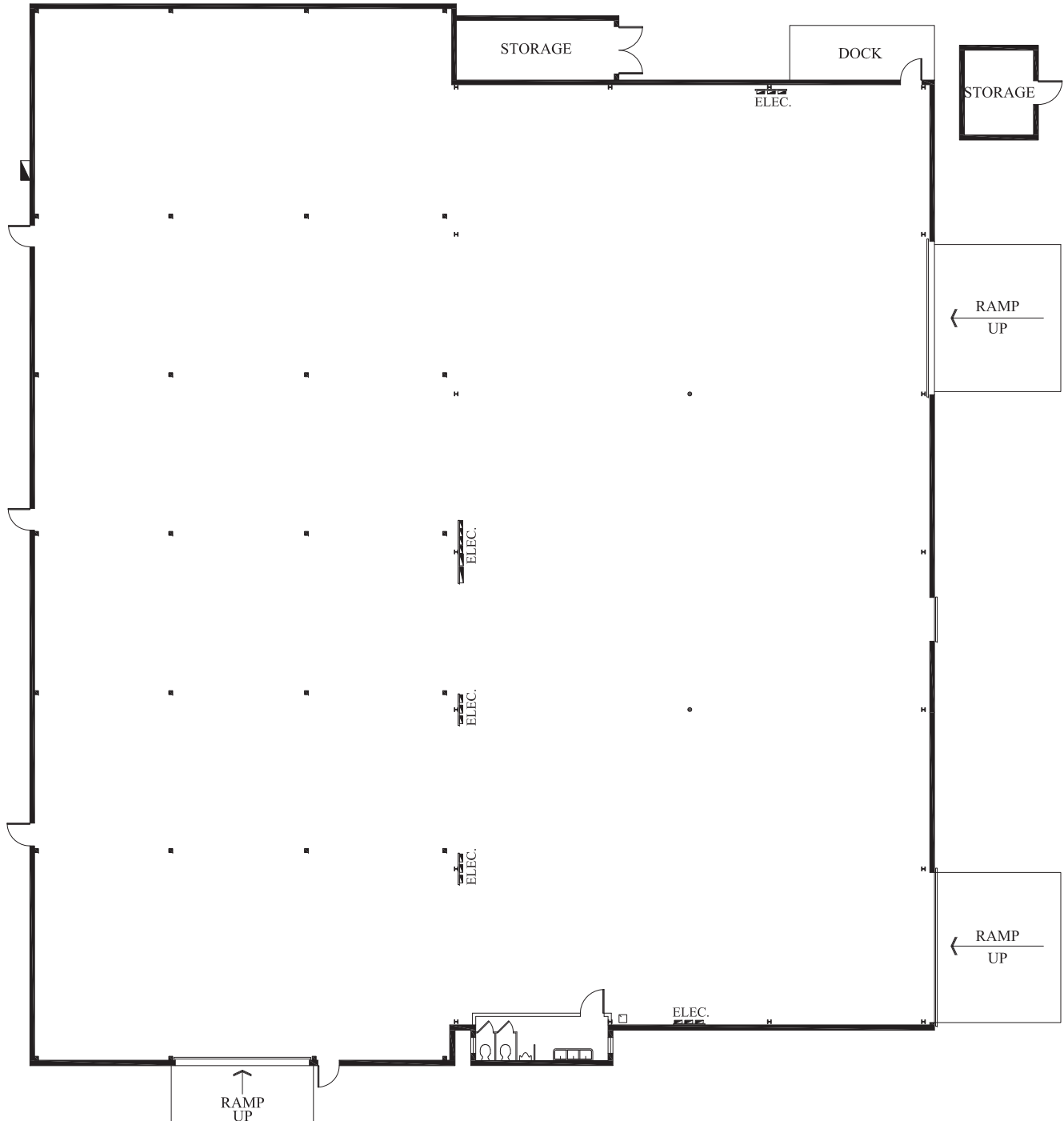


The information provided herein was obtained from sources believed reliable; however, Transwestern makes no guarantees, warranties or representations as to the completeness or accuracy thereof. The presentation of this property is submitted subject to errors, omissions, change of price or conditions, prior sale or lease, or withdrawal without notice. Copyright © 2017 Transwestern.

INDUSTRIAL/MANUFACTURING FOR LEASE OR SALE
HEMPHILL AVE INDUSTRIAL
BUILDING A | FORT WORTH, TEXAS 76110

3521 HEMPHILL STREET

3521 Hemphill Street, Fort Worth, Texas
BUILDINGS 1 & 2
MANUFACTURING SPACE
14,620 SF



INDUSTRIAL/MANUFACTURING FOR LEASE OR SALE

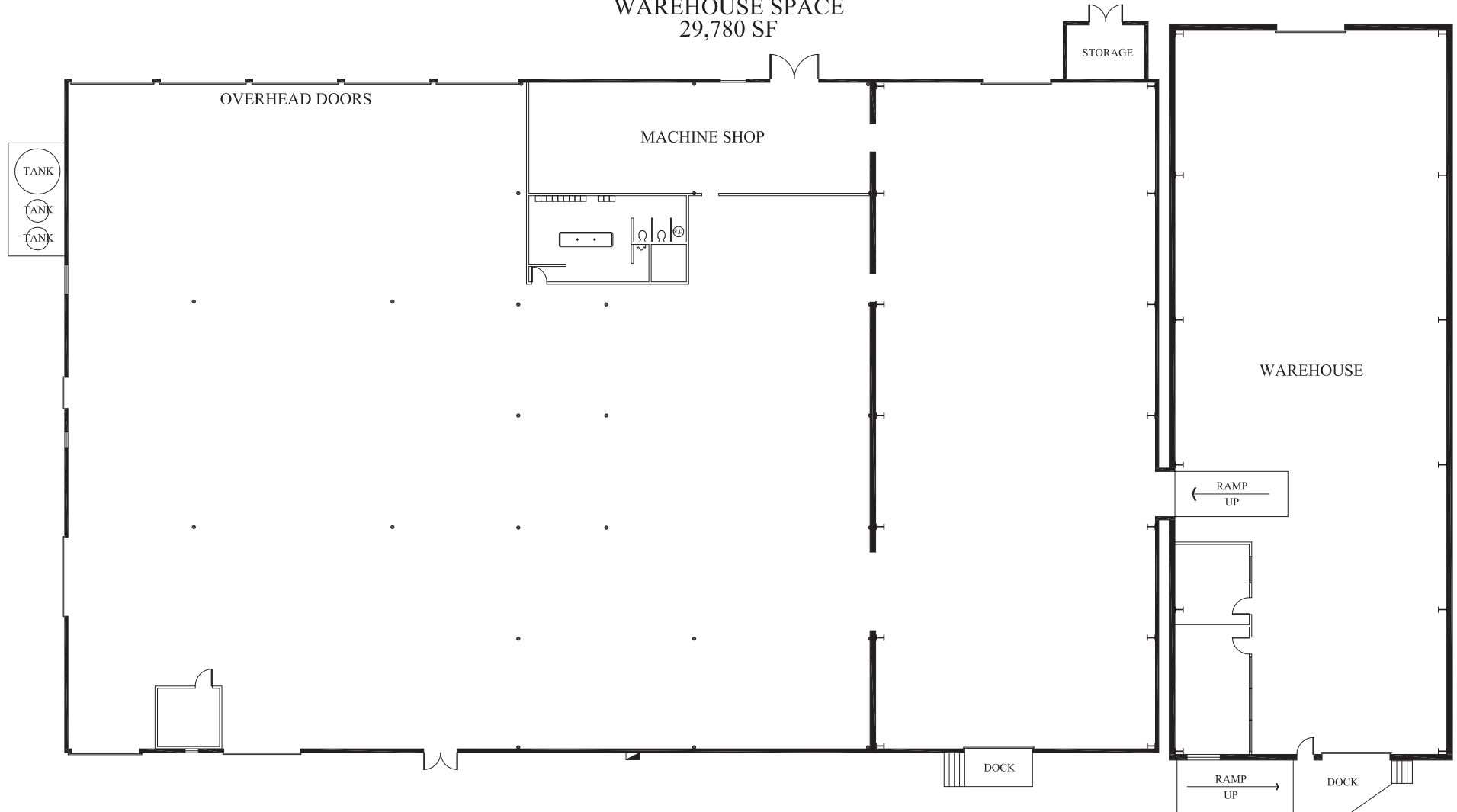
HEMPHILL AVE INDUSTRIAL

BUILDING B | FORT WORTH, TEXAS 76110

3521 HEMPHILL STREET

3521 Hemphill Street, Fort Worth, Texas

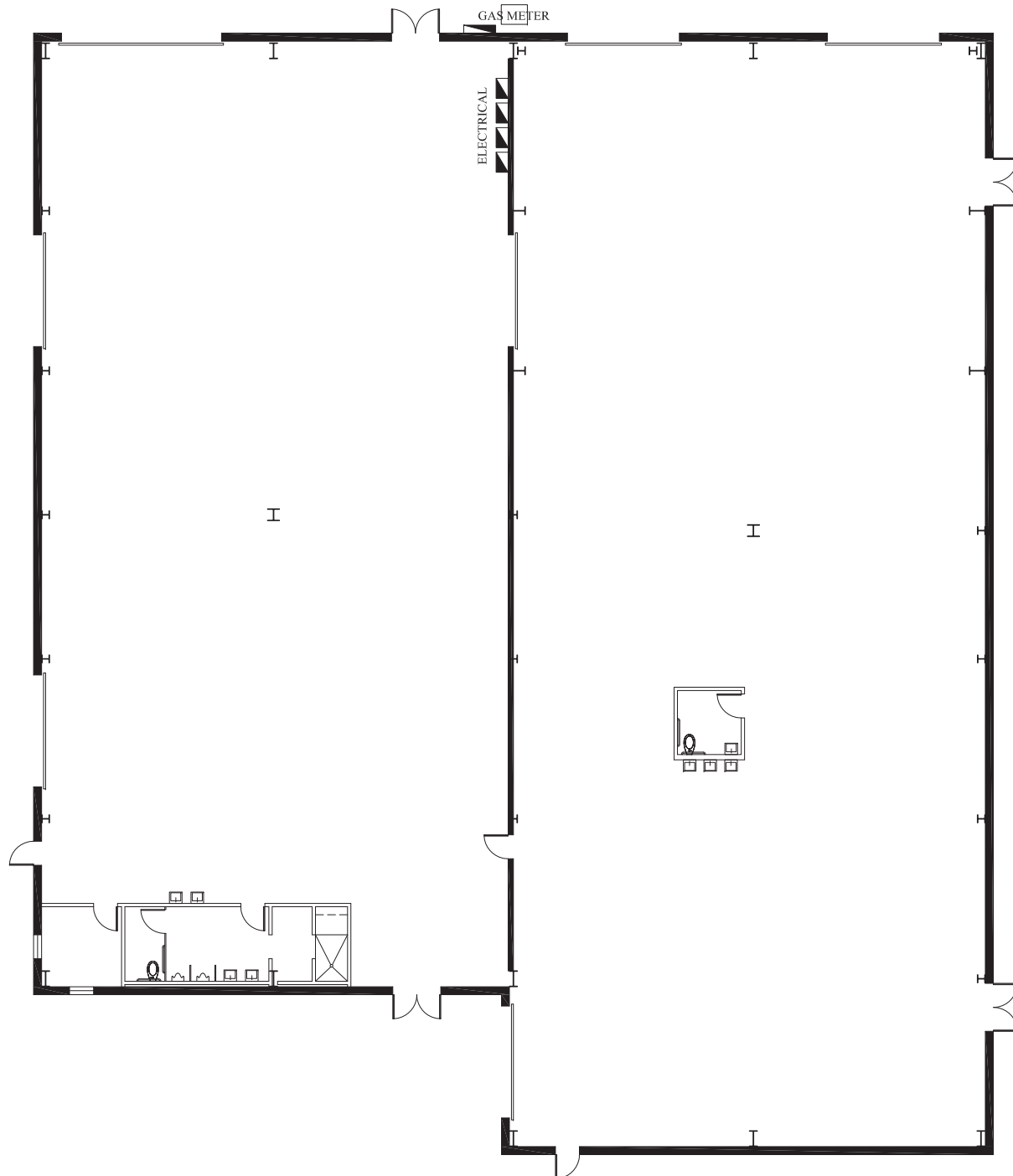
BUILDINGS 3, 4 & 5
MANUFACTURING SPACE &
WAREHOUSE SPACE
29,780 SF



INDUSTRIAL/MANUFACTURING FOR LEASE OR SALE
HEMPHILL AVE INDUSTRIAL
BUILDING C | FORT WORTH, TEXAS 76110

3521 HEMPHILL STREET

3521 Hemphill Street, Fort Worth, Texas
BUILDINGS 6 & 7
MANUFACTURING SPACE
15,600 SF



INDUSTRIAL/MANUFACTURING FOR LEASE OR SALE
HEMPHILL AVE INDUSTRIAL
BUILDING D | FORT WORTH, TEXAS 76110

3521 HEMPHILL STREET

3521 Hemphill Street, Fort Worth, Texas

BUILDING 8
OFFICE SPACE
8,072 RSF

