

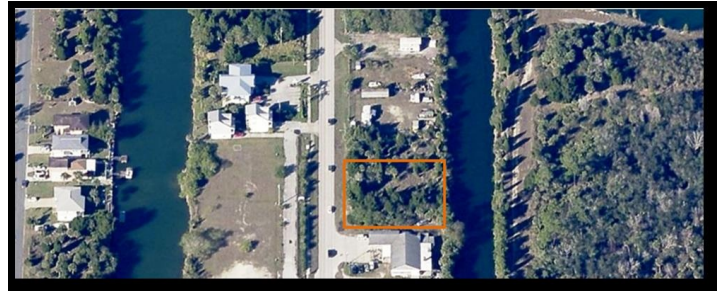
Hernando Beach Commercial Land

Shoal Line Blvd. , Spring Hill, FL 34608



NRT

Listing ID: 29711491
Status: Active
Property Type: Vacant Land For Sale
Possible Uses: Office, Retail
Gross Land Area: 18,176 SF
Sale Price: \$90,000
Unit Price: \$4.95 PSF
Sale Terms: Cash to Seller



Property Overview

Centrally located in Florida, near Tampa. Beautiful boating and recreational area, six minutes from Weeki Wachee river hub. Growing community, expanding with planned waterfront condominium project across street. New middle school completed 2010. Sits on an important north-south corridor with canal behind. Adjacent lot available.

More Information Online

<http://www.fgcar.org/listing/29711491>

QR Code

Scan this image with your mobile device:



Listing Details

General Information

Listing Name:	Hernando Beach Commercial Land	Adjacent Parcels Available:	Yes
Possible Uses:	Office, Retail, Retail-Pad, Self Storage	Sale Terms:	Cash to Seller
Zoning:	VACANT COMMERCIAL		

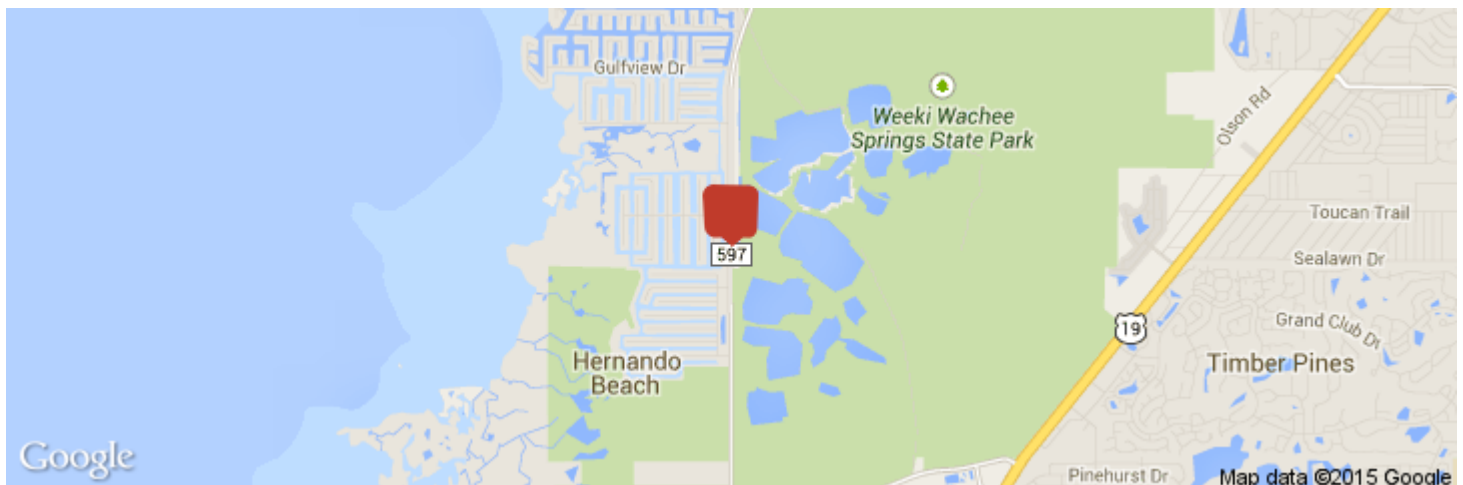
Area & Location

Property Visibility: Excellent

Legal Description Parcel # R12 223 16 2050 1040 0020 & R12 223 16 2050 1040 0030 Gulf Coast RET Unit B Blk 104 Lot 2 & Gulf Coast RET Unit B Blk 104 Lot 3

Location

Address: Shoal Line Blvd. , Spring Hill, FL 34608
County: Hernando
MSA: Tampa-St. Petersburg-Clearwater



Property Contacts



Cindy Herbeck

Coldwell Banker Commercial NRT

727-773-5012 [M]

813-769-2964 [O]

cindy.herbeck@flcomml.com