

LDN:W

NOBLE STREET EC2

112,870 SQ FT
GRADE A OFFICES
COMMUNAL ROOF TERRACE AND
PRIVATE TERRACES ON 4 FLOORS



LDN:W
NOBLE STREET EC2

A CONTEMPORARY ARRIVAL EXPERIENCE

LDN:W will benefit from a new contemporary arrival experience. The new entrance and surrounding glazed façade gives a real sense of landmark building status.





WELCOME TO LDN:W

The new reception area will feel both sophisticated and welcoming to employees and guests alike. With a boutique café and seating area.



Summary specification

- Shared 2,745 sq ft roof terrace on the 12th floor
- Occupational density - 1:8 sq m
- Four pipe fan coil air conditioning
- Floor to ceiling height - 2,700mm (Lower ground - 11th floor)
- Double height reception - 6,400mm
- Contemporary exposed services
- Private terraces on levels 7 to 11
- Male, female and disabled WCs in main core on every floor
- 144 Cycle Spaces
- Basement lockers
- 7 male and 7 female showers
- 1 x unisex/disabled WC and Showers
- BREEAM targeting 'Excellent'

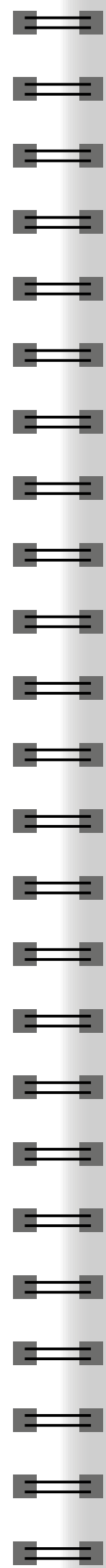
INTERIOR FINISHES*

* indicative images





12th Floor Roof Terrace



View towards St Pauls from Roof Terrace

- BT
- COMMERZBANK
- Milbank
- wework
- LLOYDS BANK
- Hill+Knowlton Strategies
- Schroders
- Standard Chartered Here for good
- Julius Bär
- MINTEL
- mimecast
- amazon.co.uk
- Investec
- Deloitte Digital
- BNY MELLON



LOCATION

The building's location benefits from the best of the traditional City amenity offering combined with all that is new and bold from Farringdon and Barbican.



RESTAURANTS & BARS

- | | |
|-------------------|------------------------|
| Manicomio | Paternoster Chop House |
| Hawksmoor | The Jugged Hare |
| The Anthologist | Pham Sushi |
| The Trading House | City Caphe |
| Club Gascon | Natural Kitchen |
| Barbecoa | |
| Coppa Club | |



HOTELS

- | | |
|------------------------|-------------------------------|
| The Ned | The Zetter Hotel (Farringdon) |
| Grange St Paul's Hotel | Malmaison |
| South Place Hotel | The Rookery |
| Apex London Wall Hotel | The Montcalm at the Brewery |

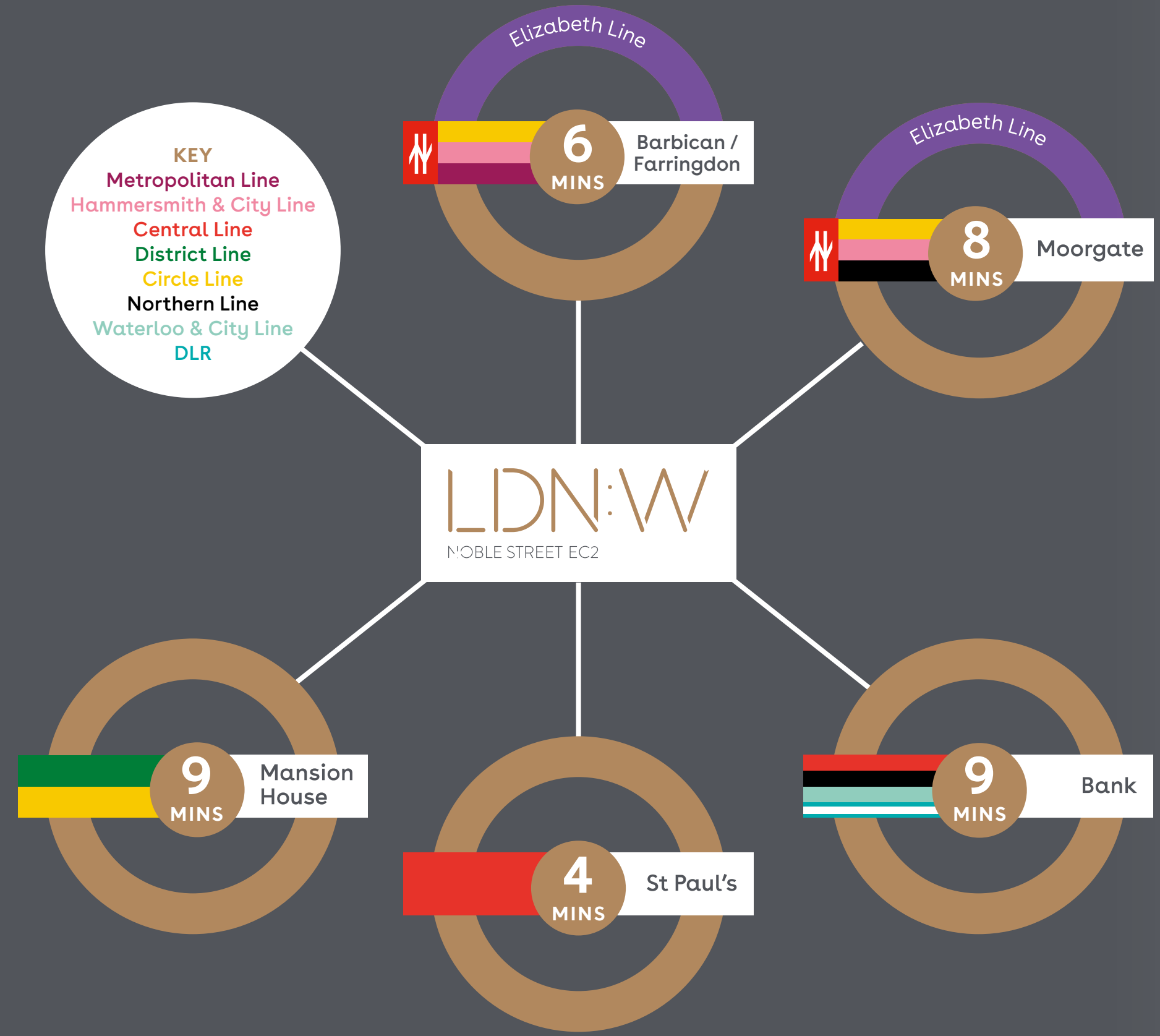


RETAIL & LEISURE

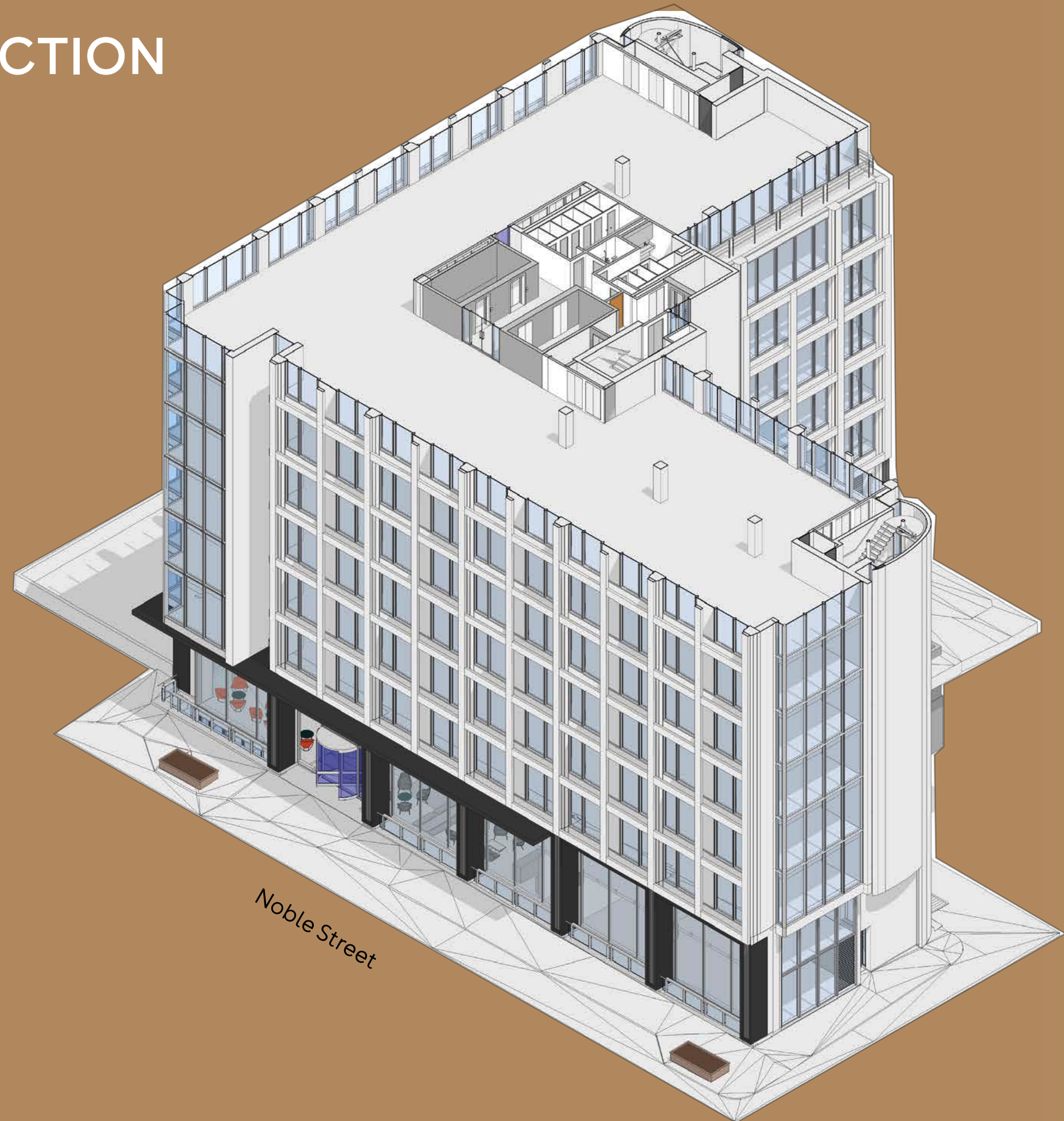
- | | |
|----------------|--------------------|
| One New Change | Kobox |
| Royal Exchange | Paternoster Square |
| Gym Box | Bupa |
| Virgin Active | |



CONNECTIONS



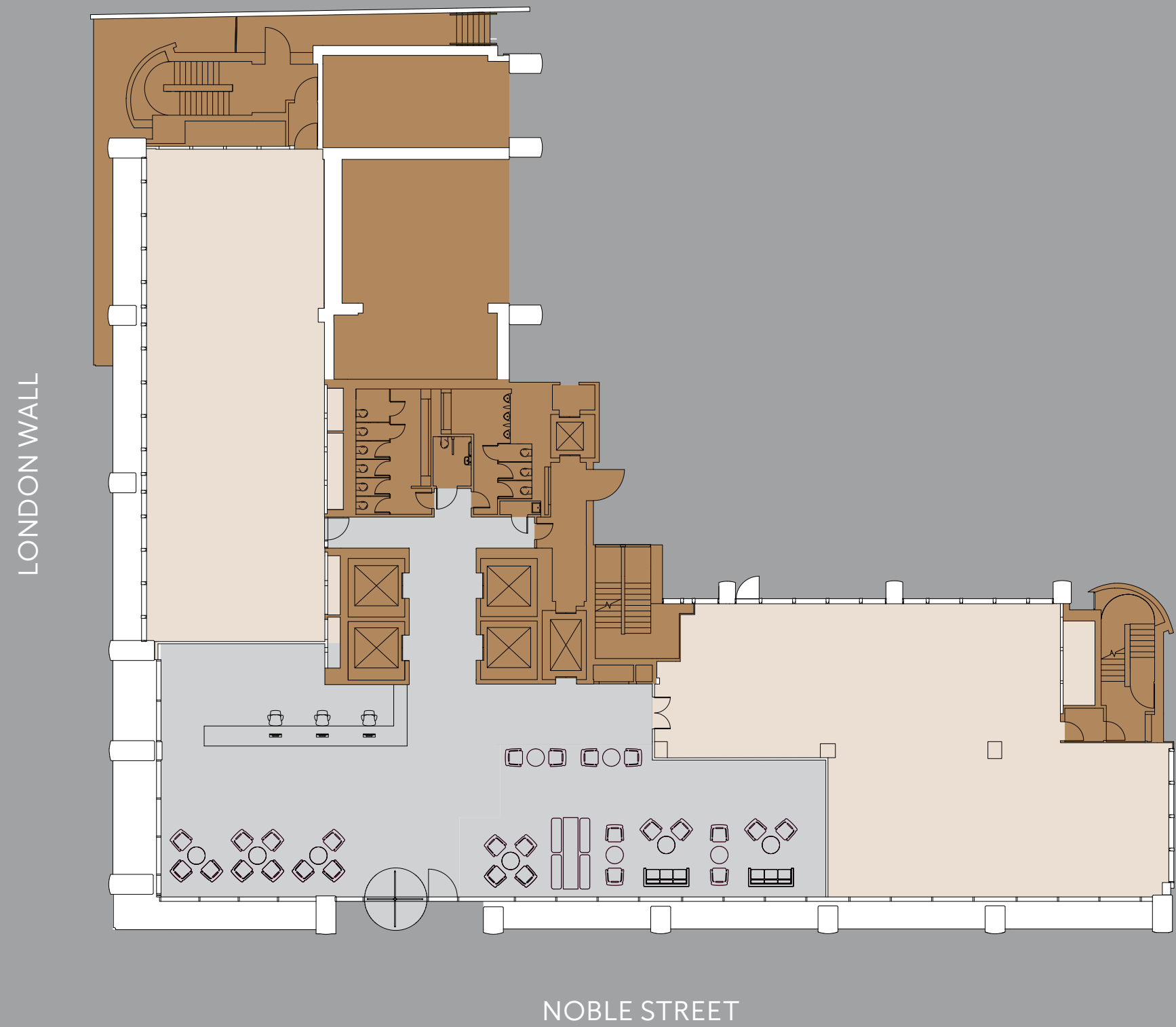
CROSS SECTION



THE BUILDING

Floor	sq ft	Terrace sq ft
12th Floor Roof Terrace	—	2,745
11	6,921	205
10	8,041	205
9	8,977	215
8	9,246	215
7	9,526	215
6	9,795	
5	9,795	
4	9,774	
3	9,806	
2	9,784	
1	6,082	
G	4,155	
LG Office	7,578	
LG Storage	2,669	
Basement (Storage)	721	
Total	112,870	3,800

FLOOR PLANS

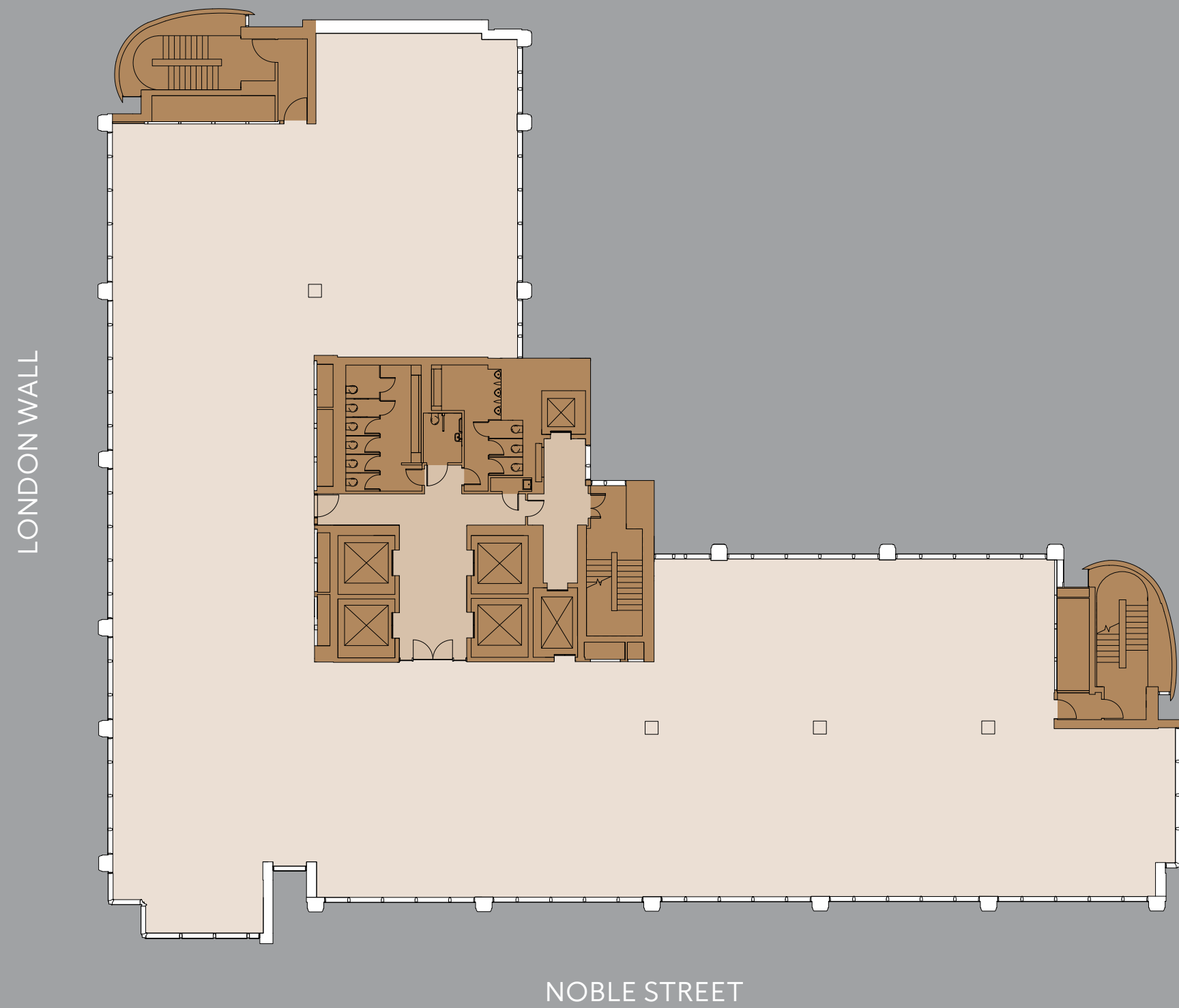


GROUND FLOOR
4,155 SQ FT (386 SQ M)

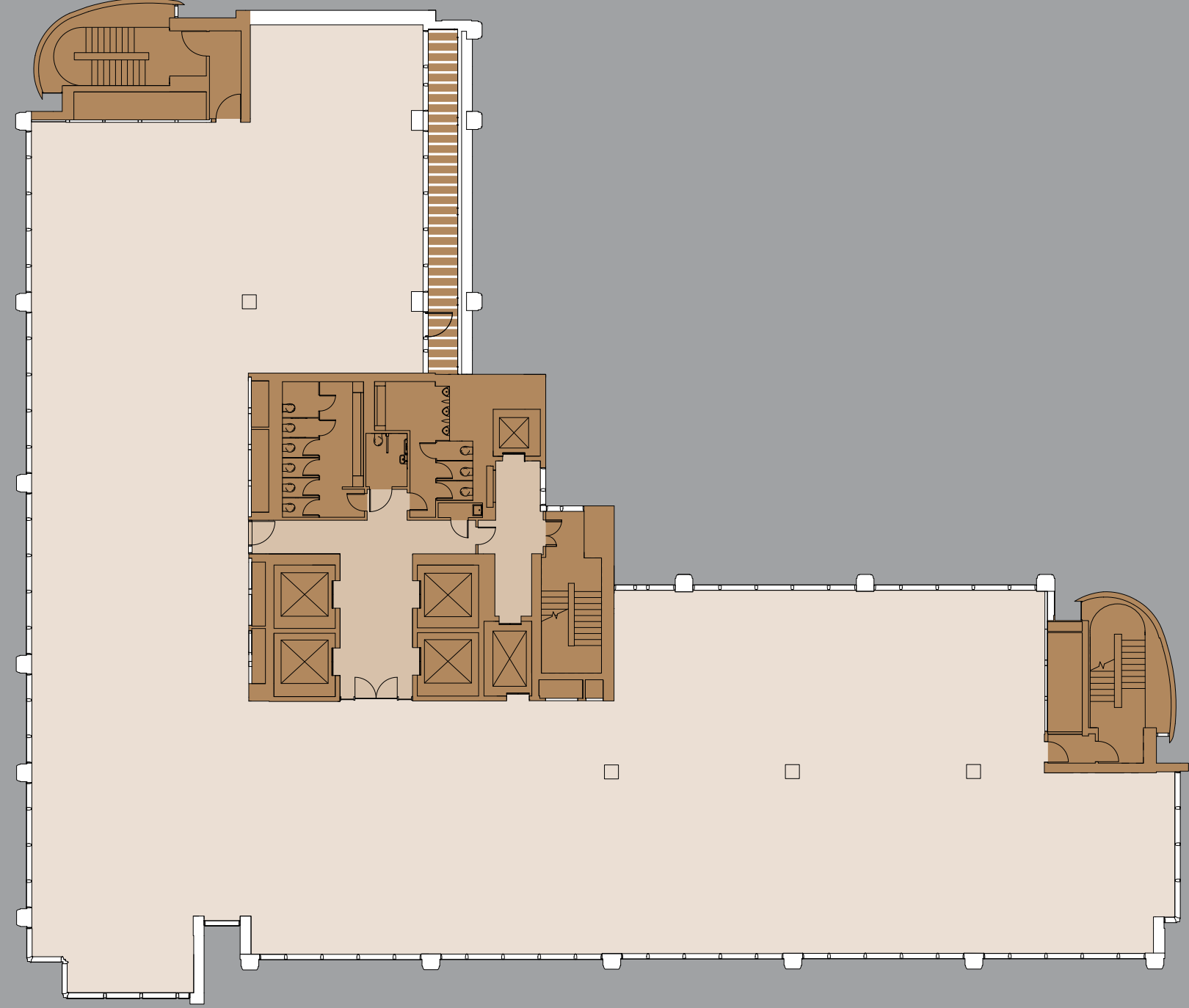


TYPICAL LOWER FLOOR (FLOORS 2 - 6)
9,795 SQ FT (910 SQ M)

Not to scale, for indicative purposes only.



LONDON WALL



NOBLE STREET

SEVENTH FLOOR

9,526 SQ FT (885 SQ M)



TERRACE

215 SQ FT (19.9 SQ M)

N



9,246 SQ FT (859 SQ M)



TERRACE

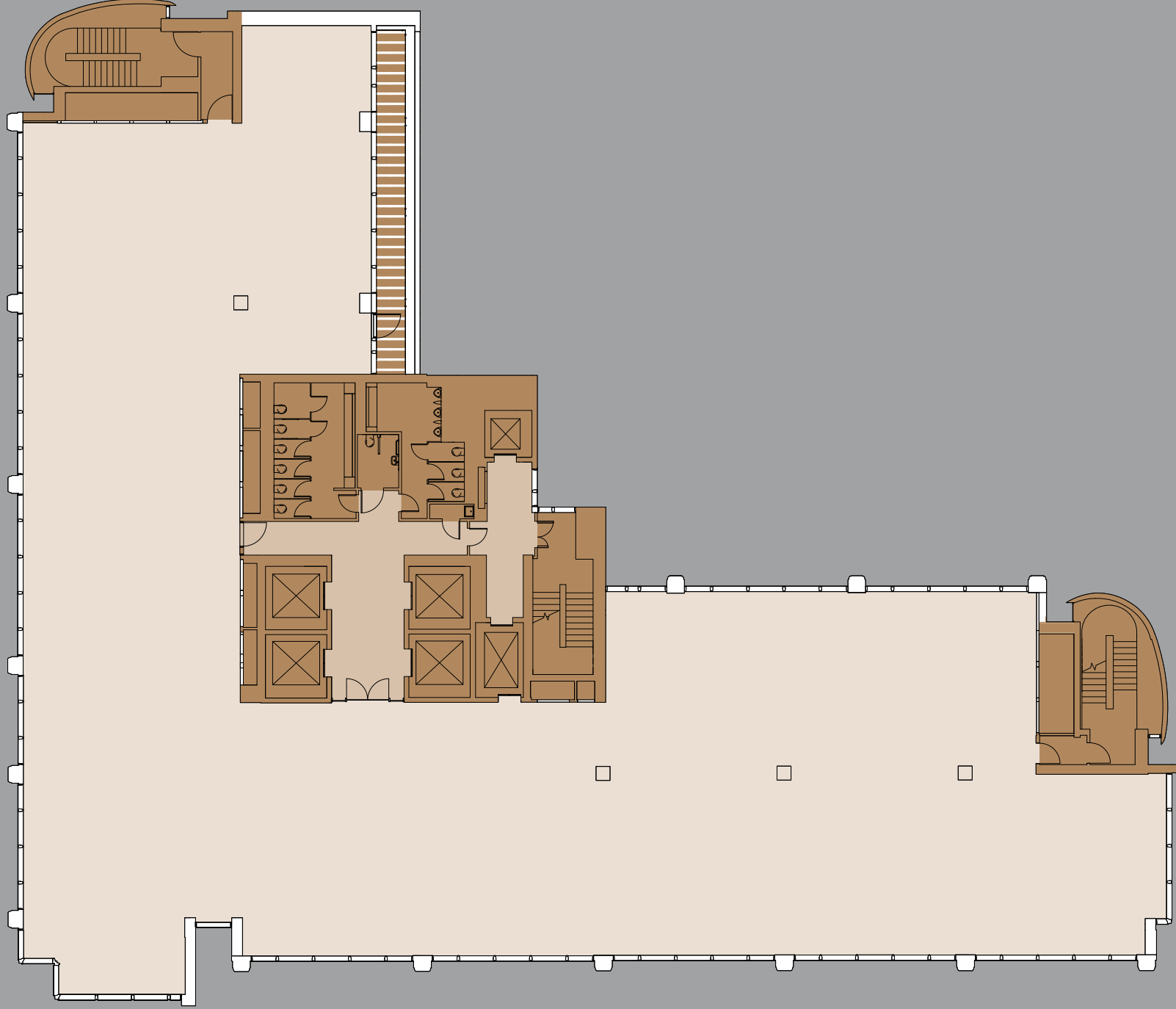
215 SQ FT (19.9 SQ M)

EIGHTH FLOOR

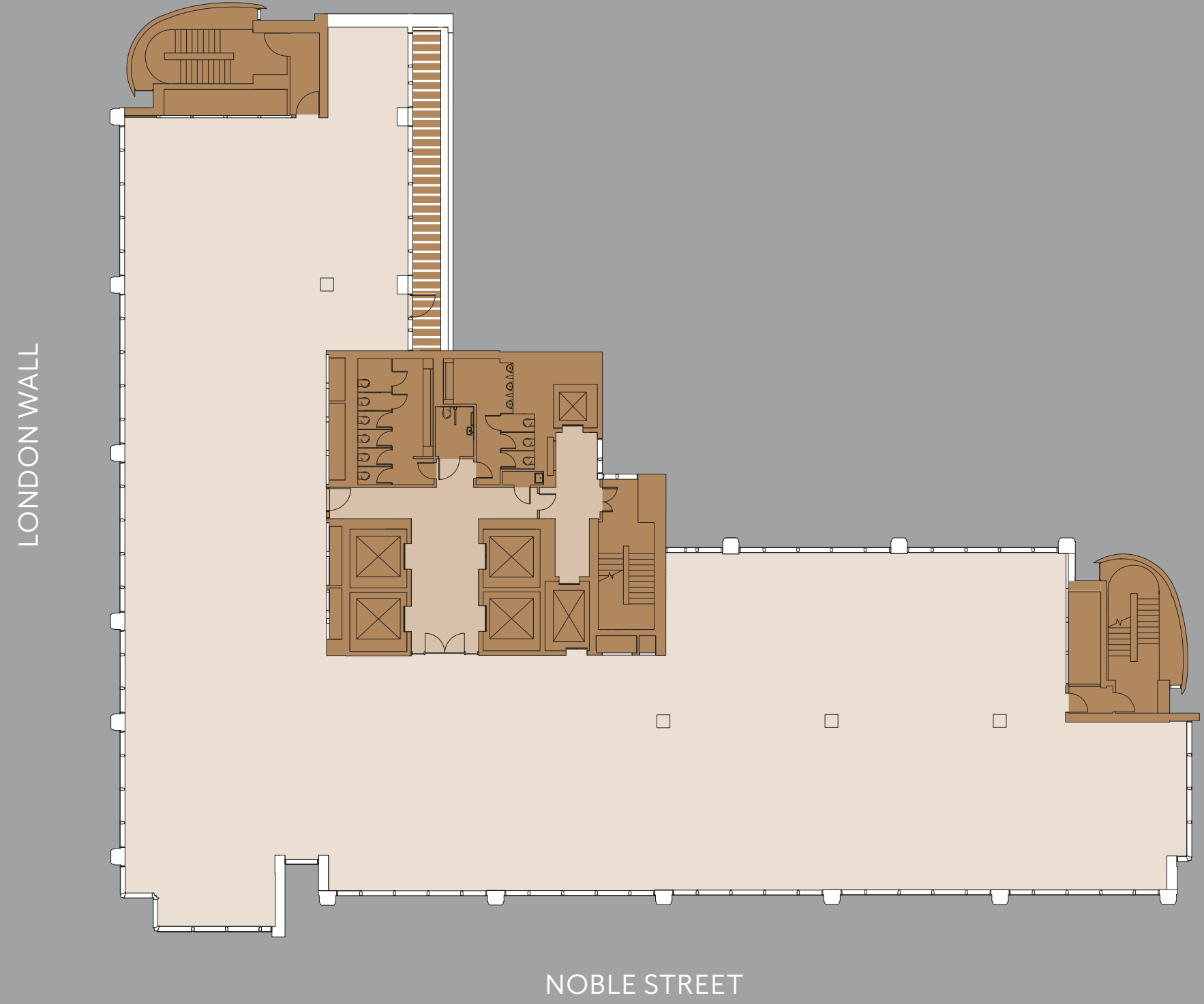
Not to scale, for indicative purposes only.



LONDON WALL



NOBLE STREET



NINTH FLOOR

8,977 SQ FT (834 SQ M)



TERRACE

215 SQ FT (19.9 SQ M)

N



TENTH FLOOR

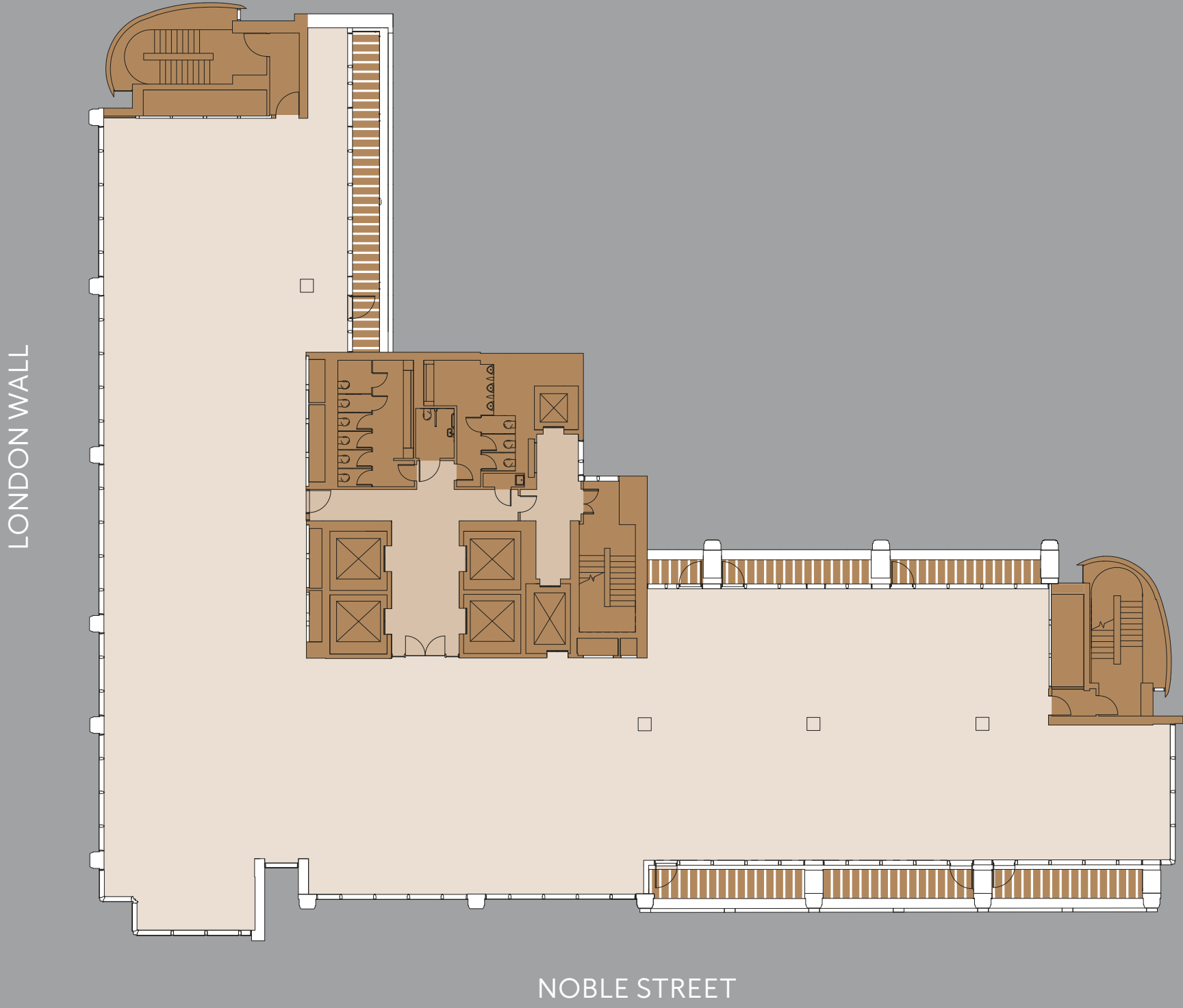
8,041 SQ FT (747 SQ M)



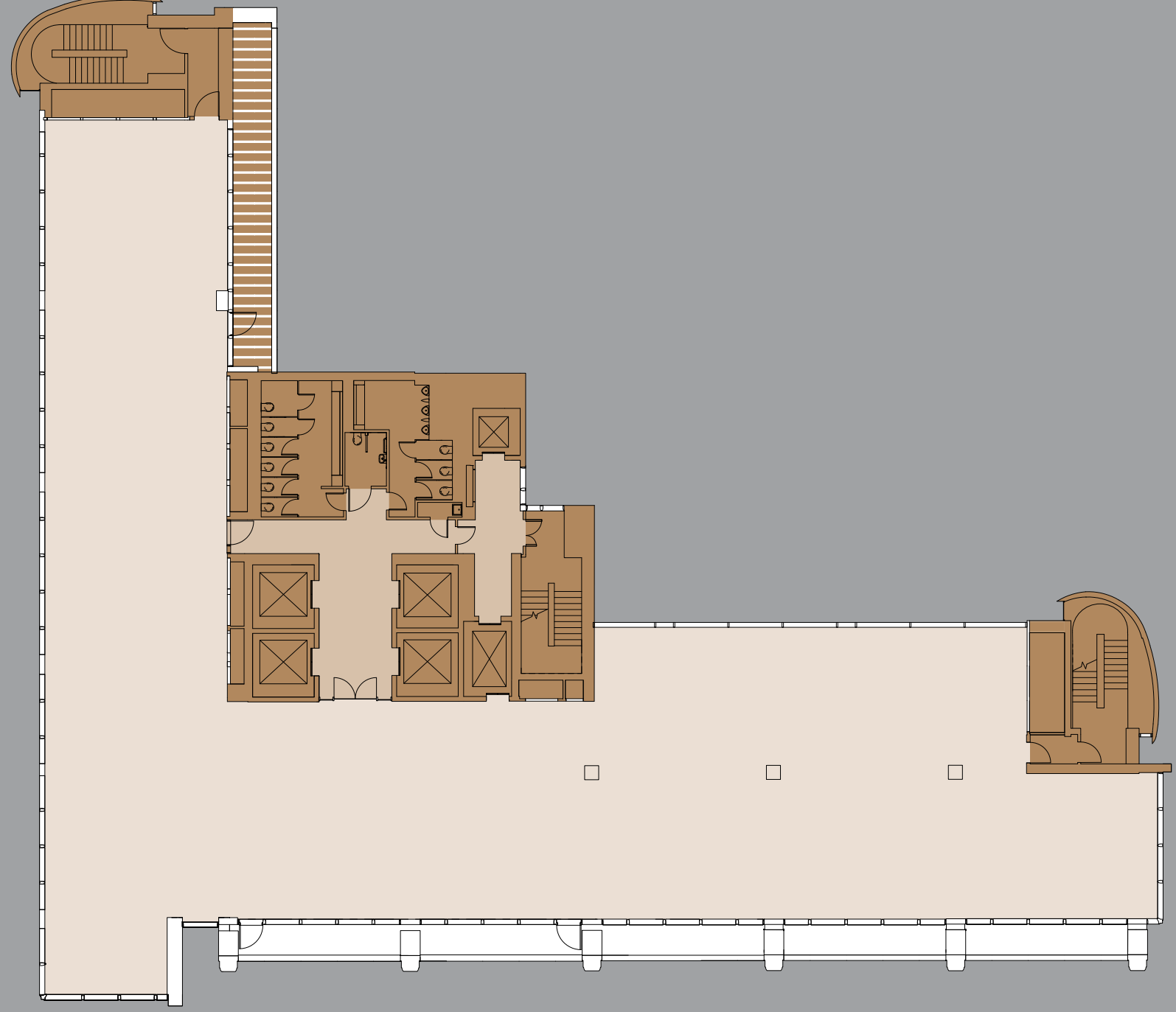
TERRACE

205 SQ FT (19 SQ M)

Not to scale, for indicative purposes only.



LONDON WALL



NOBLE STREET

ELEVENTH FLOOR

6,921 SQ FT (643 SQ M)



TERRACE
205 SQ FT (19 SQ M)

N

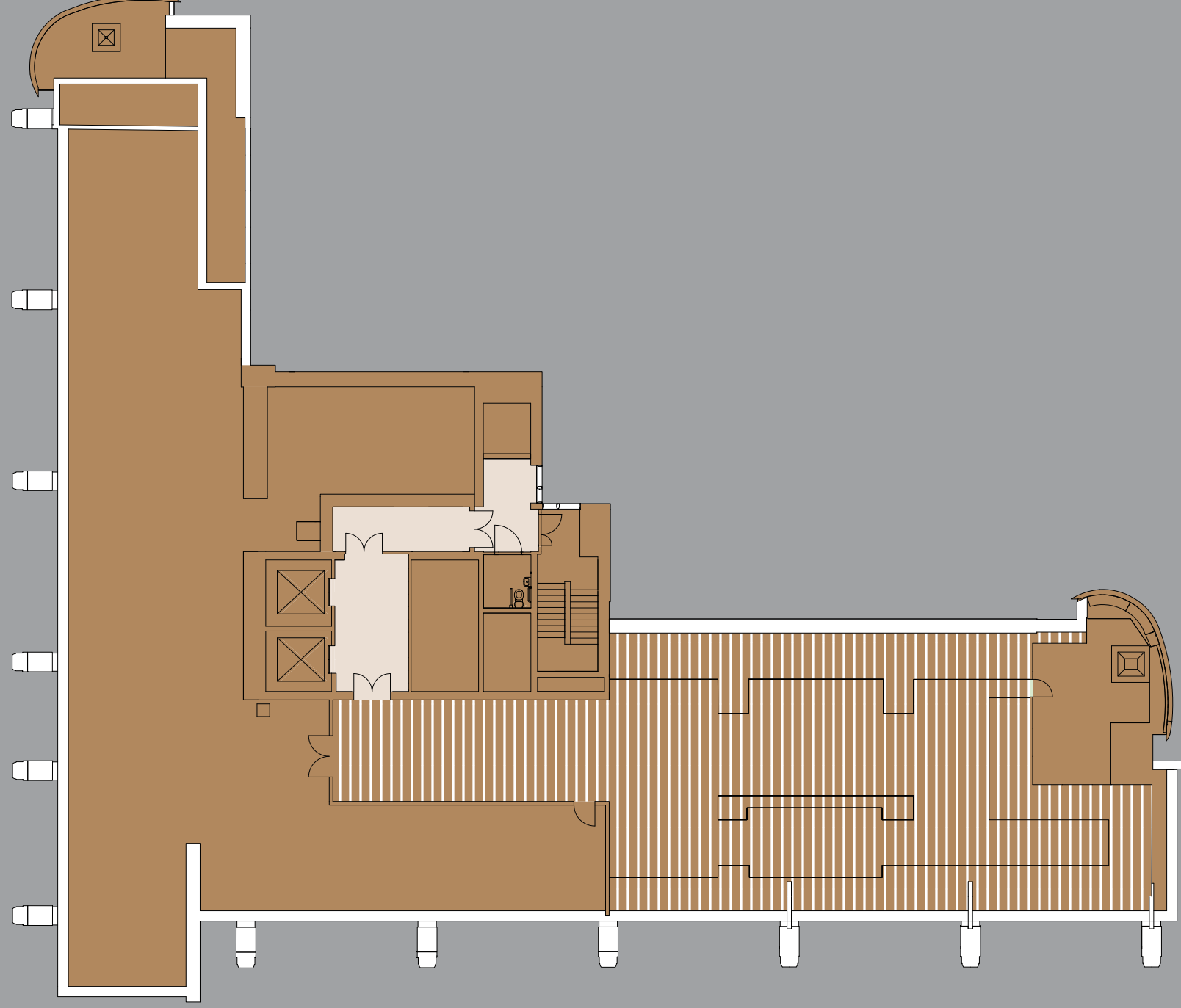


TWELFTH FLOOR

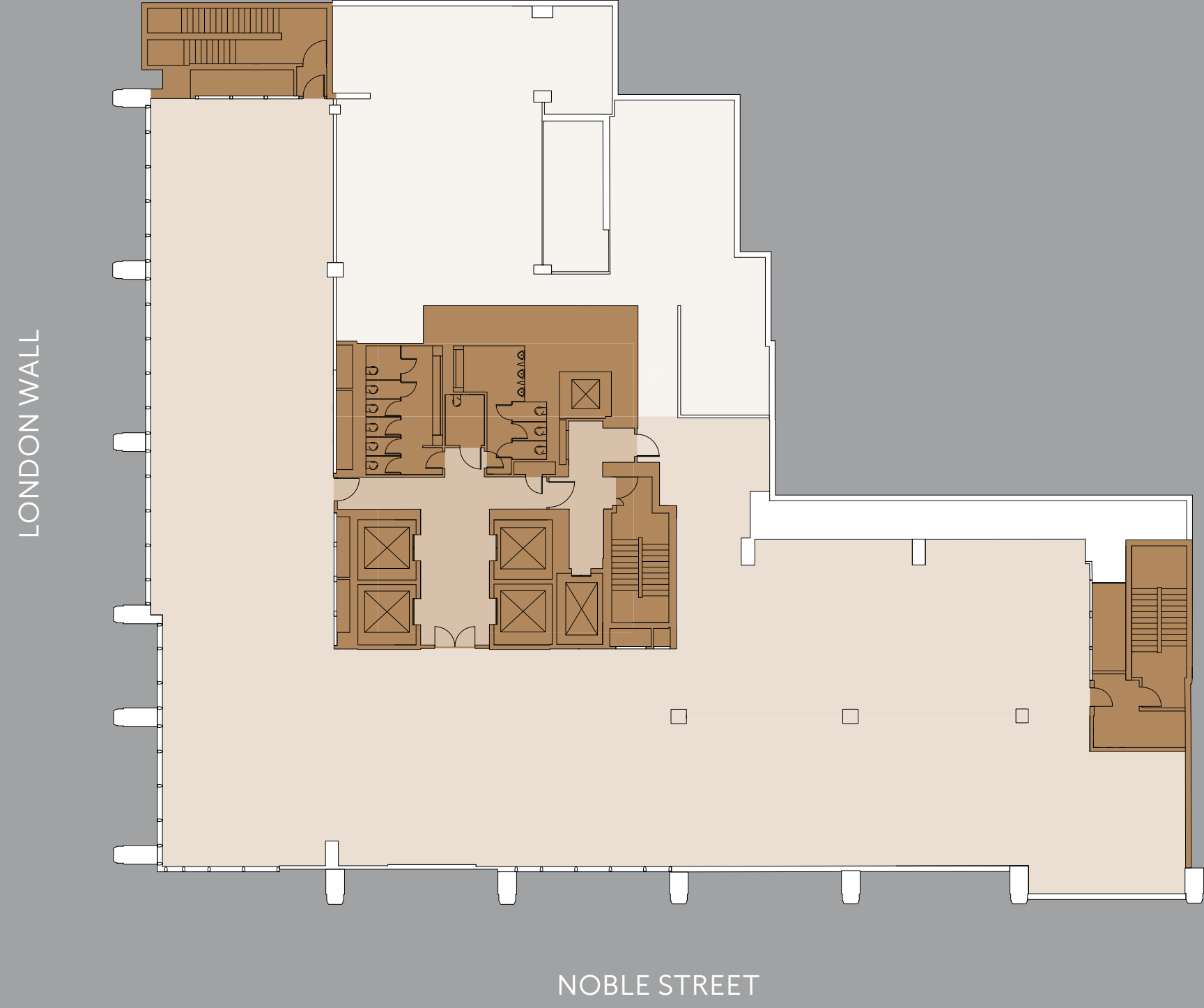
ROOF TERRACE: 2,745 SQ FT (225 SQ M)

Not to scale, for indicative purposes only.

LONDON WALL



NOBLE STREET



LOWER GROUND FLOOR

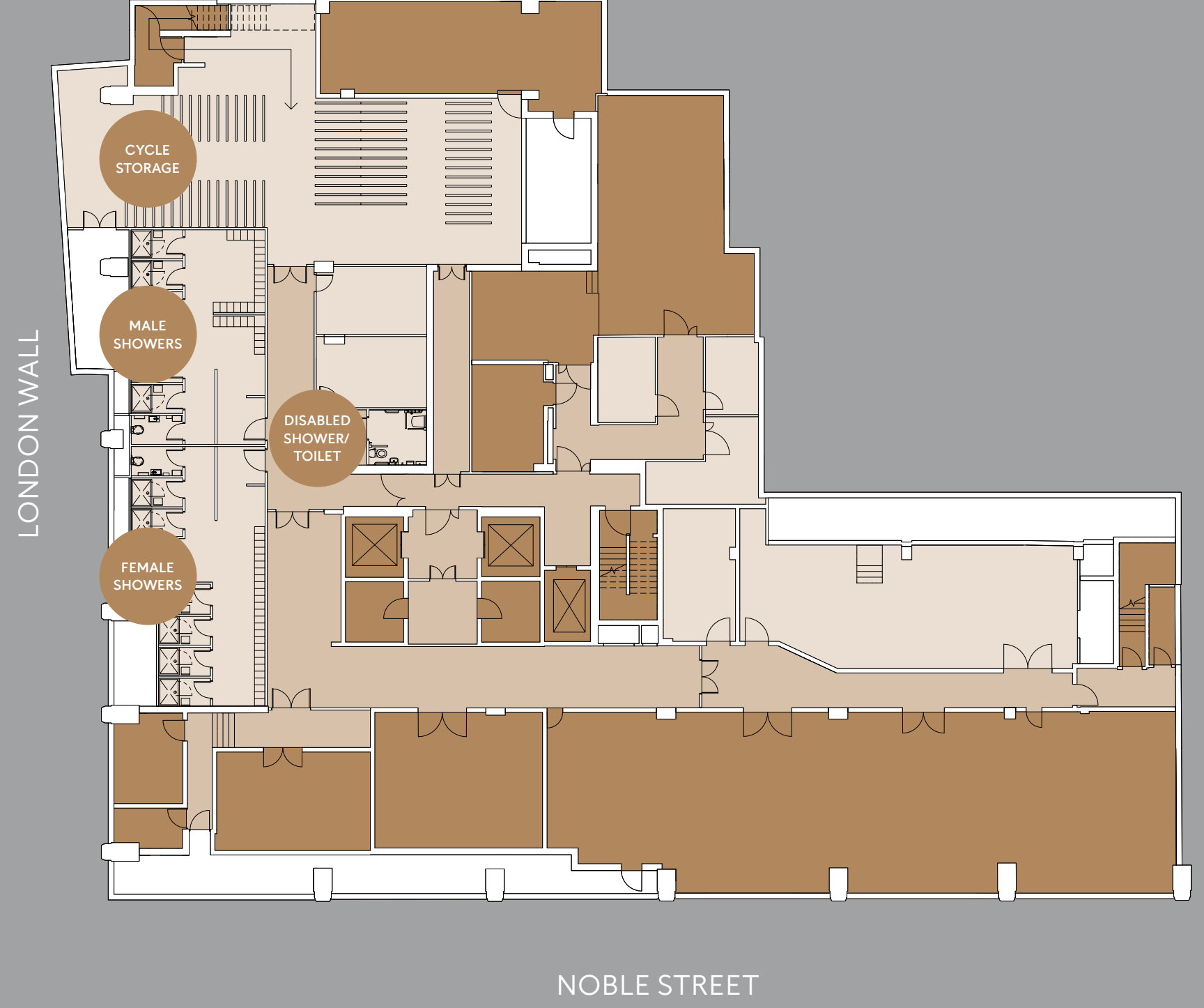
OFFICE: 7,578 SQ FT (704 SQ M)

STORAGE: 2,669 SQ FT (248 SQ M)

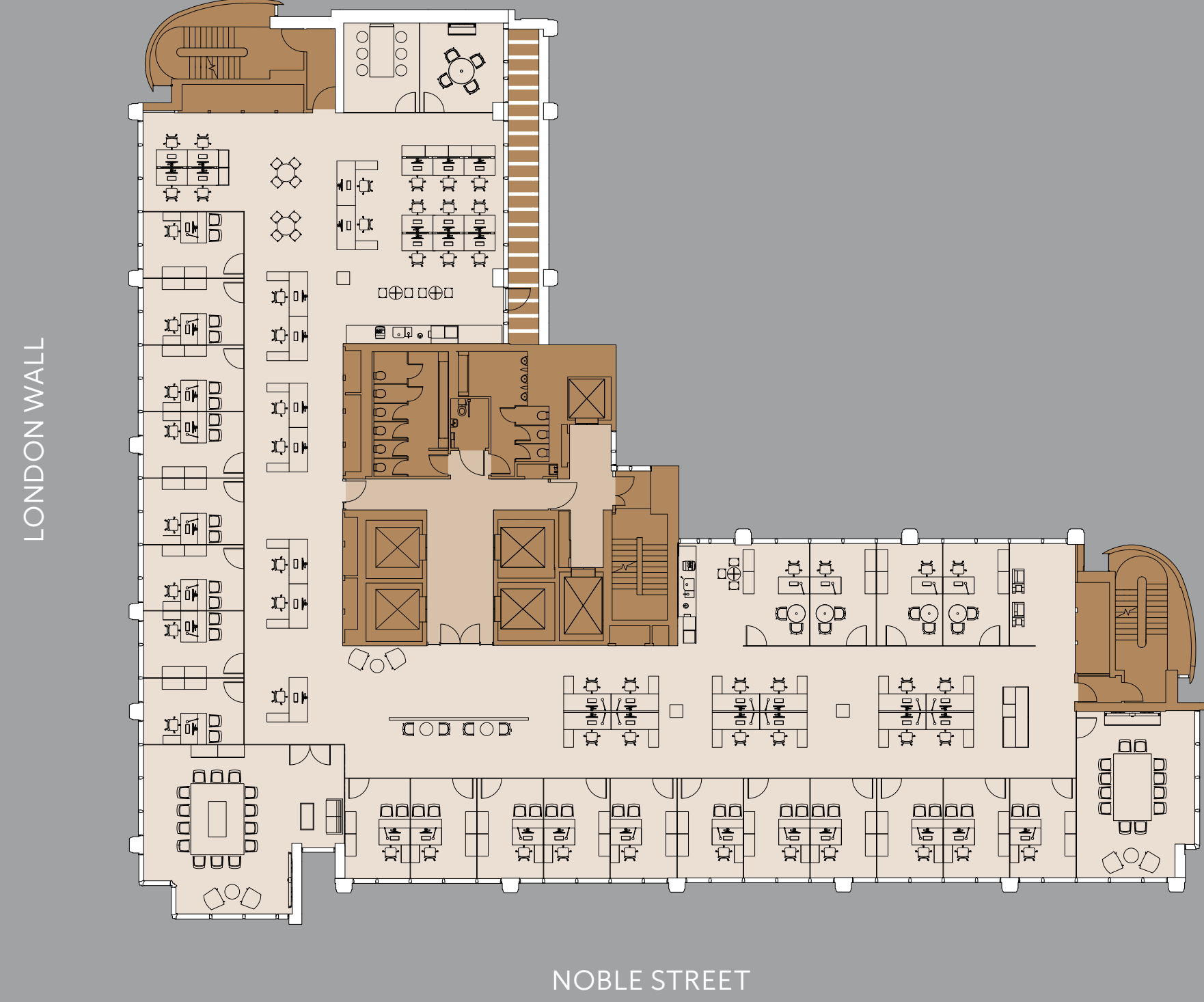


BASEMENT
STORAGE: 1,173 SQ FT (109 SQ M)

Not to scale, for indicative purposes only.

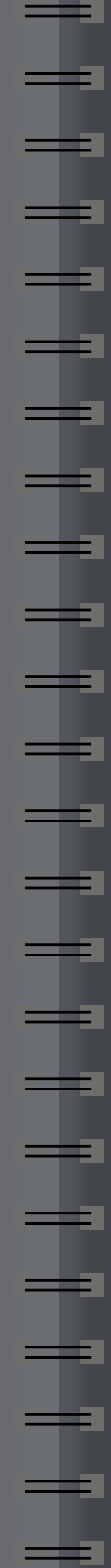


SPACE PLANS



US LEGAL 12
24
3
1

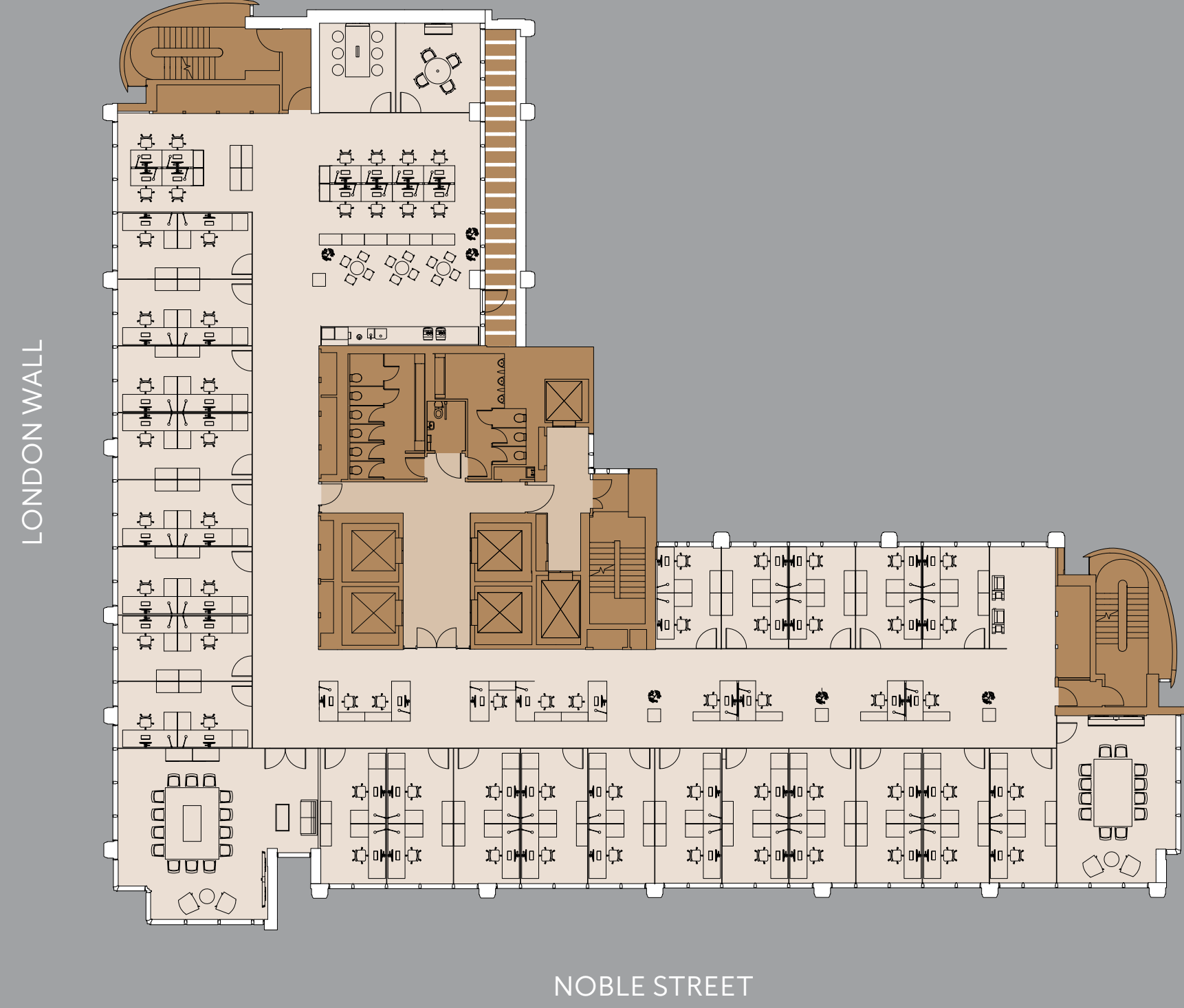
OPEN PLAN DESKS
PRIVATE OFFICES
MEETING ROOMS
BREAKOUT ROOM



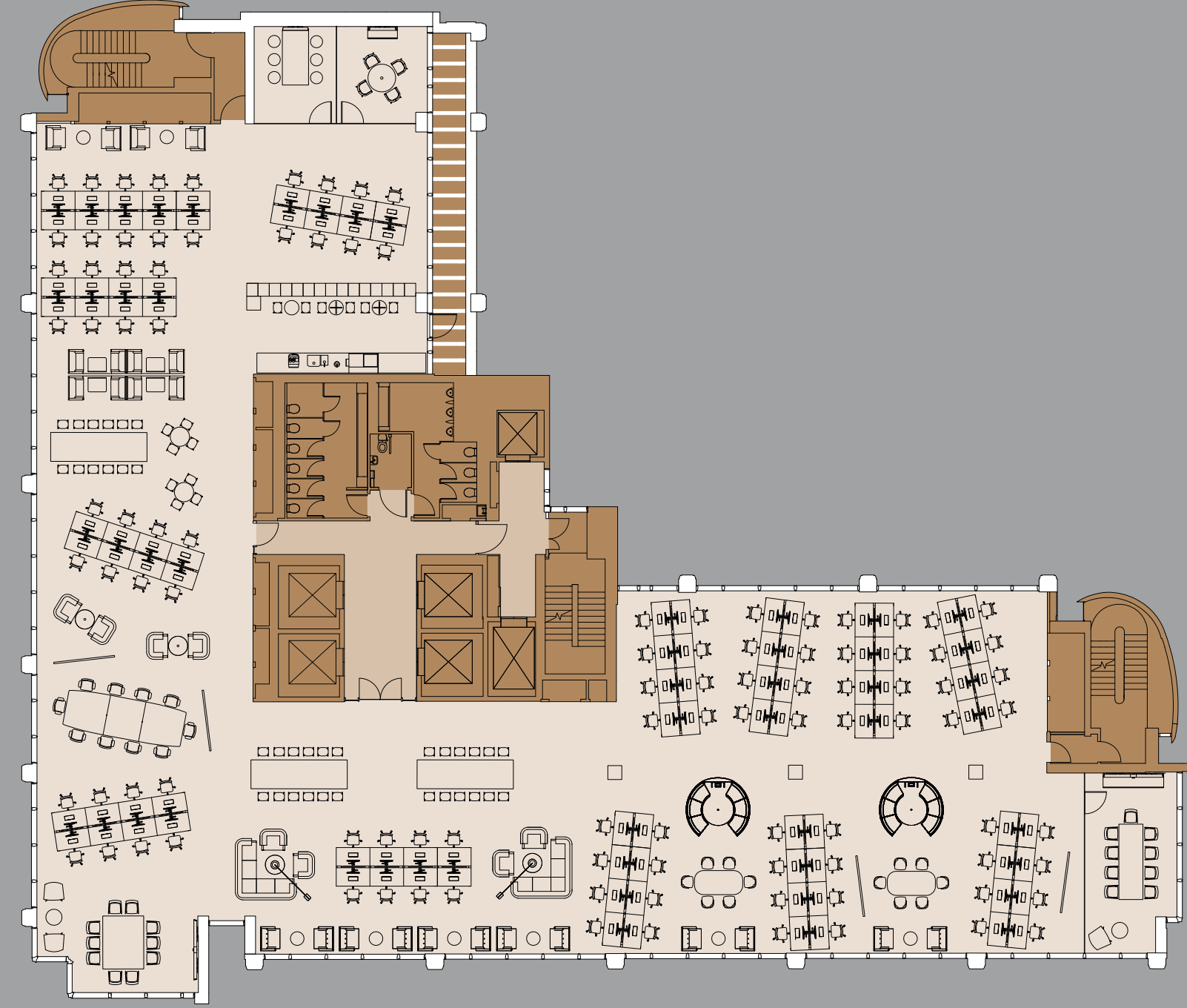
UK LEGAL

27
23
3
1

OPEN PLAN DESKS
PRIVATE OFFICES
MEETING ROOMS
BREAKOUT ROOM



LONDON WALL



NOBLE STREET

TMT

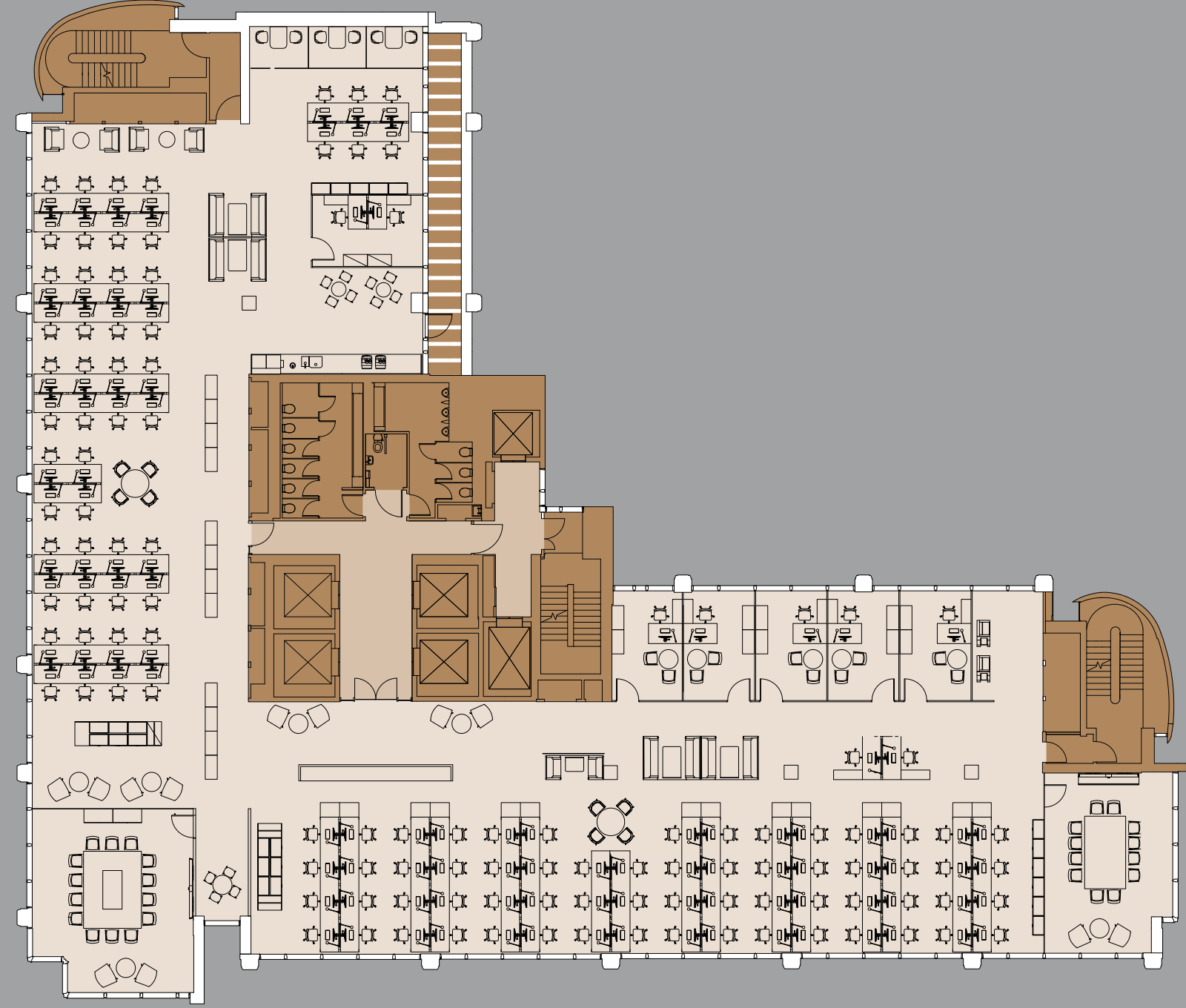
- 84 OPEN PLAN DESKS
- 12 CASUAL MEETING ROOM TABLES
- 3 MEETING ROOMS
- 1 BREAKOUT ROOM



FINANCIAL

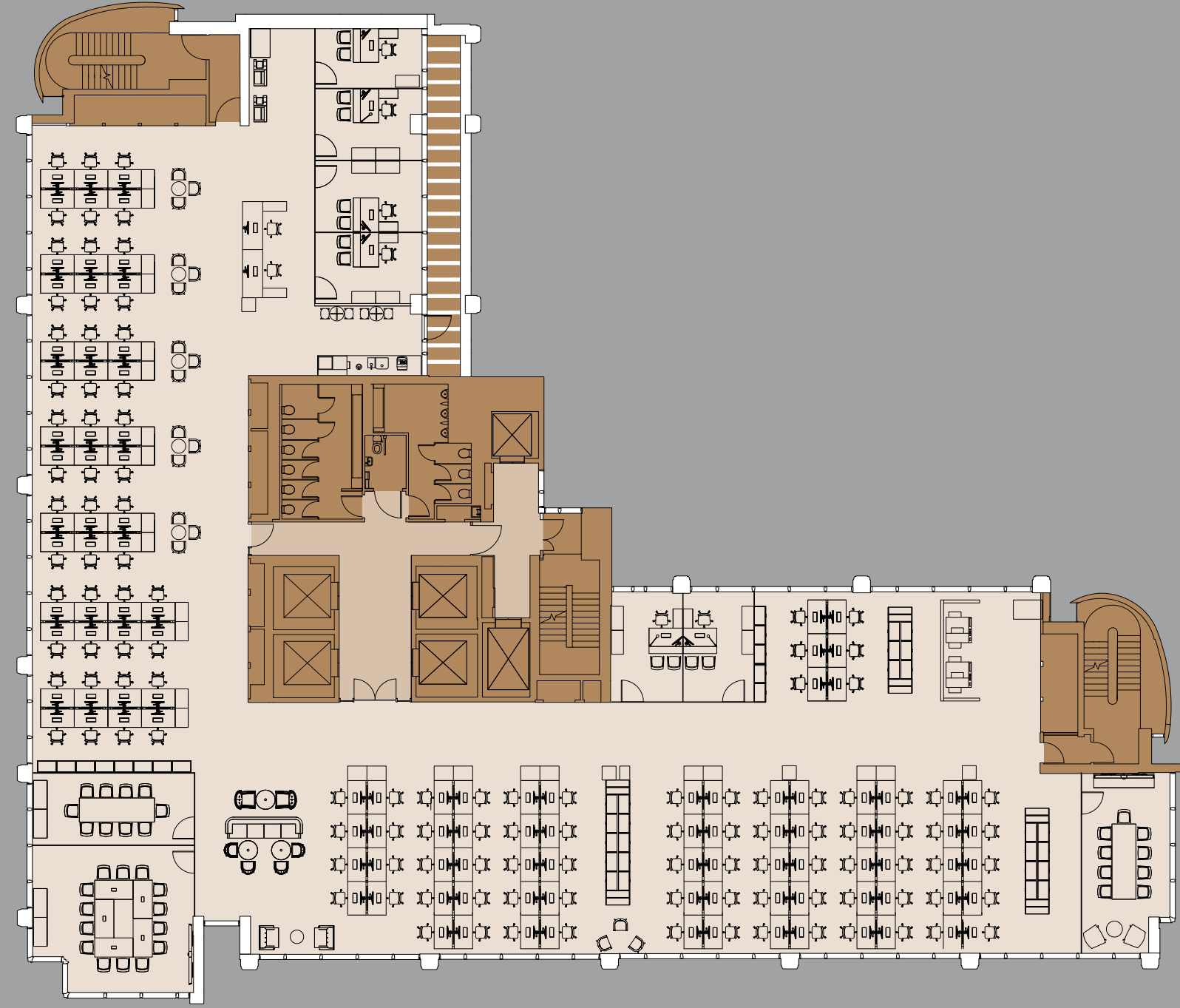
- 120 OPEN PLAN DESKS
- 6 PRIVATE OFFICES
- 2 MEETING ROOMS
- 3 BREAKOUT ROOMS

LONDON WALL



NOBLE STREET

LONDON WALL



NOBLE STREET

CORPORATE 104

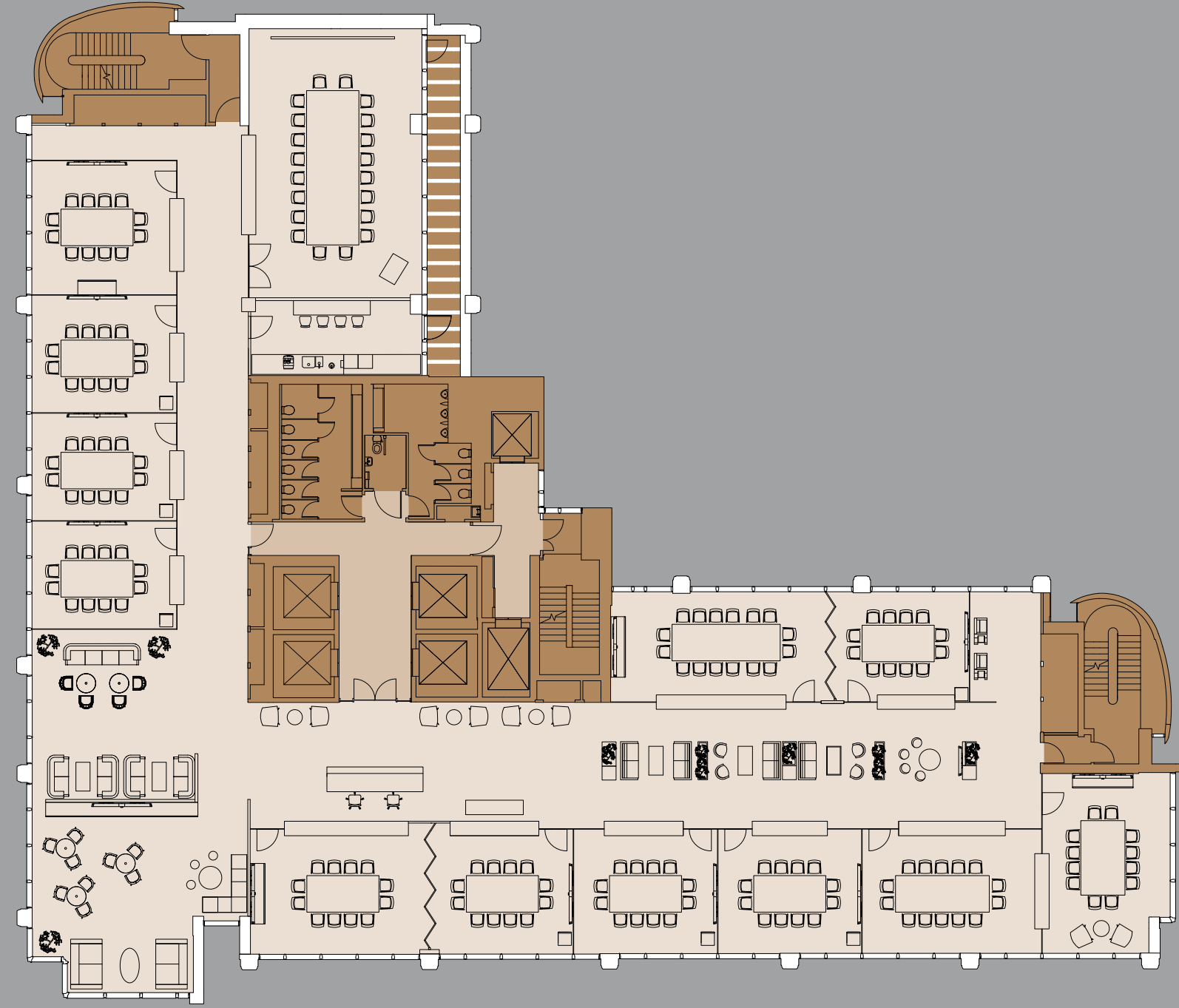
- 1 OPEN PLAN DESKS
- 1 PRIVATE OFFICE
- 1 CASUAL MEETING ROOM TABLE
- 13 MEETING ROOMS



CONFERENCE 22

- 1 MEETING ROOMS
- 1 CONFERENCE ROOM

LONDON WALL



NOBLE STREET

PROFESSIONAL TEAM

**PROJECT MANAGER /
CONTRACT ADMINISTRATORS**
CAPITA

ARCHITECT
BDP

MEP CONSULTANT
ELEMENTA CONSULTING

COST CONSULTANT
WT PARTNERSHIP

LEGAL FIRM
BDB

VERTICAL TRANSPORTATION
SWECO

BIM MANAGER
PYRENEES CONSULTING

FIRE CONSULTANT
FCS LIVE

**BUILDING CONTROL
CONSULTANT**
MLM

**TRANSPORT / WASTE
MANAGEMENT CONSULTANT**
WSP

**SECURITY / ANTI-TERROR
CONSULTANT**
HORUS SECURITY

RIGHTS OF LIGHT CONSULTANT
ANSTEY HORNE

BMU SPECIALIST
MOVVEO

About the architects – BDP

BDP is a major international, interdisciplinary practice of architects, designers, engineers and urbanists.

Founded in 1961, BDP is circa 900 strong and has studios across the UK, Ireland, Netherlands, the MENA region, India, China and Singapore.

BDP is different. Our unique position as a collective with experts spanning the spectrum of the built environment gives us a special status and capability in the design world.

We are place makers who work at every scale; from bespoke light sculptures to entirely new cities. We are passionate about the role of design to improve everyday life.

We respond to the demands of this dynamic and ever-changing planet with cross discipline design thinking which spans all of life's activities.

Our vision is to be the world's leading integrated architecture, engineering and design firm, delivering world class solutions which enhance the communities they serve.

LDNW.CO.UK

CONTACT



JONATHAN HUCKSTEP
+44 (0) 203 296 2007
jonathan.huckstep@cushwake.com

NICK RUSSELL-SMITH
+44 (0) 203 296 2106
nick.russell-smith@cushwake.com

ALISTAIR BROWN
+44 (0) 203 296 2007
alistair.brown@cushwake.com

Misrepresentation Act 1967: Cushman & Wakefield for themselves and for the vendor(s) or lessor(s) of this property whose agents they are, give notice that: 1. These particulars do not constitute, nor constitute any part of, an offer or contract. 2. None of the statements contained in these particulars as to the property are to be relied on as statements or representations of fact. 3. Any intending purchaser or lessee must satisfy himself by inspection or otherwise as to the correctness of each of the statements contained in these particulars. 4. The vendor(s) or lessor(s) do not make or give and neither Cushman & Wakefield, nor any person in their employment has any authority to make or give, any representation or warranty whatever in relation to this property. Finance Act 2013: Unless otherwise stated all prices and rents are quoted exclusive of VAT. The Business Protection from Misleading Marketing Regulations 2008: These details are believed to be correct at the time of compilation but may be subject to subsequent amendment. June 2018. S09854. siren | +44 (0)20 7478 8300 | sirendesign.co.uk

A DEVELOPMENT BY

MEAG

LDNW.CO.UK