

OFFICE SPACE AVAILABLE

FOR LEASE

9735 Landmark Parkway
Saint Louis, MO 63127

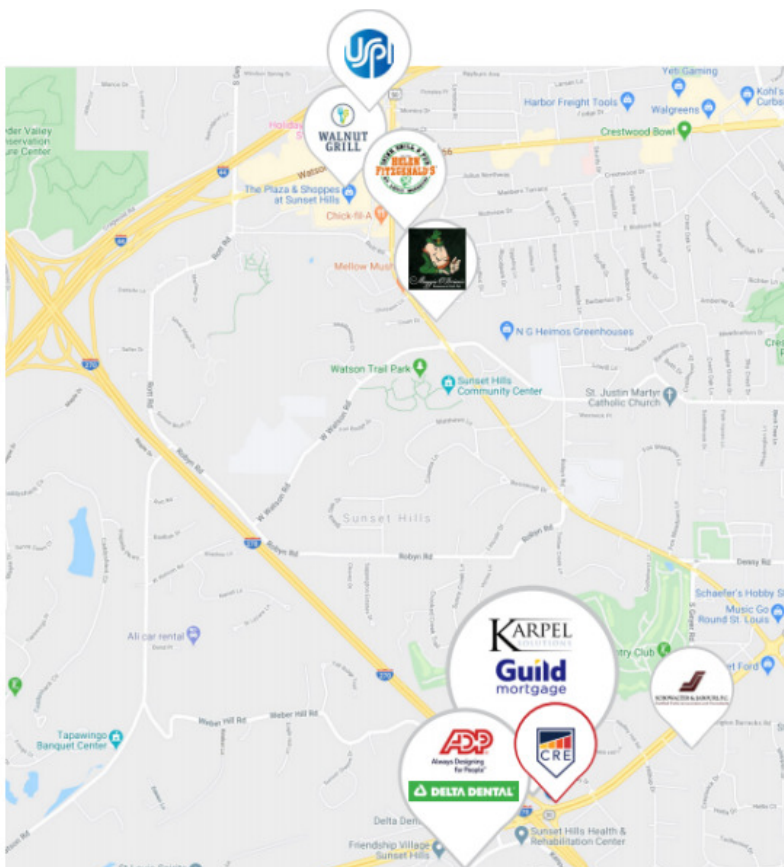


9735 Landmark Parkway



For Lease:
\$22.00 PSF

5,437 - 18,345 SF
Available



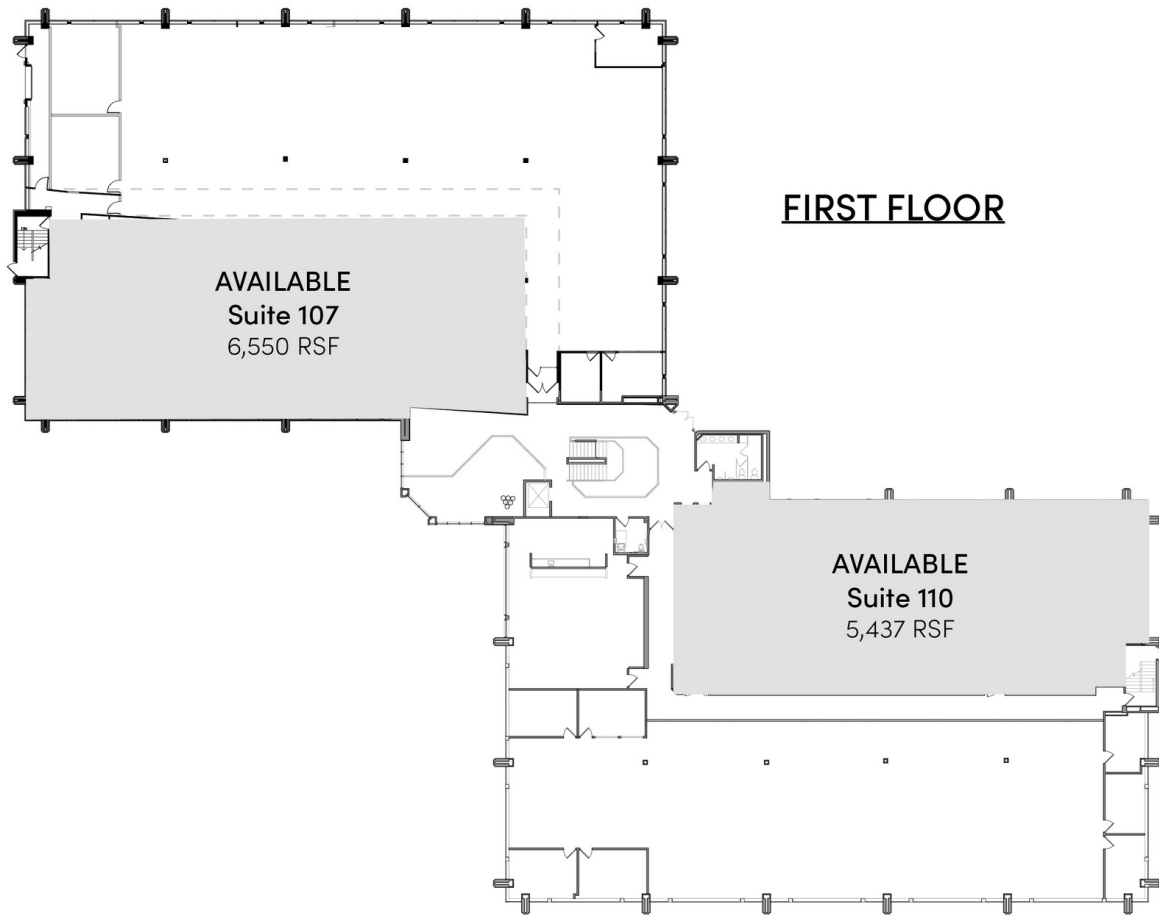
Property Highlights

- New Common Area improvements underway
- Immediate Access to Highway 270
- Large Blocks of Space Available
- Building Signage Opportunities
- Fiber Optic Data Connectivity
- Ideal Location for Corporate Office and/or Mobile Workforce
- Grab-and-Go Cafe on-site

This information has been obtained from sources believed reliable but has not been verified for accuracy or completeness. You should conduct a careful, independent investigation of the property and verify all information. Any reliance on this information is solely at your own risk.

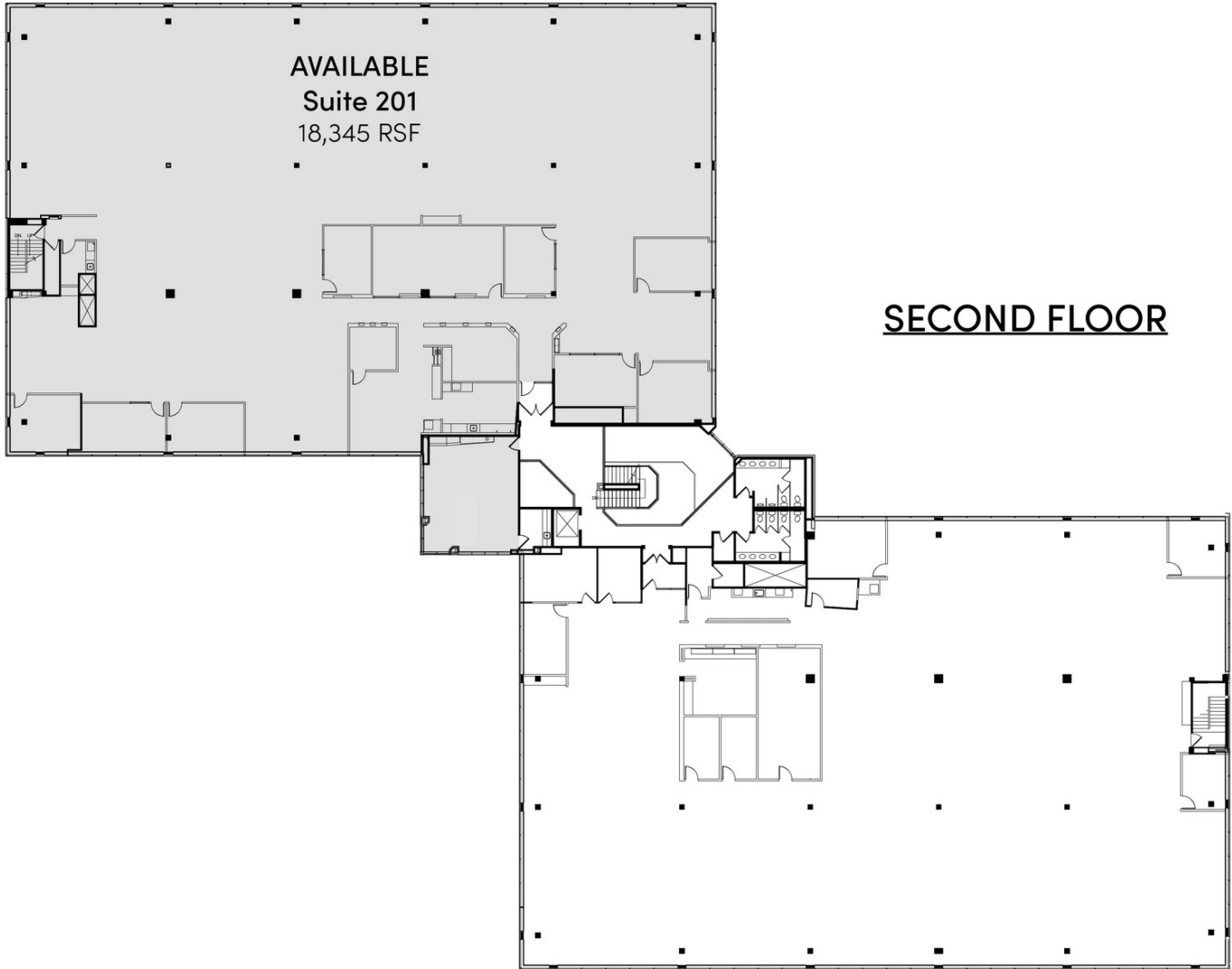
9735 Landmark Parkway

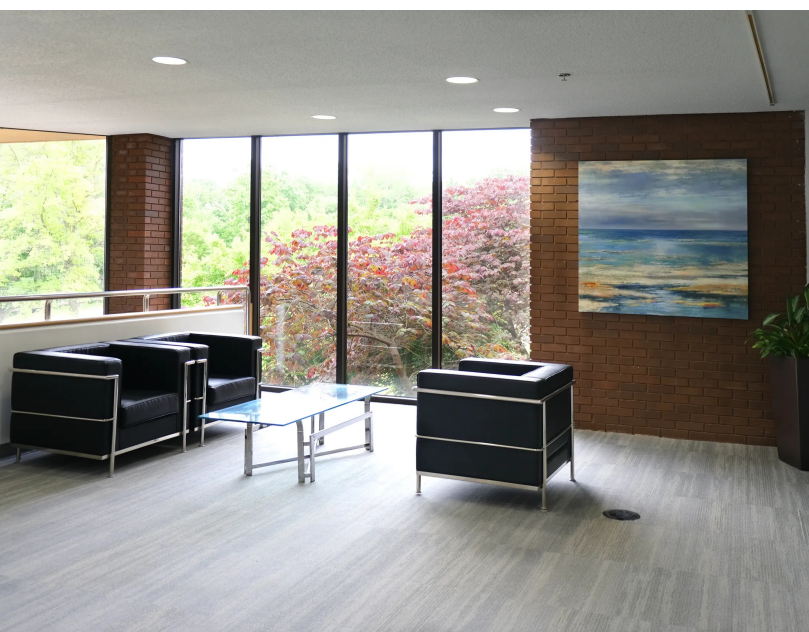
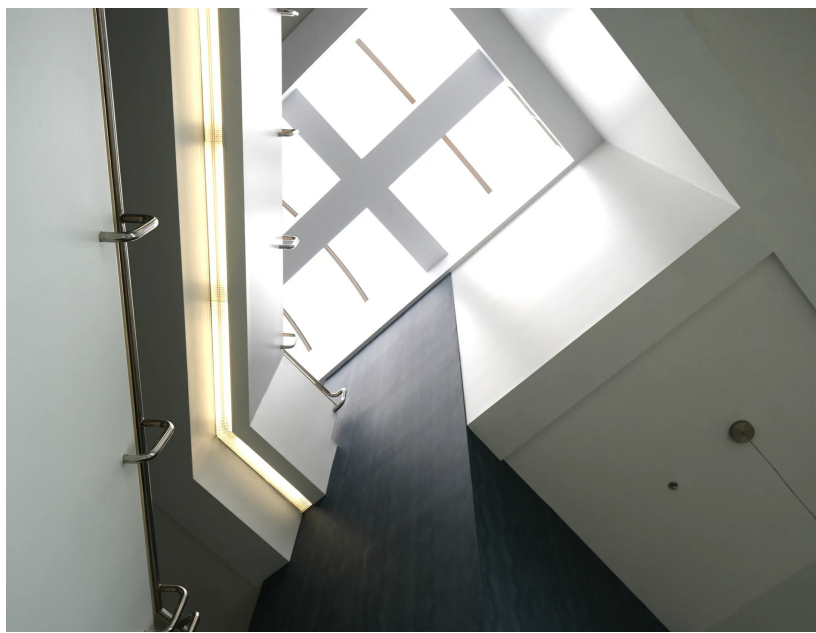
Floor Plan



9735 Landmark Parkway

Floor Plans





This information has been obtained from sources believed reliable but has not been verified for accuracy or completeness. You should conduct a careful, independent investigation of the property and verify all information. Any reliance on this information is solely at your own risk.





Joel Meyer | SIOR
Principal
314.744.8992
jmeyer@intcre.com



Dan Merlo, CCIM
Principal
314.270.5993
dmerlo@intcre.com

