

SONNA BUILDING FOR SUBLEASE

910 W Main Street, Ste. 350
AVAILABLE SF: 1,293.85 SF
BUILDING SIZE: 34,982 SF

PROPERTY HIGHLIGHTS

- Occupancy would be immediately.
- Space is move-in ready.
- Parking is at Tenant's cost and is available in nearby parking garages/lots.
- Prime Downtown location at the corner of 9th & Main Streets.
- Prime corner location on the 3rd Floor.
- Shared conference room and breakroom available to tenants on a space available basis at no additional cost.
- Exposed brick and high ceilings throughout.



AVAILABLE SPACE
1,293.85 SF



BUILDING SIZE
34,982 SF



ASKING RATE
\$19.50/SF



INTERMOUNTAIN
COMMERCIAL REAL ESTATE

WENDY SHOEMAKER
wendys@icrellc.com
(208) 285-2611 office
(208) 859-2816 cell

www.icreboise.com | 380 E. Parkcenter Boulevard Suite 290, Boise, ID 83706 | (208) 429-8603 office | (208) 429-8604 fax

The information has been obtained from sources believed reliable and, while we do not doubt its reliability, ICRE has not verified it and makes no guarantees, warranties or representations, expressed or implied, as to its accuracy. All interested parties should conduct their own independent investigation and rely on those results.



EXECUTIVE SUMMARY

Available SF: **1,293.25 SF**

Lease Rate: **\$19.50/SF**

Lease Type: **Full Service Including Janitorial**

Building Size: **34,982 SF**

Property Type: **Office**



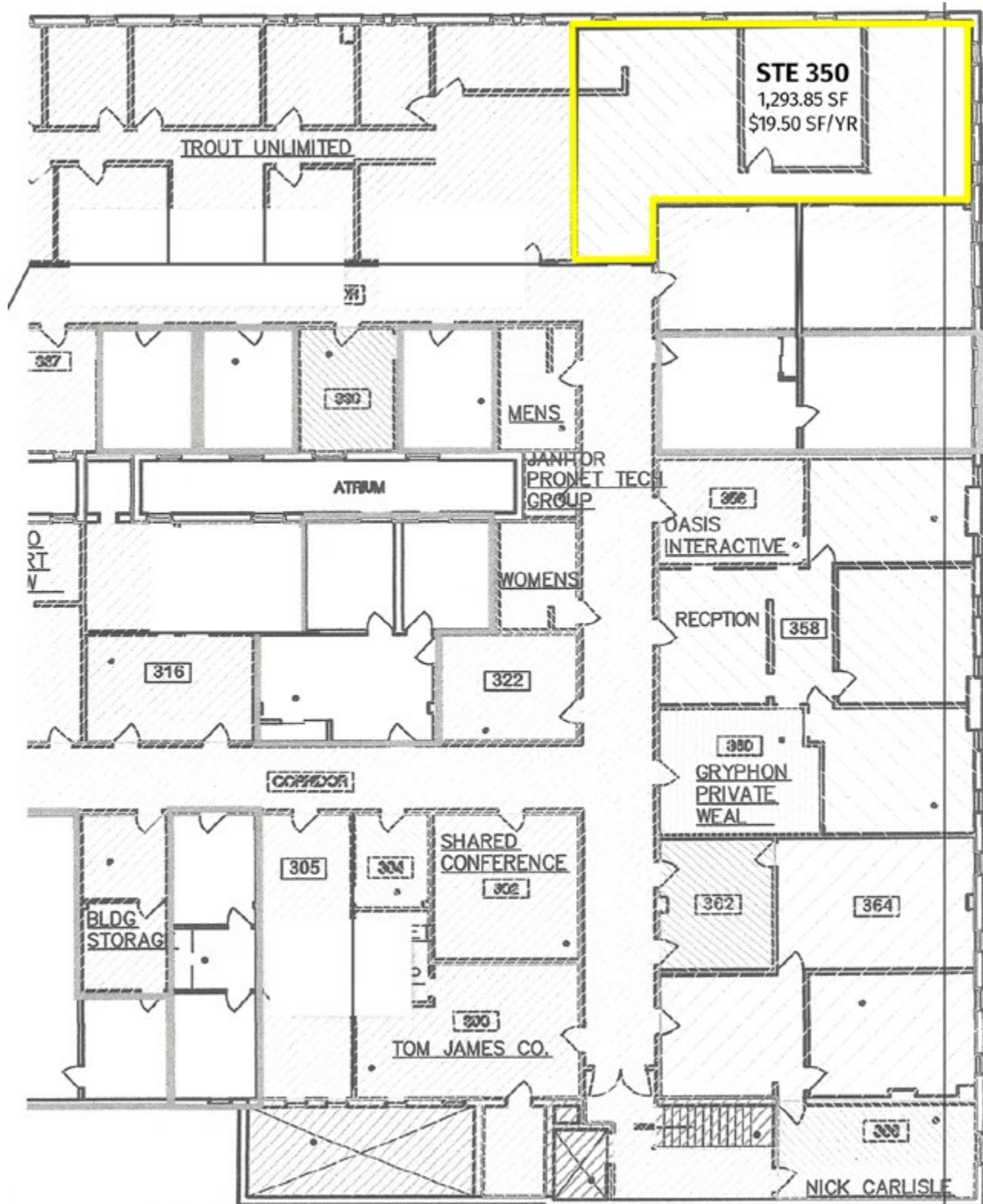
INTERMOUNTAIN
COMMERCIAL REAL ESTATE

WENDY SHOEMAKER

wendys@icrellc.com

(208) 285-2611 office

(208) 859-2816 cell



INTERMOUNTAIN
COMMERCIAL REAL ESTATE

WENDY SHOEMAKER

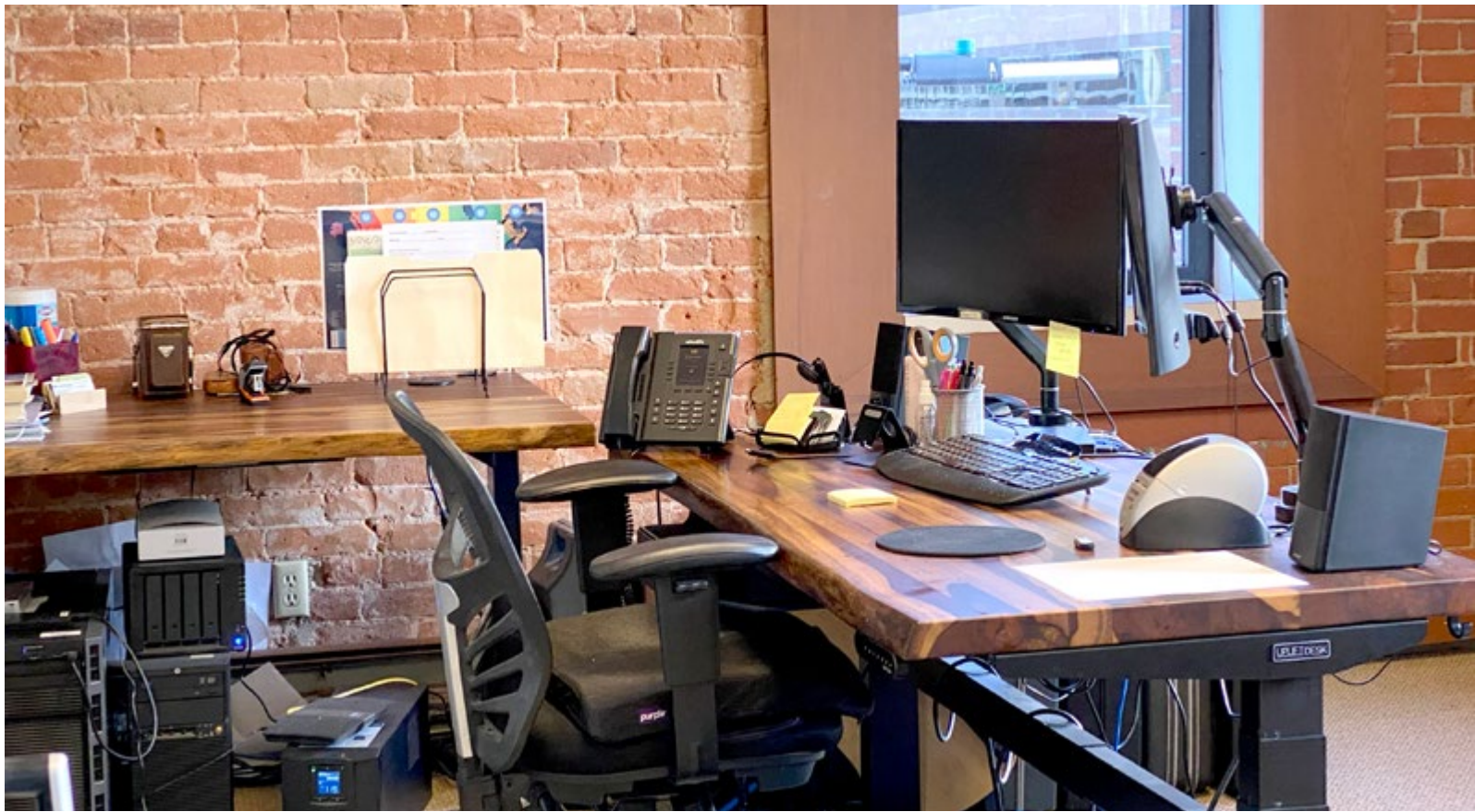
wendys@icrellc.com
(208) 285-2611 office
(208) 859-2816 cell



INTERMOUNTAIN
COMMERCIAL REAL ESTATE

WENDY SHOEMAKER

wendys@icrellc.com
(208) 285-2611 office
(208) 859-2816 cell



INTERMOUNTAIN
COMMERCIAL REAL ESTATE

WENDY SHOEMAKER

wendys@icrellc.com
(208) 285-2611 office
(208) 859-2816 cell

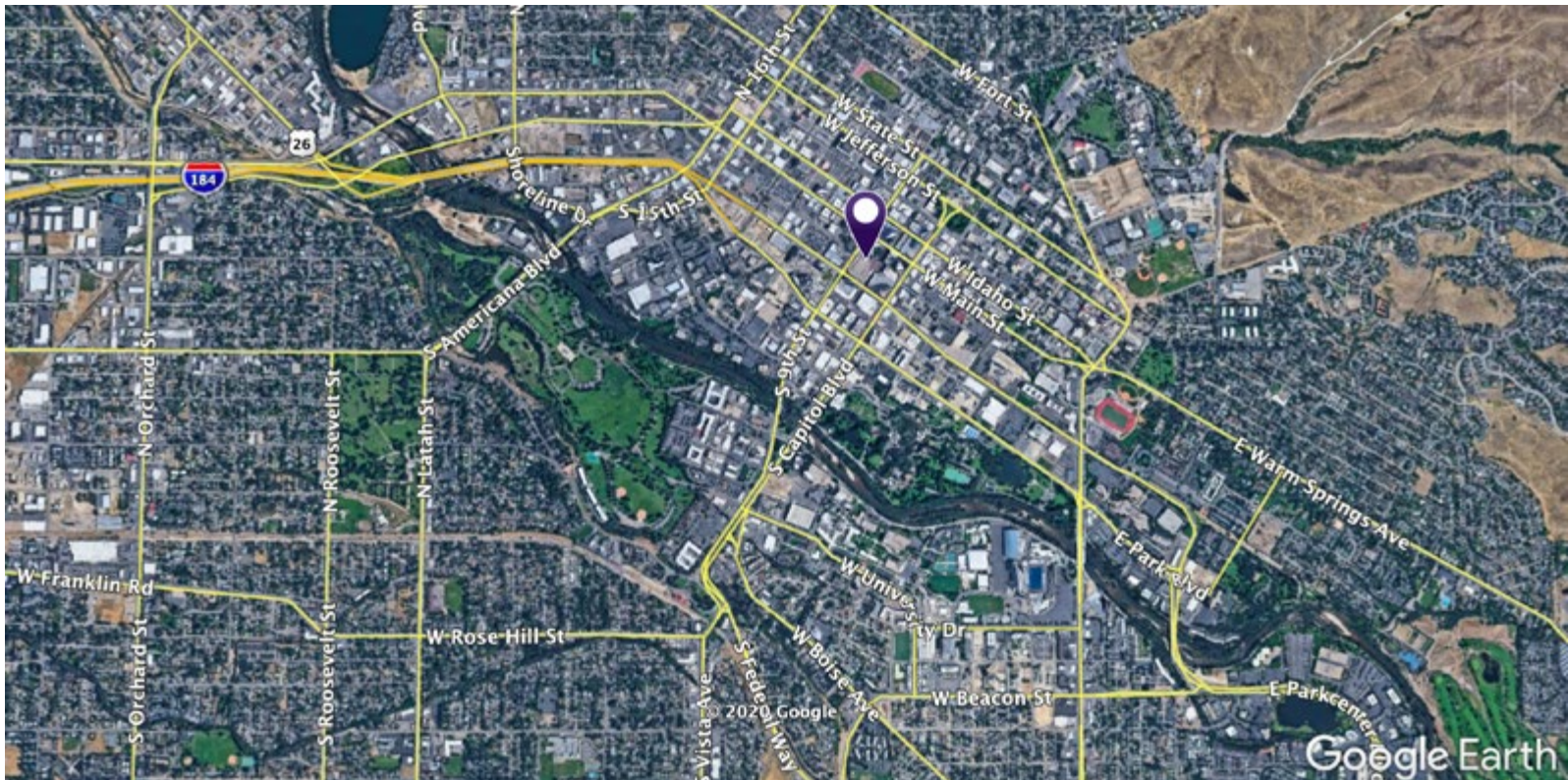


INTERMOUNTAIN
COMMERCIAL REAL ESTATE

WENDY SHOEMAKER

wendys@icrellc.com
(208) 285-2611 office
(208) 859-2816 cell

SONNA BUILDING | 910 W MAIN STREET, BOISE



INTERMOUNTAIN
COMMERCIAL REAL ESTATE

WENDY SHOEMAKER

wendys@icrellc.com

(208) 285-2611 office

(208) 859-2816 cell

www.icreboise.com | 380 E. Parkcenter Boulevard Suite 290, Boise, ID 83706 | (208) 429-8603 office | (208) 429-8604 fax

The information has been obtained from sources believed reliable and, while we do not doubt its reliability, ICRE has not verified it and makes no guarantees, warranties or representations, expressed or implied, as to its accuracy. All interested parties should conduct their own independent investigation and rely on those results.