

FOR LEASE

# Strawberry Creek

7401 144TH AVE, KENOSHA, WI 53142

RETAIL



## PROPERTY INFO

Join Johnson Bank in the newly developed Strawberry Creek area of Kenosha. Conveniently located just west of Interstate 94 on the highly-populated HWY 50 corridor. This unique opportunity sits just outside the serene Club of Strawberry Creek (golf, pool, fitness, spa, etc.) and has nearby neighbors of Woodman's Food Market, Starbucks, Steinhafels Furniture, Best Buy, Gander Mountain, and more. The "Main and Main" intersection of Kenosha.

- + Size: 2,400 SF divisible
- + Rental Rate: \$24.00/SF Gross
- + Parking: 37 spaces



FOR LEASE

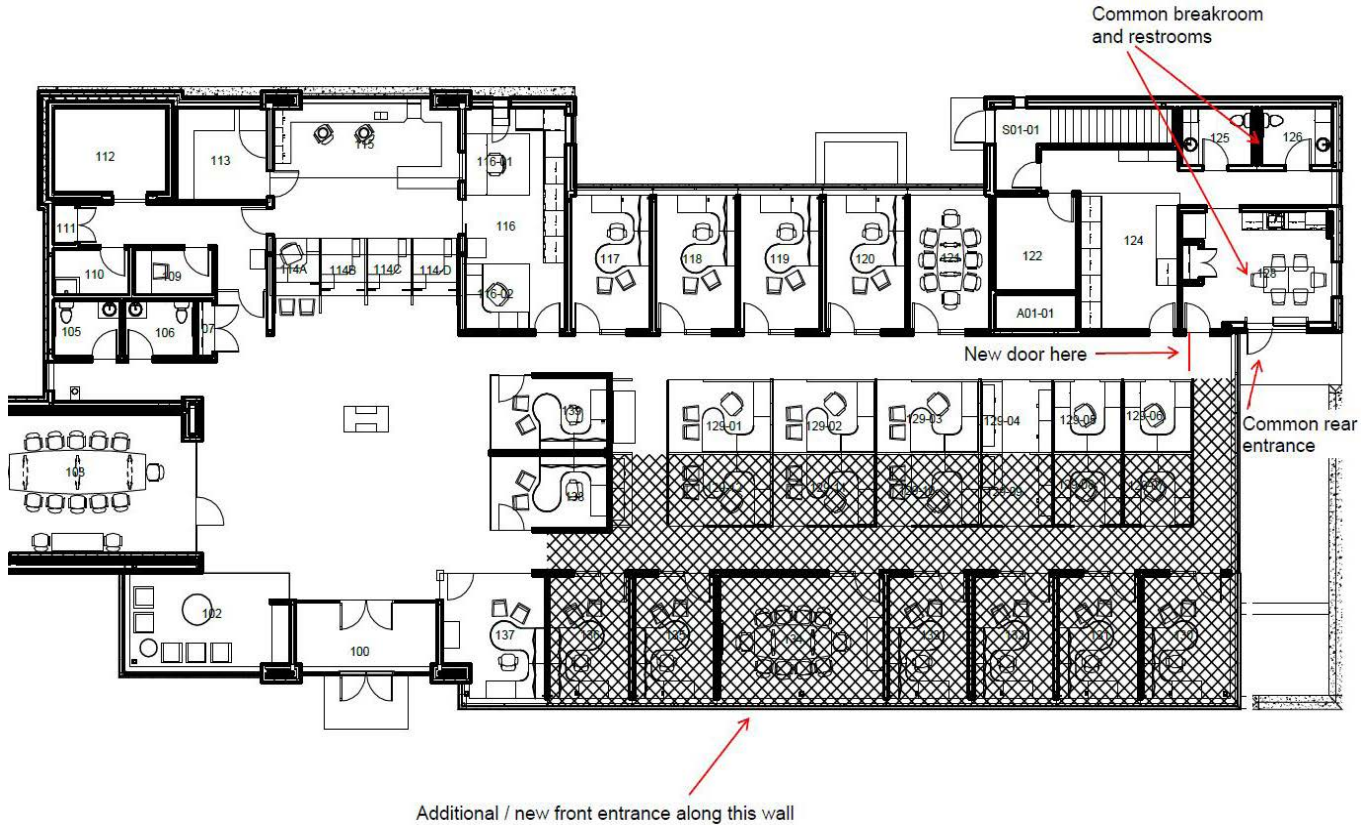
# Strawberry Creek

7401 144TH AVE, KENOSHA, WI 53142

RETAIL



## POTENTIAL SITE PLAN



© 2016 CBRE, Inc. This information has been obtained from sources believed reliable. We have not verified it and make no guarantee, warranty or representation about it. Any projections, opinions, assumptions or estimates used are for example only and do not represent the current or future performance of the property. You and your advisors should conduct a careful, independent investigation of the property to determine to your satisfaction the suitability of the property for your needs. Photos herein are the property of their respective owners and use of these images without the express written consent of the owner is prohibited. CBRE and the CBRE logo are service marks of CBRE, Inc. and/or its affiliated or related companies in the United States and other countries. All other marks displayed on this document are the property of their respective owners.

FOR LEASE

# Strawberry Creek

7401 144TH AVE, KENOSHA, WI 53142

RETAIL



## MONUMENT



## ESTIMATED DEMOGRAPHICS

Year: 2017

	1 Mile	3 Miles	5 Miles
Population	813	10,140	21,696
Avg. Household Income	\$108,224	\$93,803	\$92,517
Daytime Population	439	6,255	22,338

Traffic Counts

75th St. 25,600 VPD

© 2016 CBRE, Inc. This information has been obtained from sources believed reliable. We have not verified it and make no guarantee, warranty or representation about it. Any projections, opinions, assumptions or estimates used are for example only and do not represent the current or future performance of the property. You and your advisors should conduct a careful, independent investigation of the property to determine to your satisfaction the suitability of the property for your needs. Photos herein are the property of their respective owners and use of these images without the express written consent of the owner is prohibited. CBRE and the CBRE logo are service marks of CBRE, Inc. and/or its affiliated or related companies in the United States and other countries. All other marks displayed on this document are the property of their respective owners.

FOR LEASE

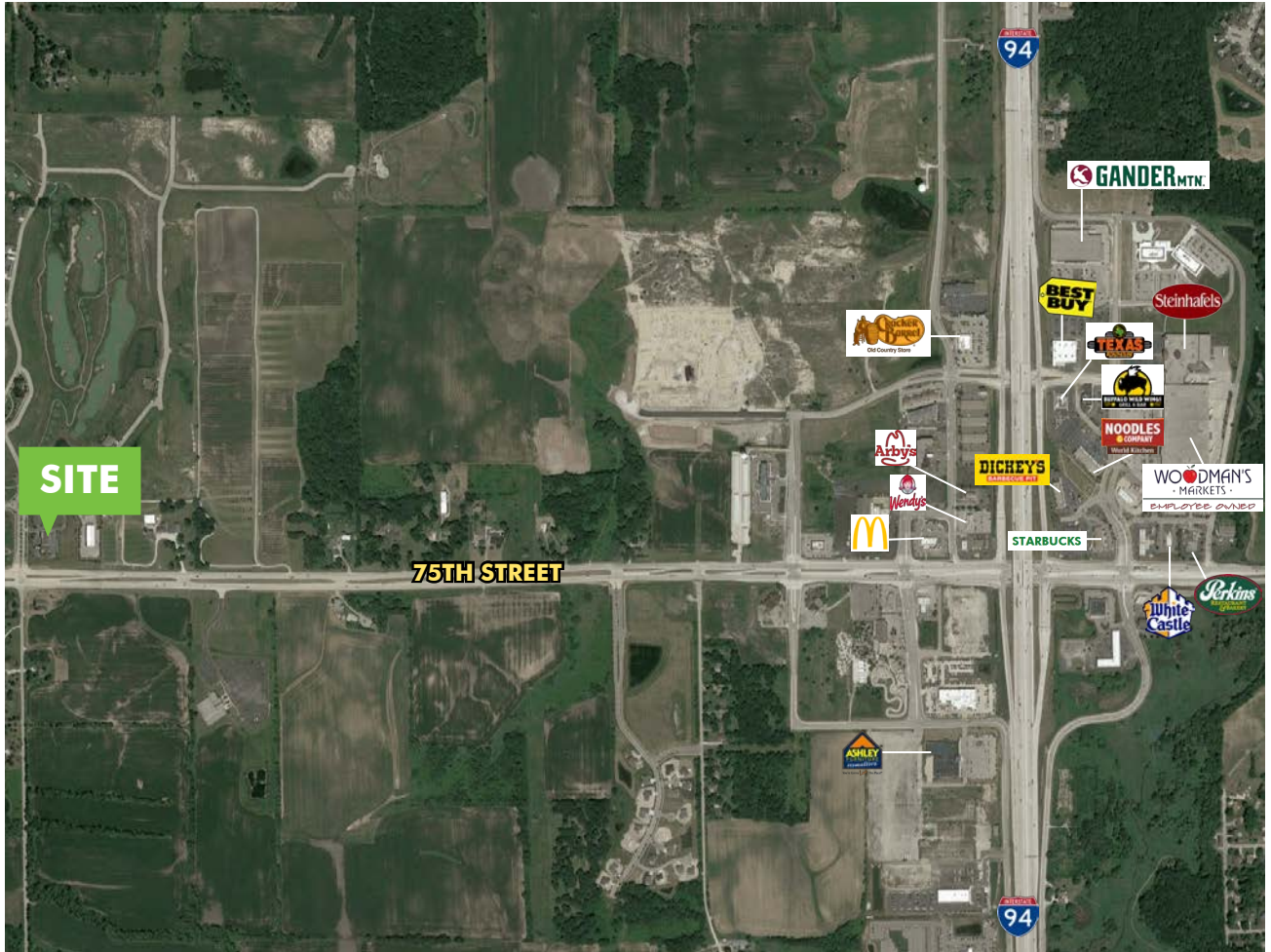
# Strawberry Creek

7401 144TH AVE, KENOSHA, WI 53142

RETAIL



AERIAL



## CONTACT US

### JOHN KARDELIS

Vice President  
+1 414 274 1638  
john.kardelis@cbre.com

### MATTHEW CARIELLO

Senior Associate  
+1 414 274 1644  
matthew.cariello@cbre.com

© 2016 CBRE, Inc. This information has been obtained from sources believed reliable. We have not verified it and make no guarantee, warranty or representation about it. Any projections, opinions, assumptions or estimates used are for example only and do not represent the current or future performance of the property. You and your advisors should conduct a careful, independent investigation of the property to determine to your satisfaction the suitability of the property for your needs. Photos herein are the property of their respective owners and use of these images without the express written consent of the owner is prohibited. CBRE and the CBRE logo are service marks of CBRE, Inc. and/or its affiliated or related companies in the United States and other countries. All other marks displayed on this document are the property of their respective owners.

# STATE OF WISCONSIN BROKER DISCLOSURE

## To Non-Residential Customers

**Wisconsin Law requires all real estate licensees to give the following information about brokerage services to prospective customers.**

Prior to negotiating on your behalf the Broker must provide you the following disclosure statement:

### **BROKER DISCLOSURE TO CUSTOMERS**

You are the customer of the broker. The broker is either an agent of another party in the transaction or a subagent of another broker who is the agent of another party in the transaction. The broker, or a salesperson acting on the behalf of the broker, may provide brokerage services to you. Whenever the broker is providing brokerage services to you, the broker owes you, the customer the following duties:

- *The duty to prove brokerage services to you fairly and honestly.*
- *The duty to exercise reasonable skill and care in providing brokerage services to you.*
- *The duty to provide you with accurate information about market conditions within a reasonable time if you request it, unless disclosure of the information is prohibited by law.*
- *The duty to disclose to you in writing certain material adverse facts about a property, unless disclosure of the information is prohibited by law (see "Definition of Material Adverse Facts" below).*
- *The duty to protect your confidentiality. Unless the law requires it, the broker will not disclose your confidential information of other parties.*
- *The duty to safeguard trust funds and other property the broker holds.*
- *The duty, when negotiating, to present contract proposals in an objective and unbiased manner and disclose the advantages and disadvantages of the proposals.*

Please review this information carefully. A broker or salesperson can answer your questions about brokerage services, but if you need legal advice, tax advice, or a professional home inspection, contact an attorney, tax advisor, or home inspector. This disclosure is required by section 452.135 of the Wisconsin Statutes and is for information only. It is a plain language summary of a broker's duties to a customer under section 452.133(l) of the Wisconsin Statutes.

### **CONFIDENTIALITY NOTICE TO CUSTOMERS**

Broker will keep confidential any information given to broker in confidence, or any information obtained by broker that he or she knows a reasonable person would want to be kept confidential by law, or authorize the broker to disclose particular information. A broker shall continue to keep the information confidential after broker is no longer providing brokerage services to you.

The following information is required to be disclosed by law.

1. Material adverse facts, as defined in section 452.01(5g) of the Wisconsin statutes (see "definition of material adverse facts" below).
2. Any facts known by the broker that contradict any information included in a written inspection report on the property or real estate that is the subject of the transaction. To ensure that the broker is aware of what specific information below. At a later time, you may also provide the broker with other information that you consider to be confidential.

CONFIDENTIAL INFORMATION:

---

NON-CONFIDENTIAL INFORMATION (The following information may be disclosed by Broker):

---

(Insert information you authorize to broker to disclose such as financial qualification information)

### **CONSENT TO TELEPHONE SOLICITATION**

I/We agree that the Broker and any affiliated settlement service providers (for example, a mortgage company or title company) may call our/my home or cell phone numbers regarding issues, goods and services related to the real estate transaction until I/we withdraw this consent in writing. List Home/Cell Numbers:

### **SEX OFFENDER REGISTRY**

Notice: You may obtain information about the sex offender registry and persons registered with the registry by contacting the Wisconsin Department of Corrections on the internet at <http://offender.doc.state.wi.us/public/> or by phone at (608)240-5830.

### **DEFINITION OF MATERIAL ADVERSE FACTS**

A "material adverse fact" is defined in Wis. Stat. 452.01 (5g) as an adverse fact that a party indicates is of such significance, or that is generally recognized by a competent licensee as being of such significance to a reasonable party that it affects or would affect the party's decision to enter into a contract or agreement concerning a transaction or affects or would affect the party's decision about the terms of such a contract or agreement. An "adverse fact" is defined in Wis. Stat. 452.01 (le) as a condition or occurrence that a competent licensee generally recognizes will significantly adversely affect the value of the property, significantly reduce the structural integrity of improvements to real estate, or present a significant health risk to occupants of the property, or information that indicates that a party to a transaction is not able to or does not intend to meet his or her obligations under a contract or agreement made concerning the transaction.