

greenpoint, ny

1111 manhattan avenue

corner retail space on manhattan avenue and clay street | for lease



DEMOGRAPHICS	.25 MILE	.50 MILE	.75 MILE
Population	5,441	14,685	24,247
Median HHI	\$47,230	\$63,357	\$65,774
Daytime Population	1,404	7,715	16,834

Available	1,000 square feet
Asking Rent	Upon Request
Extras	TBD
Area Retail	Napa Auto Parts, C-Town Supermarket, Starbucks, McDonald's, Duane Reade and many more
Comments	<ul style="list-style-type: none">• located on Manhattan Avenue which is a dynamic retail corridor• Greenpoint is one of Brooklyn's new up and coming neighborhoods with many new developments• close proximity to Greenpoint Avenue (G) subway station with 2.5 riders annually

For More Information:

Russel Helbling | Vice President | russel@sabreny.com | T 718 484 2002 x1506

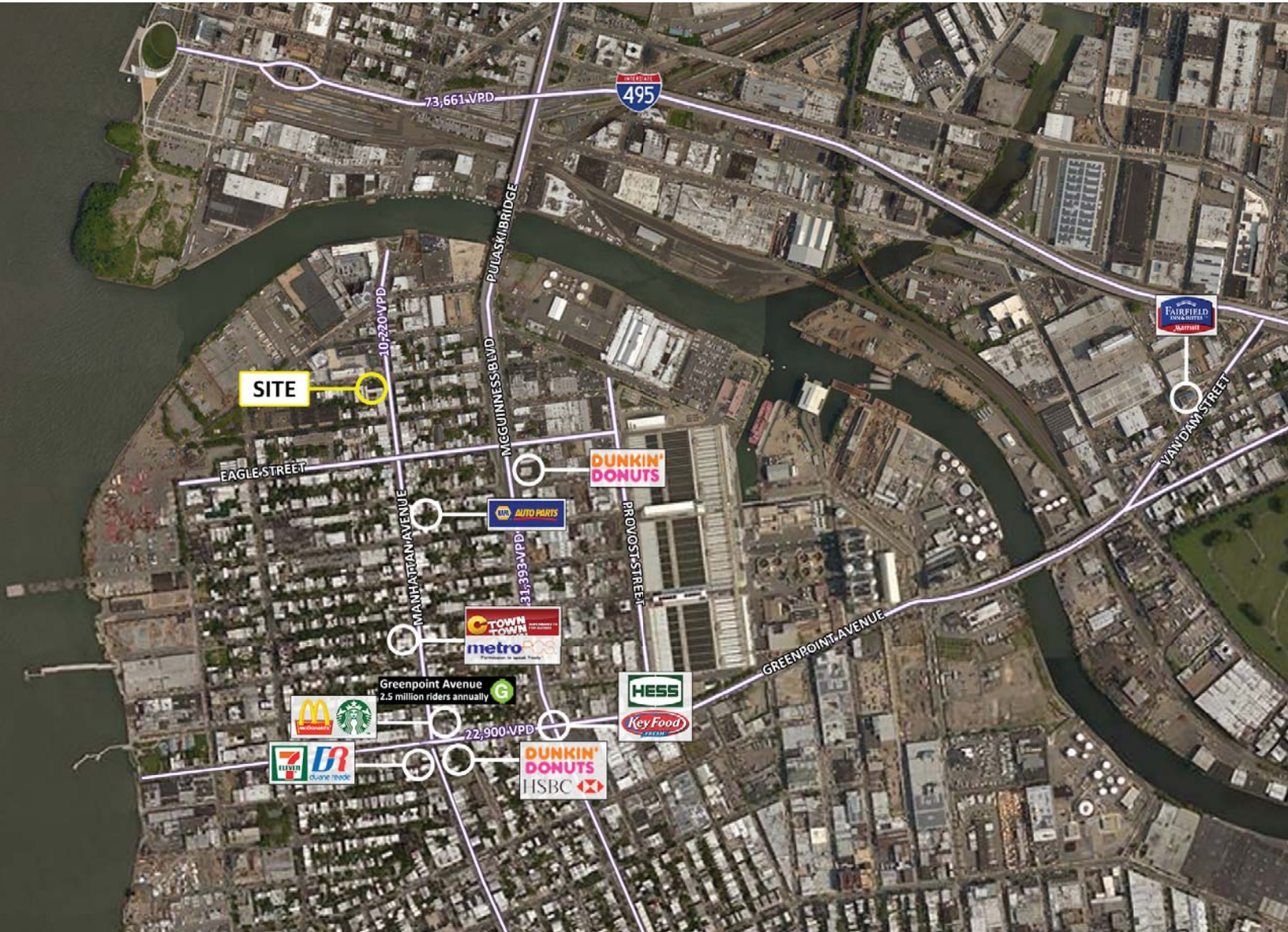
Mark Gallucci | Managing Director - Queens | mark@sabreny.com | T 718 484 2002 x1508

sabreny.com



greenpoint, ny

1111 manhattan avenue



For More Information:

Russel Helbling | Vice President | russel@sabreny.com | T 718 484 2002 x1506

Mark Gallucci | Managing Director - Queens | mark@sabreny.com | T 718 484 2002 x1508

Sabre Real Estate Group, LLC

500 Old Country Road Garden City NY 11530

256B Flatbush Ave Brooklyn NY 11217

30 Journal Square Jersey City NJ 07306

sabreny.com

sabre
real estate

© Sabre Real Estate Group, LLC. This information has been obtained from sources believed reliable. We have not verified it and make no guarantee, warranty or representation about it. Any projections, opinions, assumptions or estimates used are for example only and do not represent the current or future performance of the property. You and your advisors should conduct a careful, independent investigation of the property to determine to your satisfaction the suitability of the property for your needs.