

OFFICE SUITE FOR LEASE

 8727 W Hwy 2
Airway Heights, WA 99224

Offered at
\$1.25 PSF, NNN

Parcel: 25292.9055

High visibility, quality brick former Bank of Whitman building located at the entryway to Airway Heights on Hwy 2, north of the Spokane International Airport. Excellent Visibility on Hwy 2 with traffic counts of 28,000 cars per day. Abundant parking front and rear. Prominent monument sign/reader board available.

The 5,134 square foot main level was originally built for Bank of Whitman and features large open bull-pen area, 2 work areas, 6 private offices, built in reception area, two restrooms and bank vault, glass viewing windows to drive through and working pneumatic tube system.

Approx 3 miles from Interstate 90.



ROB KANNAPIEN

208.704.3832
robk@ccim.net

CCIMTEAM.COM

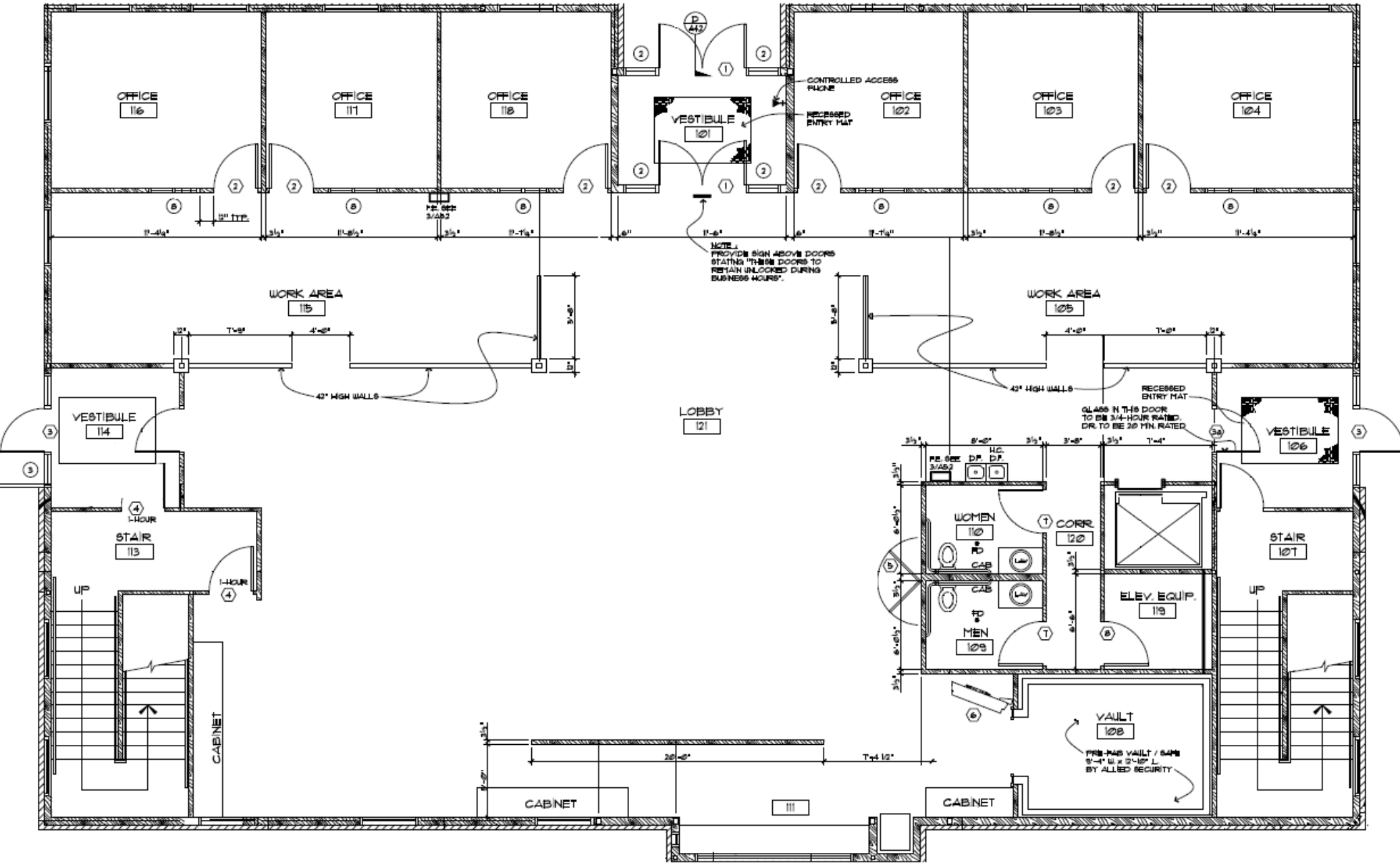


**COLDWELL BANKER
COMMERCIAL**

SCHNEIDMILLER REALTY
2000 Northwest Blvd
CdA, ID 83814



FLOOR PLAN



ROB KANNAPIEN

208.704.3832
robk@ccim.net

CCIMTEAM.COM

COLDWELL BANKER COMMERCIAL

SCHNEIDMILLER REALTY
2000 Northwest Blvd
Cd, ID 83814





CLOSE UP

Whitman Campus

Technology Blvd.

Highway 2

 **ROB KANNAPIEN**

208.704.3832
robk@ccim.net

CCIMTEAM.COM

 **COLDWELL BANKER
COMMERCIAL**

SCHNEIDMILLER REALTY
2000 Northwest Blvd
CdA, ID 83814

Data is deemed reliable, no warranties or representations expressed or implied. Broker not responsible for changes, errors, omissions, or prior sale without notice. All critical measurements shall be done by Lessee or Buyer.

NEARBY BUSINESSES



ROB KANNAPIEN

208.704.3832
robk@ccim.net

CCIMTEAM.COM

COLDWELL BANKER COMMERCIAL

SCHNEIDMILLER REALTY
2000 Northwest Blvd
CdA, ID 83814



LOCATION



Highway 2

Sunset Highway

Airport Drive

Airport Drive

Highway 2

Interstate 90

Spokane Airport

 **ROB KANNAPIEN**

208.704.3832
robk@ccim.net

CCIMTEAM.COM

 **COLDWELL BANKER
COMMERCIAL**

SCHNEIDMILLER REALTY
2000 Northwest Blvd
CdA, ID 83814

Data is deemed reliable, no warranties or representations expressed or implied. Broker not responsible for changes, errors, omissions, or prior sale without notice. All critical measurements shall be done by Lessee or Buyer.