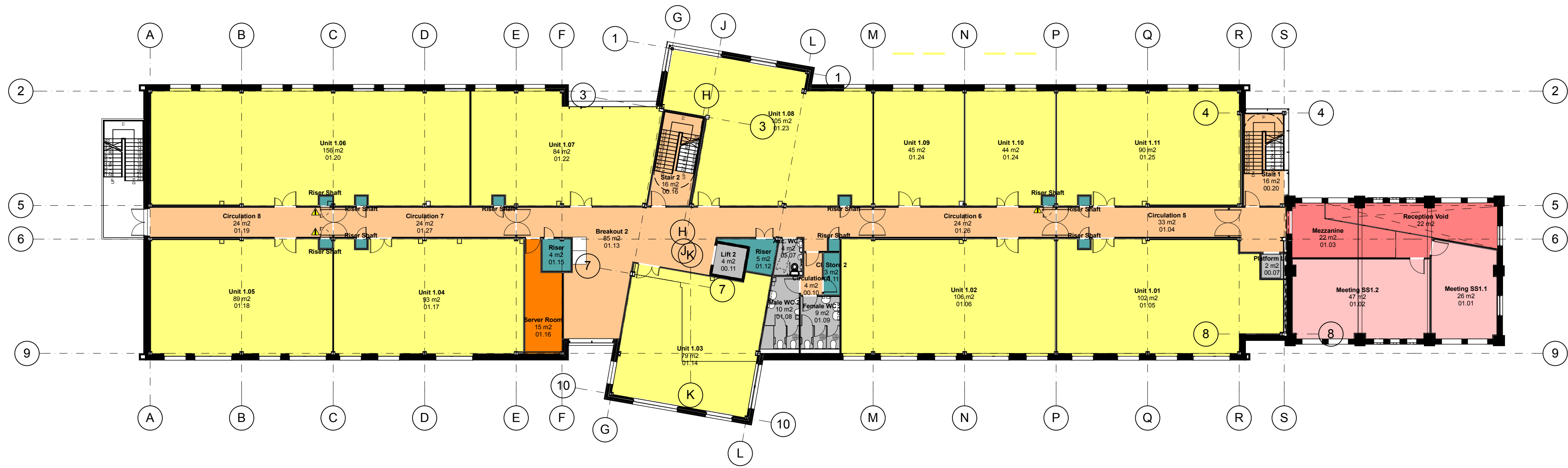
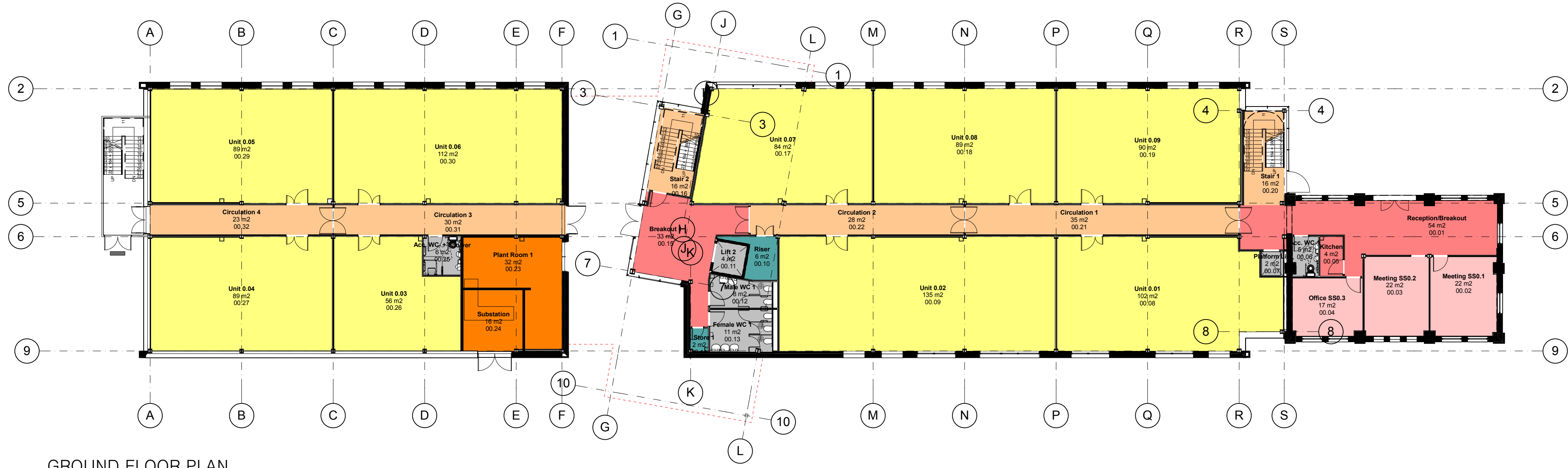


SECOND FLOOR PLAN



FIRST FLOOR PLAN



GROUND FLOOR PLAN

**Notes**  
Check all dimensions on site. Do not scale from this drawing.  
Report any discrepancies and omissions to HLM Architects.  
This drawing is Copyright ©

**DESIGN/SKETCH DESIGN**  
Unless stated otherwise, the designs shown are subject to detailed site survey, investigations, and legal definition, the CDM Regulations, and the comments and / or approval of the various relevant Local Authority Officers, Statutory Undertakers, Fire Officers, Engineers and the like. They are copyright, project specific and confidential and no part is to be used or copied in any way without the express prior consent of HLM Architects.

**PHOTOCOPIED/SCANNED INFORMATION**  
NB This drawing is based on photocopied / scanned information liable to distortion in scale.

**AREA CALCULATIONS**  
NB The areas shown are approximate only and have been measured off preliminary drawings as the likely areas at the current state of design using the stated option from the Code of Measuring Practice, 4th edition, RICS / BSA. These may be affected by future design development and construction tolerances, or the result of surveys for existing buildings. Take account of these factors before planning any financial or property development purpose or strategy and seek confirmation of latest areas before decision making.

**3RD-PARTY INFORMATION**  
NB This drawing includes information provided by independent surveyors and / or consultants, to whom all queries shall be made. HLM Architects can accept no liability for its content or accuracy.

**KEY**

- CIRCULATION
- BREAKOUT SPACE
- MEETING ROOMS + OFFICE
- LETTABLE UNITS
- PLANT + SERVER
- RISERS + CLEANERS STORE
- TOILETS/ANCILLARY

— EXTENT OF GIFA  
- - - GIFA REFURB CUT-OFF

GIFA (excluding refurb) : **2,684 m<sup>2</sup>**  
GIFA (including refurb) : **2,901m<sup>2</sup>**  
NET lettable area : **1,991 m<sup>2</sup>**  
NET lettable area (with meeting rooms): **2,125 m<sup>2</sup>**

P5	DRYLINING TO BRACING AMENDED + SECOND FLOOR LAYOUT AMENDED	29/02/16	RN	BC
P4	STAIR 2 UPDATED IN LINE WITH SUBCONTRACTOR + CROSS BRACING ADDED	17/02/16	RN	BC
P3	GIFA AMENDED	27/01/16	RN	BC
P2	M + E + BUILDING CONTROL INPUT	27/10/15	RN	BC
P1	PRELIMINARY ISSUE FOR COMMENT	08/10/15	RN	BC
Rev	Description	Date	Dm	Chk

Revisions
Project

## BOOLE TECHNOLOGY CENTRE

Client

**University of Lincoln. Lincoln Science + Innovation Park**



Title

## PROPOSED GA FLOOR PLANS

Drawing No.	Revision
<b>14117 / A(05)001</b>	<b>P5</b>

Scale @ A1	Drawn
<b>1:200</b>	<b>HLM</b>
Date	Checked
<b>08/10/2015</b>	<b>HLM</b>

**HLM**

2ND FLOOR,  
THE RUSKIN BUILDING,  
TUDOR SQUARE,  
SHEFFIELD,  
S1 2LA

T: +44 (0) 114 263 9600  
F: +44 (0) 114 263 9650

LONDON SHEFFIELD GLASGOW BELFAST CARDIFF FORTHMOUTH JOHANNESBURG ABU DHABI