

# ***For Lease—Berewick Area Professional or Medical Office Space***

*Dave Heiliger*

*704-847-2890*

*Ext. 22*

*Ken Heiliger*

*704-847-2890*

*Ext. 21*



## ***4715 Dixie River Road***

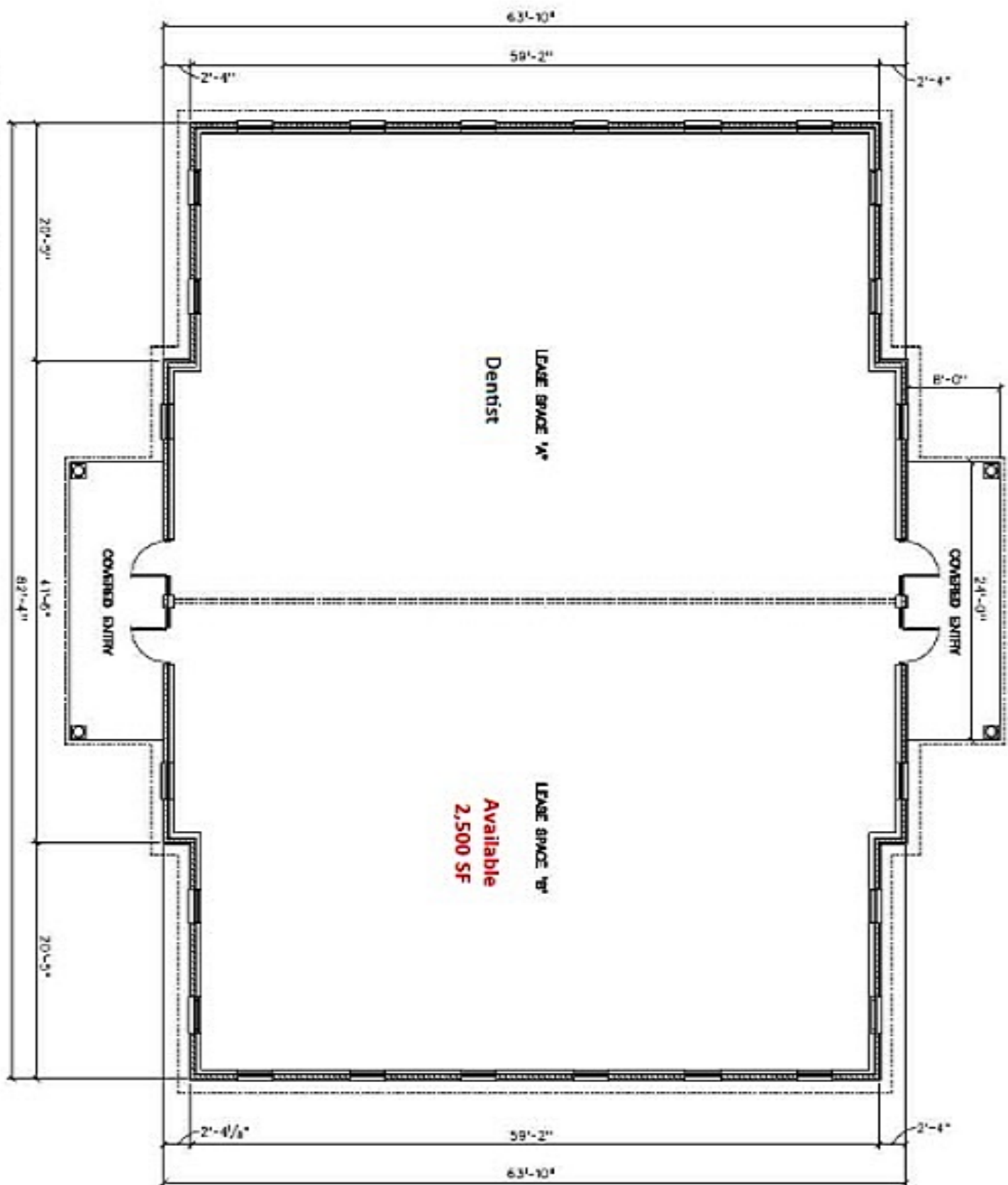
- ◆ Located off Steele Creek Road just below I- 485. Across from the new Berewick Town Center.
- ◆ High growth area.
- ◆ Shell Office Space - 2,500 RSF .
- ◆ Exterior signage available.



Heiliger Associates, Inc.  
2544 Plantation Center Dr. Ste B  
Matthews, NC 28105  
Fax: 704-847-2893  
Email:  
dave@heiligerassociates.com  
ken@heiligerassociates.com

All information furnished regarding this property was obtained from sources deemed reliable but no warranty or representation is made of the accuracy thereof. The property is subject to prior sale or lease or withdrawal.

# Floor Plan



1 OVERALL BUILDING FLOOR PLAN  
SCALE: 1/4"