

FOR LEASE



Office Space for Lease

1010 DOYLE STREET
MENLO PARK, CA

Area

3,610 SF Available

Property Highlights

- Expansive Windowline Offering Exceptional Natural Light
- 3 Dedicated Parking Spots Per Suite
- Elevator Exclusive to 2nd Floor
- 1 Block to Downtown Menlo Park Amenities
- 2 Blocks to Menlo Park Caltrain Station

For information, please contact:

Sam Untrecht

Associate

t 650-815-5647

sam.untrecht@nmrk.com

CA RE License #02238025

Carter Norton

Associate

t 650-208-0068

carter.norton@nmrk.com

CA RE License #02205882

258 High Street
Palo Alto, CA 94301



nmrk.com

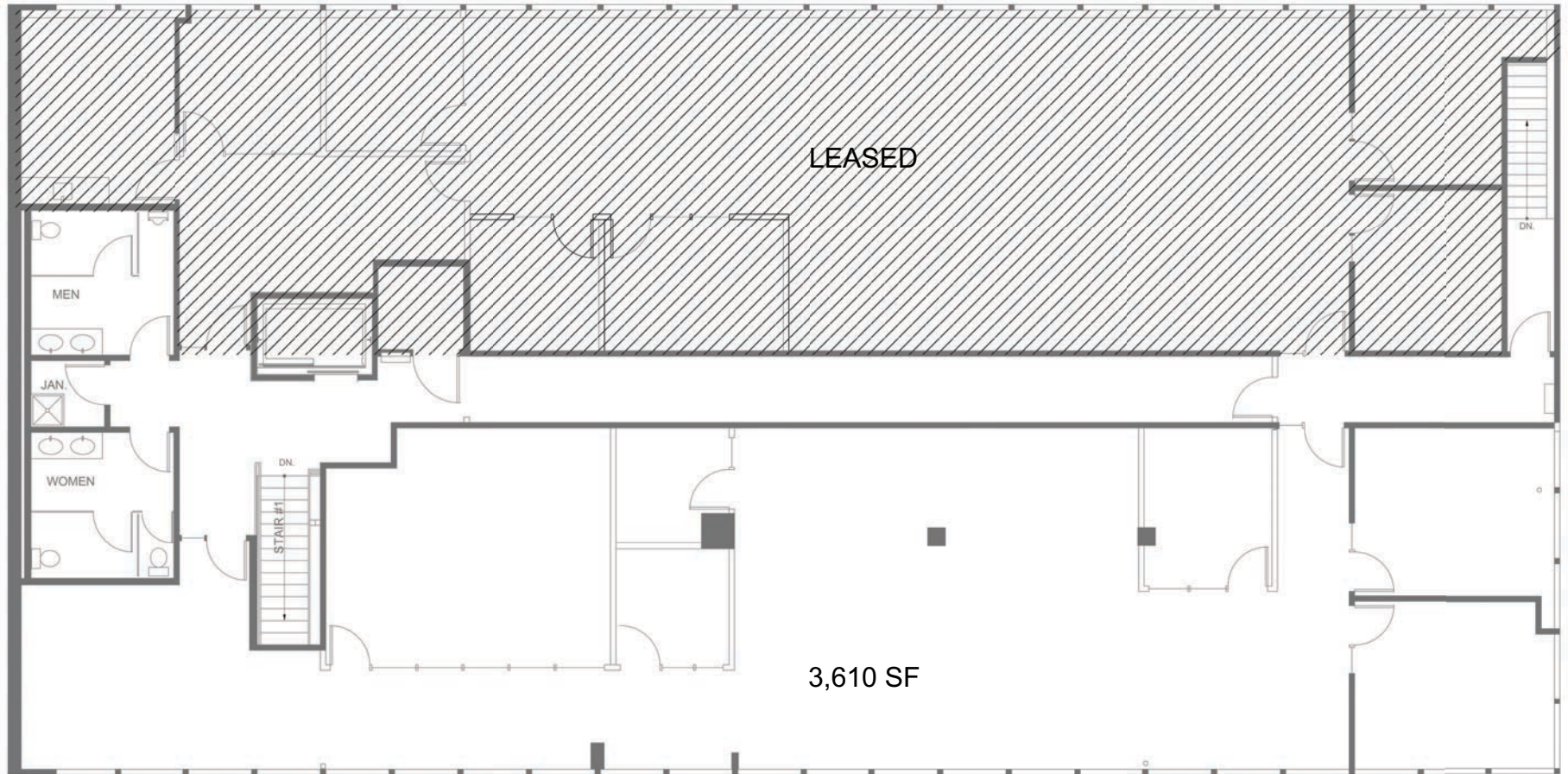
NEWMARK

The information contained herein has been obtained from sources deemed reliable but has not been verified and no guarantee, warranty or representation, either express or implied, is made with respect to such information. Terms of sale or lease and availability are subject to change or withdrawal without notice.

9385889728.02/26

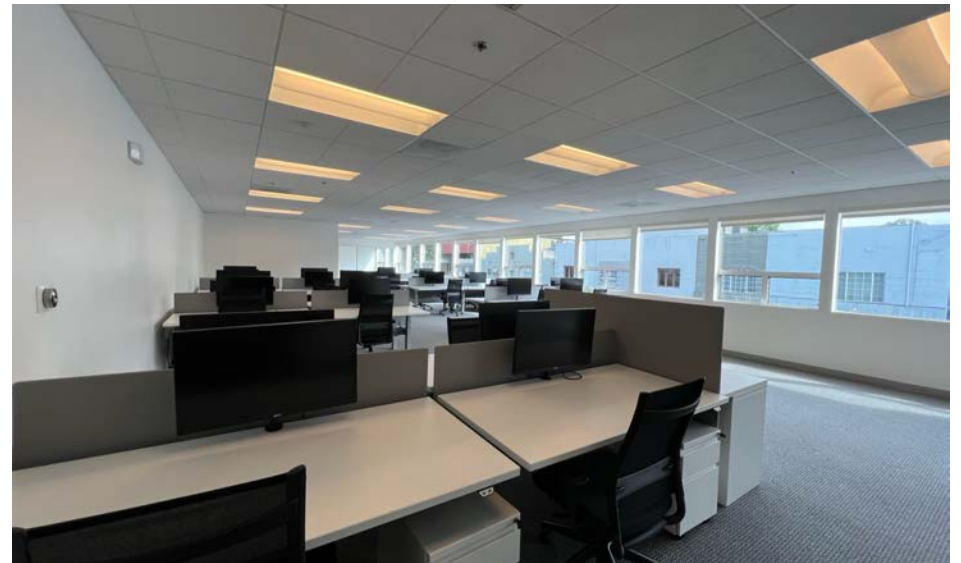
FLOOR PLAN

1010 DOYLE STREET, MENLO PARK



INTERIOR PHOTOS

1010 DOYLE STREET, MENLO PARK







Sam Untrecht

Associate

t 650-815-5647

sam.untrecht@nmrk.com

CA RE License #02238025

Carter Norton

Associate

t 650-208-0068

carter.norton@nmrk.com

CA RE License #02205882

NEWMARK

NMRK.COM