



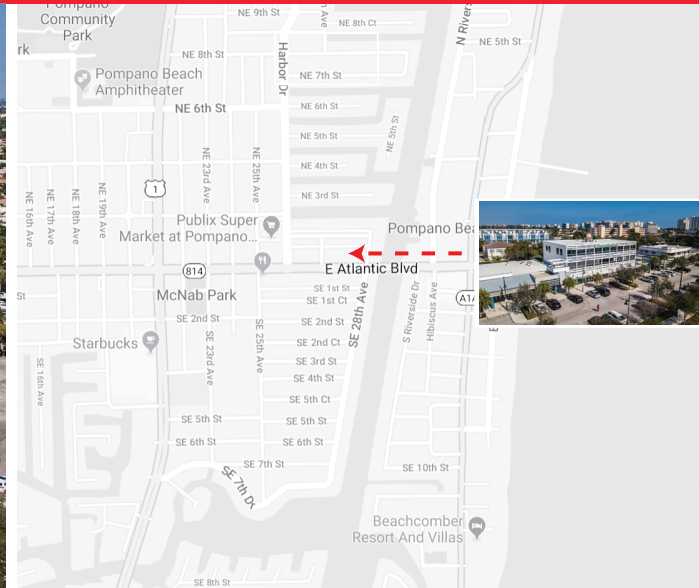
ATLANTIC OFFICE SUITES

2741-2749 E Atlantic Blvd
Pompano Beach, FL 33062

ONE INVESTMENT GROUP
COMMERCIAL REAL ESTATE

FOR LEASE

\$20.00 - \$30.00 /SF/Yr
Central Pompano Beach location
Rentable Building Area: 17,000 SF



**FOR PROPERTY INQUIRES
PLEASE VISIT OUR WEBSITE
OR CALL JOSEPH:**

Joseph Scarfone
Licensed Real Estate Broker
+1 561 945 7772
www.oneinvestmentone.com

2048 E. Sample Rd.
Lighthouse Point, FL 33064
joseph@onegroup1.com

PROPERTY OVERVIEW

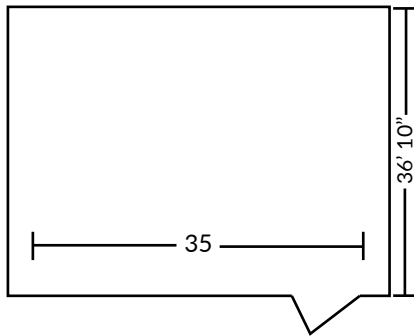
Great East Pompano Beach location! Office space available in Desjardins Bank building, directly on E. Atlantic Blvd. Located in between US-1 & Intracoastal waterway. Close to popular Houston's Restaurant, A1A, Federal Hwy in quickly redeveloping Pompano Beach. Ample parking in rear and from of building, including electric plug in. Building has elevator.

- Central Pompano Beach location
- Restaurants, retail all in walking distance
- Elevator
- Parking

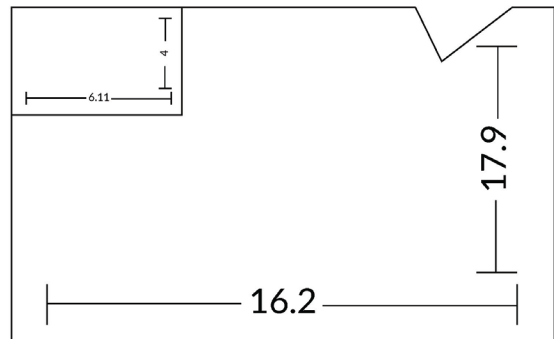
Property Type:	Office
Building Class:	B
Rentable Building Area:	17,000 SF
Walk Score[®]:	83 (Very Walkable)
Transit Score[®]:	36 (Some Transit)
Rental Rate Mo:	\$1.67 USD/SF/Mo

FLOOR PLANS

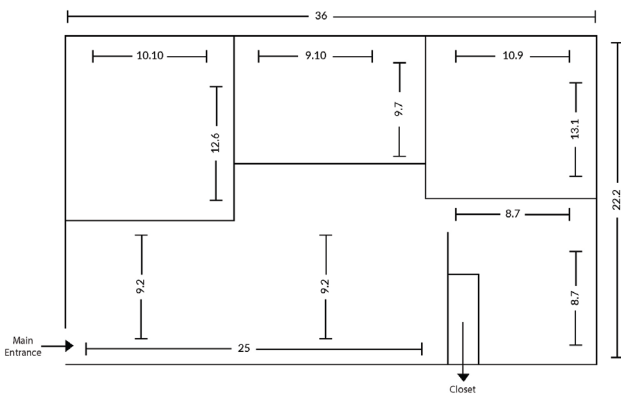
2nd Floor #203
1,270 SF



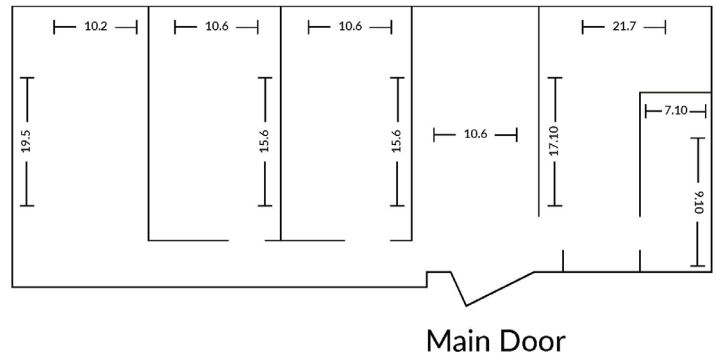
3rd Floor #306
290 SF



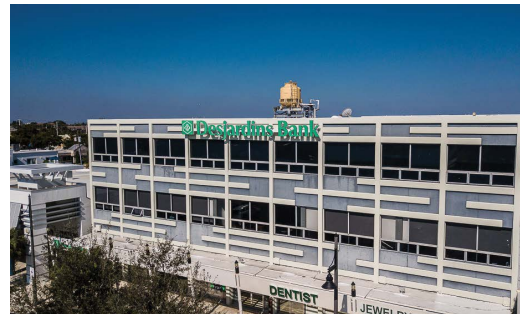
3rd Floor #302
740 SF



3rd Floor #301
1,275 SF



PROPERTY PHOTOS



FOR PROPERTY INQUIRES PLEASE VISIT
OUR WEBSITE OR CALL JOSEPH:

Joseph Scarfone
Licensed Real Estate Broker

+1 561 945 7772

www.oneinvestmentone.com

ONE INVESTMENT GROUP
COMMERCIAL REAL ESTATE

2048 E. Sample Rd.
Lighthouse Point, FL 33064
joseph@onegroup1.com