

01296 398383

info@chandlergarvey.com www.chandlergarvey.com

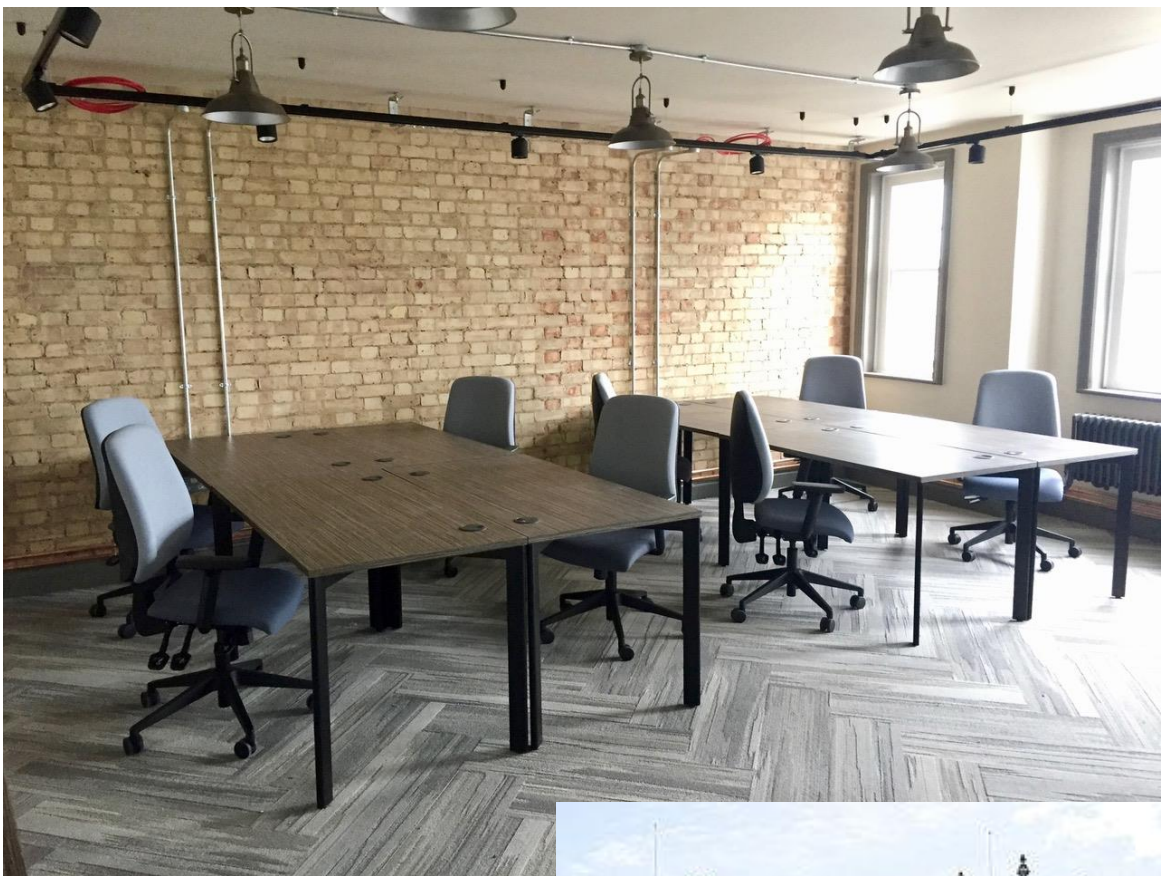
## AYLESBURY

MARKET HOUSE SERVICED OFFICES, HP20 1TN

**TO LET**

**241 SQ FT (22.39 SQ M) to 492 SQ FT (45.71 SQ M)**

**STUNNING NEW MODERN OFFICE SPACE**



**LAUNCH DISCOUNT  
PRICES NOW AVAILABLE**



[www.chandlergarvey.com](http://www.chandlergarvey.com)

Amersham

Tel: +44 (0)1494 723 999

Aylesbury

Tel: +44 (0)1296 398 383

High Wycombe

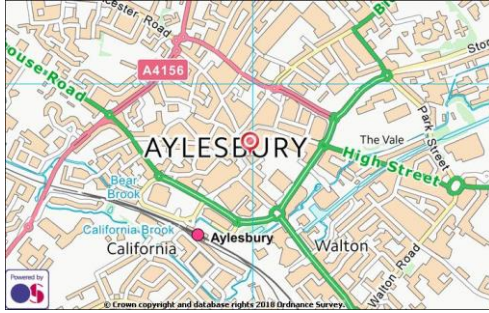
Tel: +44 (0)1494 446 612

Marlow

Tel: +44 (0)1628 902 488

Slough

Tel: +44 (0)1753 725 700



## Location

Market House is in the heart of Aylesbury, the County Town of Buckinghamshire & is located approximately 44 miles northwest of central London 23 miles from Oxford and 15 miles south of Milton Keynes. The town is situated on the junctions of the A41 the A413 and A418 providing easy access to the M40 M1 and M25 motorways, all of which are within a 20 minute drive. The town benefits from a direct rail system to London Marylebone with a journey time of approximately 55 minutes.

## Description

Market House provides first floor office accommodation which has been newly refurbished to a high specification with contemporary furniture and décor.

## Amenities

• Kitchen & break out area	• Fully furnished
• Door entry system	• Bookable meeting rooms
• Monthly rentals	• Male and female Wc's
• Wi-Fi through fast cabled broadband	• All-inclusive rents Inc. tea/coffee & broadband

## Rental & Accommodation

	Size	£ pcm plus VAT
Office 1	492 sq ft	£1,700
Office 2	434 sq ft	£1,700 LET
Office 3 (co-working space)	254 sq ft	£240/desk-3 available
Office 4	245 sq ft	£900 LET
Office 5	241 sq ft	£850
Office 6	174 sq ft	£700 LET
Office 7	325 sq ft	£1,350 LET
Office 8	300 sq ft	£1,350 LET

**LAUNCH DISCOUNT PRICES NOW AVAILABLE**



## Lease

The eight individual offices are to be offered on an all-inclusive basis on either a monthly rolling licence or a longer term to be agreed as required.

## Energy Performance Certificate

TBC

## Legal Costs

Each party to be responsible for their own legal costs involved in the transaction.

## Viewing

By appointment only through:-

Terri Clarke

M. 07789 742547

Email: [tc@chandlergarvey.com](mailto:tc@chandlergarvey.com)

These particulars are for general guidance only and do not constitute any part of an offer or contract. Details are given without any responsibility and any interested party should not rely on them as statements or representations of fact, but must satisfy themselves by inspection or otherwise as to the correctness of each of them. VAT is exclusive unless otherwise stated. MARCH 2019

