

**Evans
Elder
Brown &
Seubert**

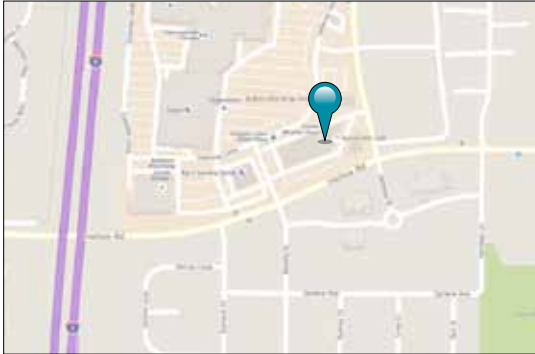
COMMERCIAL REAL ESTATE

101 E. Broadway
Suite 101
Eugene, OR 97401
(541) 345-4860

eebcre.com

FOR LEASE

1028 Harlow Road
Springfield, Oregon



CONTACT

Alan Evans
alan@eebcre.com

Stephanie Seubert
stephanie@eebcre.com

(541) 345-4860

High Traffic Retail Location

Gateway Park

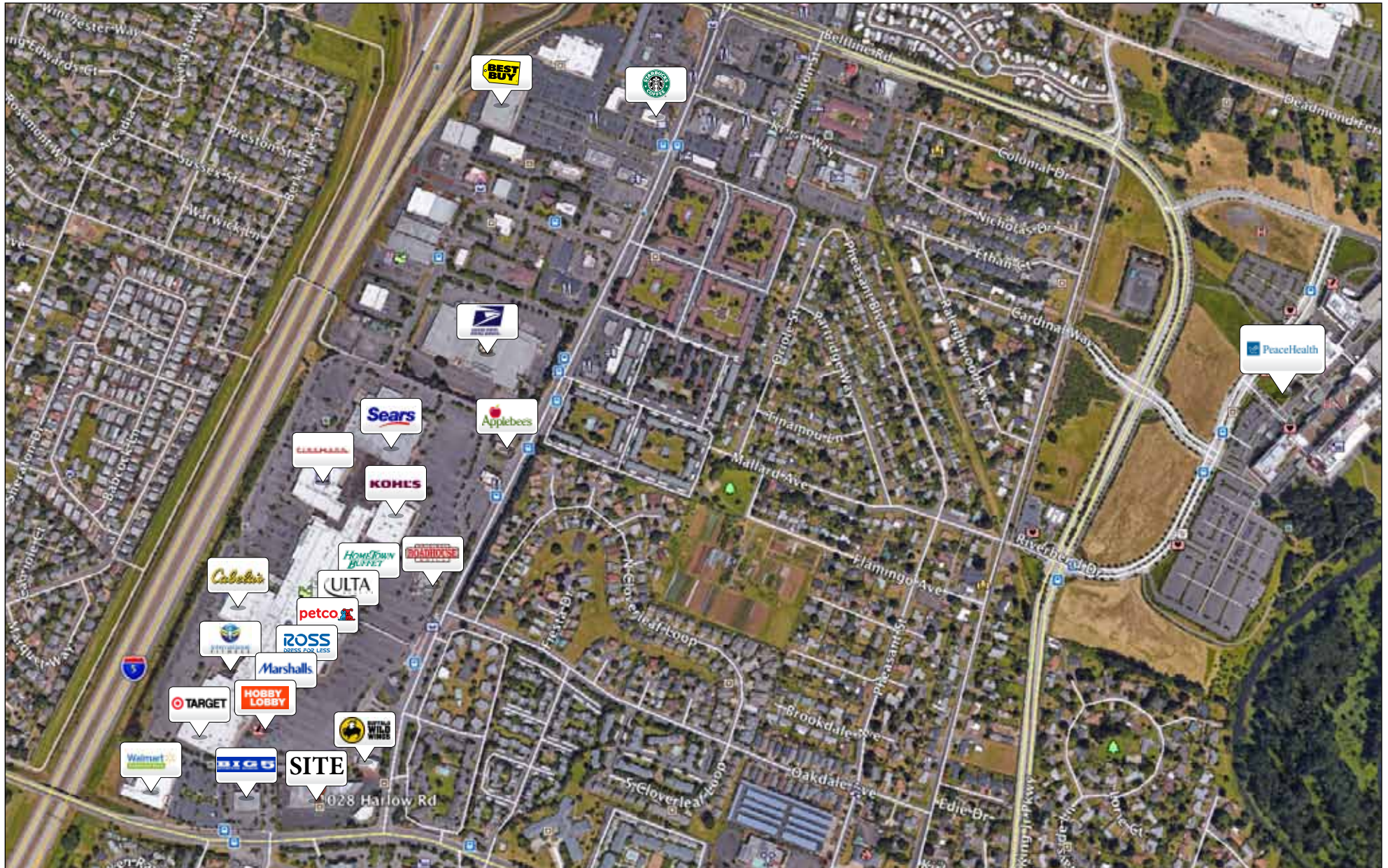
- Approximately 12,400 sf of retail space
- High traffic location near the intersection of Harlow Road and Gateway Street
- Located at a lighted intersection and the South entry to The Shoppes at Gateway
- Tenant Improvement allowance negotiable
- \$15.00 per square foot, triple net

Licensed in the State of Oregon

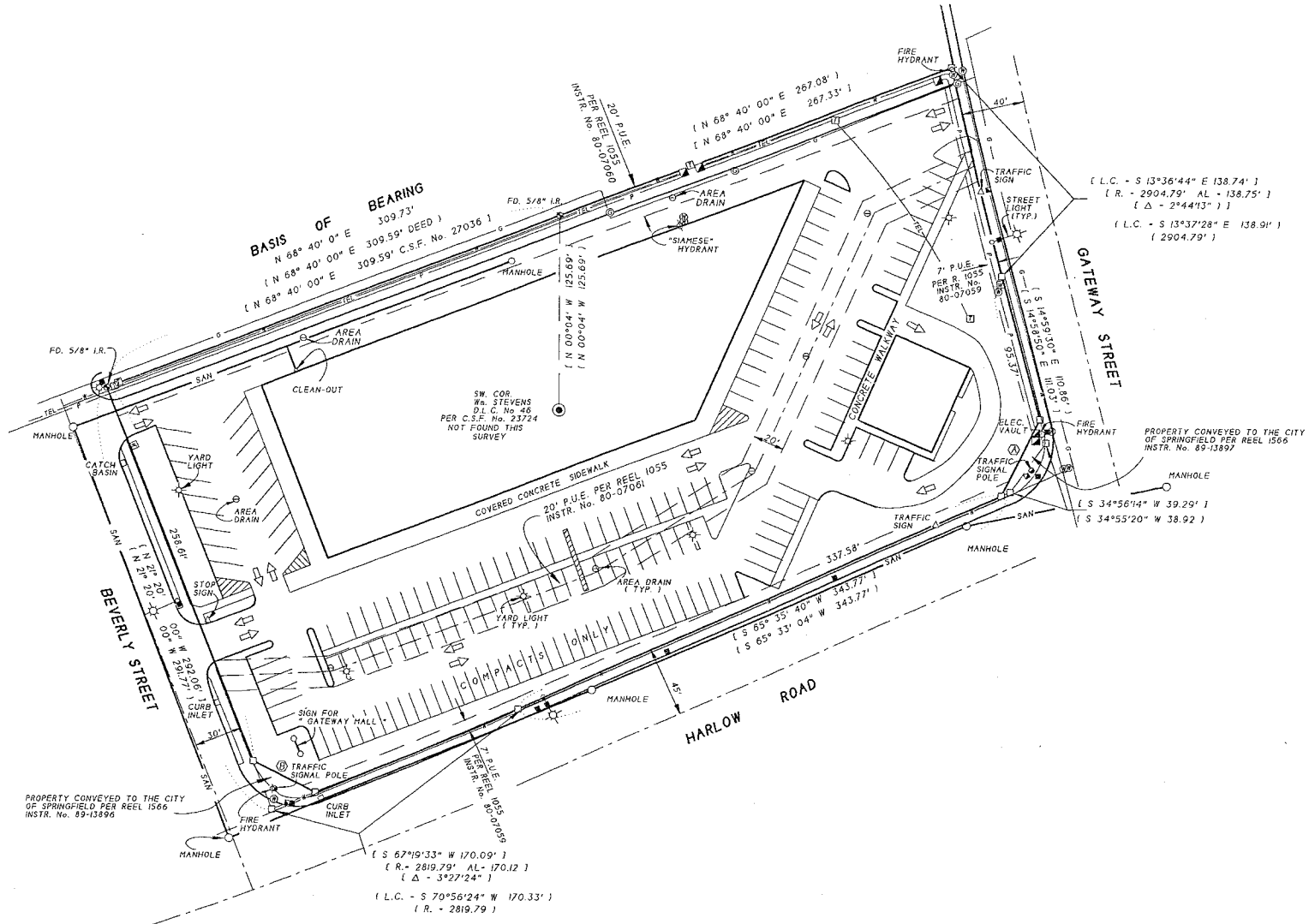


The information in this package was gathered from sources deemed reliable, however Evans Elder Brown & Seubert makes no representation or warranty of the accuracy of the information. Any buyer or tenant considering a purchase or lease of this property should confirm any and all information relied upon in making the decision to purchase or lease prior to finalizing the transaction and bears the risk of all inaccuracies.

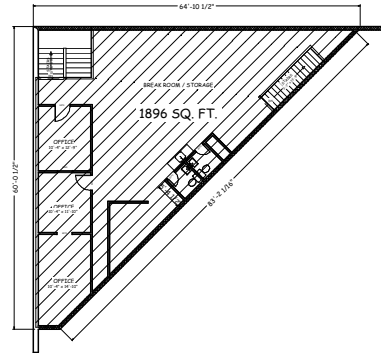
Gateway Aerial



Site Plan



Floor Plan



1896 SQ. FT. **EXISTING MEZANINE FLOOR PLAN**
SCALE: 1" = 30' - 0"

