

±31,265 SF WAREHOUSE

14211 Ramona Avenue | Chino, CA 91710



AVAILABLE FOR LEASE - PRIME CHINO LOCATION!



Property Features

- ±3,120 SF of Office Space
- 5 Dock High Loading Doors (9' x 11')
- 2 Ground Level loading Doors (12' x 14')
- 22' Minimum Warehouse Clearance Height
- Large Secured/Fenced Yard
- 60' Minimum Concrete Loading Apron
- .75 GPM/2,500 SF Calculated Fire Sprinkler System
- 800 Amps, 277/480 Volt, 3 Phase Power
- T5 Warehouse Lighting
- Foil Insulated Ceilings
- Skylights



**Newmark
Knight Frank**

MARK KEGANS, SIOR
Senior Managing Director
909.974.4070 | mkegans@ngkf.com
CA RE License #00866145

RON WASHLE, SIOR
Senior Managing Director
909.974.4071 | rwashle@ngkf.com
CA RE License #00978222

3281 East Guasti Road, Suite 600 | Ontario, CA 91761 | Corporate CA RE #00812184 | www.ngkf.com

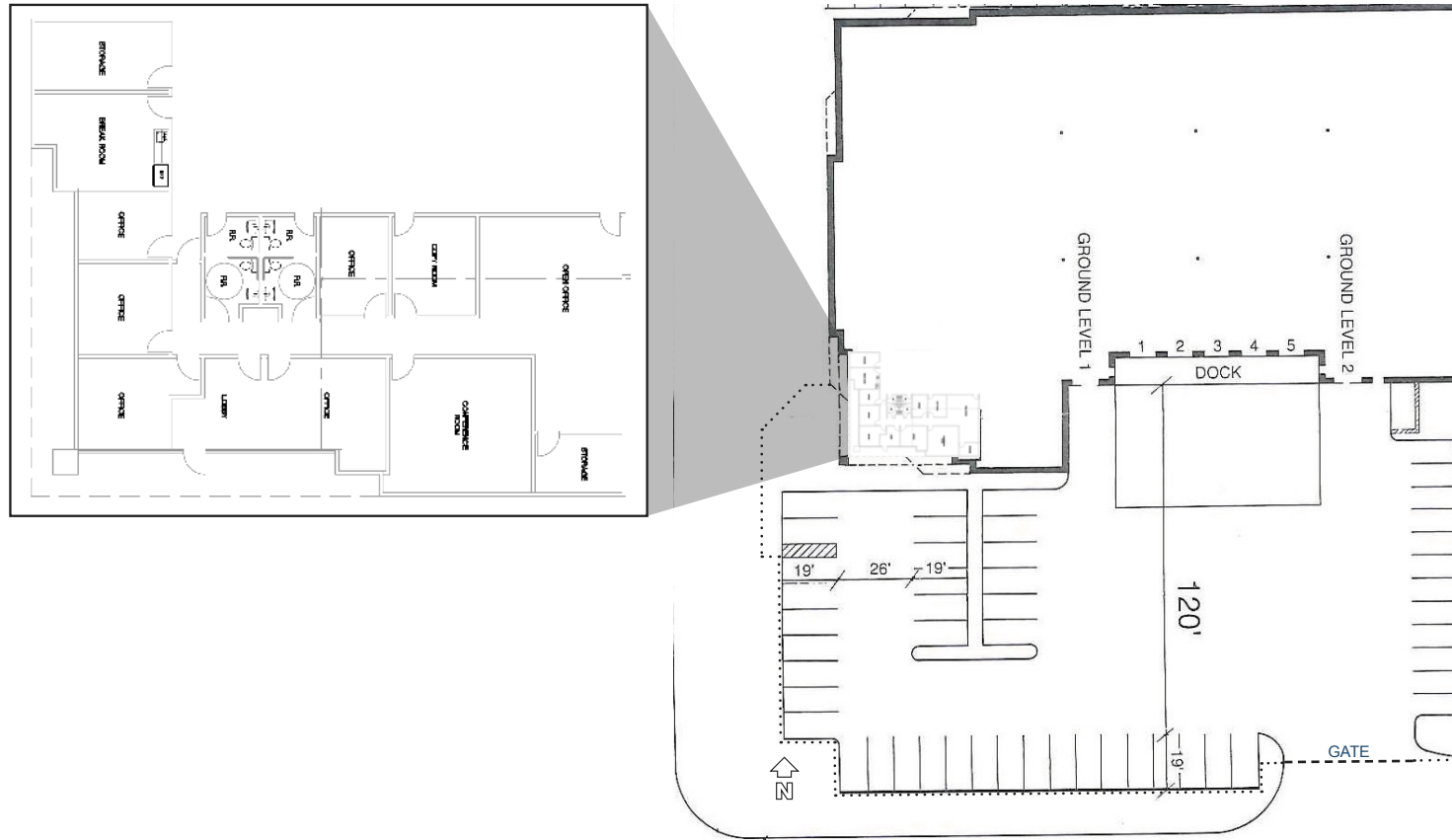
Procuring broker shall only be entitled to a commission calculated in accordance with the rates approved by our principal only if such procuring broker executes a brokerage agreement acceptable to us and our principal and the conditions as set forth in the brokerage agreement are fully and unconditionally satisfied. Although all information furnished regarding property for sale, rental, or financing is from sources deemed reliable, such information has not been verified and no express representation is made nor is any to be implied as to the accuracy thereof and it is submitted subject to errors, omissions, change of price, rental or other conditions, prior sale, lease or financing, or withdrawal without notice and to any special conditions imposed by our principal.

±31,265 SF WAREHOUSE

AVAILABLE FOR LEASE



14211 RAMONA AVENUE | CHINO, CA 91710



**Newmark
Knight Frank**

MARK KEGANS, SIOR
Senior Managing Director
909.974.4070 | mkegans@ngkf.com
CA RE License #00866145

RON WASHLE, SIOR
Senior Managing Director
909.974.4071 | rwashle@ngkf.com
CA RE License #00978222

3281 East Guasti Road, Suite 600 | Ontario, CA 91761 | Corporate CA RE #00812184 | www.ngkf.com

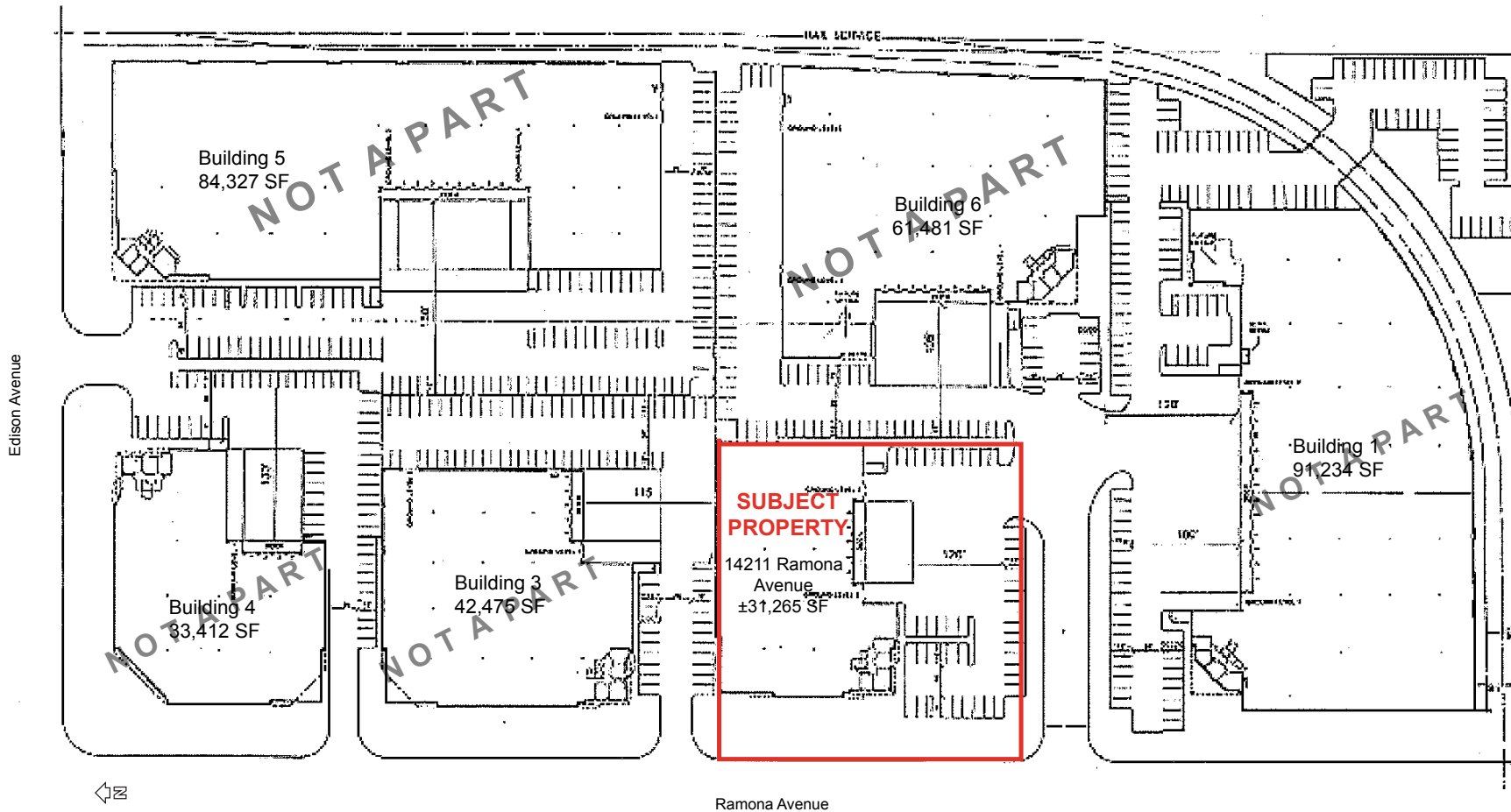
Procuring broker shall only be entitled to a commission calculated in accordance with the rates approved by our principal only if such procuring broker executes a brokerage agreement acceptable to us and our principal and the conditions as set forth in the brokerage agreement are fully and unconditionally satisfied. Although all information furnished regarding property for sale, rental, or financing is from sources deemed reliable, such information has not been verified and no express representation is made nor is any to be implied as to the accuracy thereof and it is submitted subject to errors, omissions, change of price, rental or other conditions, prior sale, lease or financing, or withdrawal without notice and to any special conditions imposed by our principal.

±31,265 SF WAREHOUSE

AVAILABLE FOR LEASE



14211 RAMONA AVENUE | CHINO, CA 91710



**Newmark
Knight Frank**

MARK KEGANS, SIOR
Senior Managing Director
909.974.4070 | mkegans@ngkf.com
CA RE License #00866145

RON WASHLE, SIOR
Senior Managing Director
909.974.4071 | rwashle@ngkf.com
CA RE License #00978222

3281 East Guasti Road, Suite 600 | Ontario, CA 91761 | Corporate CA RE #00812184 | www.ngkf.com

Procuring broker shall only be entitled to a commission calculated in accordance with the rates approved by our principal only if such procuring broker executes a brokerage agreement acceptable to us and our principal and the conditions as set forth in the brokerage agreement are fully and unconditionally satisfied. Although all information furnished regarding property for sale, rental, or financing is from sources deemed reliable, such information has not been verified and no express representation is made nor is any to be implied as to the accuracy thereof and it is submitted subject to errors, omissions, change of price, rental or other conditions, prior sale, lease or financing, or withdrawal without notice and to any special conditions imposed by our principal.

±31,265 SF WAREHOUSE

AVAILABLE FOR LEASE



14211 RAMONA AVENUE | CHINO, CA 91710



**Newmark
Knight Frank**

MARK KEGANS, SIOR
Senior Managing Director
909.974.4070 | mkegans@ngkf.com
CA RE License #00866145

RON WASHLE, SIOR
Senior Managing Director
909.974.4071 | rwashle@ngkf.com
CA RE License #00978222

3281 East Guasti Road, Suite 600 | Ontario, CA 91761 | Corporate CA RE #00812184 | www.ngkf.com

Procuring broker shall only be entitled to a commission calculated in accordance with the rates approved by our principal only if such procuring broker executes a brokerage agreement acceptable to us and our principal and the conditions as set forth in the brokerage agreement are fully and unconditionally satisfied. Although all information furnished regarding property for sale, rental, or financing is from sources deemed reliable, such information has not been verified and no express representation is made nor is any to be implied as to the accuracy thereof and it is submitted subject to errors, omissions, change of price, rental or other conditions, prior sale, lease or financing, or withdrawal without notice and to any special conditions imposed by our principal.