



**Jewel-Osco**

**9,250 ADT**



**Bartlett Rd**

**0.60 Acre  
Outlot**



**Stearns Rd**



**14,500 ADT**

# **Jewel-Osco** **OUTLOTS**

**BARTLETT, IL**  
**SEC STEARNS RD AND**  
**BARTLETT RD**

# OUTLOTS AVAILABLE BARTLETT, IL

Southeast corner of Stearns Rd & Bartlett Rd

SITE  
PLAN

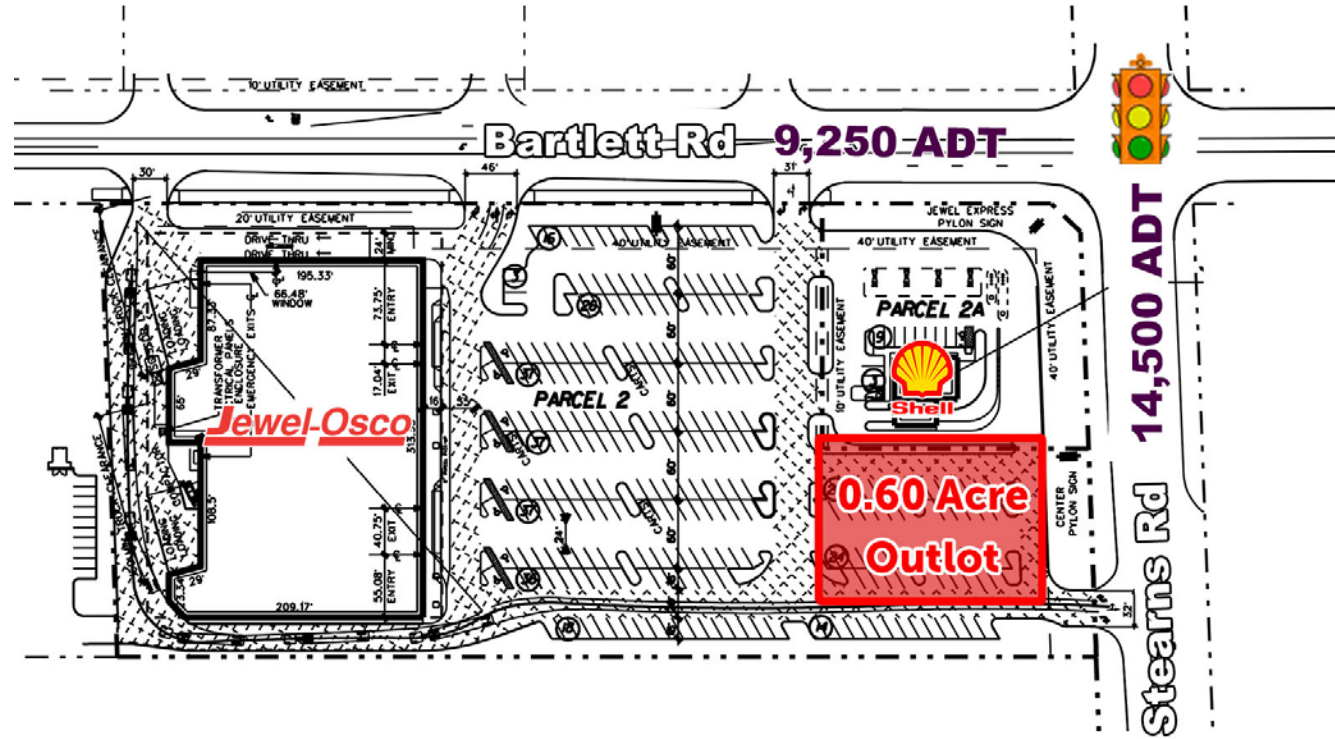
## LAND AVAILABLE

0.60 Acres

## SITE SUMMARY

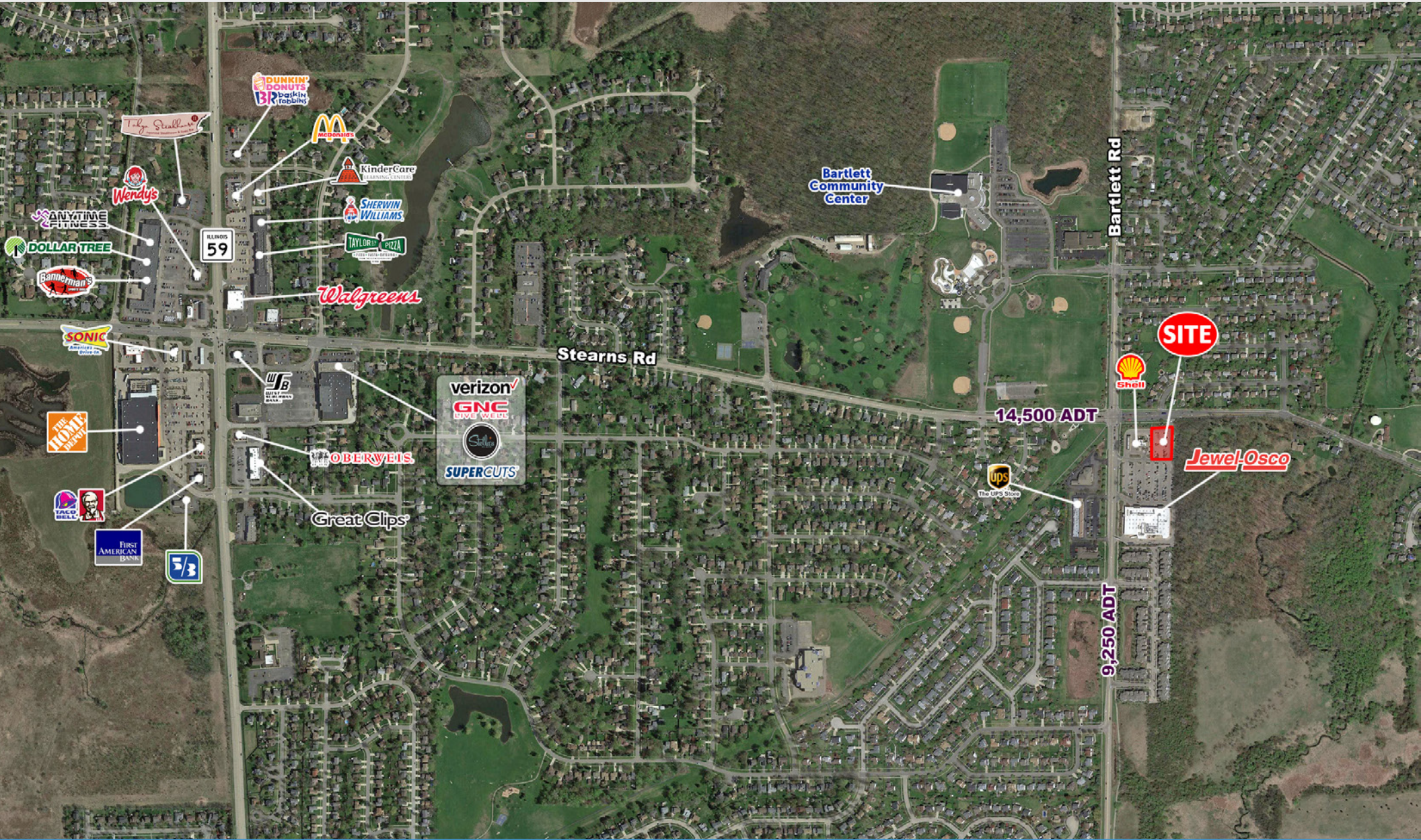
- This property is strategically located at the intersection of Stearns Road (14,500 ADT) and Bartlett Road (9,250 ADT).
- This outlet is directly in front of Jewel Osco and is highly visible and easily accessible via several curb cuts.
- Area retailers include Home Depot, Oberweis, First American Bank, West Suburban Bank, Walgreens, and the UPS Store.

POPULATION DENSITY	10,652	1 Mile
	82,354	3 Mile
	212,924	5 Mile
AVERAGE HH INCOME	\$102,212	1 Mile
	\$86,673	3 Mile
	\$88,960	5 Mile



# OUTLOTS AVAILABLE BARTLETT, IL

Southeast corner of Stearns Rd & Bartlett Rd



## CONTACT

Matt Cavanagh  
matt@arcgrp.com  
(630) 908-5694

Andy Robbins  
arobbins@arcgrp.com  
(630) 908-5707

© 2019 A+R-C Real Estate. All information is from sources believed reliable, not independently verified, and thus subject to errors, omissions, and modifications such as price, listing, square footage, rates and commissions. All information, estimates and projections subject to change, market assumptions, unknown facts and conditions, and future potentialities. A+R-C Real Estate makes no express or implied representations or warranties, as facts and results may vary materially from all information, estimates and projections. All renderings presented are conceptual.

