

Hunt River Commons

20 Frenchtown Road

North Kingstown, Rhode Island 02852



Location - Washington County

- Located in North Kingstown, RI, just south of Warwick and East Greenwich
- 11,556 AADT on Frenchtown Road and 25,839 AADT on Post Road
- Direct, easy access to three major roads: RI 4, Route 403 and Route 1
- The center serves a very affluent customer base, with an average household income of \$117,845 within a 3 miles
- Signalized entrance on Frenchtown Road

Center

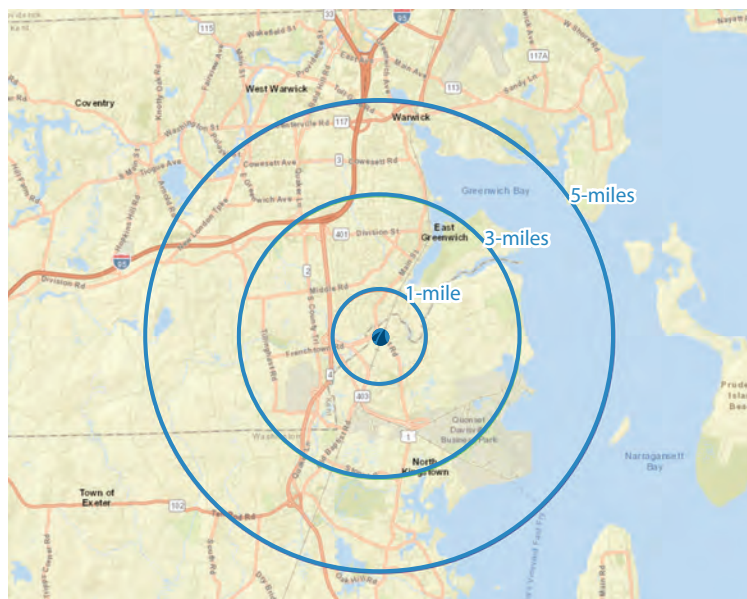
- 149,321 SF Grocery Anchored Community Center with Stop & Shop, Marshalls and Planet Fitness
- Other tenants include Great Clips, Sprint, Citizens Bank and Rhode Eyeland
- Available Spaces:
 - 1,200 SF
 - 2,000 SF
 - 2,400 SF
 - 4,548 SF
 - 21,894 SF

NOW LEASING:

1,200 SF - 21,894 SF

Demographics (2020 Estimates)

	1-mile radius	3-mile radius	5-mile radius
Population	4,203	24,580	62,398
Average HH Income	\$128,576	\$133,815	\$117,845



Disclaimer: While Broad Reach Retail Partners, LLC and its affiliates believe the information contained herein to be true and accurate, they make no claims or warranties. Any prospective tenant should conduct thorough, independent due diligence.

For Leasing Information:
leasing@broadreachretail.com
800.307.3130 Ext. 1

www.broadreachretail.com

Hunt River Commons

20 Frenchtown Road

North Kingstown, Rhode Island 02852

Site Plan



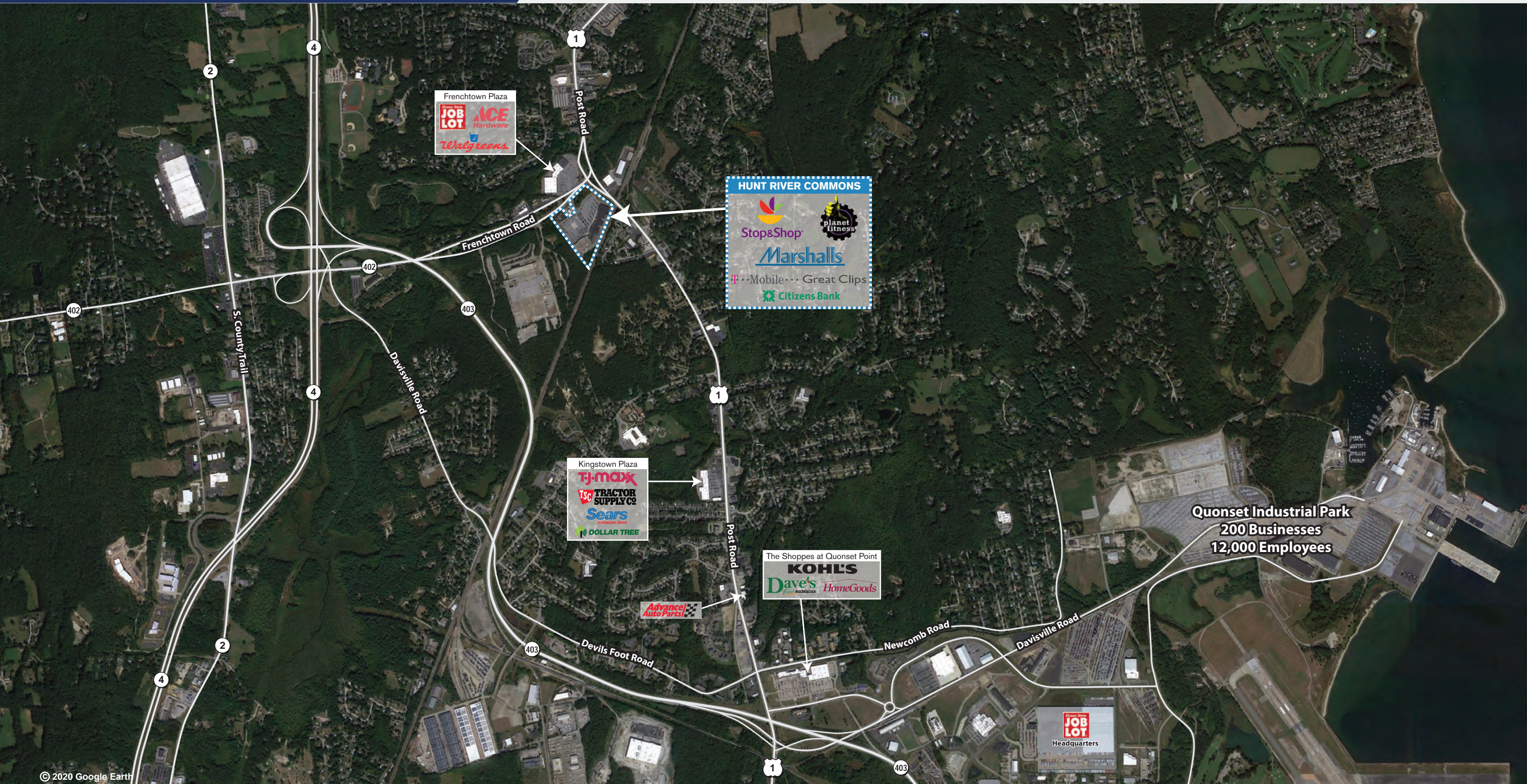
Suite	Tenant	SF
1	Marshall's	35,820
2	Available	4,548
3	Great Clips	1,400
4	T-Mobile	1,400
5/6	Planet Fitness	12,363
7	Available	2,400
8	Available	21,894
9	Available	1,200
10	Available	2,000
11	Rhode Eyeland	2,500
12	Stop & Shop	59,245
13	Citizens Bank	<u>2,500</u>
Total GLA		147,270



Disclaimer: While Broad Reach Retail Partners, LLC and its affiliates believe the information contained herein to be true and accurate, they make no claims or warranties. Any prospective tenant should conduct thorough, independent due diligence.

For Leasing Information:
leasing@broadreachretail.com
800.307.3130 Ext. 1

www.broadreachretail.com



© 2020 Google Earth

Disclaimer: While Broad Reach Retail Partners, LLC and its affiliates believe the information contained herein to be true and accurate, they make no claims or warranties. Any prospective tenant should conduct thorough, independent due diligence.

For Leasing Information:
leasing@broadreachretail.com
800.307.3130 Ext. 1

www.broadreachretail.com