

FULL FLOOR BEVERLY HILLS OFFICE SPACES FOR LEASE



421 S. BEVERLY DRIVE
BEVERLY HILLS, CA 90212

cag | COMMERCIAL
ASSET GROUP

AVAILABLE

±4,300-8,600 SF*

SPACES

6TH FLOOR: ±4,300 SF

8TH FLOOR: ±4,300 SF

TIMING

JANUARY 1, 2018

RENTAL RATE

\$4.00-\$4.25 PSF

MODIFIED GROSS

PARKING

3:1,000

- RARE FULL FLOOR BEVERLY HILLS OPPORTUNITY UNDER 5,000 SF

- BUILDING CONTAINS ALL **CREATIVE BUILDOUTS**

- 6TH FLOOR CURRENTLY HAS AN AMAZING HIGH END BUILDOUT WITH PERIMETER OFFICES, BEAUTIFUL LOBBY, A GLASS CONFERENCE ROOM, LARGE BULLPEN AND HIGH END LARGE OPEN KITCHEN

- 8TH FLOOR IS DUE FOR RENOVATION AND **LANDLORD WILL BUILT TO SUIT**

- EXCELLENT 3:1000 PARKING RATIO

- WALKING DISTANCE TO AN ABUNDANT AMOUNT OF FOOD CHOICES ON SOUTH BEVERLY DRIVE

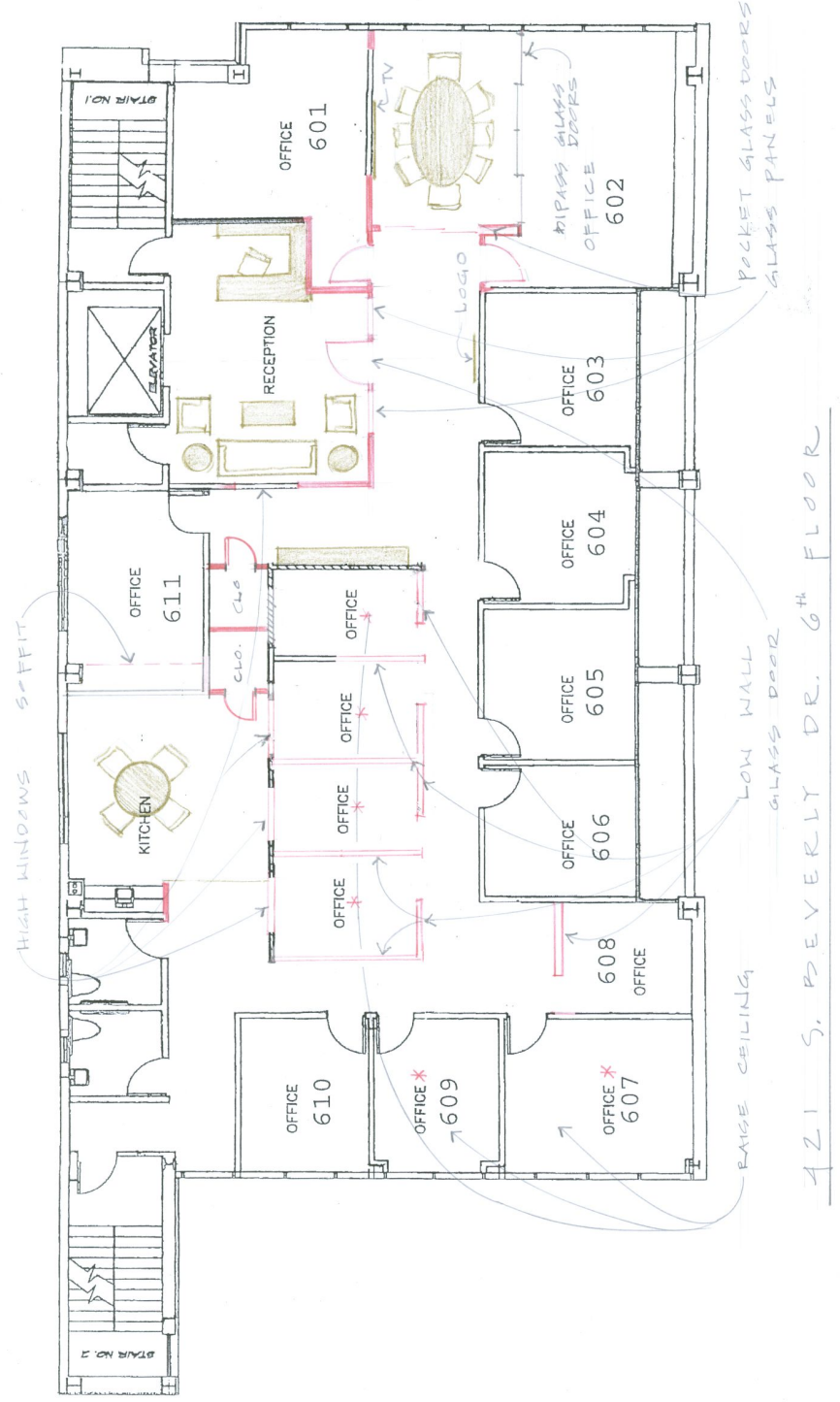
- AMAZING **4 HOUR METERED STREET PARKING** FOR GUESTS

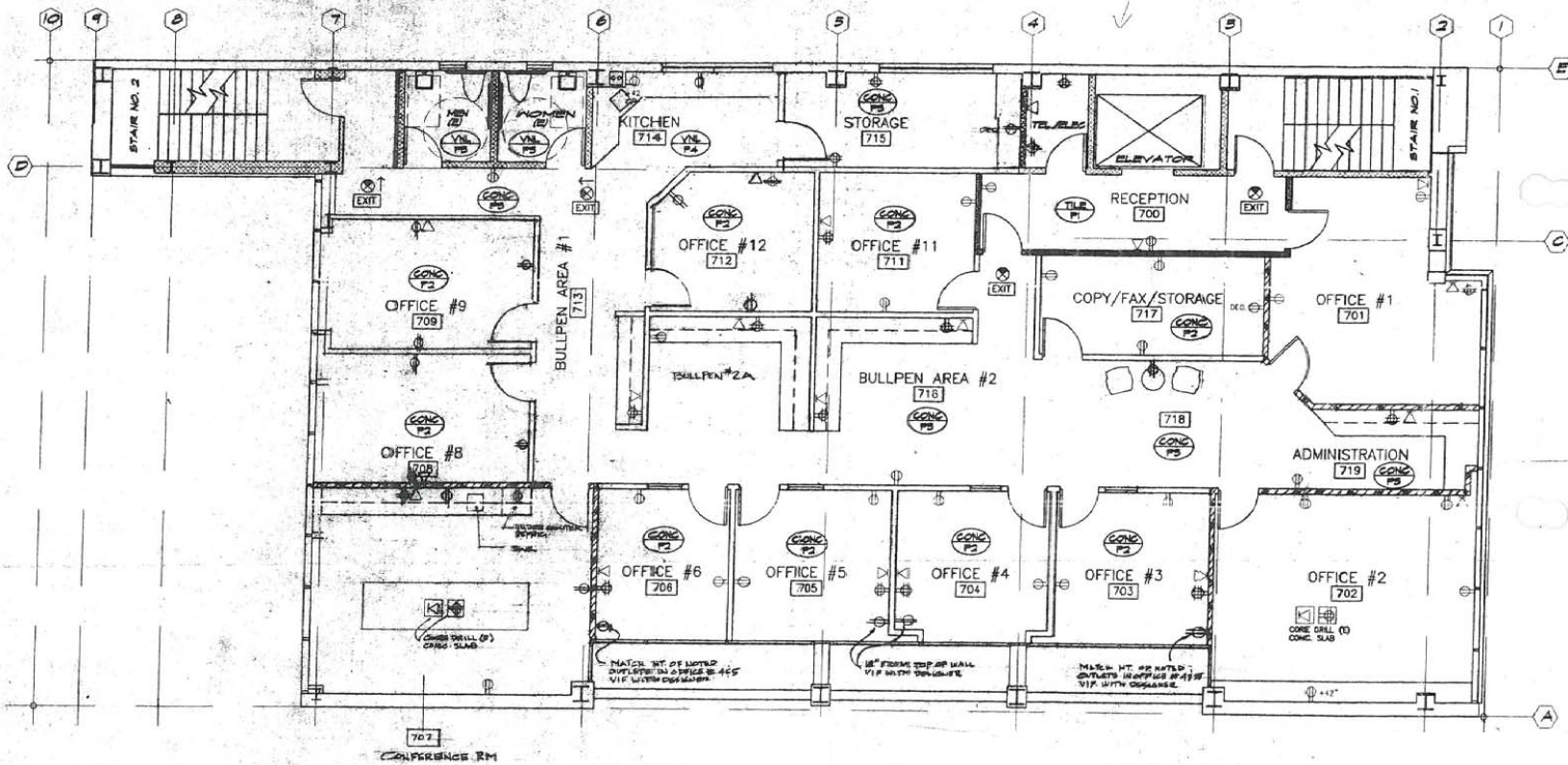
*Ownership currently occupies the 5th floor. Should an 8,600 SF Tenant wish to occupy 2 contiguous floors with an internal staircase, ownership will relocate to the 8th floor.

These materials are based on information and content provided by others, which we believe are accurate. No guarantee, warranty or representation is made by Commercial Asset Group, Inc. or its personnel. All interested parties must independently verify accuracy and completeness. As well, any projections, assumptions, opinion, or estimates are used for example only and do not represent the current or future performance of the identified property. Your tax, financial, legal and toxic substance advisors should conduct a careful investigation of the property and its suitability for your needs, including land use limitations. The property is subject to prior lease, sale, change in price, or withdrawal from the market without notice.



FLOOR PLAN
(6TH FLOOR)





FLOOR PLAN

(8TH FLOOR)



1 BEVERLY HILLS TRIANGLE

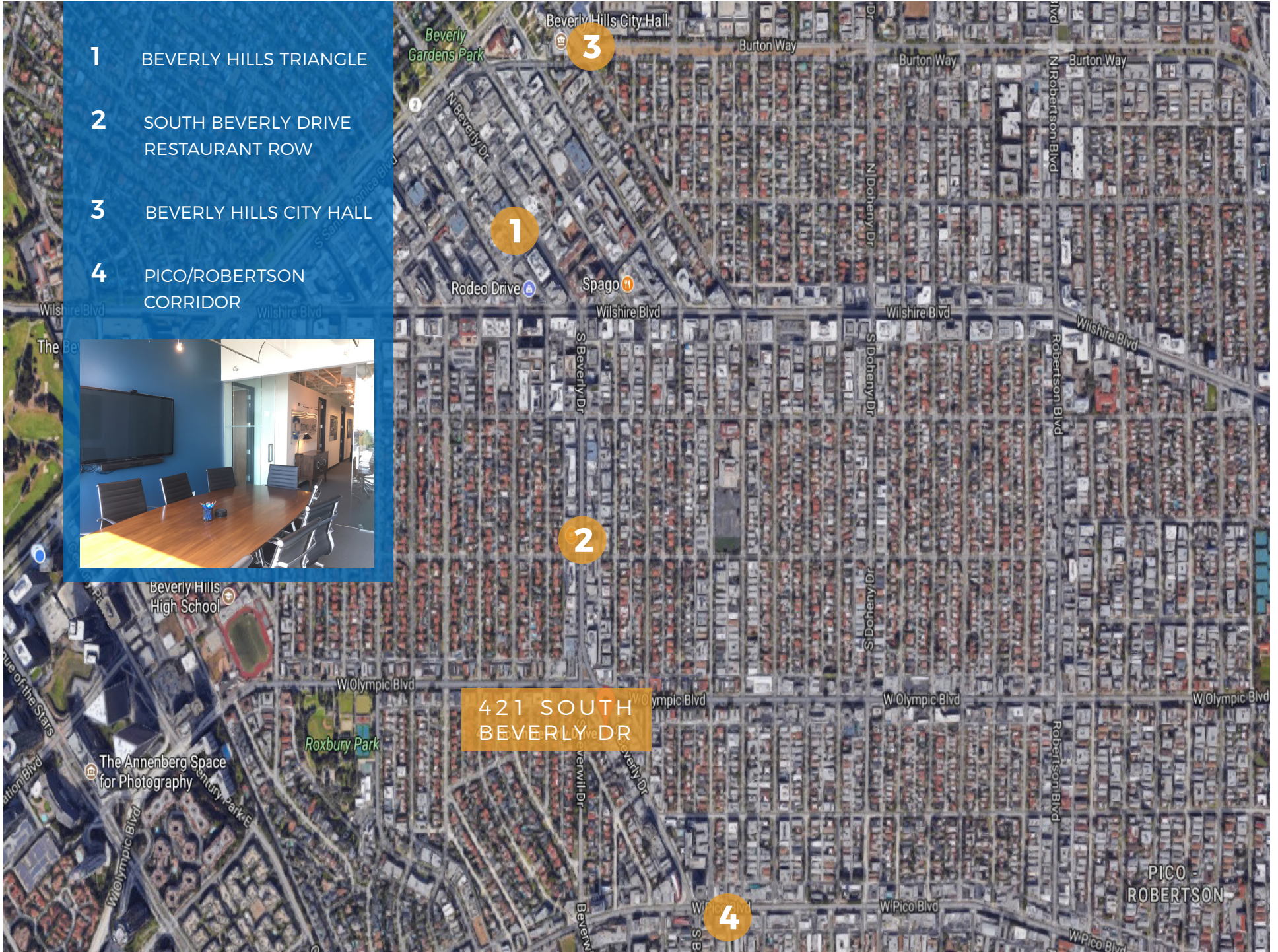
2 SOUTH BEVERLY DRIVE
RESTAURANT ROW

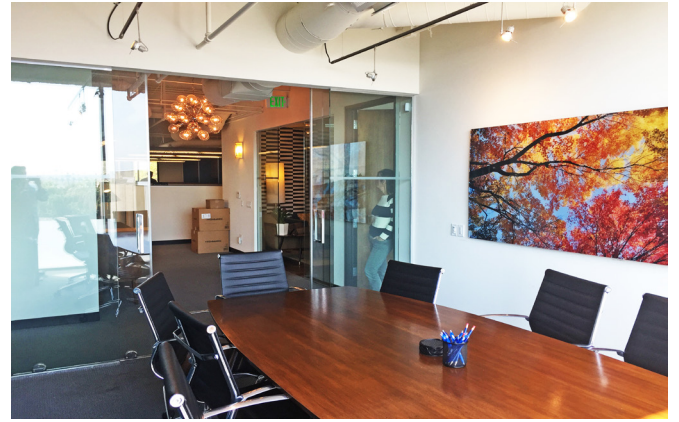
3 BEVERLY HILLS CITY HALL

4 PICO/ROBERTSON
CORRIDOR



421 SOUTH
BEVERLY DR





PROPERTY PHOTOS

DAVID ASCHKENASY

SENIOR MANAGING DIRECTOR

P 310.272.7381

E DAVIDA@CAG-RE.COM

LIC. 01714442

DAVID ICKOVICS

PRINCIPAL

P 310.272.7380

E DJ1@CAG-RE.COM

LIC. 01315424

RYAN SCHIMEL

DIRECTOR

P 310.272.7384

E RYANS@CAG-RE.COM

LIC. 01879511

COMMERCIAL ASSET GROUP

1801 CENTURY PARK EAST, STE 1420

LOS ANGELES, CA 90067

P 310.275.8222 F 818.385.1470

WWW.CAG-RE.COM LIC. 01876070