



FOR LEASE

Horizon Professional Building

595 Hurricane Shoals / Lawrenceville, GA 30046

CLASS A MEDICAL OFFICE



43,500 SF Class A Medical Office

Horizon Professional Building's convenient access to major thoroughfares, close proximity to Gwinnett Medical Center and downtown Lawrenceville make it a premier opportunity for tenants seeking space in the Lawrenceville area.

The property has the unique capability to accommodate both professional office users and healthcare providers. First generation space is available, allowing tenants to customize their space plans and construct their suites to the tenant's exact specifications.

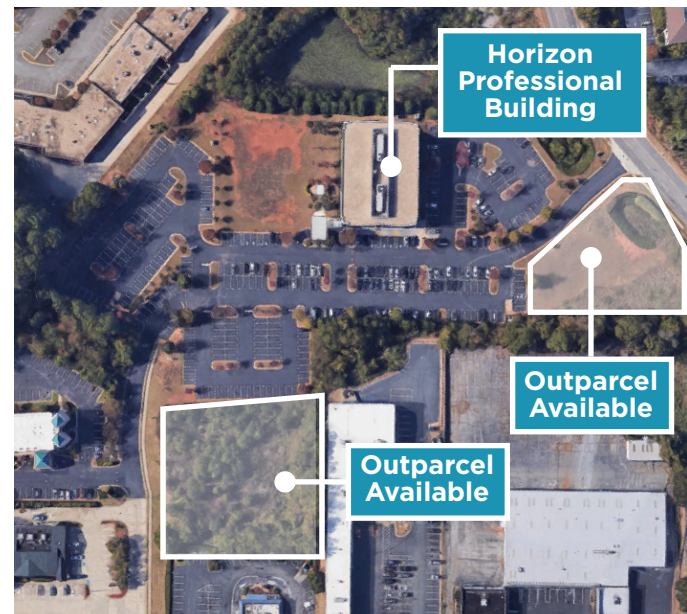
Property Highlights

- First-Generation Space- Designed and Built to Meet Tenant's Needs
- Generous Tenant Improvement Packages
- Ample parking
- aggressive terms

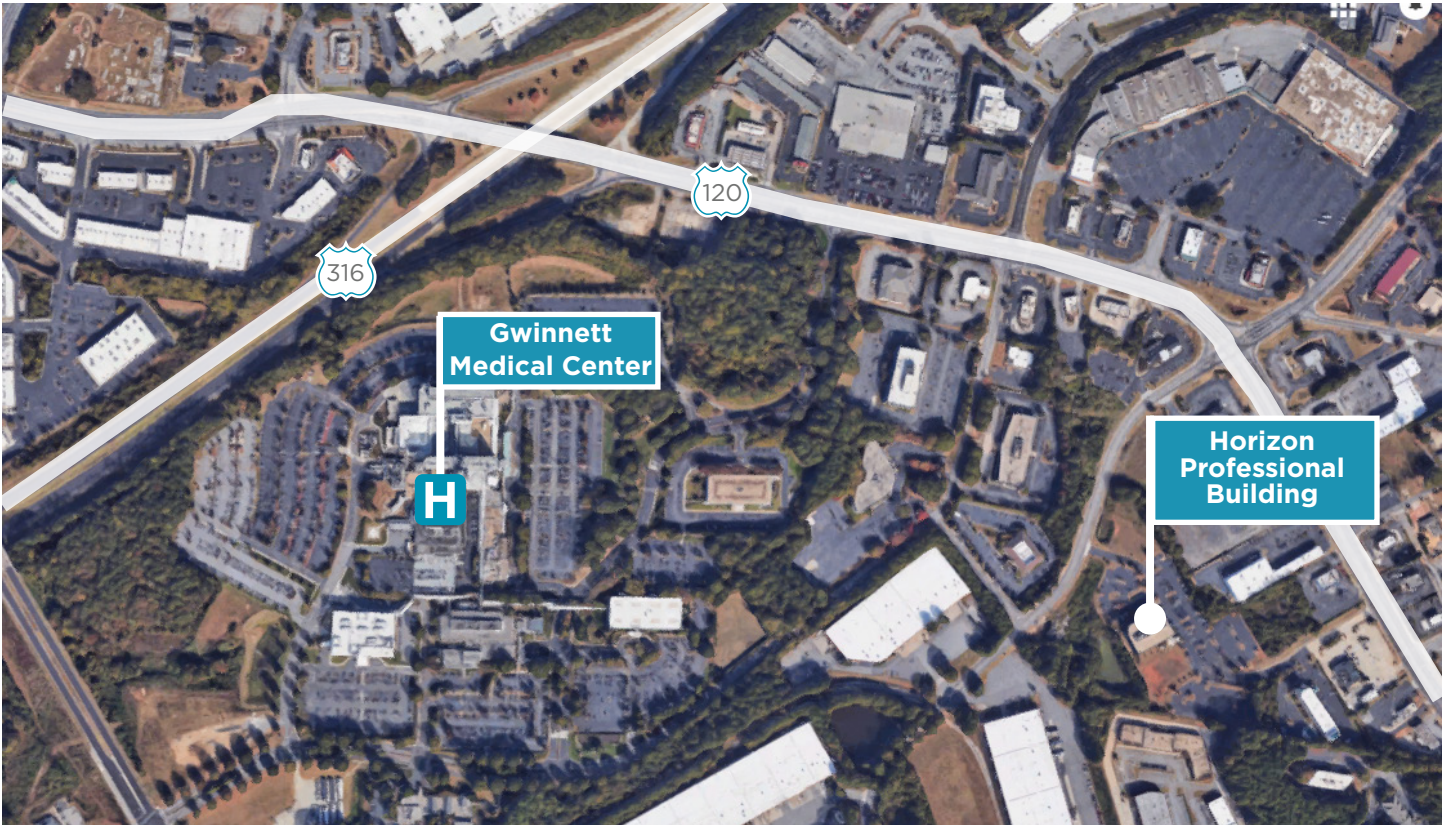
Brandon Wallace
Senior Director
+1 404 267 0195
brandon.wallace@cushwake.com

George Olmstead
Senior Director
+1 404 853 5361
george.olmstead@cushwake.com

171 17th Street, Suite 1400
Atlanta, GA
cushmanwakefield.com



Location



Space Available

Floor	Size
First Floor	2,949 RSF
Third Floor	1,500-4,123 RSF

Brandon Wallace
Senior Director
+1 404 267 0195
brandon.wallace@cushwake.com

George Olmstead
Senior Director
+1 404 853 5361
george.olmstead@
cushwake.com

171 17th Street, Suite 1400
Atlanta, GA
cushmanwakefield.com