



91-571 Nukuawa St  
Kapolei, HI 96707

Industrial Space  
for Lease

**William Froelich (B) JD SIOR CCIM**  
Senior Vice President  
808 523 9711  
william.froelich@colliers.com

Colliers International | Hawaii  
220 S. King Street, Suite 1800 | Honolulu, HI 96813  
808 524 2666  
www.colliers.com/hawaii





### THE PROPERTY

Opportunity to lease a very high cube stand alone warehouse facility on 1.64 acres of I-3 zoned property. This stand alone property includes two sunken loading docks, over 40 foot ceilings, 5 very large electronic rollup doors, built out never occupied offices, ample parking and paved yard space.

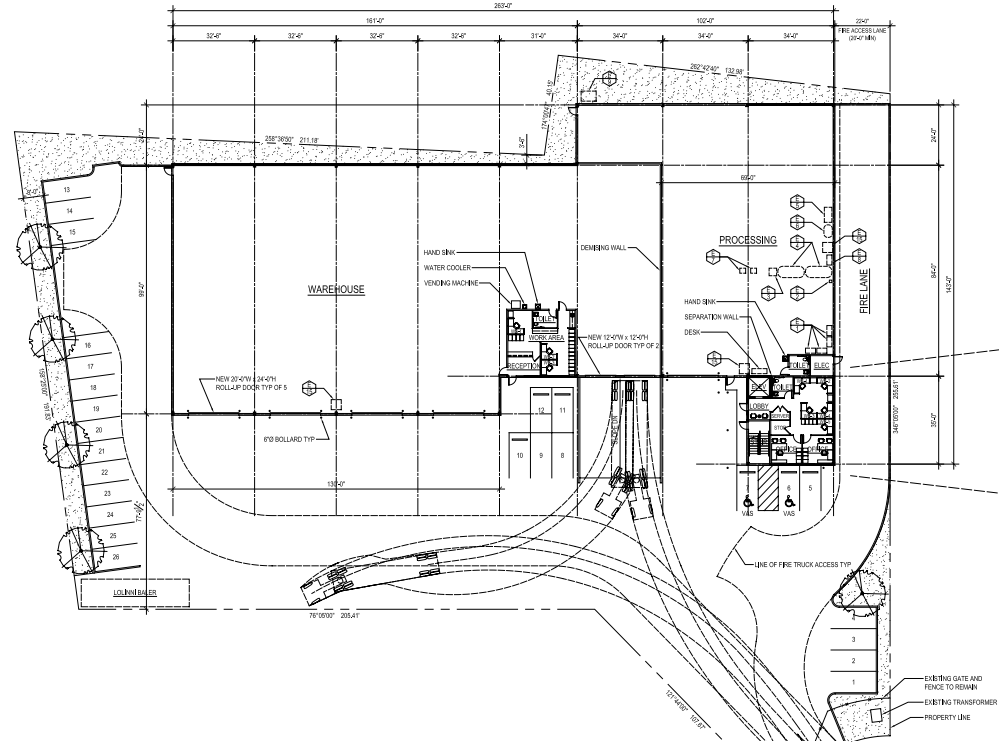
### PROPERTY HIGHLIGHTS

Address	91-571 Nukuawa St, Kapolei, HI
Area	Kenai Industrial Park
TMK	1-9-1-74-50
Zoning	I-3
Rent	\$1.35 PSF/Mo
Operating Expenses	TBD
Building Size	26,286 SF Warehouse 2,380 SF Office 28,666 SF Total
Term	Negotiable

### CONTACT

**William Froelich (B) JD SIOR CCIM**  
Senior Vice President  
808 523 9711  
william.froelich@colliers.com





**William Froelich (B) JD SIOR CCIM**  
 Senior Vice President  
 808 523 9711  
 william.froelich@colliers.com

This document has been prepared by Colliers International for advertising and general information only. Colliers International makes no guarantees, representations or warranties of any kind, expressed or implied, regarding the information including, but not limited to, warranties of content, accuracy and reliability. Any interested party should undertake their own inquiries as to the accuracy of the information. Colliers International excludes unequivocally all inferred or implied terms, conditions and warranties arising out of this document and excludes all liability for loss and damages arising there from. This publication is the copyrighted property of Colliers International and/or its licensor(s). ©2020. All rights reserved.

Colliers International | Hawaii  
 220 S. King Street, Suite 1800 | Honolulu, HI 96813  
 808 524 2666  
 www.colliers.com/hawaii

