

FOR SALE > ±39.3 ACRE LAND PARCEL

# Stoddard Rd. North of Kiernan Ave.



COUNTY OF STANISLAUS, ADJACENT TO THE CITY OF MODESTO, CA



## Property Summary

- > Location: Located on Stoddard Road across from the PSI Corporate Campus.
- > Size: ±39.3 acres
- > Zoning: Designated Commercial Industrial
- > Price: \$4,913,000 (\$2.87/SF)
- > Terms: All cash or negotiable. Seller willing to finance the purchase to a qualified Buyer.
- > APN: 003-018-015

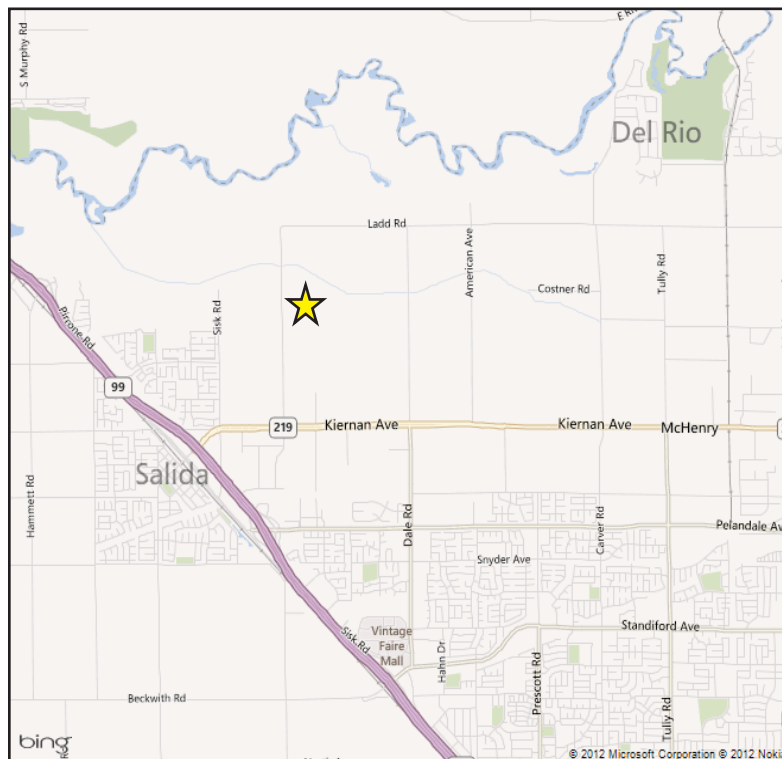
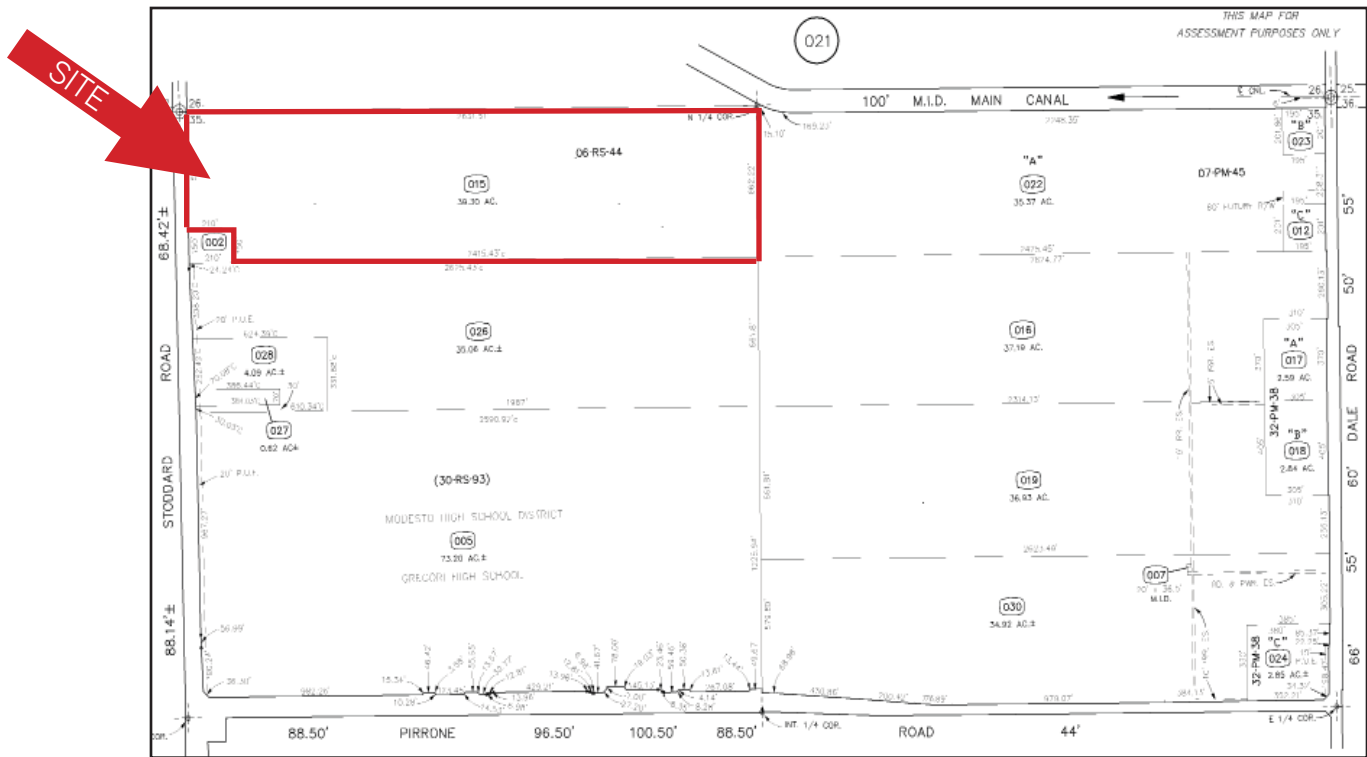
AGENT: BEAU PLUMLEE  
559 221 1271 | EXT. 111  
FRESNO, CA  
beau.plumlee@colliers.com  
DRE #01269167

AGENT: BOBBY FENA, SIOR  
559 221 1271 | EXT. 106  
FRESNO, CA  
bobby.fena@colliers.com  
DRE #00590204

COLLIERS INTERNATIONAL  
7485 N. Palm Avenue, #110  
Fresno, CA 93711  
www.colliers.com/fresno

# Land Parcel for Sale

Stoddard Road North of Kiernan Avenue  
County of Stanislaus, adjacent to the City of Modesto, California



## Contact Us

AGENT: BEAU PLUMLEE  
559 221 1271 | EXT. 111  
FRESNO, CA  
[beau.plumlee@colliers.com](mailto:beau.plumlee@colliers.com)  
DRE #01269167

AGENT: BOBBY FENA, SIOR  
559 221 1271 | EXT. 106  
FRESNO, CA  
[bobby.fena@colliers.com](mailto:bobby.fena@colliers.com)  
DRE #00590204

COLLIERS INTERNATIONAL  
7485 N. Palm Avenue, #110  
Fresno, CA 93711

[www.colliers.com/fresno](http://www.colliers.com/fresno)

All information, representation and projections shown herein are based on information supplied by sources deemed to be reliable; however, they are not warranted by Colliers International and are subject to change without notice.

